



Harbor Breeze® is a registered trademark of LF, LLC. All Rights Reserved.

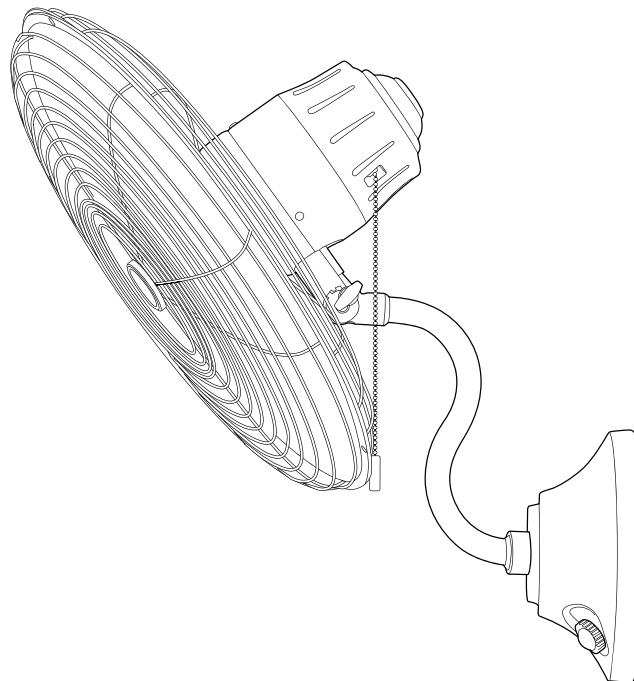
ITEM #0275422
2889554

MARINA COVE II

MODEL #JP18BZ3
JP18TI3

Español p. 14

ATTACH YOUR RECEIPT HERE



**Intertek
For
Damp Location**
4009218

Purchase Date _____



Questions, problems, missing parts? Before returning to your retailer, call our customer service department at **1-888-251-1003**, 8 a.m. - 8 p.m., EST, Monday - Sunday. You could also contact us at partsplus@lowes.com or visit www.lowespartsplus.com.

TABLE OF CONTENTS

Safety Information2

Package Contents4

Hardware Contents5

Preparation5

Assembly Instructions6

Operating Instructions11

Care and Maintenance12

Troubleshooting12

Limited Lifetime Warranty13



SAFETY INFORMATION

READ AND SAVE THESE INSTRUCTIONS

- Do not discard fan carton or foam inserts. Should this fan need to be returned to the factory for repairs, it must be shipped in its original packaging to ensure proper protection against damage that might exceed the initial cause for return.
- Make sure all electrical connections comply with local codes, ordinances, the National Electrical Code and ANSI/NFPA 70-1999. Hire a qualified electrician or consult a do-it-yourself wiring handbook if you are unfamiliar with installing electrical wiring.
- Make sure the installation site you choose allows a minimum clearance of 7 ft. from the blades to the floor.
- After you install the fan, make sure that all connections are secure to prevent the fan from falling.
- The net weight of this fan is: 21 lbs.



SAFETY INFORMATION

⚠ WARNING



To reduce the risk of fire, electrical shock or personal injury, use the metal wall mounting bracket provided with the fan. Secure the wall mounting bracket directly to the building structure on a wood stud or wood post or beam. Do not install directly to drywall.

The wood stud or wood post and its support must be able to support the moving weight of the fan (at least 50 lbs.). The stud or wood beam must be supported directly by the building structure. Do NOT use any other wall mounting bracket other than the one provided.

To avoid personal injury, the use of gloves may be necessary while handling fan parts with sharp edges.

To reduce the risk of fire or electrical shock, do not use the fan with any solid state speed control device or control fan speed with a full range dimmer switch.

To reduce the risk of personal injury or electrical shock, the fan should be installed where it will be out of reach of children. The fan is NOT a toy -- DO NOT play with the fan or allow anyone else to play with the fan.

To reduce the risk of personal injury or electrical shock, do not operate the fan if the cord or plug has been damaged.

To reduce the risk of fire, avoid the use of an extension cord. **If** an extension cord is used, it **must** be UL- or ETL-listed; **NEVER** use more than one extension cord to operate the fan.

To reduce the risk of personal injury, use **only** parts provided with this fan. **The use of parts OTHER than those provided with this fan will void the warranty.**

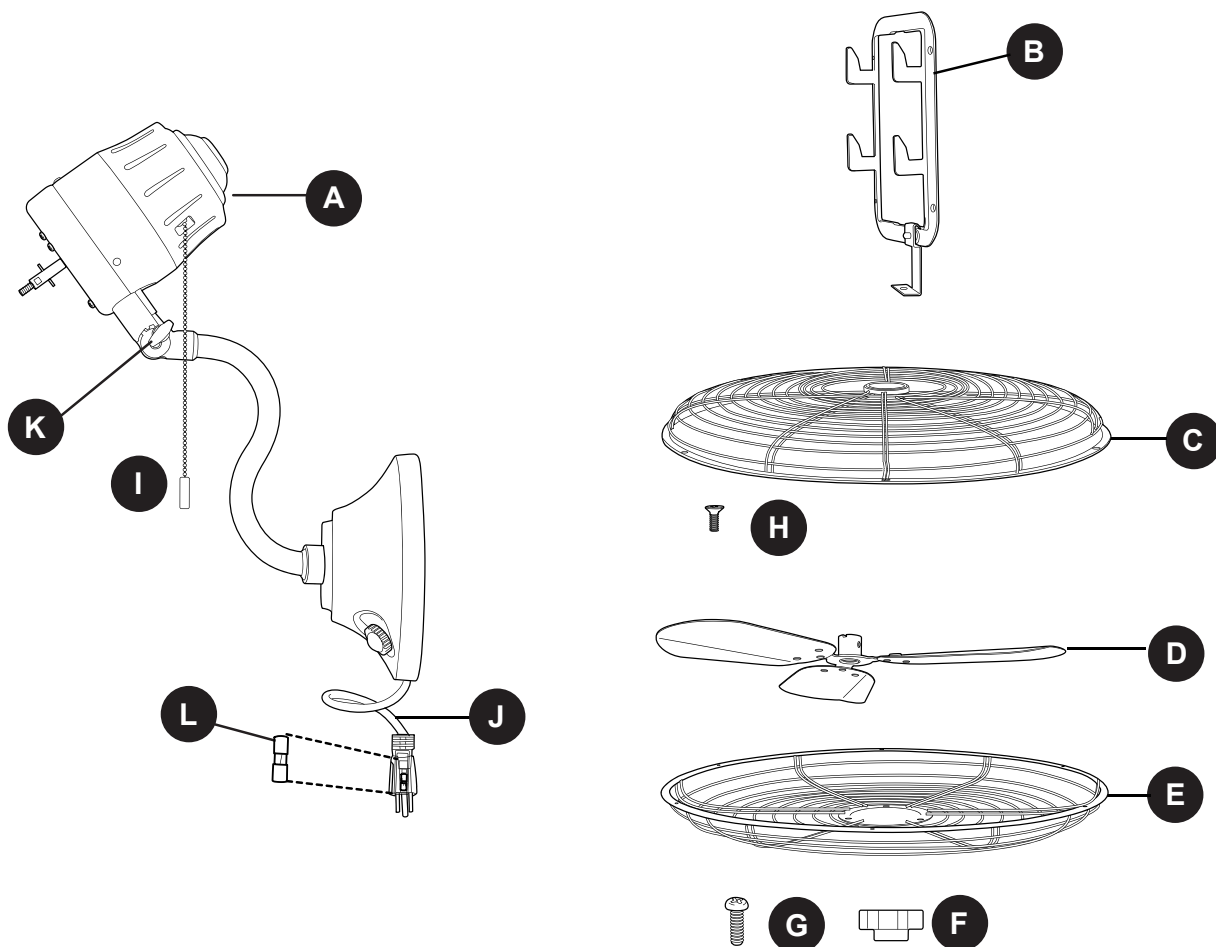
CAUTION

Before proceeding, be sure to shut off electricity at main switch or circuit breaker in order to avoid electrical shock.

Read all instructions and safety information before installing your new fan. Review the accompanying assembly diagrams.

Due to the bulkiness of the fan assembly, it is advisable to seek the help of another person in order to install the fan assembly in the safest, most efficient manner.

PACKAGE CONTENTS



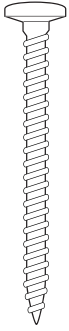
PART	DESCRIPTION	QUANTITY
A	Fan Assembly	1
B	Wall Mounting Bracket	1
C	Front Cage	1
D	Blade Assembly	1
E	Back Cage	1
F	Blade Assembly Nut (preassembled)	1
G	Back Cage Screw (preassembled)	3

PART	DESCRIPTION	QUANTITY
H	Front Cage Screw (preassembled)	6
I	Pull Chain (preassembled)	1
J	Power Cord (preassembled)	1
K	Decorative Nut (preassembled)	1
L	Fuse (Included)	1

! IMPORTANT REMINDER: You must use the parts provided with this fan for proper installation and safety.

HARDWARE CONTENTS (shown actual size)

AA



Wood
Screw

Qty. 4
+ 1 extra

PREPARATION

Before beginning assembly of product, make sure all parts are present. Compare parts with package contents list and hardware contents list. If any part is missing or damaged, do not attempt to assemble the product.

Estimated Assembly Time: 90 minutes

Tools Required for Assembly (not included): Phillips Screwdriver, Drill, Drill Bit, Stud Finder, Flathead Screwdriver, Pliers, Wrench, Safety Glasses, Tape Measure and Stepladder

Helpful Tools (not included): Level, Pencil, Do-It-Yourself and Wiring Handbook

⚠ DANGER: Make sure the wall mounting bracket is securely attached to the building structure and can support the full weight of the fan. Failure to do this can result in serious injury or death.

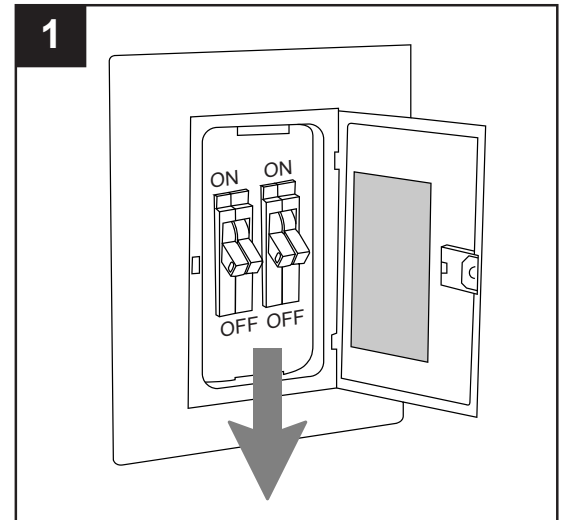
After opening top of carton, remove mounting hardware package from foam inserts. Remove fan assembly from packing and place on carpet or on foam to avoid damage to finish.

⚠ CAUTION: Carefully check all screws, bolts and nuts on fan assembly to ensure that they are secured.

ASSEMBLY INSTRUCTIONS

1. Turn off circuit breakers and wall switch to the fan supply line leads.

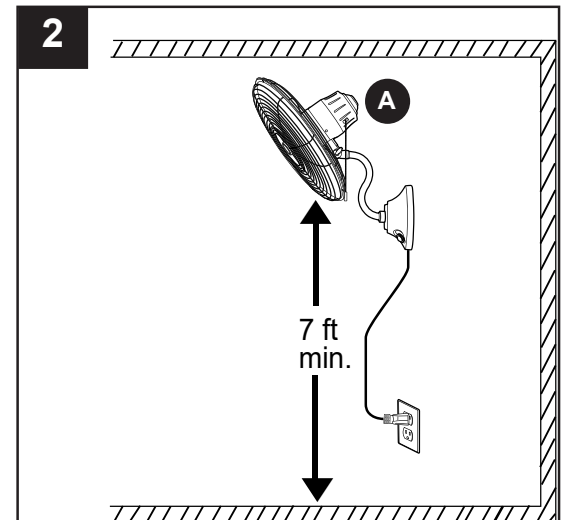
⚠ DANGER: Failure to disconnect power supply prior to installation may result in serious injury or death.



2. This fan assembly (A) can only be mounted on an indoor wall or on an enclosed porch or enclosed patio wall.

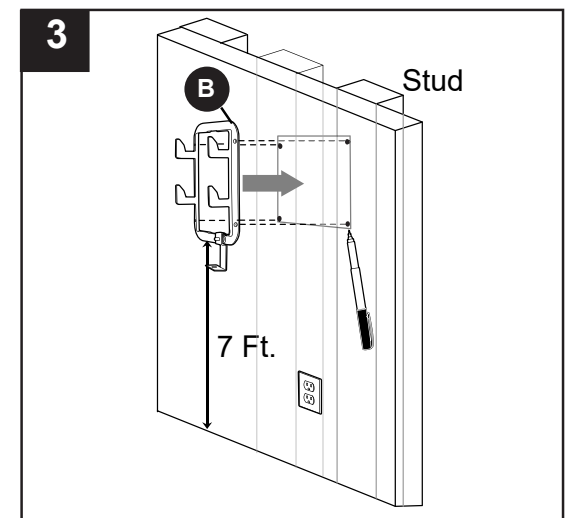
To prevent personal injury and damage, ensure that the hanging location allows the fan assembly (A) a clearance of 7 ft. from the floor to prevent accidental contact with the blade.

⚠ CAUTION: If you are going to attach the fan assembly (A) to a wood stud or wood post, the stud or wood post must be wide enough and thick enough to sustain the wall mounting bracket (B) and the weight of the fan assembly (A).



3. Determine the approximate position of where you want the fan to be located on the wall. Then, locate the stud in the wall. Position wall mounting bracket (B) on wood stud or wood post and mark the location of the four holes using a pencil or a marker (not included).

⚠ WARNING: To reduce the risk of fire, electrical shock or personal injury, use all four mounting holes (two at the top and two at the bottom) in wall mounting bracket (B) when installing wall mounting bracket (B).



ASSEMBLY INSTRUCTIONS

4. Use 3/32-in. drill bit (not included) to drill pilot holes at marked locations. Then, install wall mounting bracket (B) to mounting surface with wood screws (AA).

⚠ WARNING: It is very important that you use the proper hardware when installing the wall mounting bracket (B) as this will support the fan assembly (A).

Hardware Used

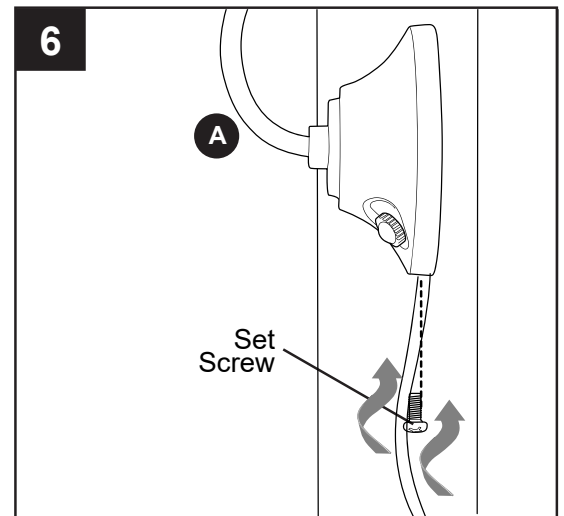
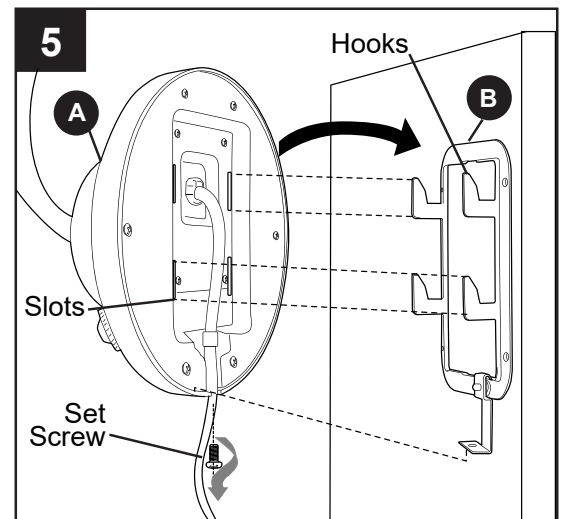
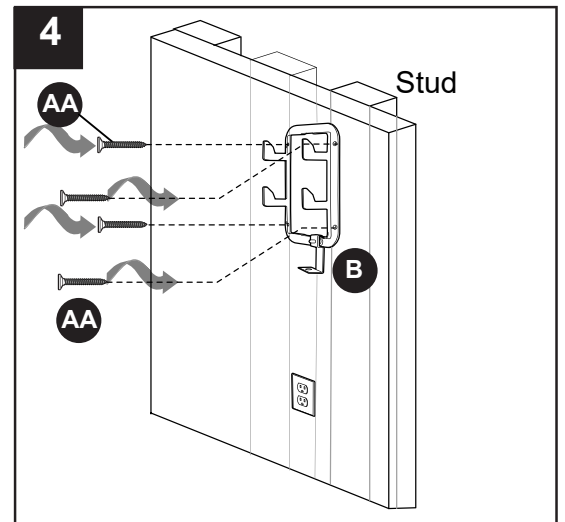
AA Wood Screw  x 4

5. Remove set screw at bottom of fan assembly (A). With the wall mounting bracket (B) secured to the wall and able to support the fan assembly (A), you are now ready to hang the fan assembly (A).

Grab the fan assembly (A) firmly with two hands. Align the four slots in the middle of the back of the fan assembly (A) with the four hooks on the wall mounting bracket (B) and then pull down firmly on fan assembly (A).

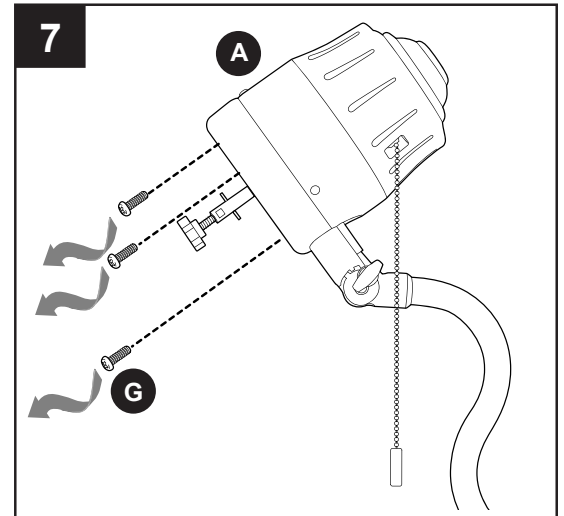
⚠ WARNING: Failure to make sure all four hooks on the wall mounting bracket (B) have engaged completely with the four slots in the fan assembly (A), and that the fan assembly (A) is stable may result in injury or death.

6. Replace set screw at bottom of fan assembly (A). Tighten securely.

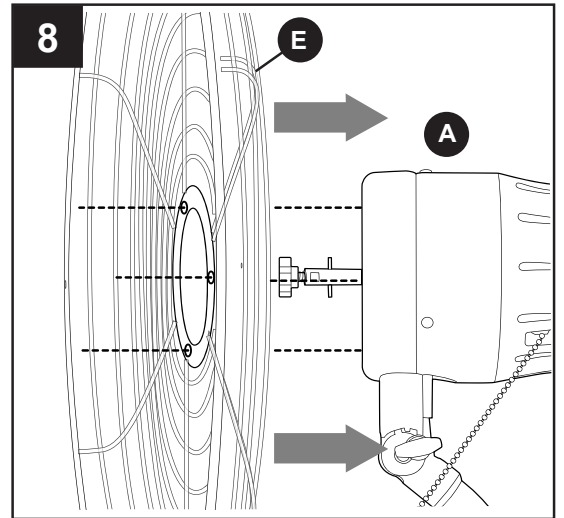


ASSEMBLY INSTRUCTIONS

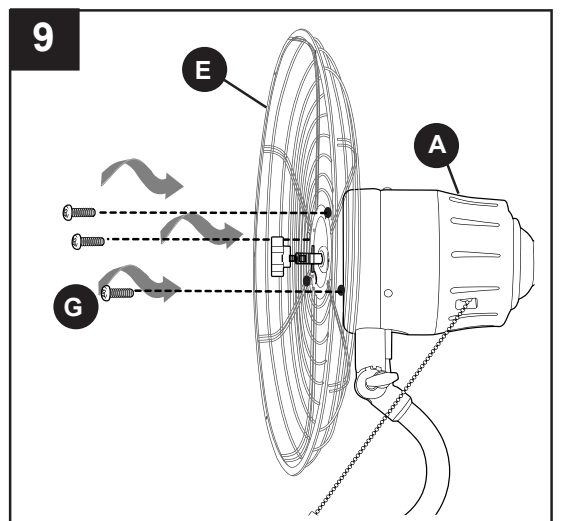
7. Remove the three back cage screws (G) from the outer edge of the motor on fan assembly (A)



8. Align the three holes on the outer edge of the motor on fan assembly (A) with the three holes in the center of the back cage (E).

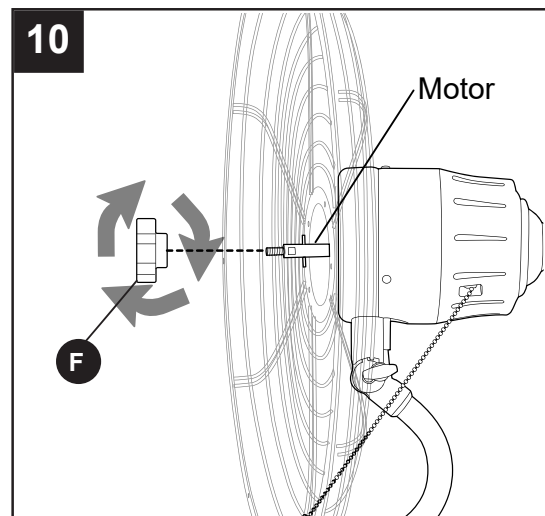


9. Install the three back cage screws (G) previously removed into each of the three holes in the center of the back cage (E) to secure back cage (E) to motor on fan assembly (A).

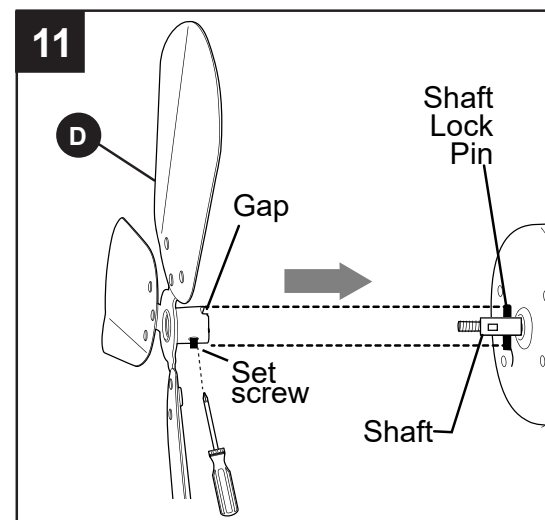


ASSEMBLY INSTRUCTIONS

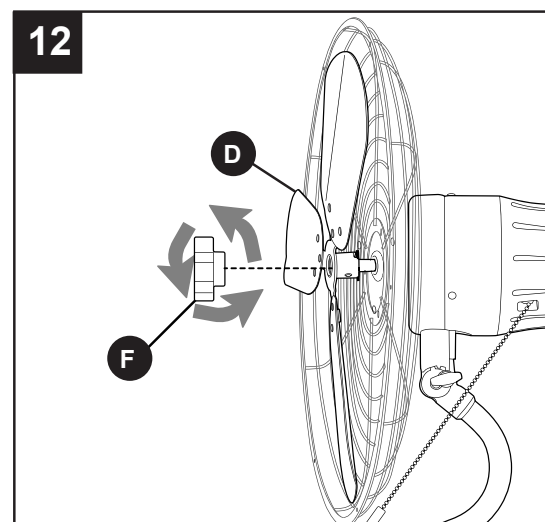
10. Turn blade assembly nut (F) clockwise to remove from shaft on fan motor.



11. Partially loosen preassembled set screw on blade assembly (D). Place blade assembly (D) over motor shaft and lock pin, making sure to align gap on the blade assembly (D) with lock pin on motor. Turn set screw located on the blade assembly (D) clockwise to secure blade assembly (D) to fan motor.



12. Re-attach blade assembly nut (F) into center of blade assembly (D) and turn counterclockwise to secure.

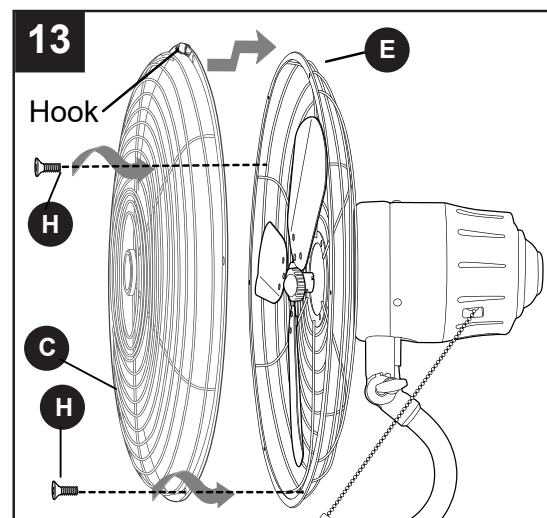


ASSEMBLY INSTRUCTIONS

13. Remove all six front cage screws (H) from edge of back cage (E).

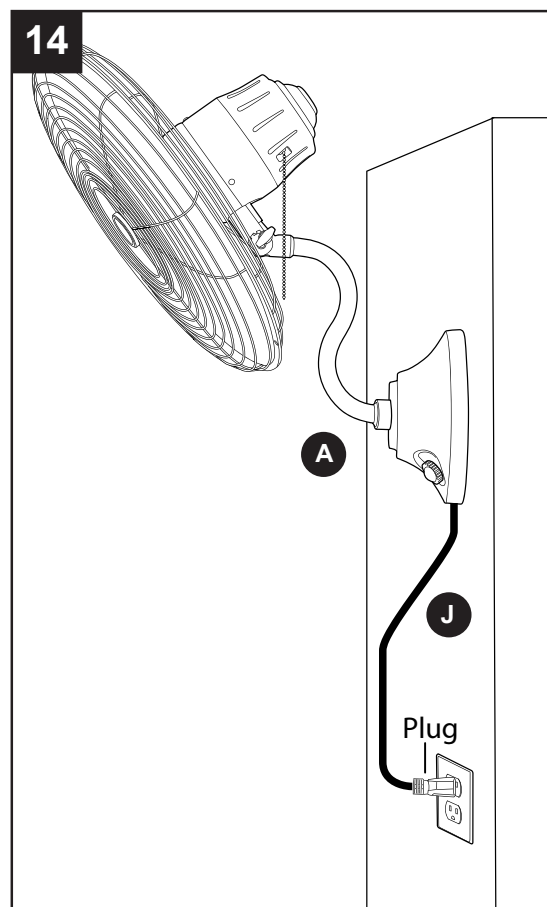
Place hook at top of front cage (C) over edge at top of back cage (E). **NOTE:** Make sure hook engages and all front and back cage holes match up; this will allow the front cage (C) and the back cage (E) to hang together while you re-insert the front cage screws (H) into the the front and back cage holes.

Insert front cage screws (H) into both holes at top of front cage (C), then tighten. Insert remaining front cage screws (H). Tighten front cage screws (H), alternating from one side of front cage (C) to the other until all front cage screws (H) are completely secured.



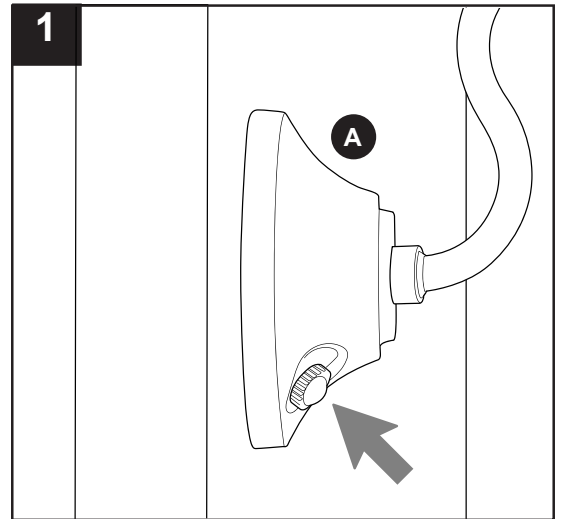
14. Insert power cord (J) preassembled on fan assembly (A) into proper wall outlet.

⚠ WARNING: The power cord is equipped with a three-prong grounded plug that must be inserted into a matching receptacle. Under no circumstances must the grounding prong be cut off the plug. Where a two-prong wall receptacle is encountered, it must be replaced with a properly grounded **three-prong** receptacle installed in accordance with the National Electrical Code and all applicable local codes and ordinances. This work must be done only by a qualified electrician, using copper wire only.



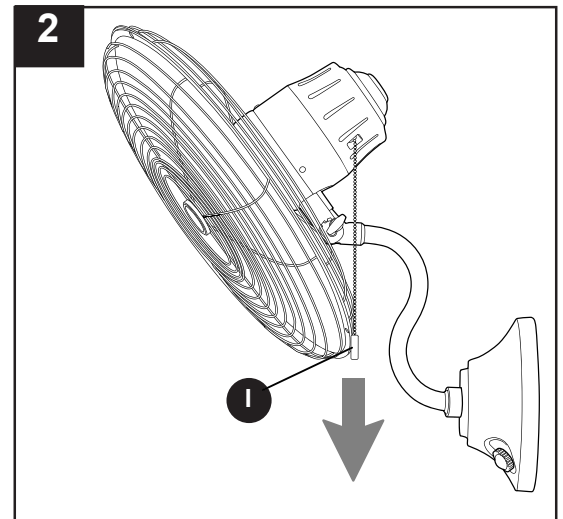
OPERATING INSTRUCTIONS

1. It is recommended you test the fan before finalizing installation. Restore power from circuit box. Test fan speeds with preassembled wall control. Start at the **Off** position (no blade movement). One turn of the dial will set the fan to HIGH (**H**). Two turns will set the fan to MEDIUM (**M**). Three turns will set the fan to LOW (**L**).



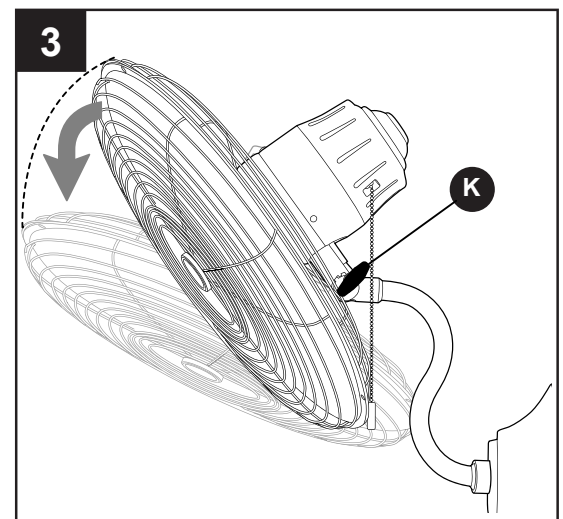
2. Test the oscillation function with the preassembled pull chain (I). Pull the chain (I) to start and stop.

If fan does not function properly, please refer to “Troubleshooting” section.



3. Use decorative nut (K) to adjust fan to the desired position. The fan can be angled up or down.

CAUTION: To avoid personal injury or damage to the fan, the fan **MUST BE TURNED OFF** before adjusting.



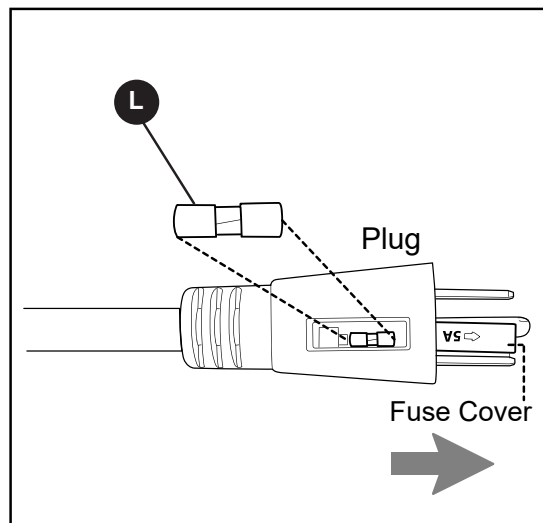
CARE AND MAINTENANCE

At least twice each year tighten all screws on fan assembly and front cage. Clean fan assembly with only a soft brush or lint-free cloth to avoid scratching the finish.

IMPORTANT: Shut off main power supply before beginning any maintenance.

The three-prong plug is installed with a fuse (L) that is a vital safety device. A filament inside the fuse (L) is designed to melt and cut the circuit if the current gets too high. This prevents damage to your fan and the person using it and stops the power cord from overheating to the point where it could catch fire.

If you should need to replace the fuse (L), unplug fan. Locate the fuse cover at end of the plug on the power cord. Slide fuse cover open to expose fuse. Using needle-nose pliers (not included), remove fuse. Inspect fuse -- the small, glass tube with metal on each end -- to determine whether it will need to be replaced. [If the fuse (L) is blown, it will look dark and smudged or the visible wire inside will be broken.] Use a replacement fuse with a rating of 5 amps, 125 volts only, and insert fuse in between the metal brackets inside the fuse housing. Slide fuse cover shut.



TROUBLESHOOTING

⚠ WARNING: Before beginning work, shut off the power supply to avoid electrical shock.

PROBLEM	POSSIBLE CAUSE	CORRECTIVE ACTION
Fan does not move.	Power is off or fuse is blown.	Turn power on or check fuse.
Noisy operation.	Fan is new.	Allow fan a "break in" period of a few days, especially when running the fan at Medium and High speeds.
Excessive wobbling.	1. Fan not securely mounted. 2. Set screw on blade assembly is not tightened properly.	1. Turn power off. Verify wall mounting bracket is secure. 2. Remove front cage screws and tighten blade assembly set screw securely.

LIMITED LIFETIME WARRANTY

The distributor warrants this fan to be free from defects in workmanship and materials present at time of shipment from the factory for Lifetime limited from the date of purchase. This warranty applies only to the original purchaser. The distributor agrees to correct any defect at no charge or, at our option, replace the ceiling fan with a comparable or superior model.

To obtain warranty service, present a copy of your sales receipt as proof of purchase. All cost of removal and reinstallation are the express responsibility of the purchaser. Any damage to the ceiling fan by accident, misuse or improper installation, or by using parts not produced by the manufacturer of this fan or affixing accessories not produced by the manufacturer of this fan, are the purchaser's own responsibility. The distributor assumes no responsibility whatsoever for fan installation during the limited lifetime warranty. Any service performed by an unauthorized person will render the warranty invalid.

Due to varying climatic conditions, this warranty does not cover changes in brass finish, rusting, pitting, tarnishing, corroding or peeling. Brass finish fans maintain their beauty when protected from varying weather conditions. Any glass provided with this fan is not covered by the warranty.

Any replacement of defective parts for the ceiling fan must be reported within the first year from the date of purchase. For the balance of the warranty, call our customer service department (at **1-888-251-1003**) for return authorization and shipping instructions so that we may repair or replace the ceiling fan. Any fan or parts returned improperly packaged is/are the sole responsibility of the purchaser. There is no further express warranty. The distributor disclaims any and all implied warranties. The duration of any implied warranty which cannot be disclaimed is limited to the limited lifetime period as specified in our warranty. The distributor shall not be liable for incidental, consequential or special damages arising at or in connection with product use or performance except as may otherwise be accorded by law. This warranty gives you specific legal rights and you may also have other rights which vary from state to state. This warranty supersedes all prior warranties.