

THERMOSTATIC SHOWER Series INSTALLATION GUIDE

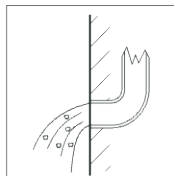
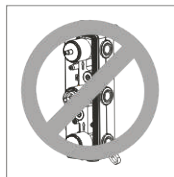


Model: 6001

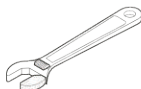
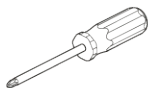
Model: 6371

♦ Installation Condition

1. Check the Accessories List to verify that all parts are complete in this package.
2. Do not disassemble the main body by yourself.
3. Connect inlet pipes to supply valves.
4. Make sure inlet pipes and supply valves have been installed and cleaned, with no impurities in the pipeline.
5. After installation, check all joints for leakages.
6. Do not leave the rain shower system exposed to a severely corrosive environment.



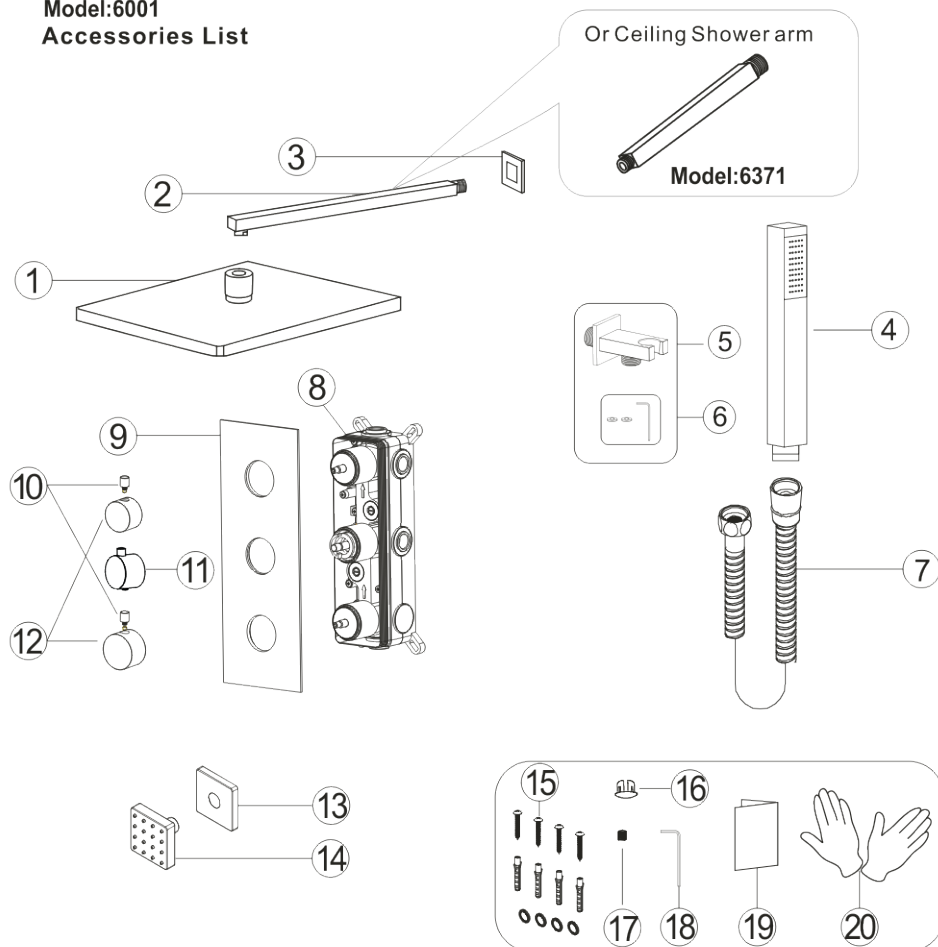
YOU MAY NEED:



◆ 3 Functions Thermostatic Shower Faucet Set

Model:6001

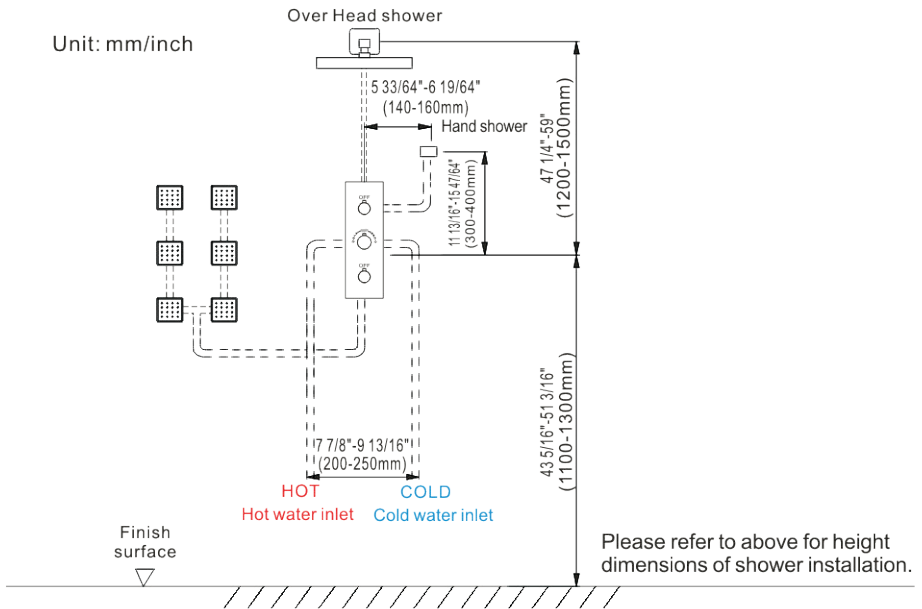
Accessories List



No.	Part name	Qty	No.	Part name	Qty
1	Shower head	1	11	Handle	1
2	Shower arm	1	12	Water diverter	2
3	Shower arm cover	1	13	Body jet cover	6
4	Hand shower	1	14	Body jet	6
5	Hand shower holder	1	15	Main body spare parts	4
6	Holder parts	1	16	Handle cap	1
7	Shower hose	1	17	Screw	3
8	Main body	1	18	Wrench	1
9	Panel	1	19	Instruction manual	1
10	Water diverter rod	2	20	Gloves	2

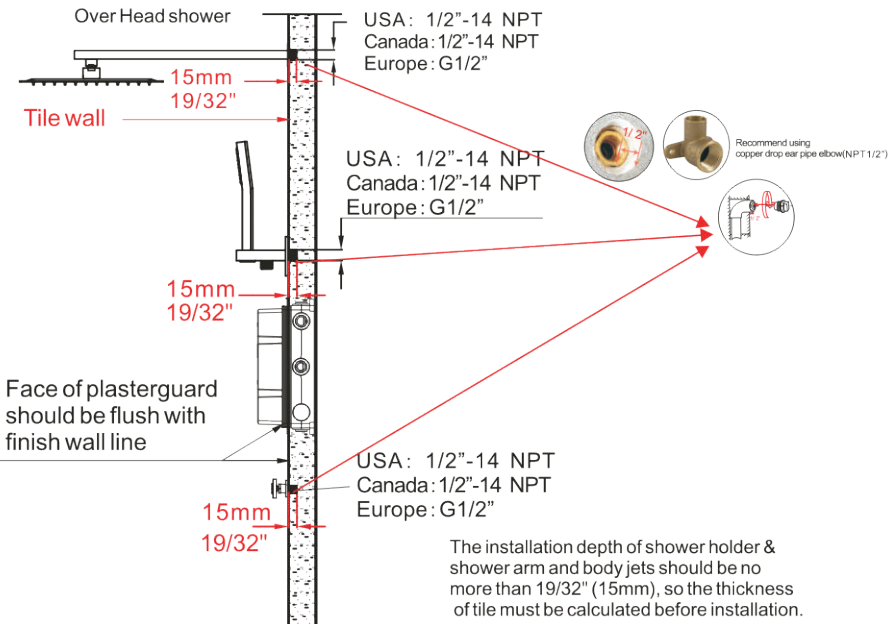
WARNING: Choking hazard. Please keep all small parts and plastic bags out of the reach of children.

◆ Essential Dimensions & Water Pipe Line



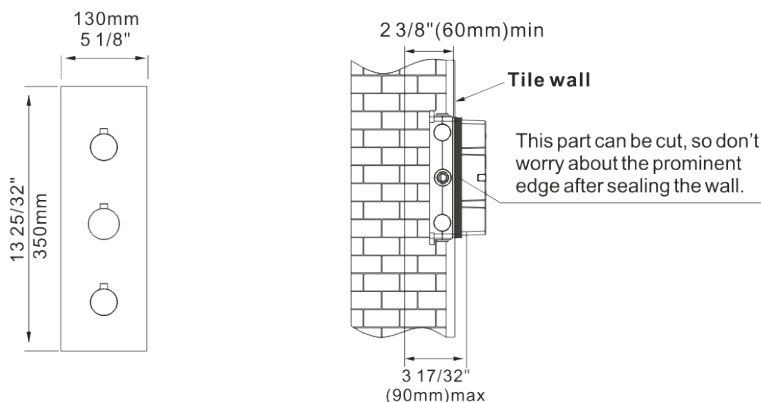
◆ Installation Depth of Shower Holder & Body Jets & Shower Arm

Unit: mm/inch



◆ Installation Depth of Main Body

Unit: mm/inch



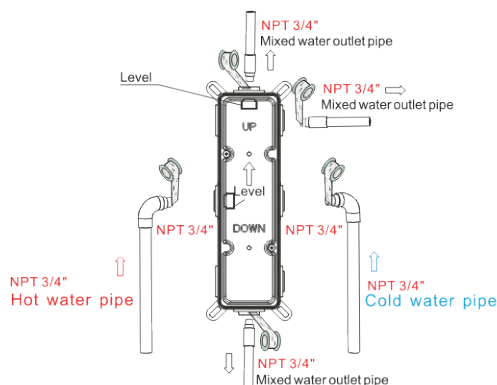
Notice: 1. The installation depth of main body should be no less than 2 3/8" (60mm) and no more than 3 17/32" (90mm), including the thickness of tile. Otherwise, the panel cannot be installed.
2. The opening size of ceramic tile shall be smaller than the panel size.

◆ Main Body Connecting Pipe Schematic Diagram



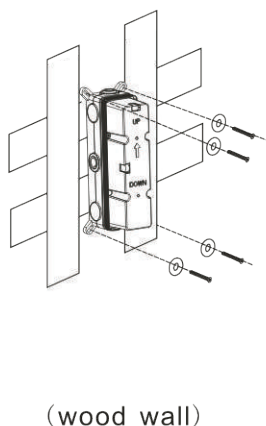
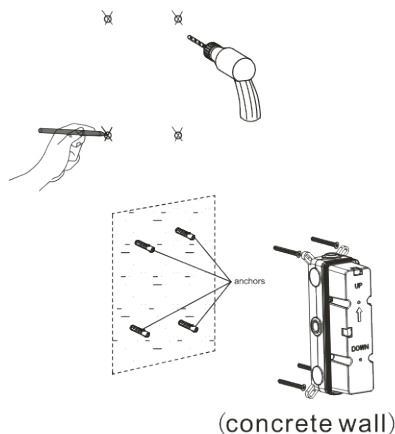
Warning: must install hot water and cold water inlet strictly as instructions.

Wrap enough teflon tape



1. As shown in the figure, the inlet and outlet pipes are pre-buried, pay attention to the correct direction of installing the pre-buried main body, and make sure that the mark level on the top of the installation box is facing upward.
2. Install the hot and cold water inlet pipes and connect the three mixed water outlet pipes to shower head, hand shower and body jet separately.
3. Before tiling, turn on the water to test whether all the pipes are tightly connected without leakage.

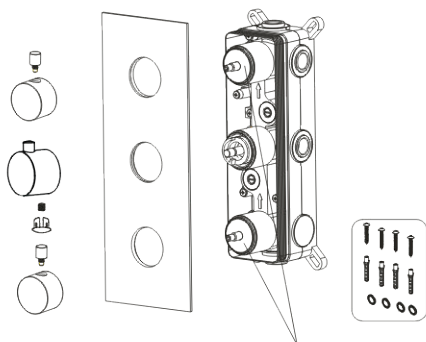
◆ Main Body valve installation



1. Make marks according to the size of the main body valve and then drill anchors into the wall (concrete wall)
2. Lock main body to wall directly with screws (wood wall)

▲ Please note that the level meter should be parallel with the wall, otherwise the panel cannot be installed.

◆ Main Body Valve Installation



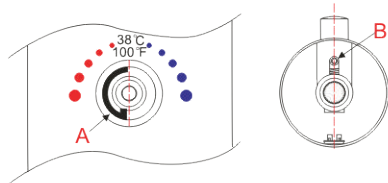
Do not remove the white wear ring otherwise the handwheel will be damaged

Precautions for handwheel installation

※1: The line can't misplace, it should be kept in a line, otherwise the water temperature of 100 °F or 38°C will not be correct.

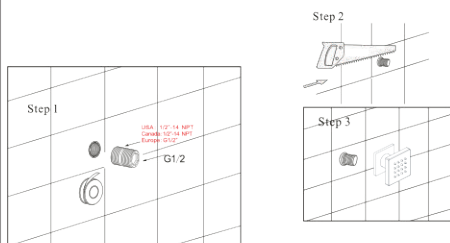


※2: Please ensure that A Plastic locating ring and B handwheel locating pin kept in the same line with 100 °F or 38 °C. Otherwise, the water temperature will be wrong.



Use valve gasket spare parts to fix main body onto the wall and then install panel, two water diverters and handle with the screw and cap step by step.

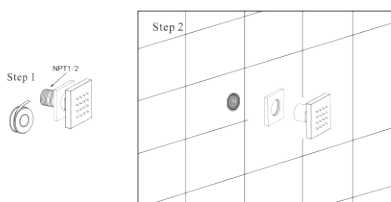
◆ Body Jets Installation



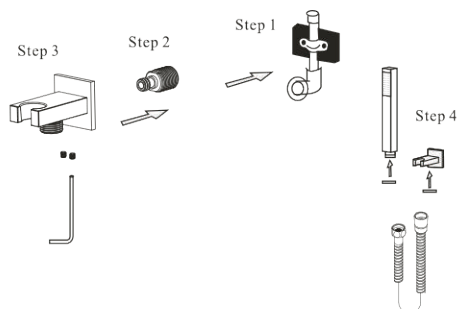
Step 1. Wrap the threaded pipe of NPT1/2 with Teflon tape and screw it into the wall.

Step 2. Cut off excess part with a saw.

Step 3. Screw the massage body jet onto the wall



◆ Hand Shower Holder Installation



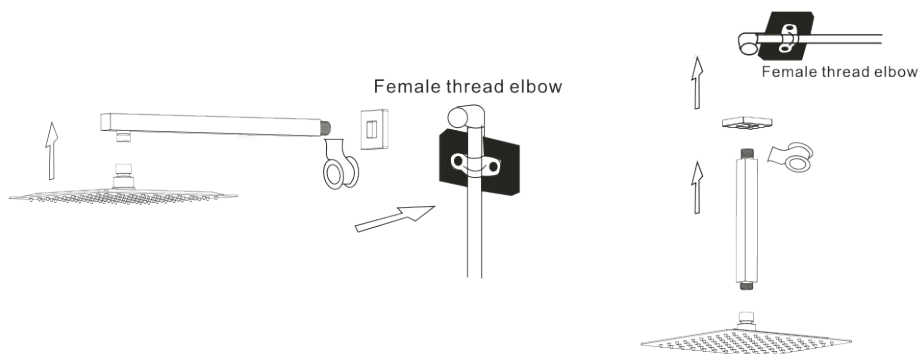
Step 1. Screw the thread into the water pipe inside the wall.

Step 2. Screw the main body into the thread..

Step 3. Rotate and fix the body with the special-shaped wrench.

Step 4. Connect hand shower and the hose.

◆ Installation Of Rain Shower Head& Shower Arm



1. Connect shower arm with the cover before screwing arm into riser connection to prevent damage.

2. Fix shower head onto shower arm and apply tape to pipe threads on both ends.

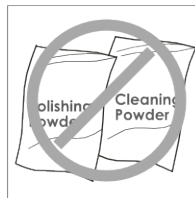
3. Do not overtighten shower head. It is 360° swivel connection.

◆ Clean and Maintenance

Do's

1. In order to keep the mixer surface bright, please clean the mixer regularly.
2. Rinse faucet with clean water and wipe it with soft cotton cloth.
3. Use one of the following cleaners to remove dirt on the surface:

- a. Mild liquid cleaner.
- b. Colorless glass cleaner and powder cleaner which does not cause abrasion and can be dissolved completely.
- c. Polish liquid which does not cause abrasion.



Don'ts

- a. Avoid using cleaning powder, harsh cleaning chemicals, brushes and coarse cloth to prevent scratching and friction.
- b. Do not use acid cleaner to clean the faucet as it may cause surface corrosion of the faucet. If the faucet should be exposed to harmful acid substances, please rinse it with water immediately.

Website: www.casainc.com
Contact Phone Number: 888-257-3857
Service Contact: service@casainc.com