

# LED MIRROR

LED MIRROR



UK: MANUFACTURER SPECIALIZED IN: LED wall mounted vanity mirror, LED full length mirror, LED mirror cabinet.

DE: HERSTELLER SPEZIALISIERT IN: LED-Wandspiegel, LED-Spiegel in voller Länge, LED-Spiegelschrank.

FR: FABRICANT SPÉCIALISÉ DANS : Miroir de courtoisie mural à LED, miroir pleine longueur à LED, armoire de toilette à LED.

ES: ABRICANTE ESPECIALIZADO EN: Espejo de pared LED, Espejo de cuerpo entero LED, Armario con espejo LED.

IT: PRODUTTORE SPECIALIZZATO IN: LED specchio di vanità montato a parete, LED specchio a tutta lunghezza, LED armadio a specchio.

## Technical information



\* Both vertical&horizontal installation are valid.

Size: 100x70cm

Input: 220V

Power: 65W

Ra: >80

LED: SMD2835/378PCS

Lumen:1100LM

CCT: 6500K/3000K/4000K

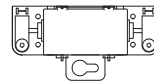
## Kits coming with the mirror



Expansion Tube  
3+1



Screw  
3+1



Junction Box  
1

## Tools needed for installation



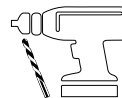
Pencil



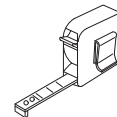
Screw Driver



Rubber Mallet

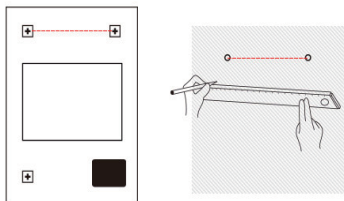


Electric Drill

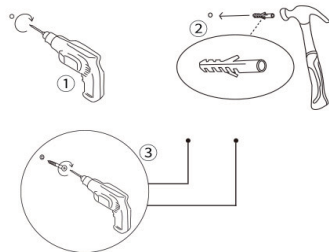


Tape Measure

## Installation steps

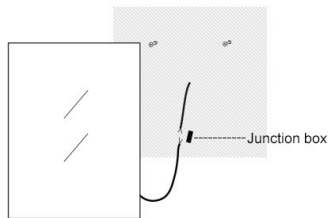


Measure the distance between the two brackets on the back of the mirror and use a level to mark the same distance on the wall.

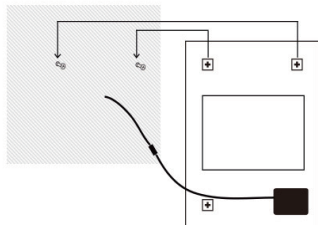


Use a hammer to drive the plastic anchors into the hole drilled with an electric drill, then use the electric drill to screw the screws into the plastic anchors.

1 2  
3 4



Connect the wall power cord to the wires behind the mirror through the junction box.



Align brackets behind the mirror with the screws on the wall and hang it, installation is completed.

## Instructions for use

The mirror is equipped with 3 touch sensor switch, when installation finished and power connected, the touch sensor light will be on, it can be turned off by long press when the mirror light is off.

### For LED Light



First touch sensor is for the LED light, one click for light on/off, quick clicks on-off-on for color temperature changing, long press for dimming.

### For Demister Pad



Second touch sensor is for the demister pad, before having a shower we can turn it on, when we finish the shower, the demister pad area would be clear without any fog. Turn it off before leaving.

### For Bluetooth Speaker



Third touch sensor is for the bluetooth speaker, when the power connected, it will have a reminder voice means that it is ready for connecting. Open bluetooth function from the mobile phone, we can find a signal called mirror multimedia. Click and connect then we can play music from the phone and the music will come from the speakers backside of the mirror. Turn it off when it is free, avoid the neighbour connect it by accident.

#### **i** Kind reminder

Bluetooth is connectable to one device only. If you want to connect the second device, please forget the first device.

#### **i** Warning

1. Disconnect from outlet before putting on or taking off parts.
2. Close supervision is necessary when this mirror is used by, or near children.
3. Keep the cord away from heated surfaces.
4. Make sure that the electricity is turned off at the power source before proceeding with the installation.
5. Always unplug all the power supply cords from before moving the product, testing the product, or repairing the product.
6. Do not use outdoors.