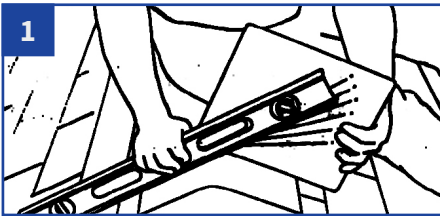




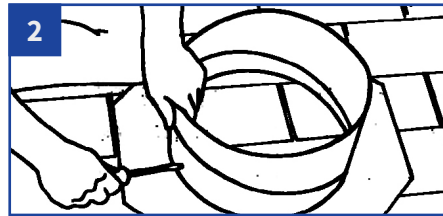
The metal (galvanized and aluminum) vents contain sheet metal components that may contain sharp edges. Work gloves with an ANSI A5 or EN 388:2016E cut resistance rating or greater must be worn when handling/installing this product.

TOOLS NEEDED

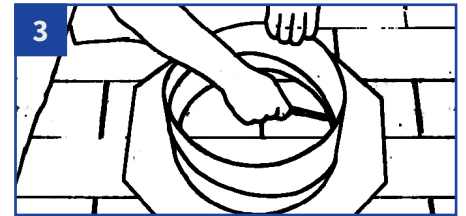
- Caulk
- Phillips screwdriver
- Carpenter's level
- Putty knife
- Keyhole or sabre saw
- Utility knife
- Hammer and/or Nail Gun
- Drill
- Ruler
- 12 galvanized roofing nails



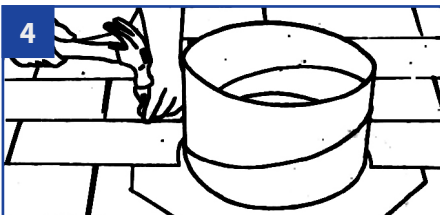
To determine roof pitch, stand pitch gauge on peak of roof or use the Air Vent app. Place straight edge on opposite side of roof. Read roof pitch from printed gauge parallel to bottom of straight edge.



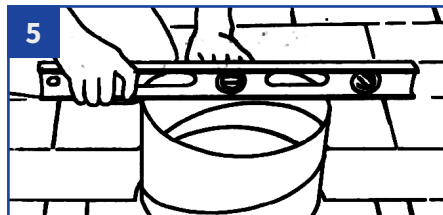
Turn bottom of collar clockwise to match roof pitch number with indicator line on flashing. Place 3 (#10 x 1") sheet metal screws through holes that align with predrilled base holes.



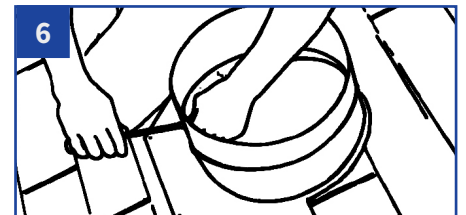
Choose location of turbine using the placement guide on the back page. Center between two rafters and mark hole to be cut. Cut hole as marked.



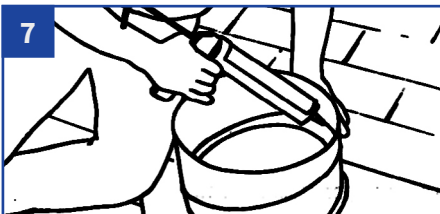
Slide top half of flashing under shingles all the way to the collar. Apply 1/2" bead of caulk between the roof deck and the bottom face of the vent flange. Secure with 12 galvanized roof ring shank nails evenly spaced, that fully penetrate the deck.



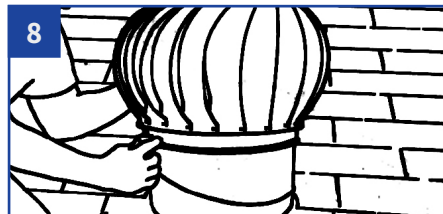
Turn top of collar counter clockwise to a level position.



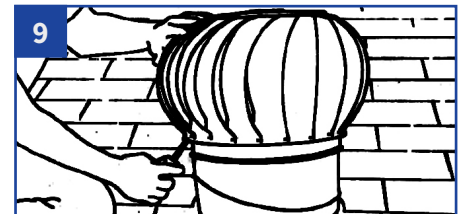
Place locking clamp across seam and tighten with the included color-coded machine screw.



Using caulk, fasten down any loose shingles. Using caulk on the inside of the turbine, seal all seams including the adjusting seam on collar, turbine base and the locking clamp. Seal all exposed nail heads with caulk.



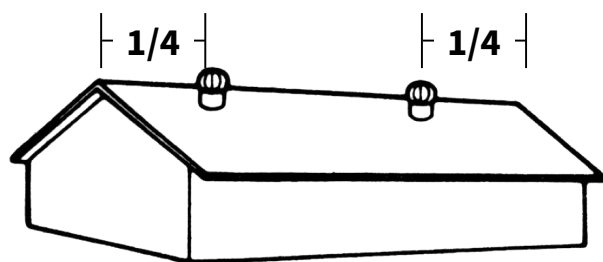
Position turbine onto the collar, locating the vertical legs into the collar slots. Install 3 (#10 x 1") sheet metal screws through the vertical legs and into the extruded holes in the collar. Tighten the screws firmly, but do not over-tighten to the point that the screw strips out.



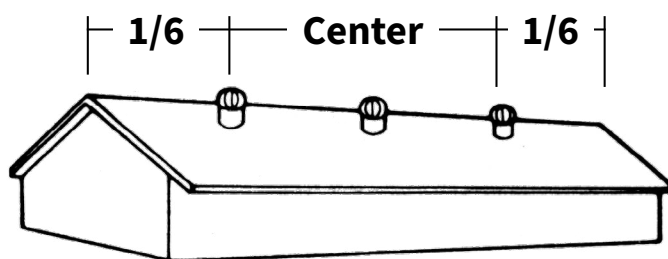
After completing installation, check to make sure the turbine turns freely. The turbine may have shifted in transportation. If necessary, gently pry lowest point of turbine upward to remove any wobble.

If you need assistance in understanding these instructions or have questions or comments, please call 800-AIR-VENT (247-8368). This is a toll-free call.

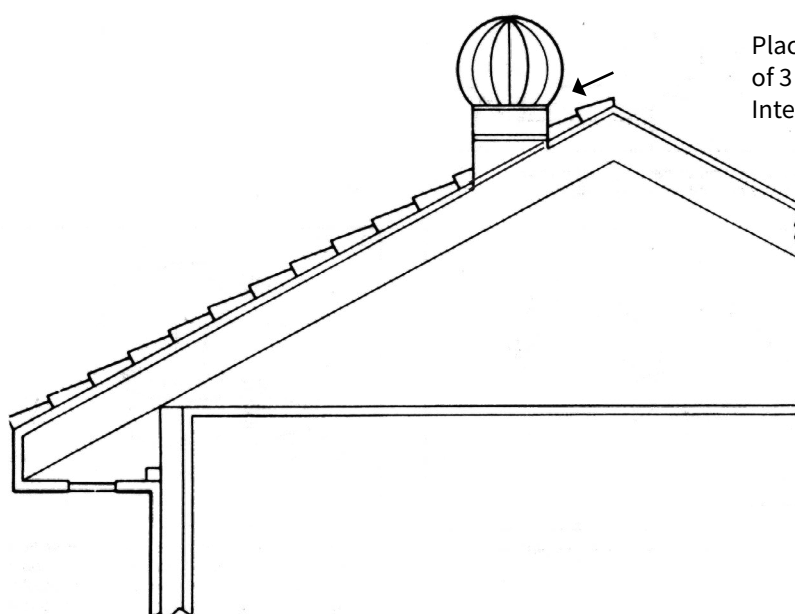
CHOOSING THE LOCATION OF THE TURBINE VENTILATOR



PLACEMENT GUIDE FOR TWO TURBINES



PLACEMENT GUIDE FOR THREE TURBINES



END VIEW OF HOUSE

LIMITED LIFETIME WARRANTY

Air Vent Inc. warrants to the original consumer purchaser of this vent product for the life of the shingles on which it is originally installed that it is sold free of latent defects in materials, parts and workmanship. This warrant is limited to repair or replacement of the defective vent product. All defective products must be returned freight prepaid to Air Vent's factory. If the unit is defective, it will be repaired or replaced, at Air Vent's option, with a new unit free of charge and returned freight prepaid. This warranty does not include repair or replacement due to defects caused by abuse, misuse, fire, substandard or nonconforming installation or destructive weather conditions. This warranty does not cover the labor or any other cost of removal, reinstallation or replacement of, or as a consequence of, the defective vent product. This warranty does not cover field expenses or the cost of any items other than the defective vent product. Consequential damages to property are excluded. Some states do not allow the exclusion or limitation of incidental consequential damages, so the above limitation or exclusion may not apply to you. This warranty gives you specific legal rights, and you may have other legal rights which vary from state to state.

PROOF OF PURCHASE IS REQUIRED WHEN REQUESTING WARRANTY SERVICE. THE ORIGINAL PURCHASER MUST PRESENT A SALES RECEIPT OR OTHER DOCUMENT THAT ESTABLISHES PROOF OF PURCHASE.