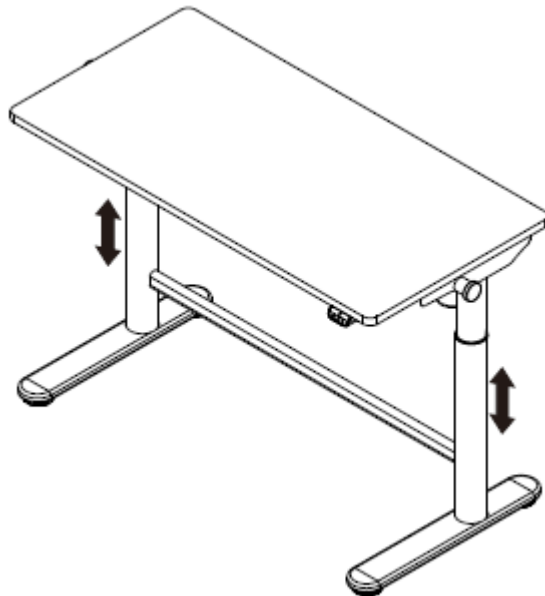




Assembly & Care Guide

For Adjustable Desk

MODEL: 9810710



Adjustable Desk Assembly Instructions

The model number of your desk is printed on the side of your carton.

Always use this number to identify your desk.

Thank you for your purchase of this quality office furniture. With proper use and care, your desk will provide you with years of use. Please follow the instructions on how to assemble and disassemble your desk. If you should have any problems with your desk DO NOT return it to the place of purchase. Please refer to the trouble shooting section of this manual or call our toll free number: **888-840-4557** and a customer service representative will assist you.

Your Packages Includes:

1 Desktop, 1 Frame, 2 Feet, Accessories & Hardware

Please read all instructions completely before assembling your desk.

Technical Specifications:

Column Number	2
Maximum Load	40KG(including 10KG for schoolbag hooks)
Max Speed	15mm/s
Input Voltage	100-240V
Lowest Position	550mm
Highest Position	890mm
Desktop Size	length1000mm width500mm
Duty Cycle	Continuous operation for 2 mins at most after pause for 18 mins
Applicable Temperature	0~40℃
Function Description	Schoolbag hook can hang schoolbags or heavy objects weighing less than 10KG

Table of Contents

Safety Information
Parts List and Breakdowns
Installing the Feet
Installing the Support Plates
Installing the Desktop, Handle, and Adapter Bracket
Installing the Protective Cover and Lids
Installing the Cables to the Adaptor
Trouble Shooting
Warranty



WARNINGS:

- Keep children away from motorized height adjustable desks, control units, and handsets to avoid risk of injury and electric shock.
- Recommended for children 7 years and older.
- Do not allow children to use desk unsupervised.
- Use caution when raising and lower desk to avoid hand pinching.
- Children's seating located under a window can be used as a step by the child and cause the child to fall out of the window.
- Do not place the desk close to another product which could present a danger of suffocation or strangulation, e.g. strings, blinds/curtain cords, etc.
- Do not sit or stand on the desk frame.
- Do not crawl or lie under the desk frame.
- Danger! – this is an electrical appliance – do not adjust the desk height frequently for fun.

Safety Information

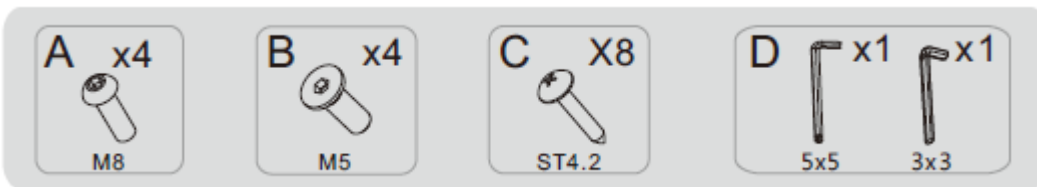
- Power Supply: AC100V-240V, 50/60HZ.
- Check carefully to ensure correct and complete assembly before using.
- Place on a flat surface for final placement.
- Be familiar with all functions and program settings before first use.
- Applicable temperature 0-104°F.
- Unplug the power supply before cleaning.
- Dust the surface with a dry cloth.
- Slight noise caused by the V-ribbed belt or brake system due to structure will not have any effect on the use of the equipment.
- Keep all electrical components away from liquids.
- Do not place any objects taller than 20" underneath the desk.
- Do not open any of the components; legs, control box, or switch box, to avoid the risk of injury or electric shock.
- In the event of a power outage or if the power cord is unplugged, a manual reset may be necessary. See reset procedure in troubleshooting section.
- This motorized adjustable desk has electric motors and is designed for use in dry areas only.
- The desk height is adjustable so that it can be positioned at the most ergonomically suitable height.
- Any other use is at user's risk.

Parts List

Tools Required:

Allen Key Wrench (Included)

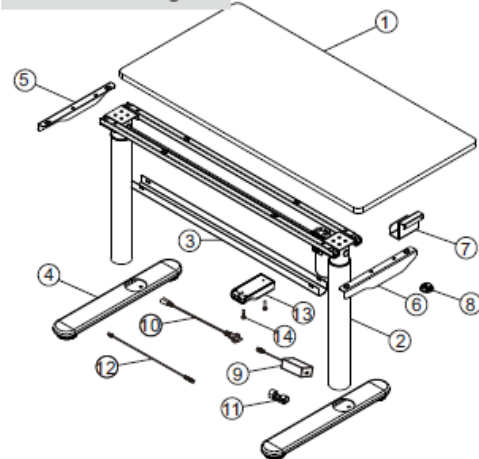
Parts List:



Component list

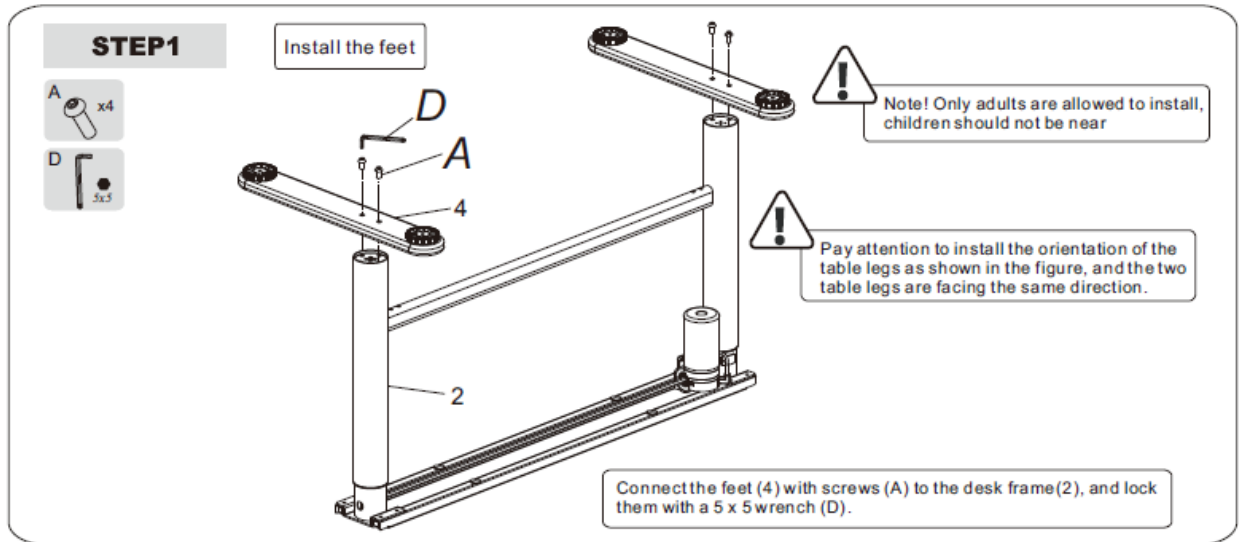
No.	Part	Qty	No.	Part	Qty	No.	Part	Qty
①	Desktop	1	②	Desk frame	1	③	Protective cover	1
④	Feet	2	⑤	Left support plate	1	⑥	Right support plate	1
⑦	Dominator bracket	1	⑧	Lids	4	⑨	Adapter	1
⑩	Power cable	1	⑪	Cable clip	4	⑫	Adapter cable	1
⑬	Hand-switch	1	⑭	ST4.2	2			

Installation diagram

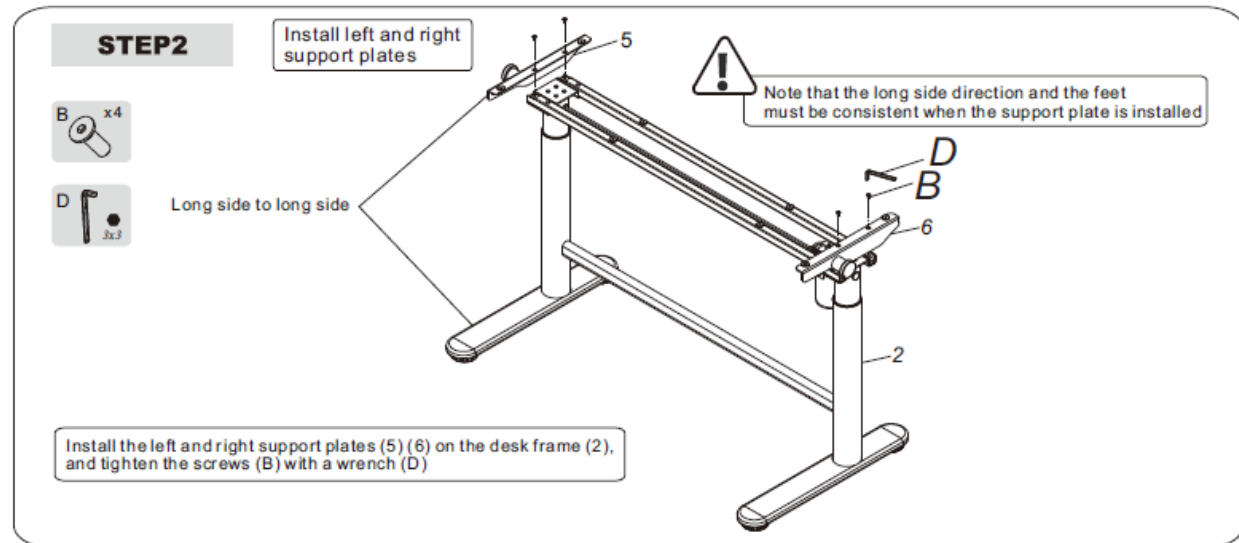


Assembly Instructions

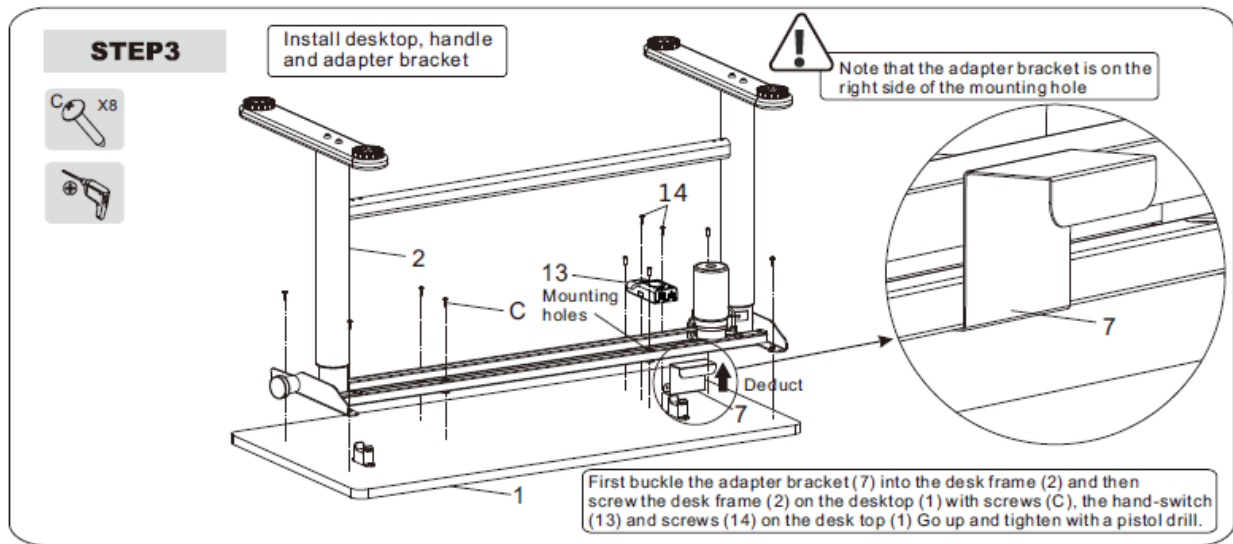
Step 1: Installing the Feet



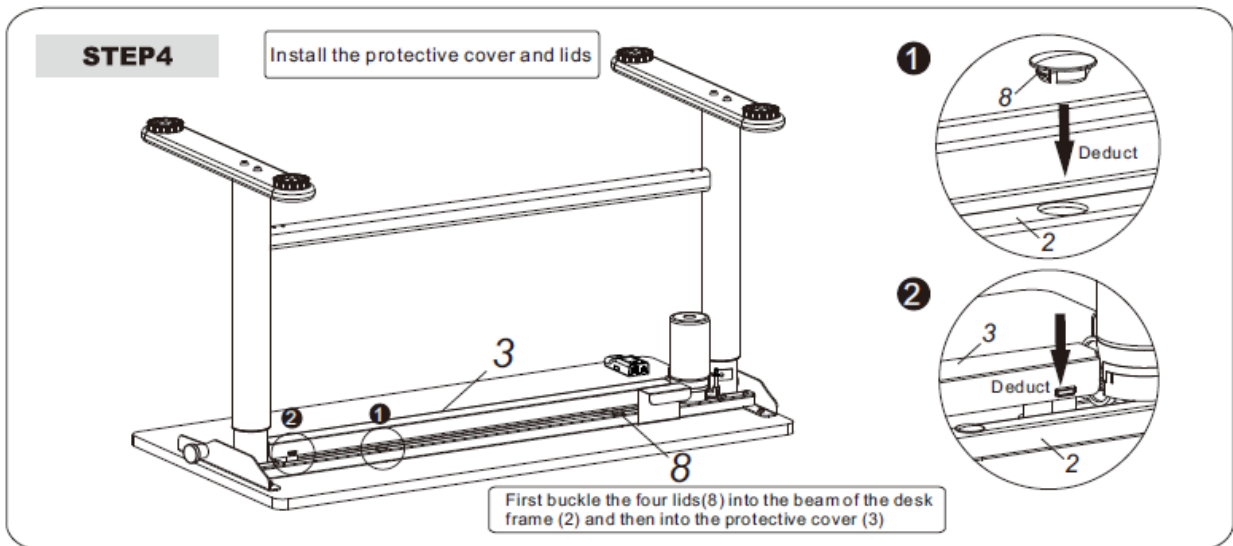
Step 2: Installing the Support Plates



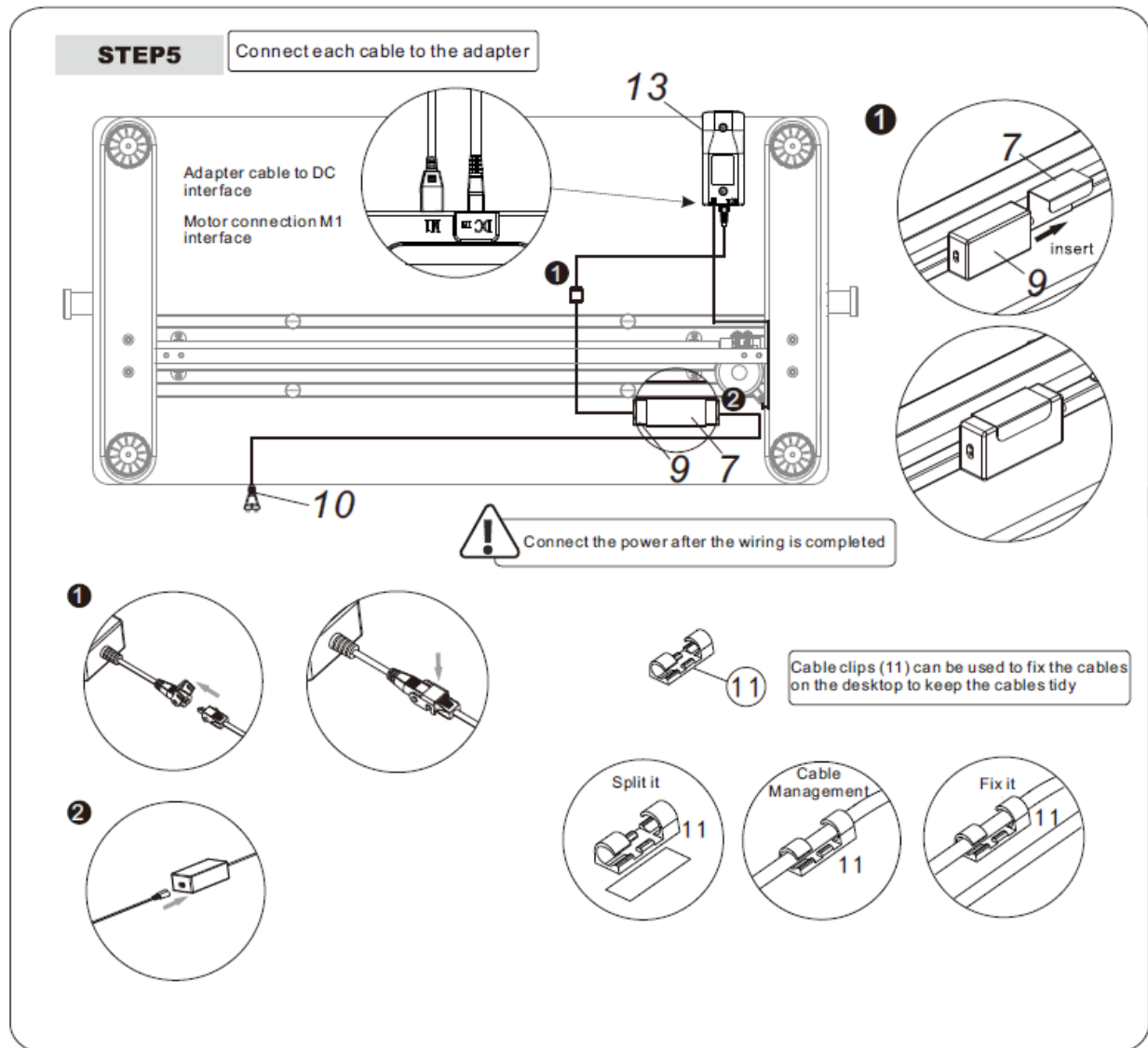
Step 3: Installing the Desktop, Handle and Adaptor Bracket



Step 4: Installing the Protective Cover and Lids



Step 5: Connecting the Cables to the Adaptor



Troubleshooting

- Desk does not respond when pressing and holding the direction arrow.
 - Check if all the cables are connected
- Desk does not adjust up when pressing and holding the up direction arrow.
 - Check if the load is too heavy – should not exceed 88 lbs.
- Frequent repositioning can cause desk to overwork and slow speed.
 - Discontinue power and wait 18 mins before reconnecting to power.
- If the above processes do not work, please contact customer service at 888-840-4557.

Critter Sitters

1-Year Limited Warranty Program

For a period of one (1) year after purchase, Critter Sitters ("Manufacturer") will either repair or replace defective components in accordance with this Limited Warranty. This warranty is between Manufacturer and the original purchaser and is valid only when accompanied by the original purchaser's sales receipt showing original date of purchase and location of purchase. Replacements under this warranty revert back to the date of original purchase for future warranty.

Manufacturer or its authorized dealer can accept or reject warranty claims based on its findings. This warranty applies in normal residential use only and is not intended for commercial use. Manufacturer can make substitutions as required of materials, components, and sub-components of comparable value and utility. This warranty is limited to product repair or replacement (to be determined solely by Manufacturer). Warranty return is limited to only the single affected component.

This warranty covers only manufacturing defects and does not cover normal wear and tear, abuse or misuse, exposure to extreme heat or cold, abrasion or excessive weight. This product is intended to be used in standard installations only. This warranty is invalid if the product is not used for intended purpose. Manufacturer disclaims liability for any aspect of installation and any inconvenience caused by a defective part of a component.

Certain items are not covered by this warranty. These include, but are not limited to the following:

1. Components subjected to abuse, including abuse intended to simulate failure.
2. Damages caused by retailer, shipper or installation crew (such as scratches, dents, tears, chips, etc.).
3. Any part which merely exhibits normal wear yet functions essentially as new, including chips, scratches or stretching of materials and stitching.
4. Tears, punctures, scratches or any damage caused by improper installation or use.
5. Damage to frames/welds resulting from improper assembly is not covered. General frame rusting is not covered.
6. Fading and/or discoloration of fabrics resulting from exposure to the elements, chemicals, oils, fluids or any other cause are not covered.

To make a claim, call the toll-free number below. Please have available a copy of the original sales receipt along with a brief description of the problem. Please also provide your email address and daytime telephone or cell phone #. All items may be charged actual freight costs plus \$15 for handling. Repairs or replacement will be made at the Manufacturer's option. ***Sales and use taxes, plus shipping and handling charges are the responsibility of the consumer.***

THIS IS THE ENTIRE EXCLUSIVE EXPRESS LIMITED LIABILITY. THE MANUFACTURER NEITHER MAKES NOR IS RESPONSIBLE FOR ANY OTHER WARRANTIES, EITHER EXPRESS OR IMPLIED, INCLUDING THOSE OF RETAILING DEALERS. THIS EXCLUSIVE REMEDY IS LIMITED TO RECEIPT OF A CREDIT IN CONNECTION WITH THE REPAIR OR REPLACEMENT OF ANY PRODUCT OR COMPONENT DEEMED TO BE DEFECTIVE UNDER THE TERMS AND CONDITIONS AS STATED IN THIS WARRANTY. NEITHER CAMBRIDGE PRODUCTS, THE PRODUCT MANUFACTURER NOR ITS AGENTS SHALL BE LIABLE IN ANY CASE FOR INCIDENTAL, INDIRECT, SPECIAL OR CONSEQUENTIAL DAMAGES RESULTING FROM THE USE OF THIS PRODUCT OR ARISING OUT OF ANY BREACH OF THIS WARRANTY OR NEGLIGENCE EVEN IF IT HAS BEEN ADVISED OF THE POSSIBILITY OF SUCH DAMAGES. EXCEPT AS OTHERWISE MAY BE REQUIRED BY LAW, THERE ARE NO OTHER EXPRESS OR IMPLIED WARRANTIES OTHER THAN THE WARRANTY DESCRIBED HEREIN, AND ALL OTHER WARRANTIES, INCLUDING ANY IMPLIED WARRANTY OF MERCHANTABILITY OR FITNESS FOR A PARTICULAR PURPOSE ARE EXPRESSLY DISCLAIMED.

**Contact Warranty Services at
1-888-840-4557 or
Luv@MyCritterSitters.com**