

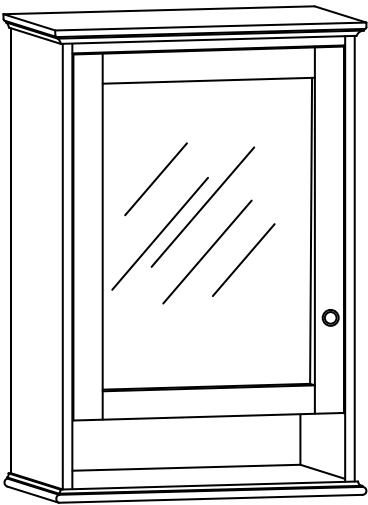
MIRROR CABINET

SKU: C2434MCL-WT(left hinge) C2434MCR-WT(right hinge)
C2434MCL-TG(left hinge) C2434MCR-TG(right hinge)
C2434MCL-NB(left hinge) C2434MCR-NB(right hinge)

Colors/Finishes: White,Titanium Grey,Navy Blue
Nominal Dimension:24W*5.9D*34H inches

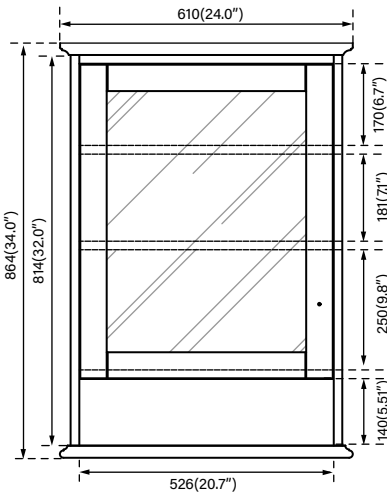
FEATURES:

- Durable solid popular wood frame
- Anti-fog glass
- 1 soft-close door
- Mirror cabinet hangs vertically
- 3 solid wood shelves inside
- Metal alloy hardware with decorative porcelain
- Austria BLUM soft-close hinges system

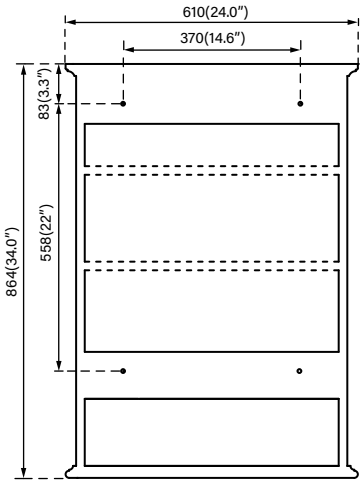


PRODUCT DIAGRAMS:

Front



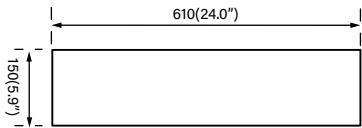
Back




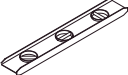




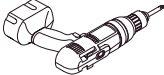
Side



Top



SUGGESTED TOOLS AND MATERIALS:


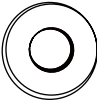




Electrical Drill1/8" Drill BitPencilPhillips ScrewdriverTape MeasureLevelSafety Glasses


INSTALLATION INSTRUCTLONS

We recommend consulting a professional if you are unfamiliar with installing bathroom fixtures and plumbing .We accept accepts no liability for any damage to the floor,medicine cabinet, vanity cabinet, sink,counter top,or personal injury during installation.

PART LIST:



SCREW x4WALL PLUG x4SCREW CAP x4SCREW CAP COVER x4



NOTE: Determine overall mirror dimensions before installation.
Requires two(2) person in installation.

Accessories and parts may vary from the picture above.Depends on the product model and size.

