

STEP BY STEP INSTRUCTIONS

*** BEFORE STARTING REPAIR, ENSURE POWER TO DISPOSAL UNIT IS DISCONNECTED AND DISPOSAL SWITCH IS TAPED IN OFF POSITION**

Chain can have sharp edges – gloves and eye protection should be worn when using this tool.

TO REMOVE DISPOSAL:

1. After disconnecting electrical power to disposal and taping power switch in off position, insert hook into top of garbage disposal by turning sideways and dropping hook all the way down into the grinding chamber making sure hook swings loosely on chain.
2. Gently at first, but then firmly, pull up on chain applying tension on spring.
3. Slide flat lock across drain opening, inserting chain into notch on the lock bar and maintaining tension on the spring.
4. Disengage locking ring on underside of sink to remove disposal by turning the retaining ring clockwise (most models).
5. Holding firmly on chain, slide chain out of the notch in the locking bar and lower disposal to the cabinet below.

TO INSTALL DISPOSAL:

6. Lower hook into top of garbage disposal by turning sideways and dropping hook all the way down from the drain opening above into the grinding chamber, making sure hook swings loosely on chain.
7. Gently at first, but then firmly, pull up on chain making sure the hook is centered in the disposal opening. Lift through sink drain and center disposal on flange, applying tension on spring.
8. Slide flat lock across drain opening, inserting chain into notch on the lock bar, maintaining tension on the spring.
9. Engage locking ring on underside of sink to secure disposal (by lifting it and turning it counter clockwise so that the 3 locking tabs catch the flange above and tighten it counter clockwise most models)
10. Holding firmly on chain, slide chain out of the notch in the locking bar remove tool, placing hook, chain assembly and lock safely away from sink area before connecting electrical power to disposal.

STEP 1



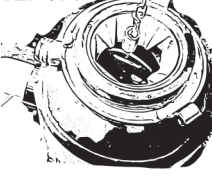
STEP 6



STEP 2



STEP 7A



STEPS 3 & 8



STEP 7B



STEPS 4 & 9



For video instructions, visit disposalphd.com