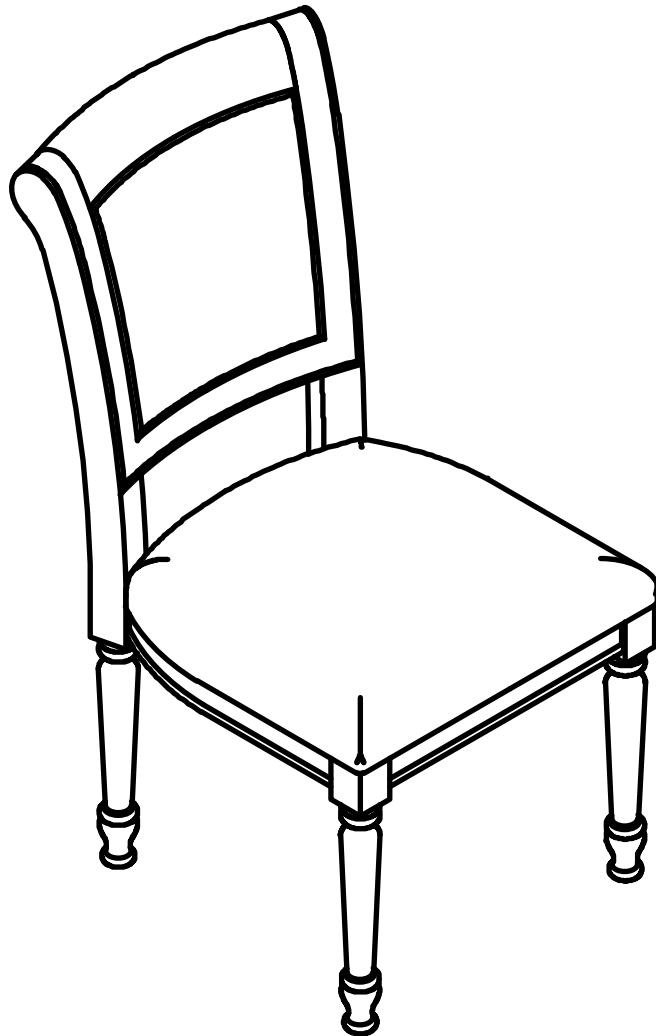


ASSEMBLY INSTRUCTIONS

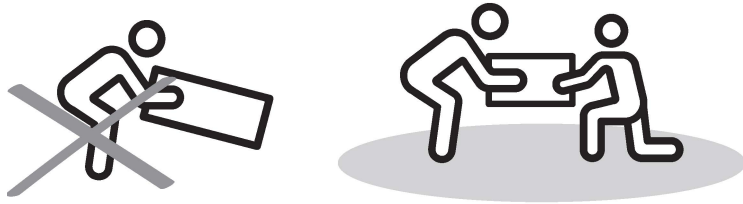
If you have any questions, please feel free to contact us.
Email: lowes.team@qualfurn.net



WF315035AAB
WF315035AAE

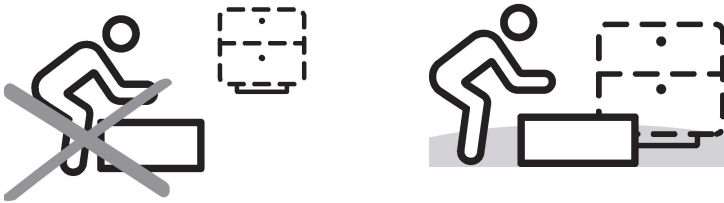
PRE ASSEMBLY INTRODUCTION

We understand building ready-to-assemble furniture can be a challenging experience for some. To help avoid confusion, we have provided some helpful tips that may speed up the process.



Teamwork

ALWAYS have at least two people to help with transporting and assembling the product to avoid potential injury and/or damage.



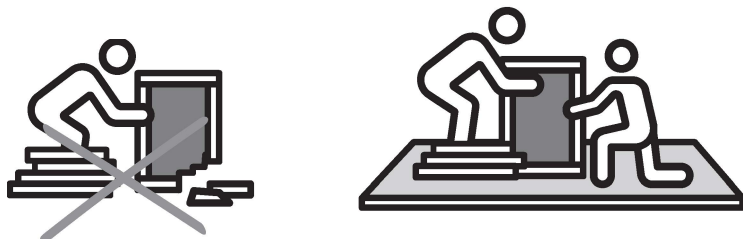
Suitable Location

Assembling near the area of the intended location is highly recommended.



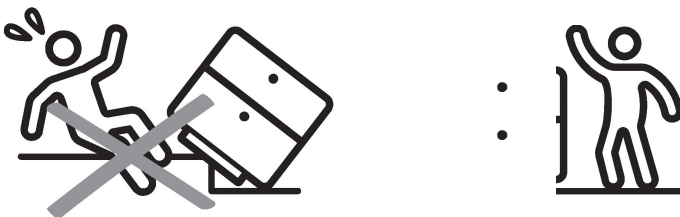
Sufficient Space

Make sure you have enough space to move around during the assembly.



Avoid Scratches

Use cardboard, blankets or a carpeted area while assembling furniture to prevent scratches.

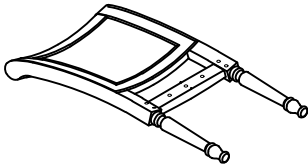


Flat Surface

Make sure the furniture rests on a flat and level surface with each leg evenly touching the floor.

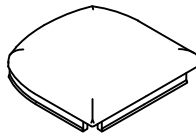
PARTS

#A 1pc



Back chair

#B 1pc



Seat cushion

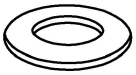
#C 2pcs



Leg

HARDWARE

#1



Flat Washer Ø1/4" x 10pcs

#2



Lock Washer Ø1/4" x 10pcs

#3



Bolt Ø1/4" x 1.5" x 2pcs

#4



Bolt Ø1/4" x 3" x 4pcs

#5



Bolt Ø1/4" x 2.5" x 4pcs

#6



Allen Key 4mm x 1pc

ASSEMBLY INSTRUCTIONS

Step 1

Attach Seat cushion (#B) on the Back chair (#A) by using Flat washer (#1), Lock washer (#2), Bolt (#3) with Allen key (#6).

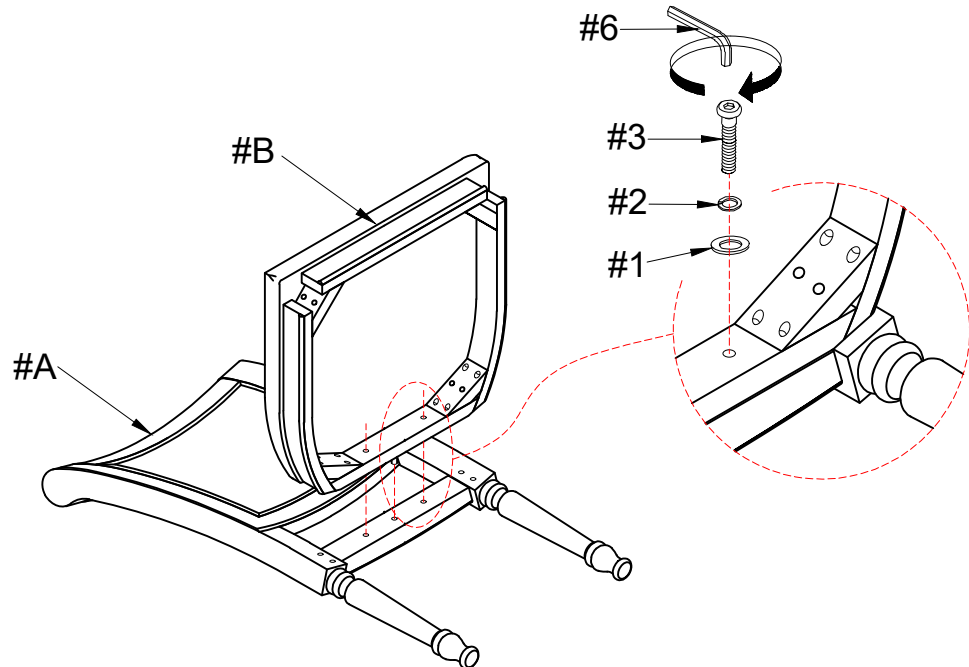
Part (#A) 1pc

Part (#B) 1pc

Hardware (#1) 2pcs

Hardware (#2) 2pcs

Hardware (#3) 2pcs



Step 2

Then connect Seat cushion (#B) to the Back chair (#A) by using Flat washer (#1), Lock washer (#2), Bolt (#4) with Allen key (#6).

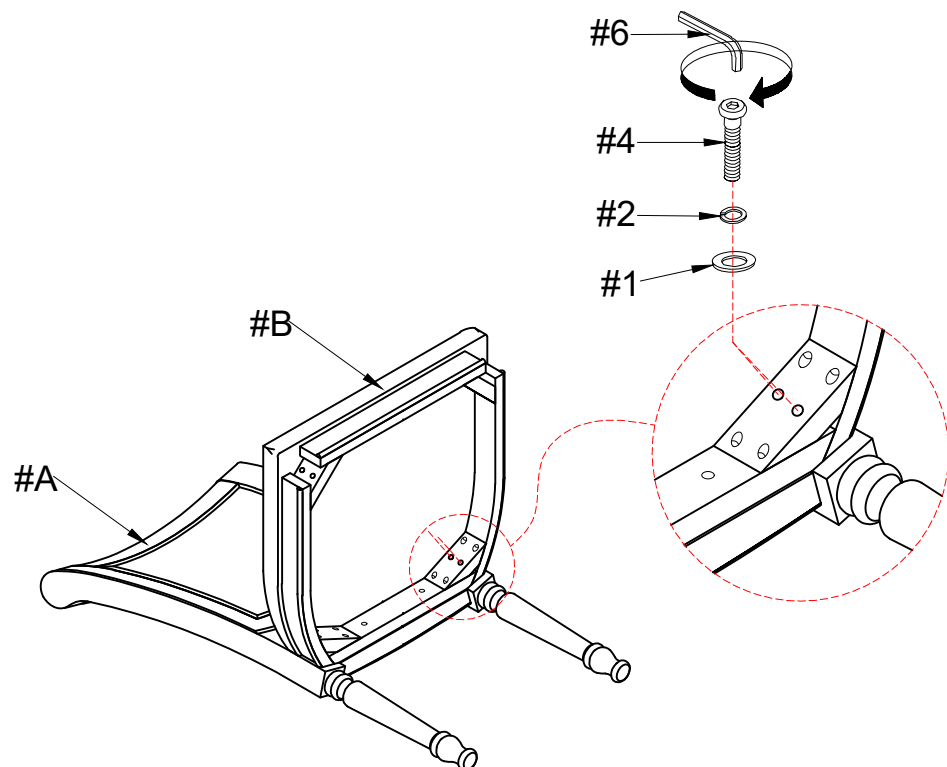
Part (#A) 1pc

Part (#B) 1pc

Hardware (#1) 4pcs

Hardware (#2) 4pcs

Hardware (#4) 4pcs



ASSEMBLY INSTRUCTIONS

Step 3

Part (#C) 2pcs

Hardware (#1) 4pcs

Hardware (#2) 4pcs

Hardware (#5) 4pcs

Attach Leg (#C) on the Chair of step 2 by using Flat washer (#1), Lock washer (#2), Bolt (#5) with Allen key (#6).

