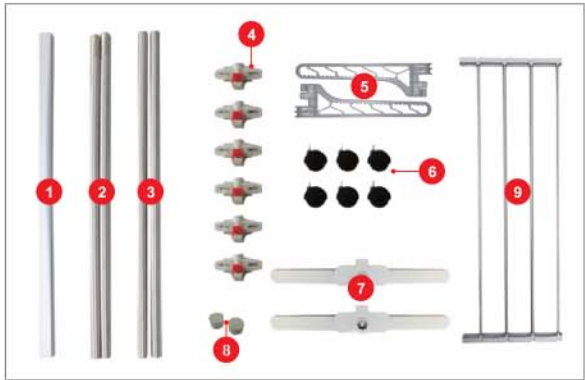


Hulife Home Laundry Rack Explore Manual

⚠ Precautions

- ✓ Please read before assembling the components and using the product
- ✗ Do not put fingers into the opening of the pipe
- 🚫 Keep your children away from the laundry rack when assembling, using and storing it.



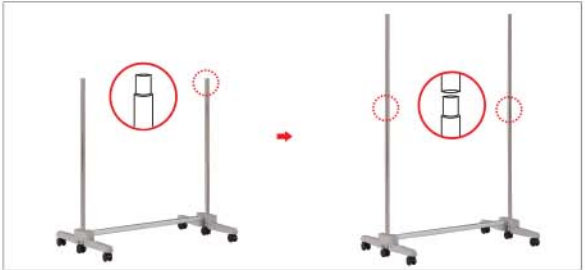
Components

1. Square pipe 1ea
2. Candle type Pipes 2ea
3. Straight pipes 2ea
4. T-type connectors 6ea
5. Side wings 2ea
6. Wheels 6ea
7. Rack Legs 2ea
8. Caps 2ea
9. Rack wing shelves 6ea



STEP1 Rack Leg Assembly

1. Connect the wheels to each leg.
2. Connect the square pipe to legs.
3. Push the square pipe to both legs until you hear a 'click'.



STEP2 Rack Wing Shelf SET Assembly

1. Connect Candle pipes to the legs.
2. Connect Straight pipes to Candle pipes .



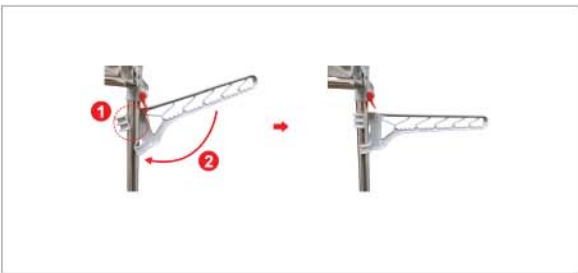
STEP3 Rack pillars & Wings Assembly

1. On the T-type connector, the part with the red switch and the 'top' lettering faces the front.
2. Push the wings in the direction of the arrow, to connect them to both sides of T-type connectors until you hear a 'click'.
3. Place the wing horizontally and push it to the inside of the T-type connector to lock it.



STEP4 Rack pillars Assembly

1. Ensure the 'top' lettering and the red switch points upward (Unlock) properly on the T-type connector before connecting to the pillars.
2. Push the wings downward to connect them to the pillars.
3. Adjust the height using the T-type connector.
4. Push the red switch downwards to lock the position and repeat for other wings.



STEP5 Side Wings Assembly

1. As shown in the picture, fix the side wings to each pillar.



STEP6 Cap Assembly

1. Put a cap on the top.



Completion Laundry Rack Assembling Complete

- Refer to the steps