

Quick Start Guide for Pressurized Hopper Gun

For spray application of water-based architectural and texture coatings.
Recommended gun settings for different patterns can be found on page 19 of the Operation manual.

WARNING



Read Operation manual 3A5725 for complete instructions and warnings.

This guide is not a substitute for reading and understanding all operation manuals and warning labels supplied with the equipment. It is important that you read and understand all warnings and instructions before operating this equipment.



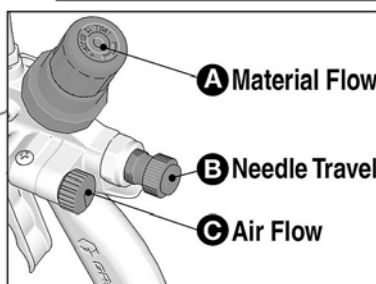
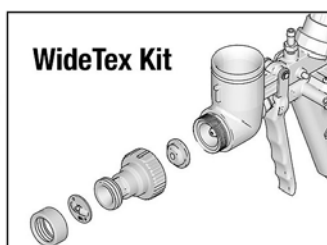
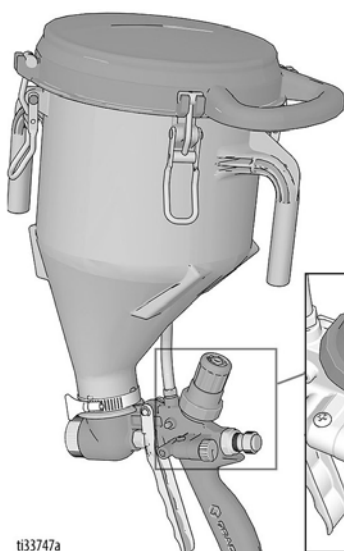
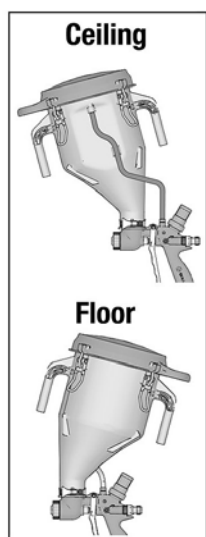
Follow the pressure relief procedure and wear protective equipment including but not limited to protective eye wear.



RUPTURE HAZARD: Over-pressurizing the hopper can result in rupture. To avoid injury, only pressurize hopper by connecting air supply tube to barbs on hopper and gun.

FAILURE TO FOLLOW ALL WARNINGS CAN RESULT IN SERIOUS INJURY, AMPUTATION OR DEATH.

COMPONENT IDENTIFICATION - 25D496



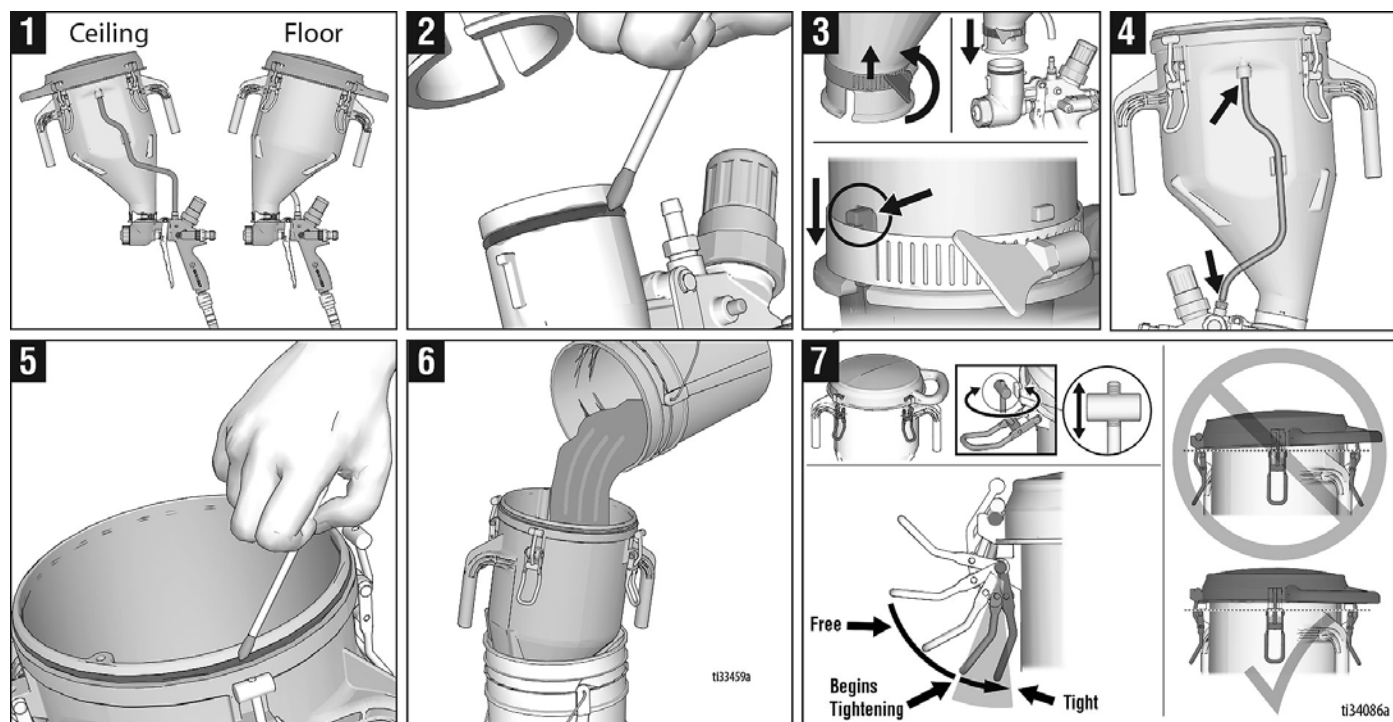
A. Material Flow Regulator: Pressurizes the material hopper and adjusts material flow. Turn counterclockwise to decrease flow; turn clockwise to increase flow. Push down to lock; pull up to unlock.

B. Needle Travel Adjustment Knob: Adjusts the positions of the gun needle in relation to the spray tip. Turn clockwise to limit needle travel and reduce material flow; turn counterclockwise to increase needle travel and increase flow.

C. Air Flow Valve: Adjusts the amount of atomizing air that is sent to the spray tip to control the spray pattern. Turn clockwise to decrease air flow; turn counterclockwise to increase air flow.



SETUP

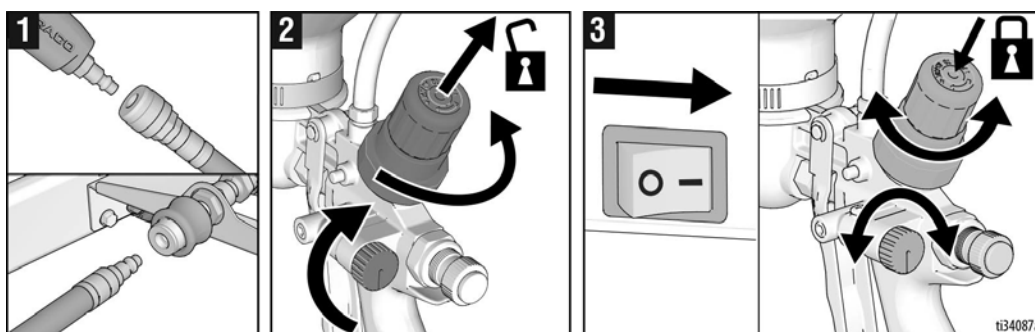


1: When spraying ceilings, the hopper should be tilted forward. When spraying floors, the hopper should be tilted backward. **2:** Apply grease to o-ring on the gun. **3:** Loosen hopper clamp, slide it over the rib and toward the top of the hopper. Position hopper outlet over the hopper port on the gun and push hopper down as far as it will go. Slide down hopper clamp and hand tighten. **4:** Attach tube from hopper barb to gun barb. **5:** Apply grease to hopper o-ring. **6:** Fill hopper with prepared texture material. **7:** Assemble lid with four clamps. Evenly tighten all four clamps. If there is a leak from the lid, adjust the clamp tension. The lid should be tightened evenly on the hopper.

NOTICE

Over-tightening the lid may damage the hopper and/or hopper lid.

OPERATION



1: Connect one end of air hose to the compressor air outlet fitting and the other end to the gun air inlet fitting. **2:** Pull up on material flow regulator knob to unlock. Completely close the air flow valve by turning the knob clockwise; turn the material flow regulator to the lowest setting counterclockwise. **3:** Turn air compressor power switch ON. Adjust air flow valve and material flow regulator on hopper gun for desired texture. Push down on the material flow regulator to lock settings.

SPRAY PATTERNS (see page 19 of the Operation manual for nozzle & tip recommendations)

Nozzle Pattern WideTex Pattern

