



ITEM #0044687, 0043676, 0044622

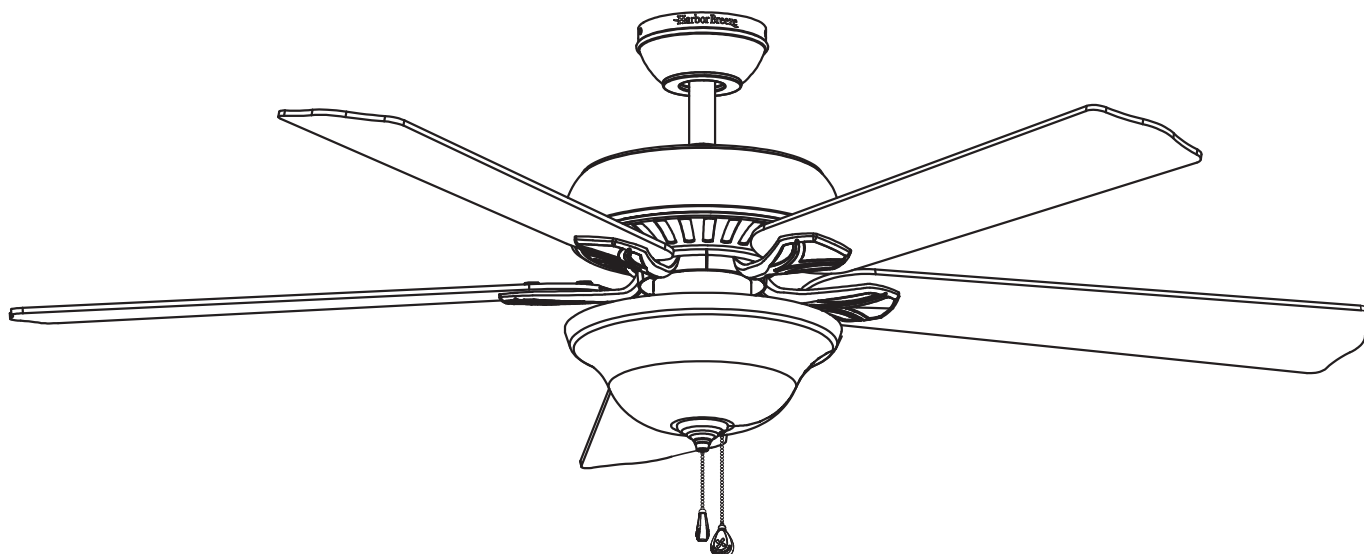
## CROSSWINDS CEILING FAN

MODEL #00815, 00816, 00817

UL MODEL #SLC52

Harbor Breeze® is a registered trademark  
of LF, LLC. All Rights Reserved.

Español p. 20



**ATTACH YOUR RECEIPT HERE**

Serial Number \_\_\_\_\_ Purchase Date \_\_\_\_\_



**Questions, problems, missing parts?** Before returning to your retailer, call our customer service department at 1-800-643-0067, 8 a.m. - 6 p.m., EST, Monday - Thursday, 8 a.m. - 5 p.m., EST, Friday.

TABLE OF CONTENTS

---

Safety Information ..... 3

Package Contents ..... 4

Hardware Contents ..... 5

Preparation ..... 5

Initial Installation ..... 6

Downrod Style Fan Mounting ..... 7

Closemount Style Fan Mounting ..... 8

Wiring ..... 10

Final Installation ..... 11

Operation Instructions ..... 17

Care and Maintenance ..... 18

Troubleshooting ..... 18

Warranty ..... 19

Replacement Parts List ..... 19

## **SAFETY INFORMATION**

### **READ AND SAVE THESE INSTRUCTIONS**

Please read and understand this entire manual before attempting to assemble, operate or install the product.

- When using an existing outlet box, be sure the box is securely attached to the building structure and can support the full weight of the fan, so as to avoid potential serious injury or death.
- All wiring must be in accordance with the National Electrical Code “ANSI/NFPA 70-1999” and local electrical codes. Electrical installation should be performed by a qualified licensed electrician.
- Do not use bulbs having a wattage greater than the maximum value stated on the fixture and in this manual. Using a higher wattage bulb than specified will increase fixture temperature and cause risk of fire. Disconnect the electrical supply circuit to the fan before installing light kit.
- Electrical diagrams are for reference only.
- The net weight of this fan including the light kit is: 18.04 lbs.

### **WARNING**

#### **ELECTRIC SHOCK HAZARD**

To reduce the risk of electric shock, do not use this fan with any solid-state speed control device.

### **WARNING**

#### **SHOCK HAZARD**

To reduce the risk of shock, this fan must be installed with an isolation wall control/switch.

### **WARNING**

#### **ELECTRIC SHOCK HAZARD**

To reduce the risk of electric shock, make sure electricity has been turned off at the circuit breaker or fuse box before beginning installation.

### **WARNING**

#### **PERSONAL INJURY HAZARD**

Reduce the risk of personal injury, do not bend the blade brackets when installing the brackets, balancing the blades, or cleaning the fan. Do not insert foreign objects in between rotating fan blades.

### **WARNING**

#### **FIRE, ELECTRICAL SHOCK OR PERSONAL INJURY HAZARD**

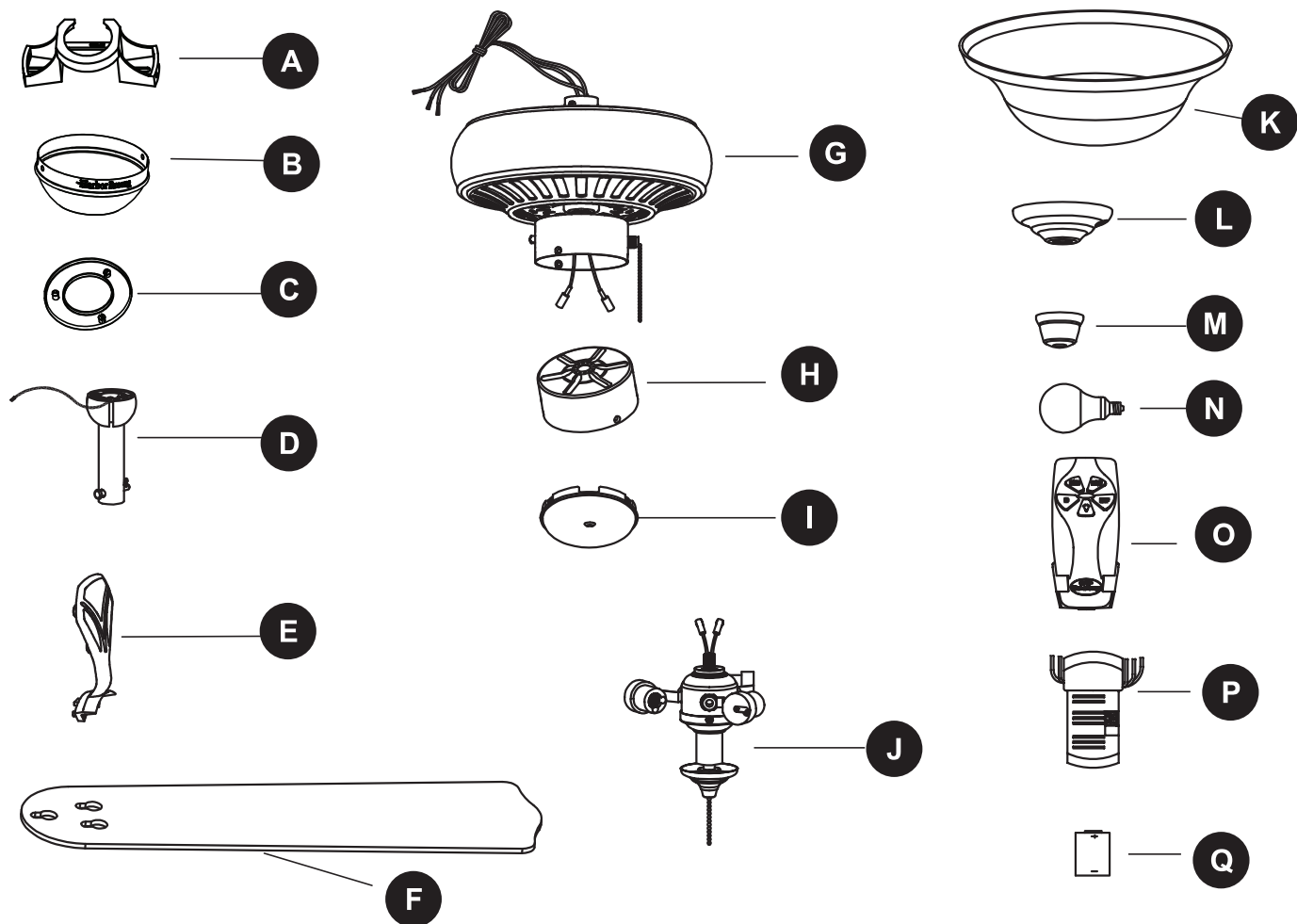
To reduce the risk of fire, electric shock, or personal injury, mount to outlet box marked “ACCEPTABLE FOR FAN SUPPORT,” and use mounting screws provided with the outlet box. Most outlet boxes commonly used for the support of lighting fixtures are not acceptable for fan support and may need to be replaced. Consult a qualified electrician if in doubt.

### **CAUTION**

#### **PERSONAL INJURY HAZARD**

To reduce the risk of injury to persons, install fan so that the blade is at least 7 ft. above the floor.

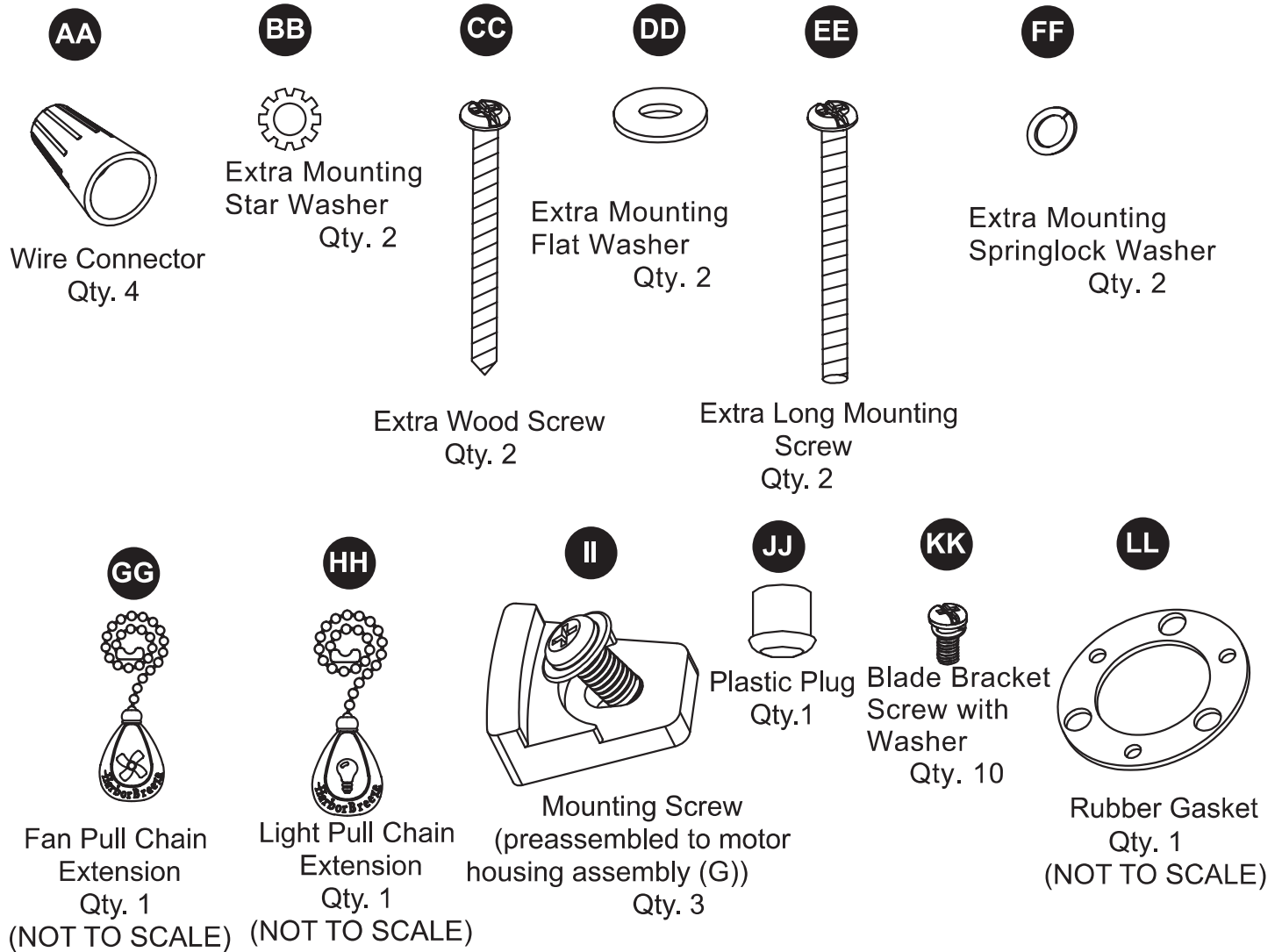
## PACKAGE CONTENTS



| PART | DESCRIPTION  | QUANTITY |
|------|--|----------|
| A    | Mounting Bracket (preassembled to canopy (B))      | 1        |
| B    | Canopy   | 1        |
| C    | Canopy Cover (preassembled to canopy (B))          | 1        |
| D    | 4.5 in. Downrod Assembly                           | 1        |
| E    | Blade Bracket                                      | 5        |
| F    | Blade  | 5        |
| G    | Motor Housing                                      | 1        |
| H    | Switch Housing (preassembled to motor housing (G)) | 1        |
| I    | Switch Housing Cover                               | 1        |
| J    | Light Kit  | 1        |
| K    | Glass Bowl   | 1        |
| L    | Bowl Cap (preassembled to light kit (J))           | 1        |
| M    | Finial (preassembled to light kit (J))             | 1        |
| N    | Bulb   | 3        |
| O    | Remote Transmitter                                 | 1        |
| P    | Remote Receiver                                    | 1        |
| Q    | Battery  | 1        |

## HARDWARE CONTENTS (shown actual size)

---



Note: The extra hardware (BB, CC, DD, EE, FF) should be used in Step 4 for the mounting bracket installation if they are needed.

## PREPARATION

---

Before beginning assembly of product, make sure all parts are present. Compare parts with package contents list and hardware contents above. If any part is missing or damaged, do not attempt to assemble the product. Contact customer service for replacement parts.

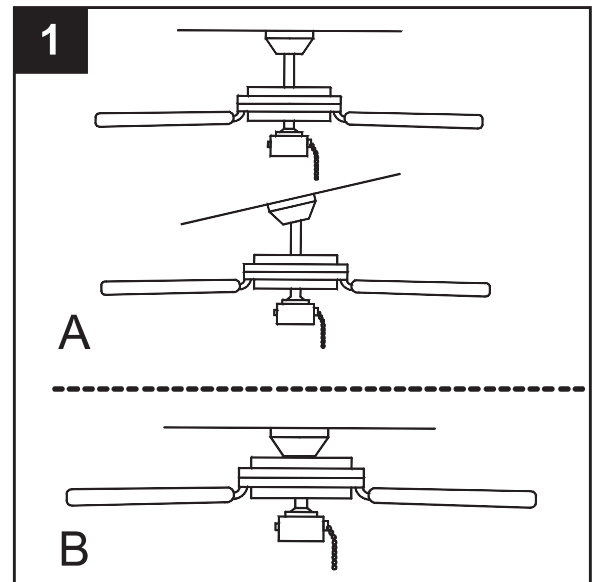
**Estimated Assembly Time: 45 minutes**

Tools Required for Assembly (not included): Phillips screwdriver, step ladder, electrical tape, pliers, wire cutter, wire stripper.

## INITIAL INSTALLATION

1. Determine mounting method to use.  
A - Downrod Mount (normal or angled ceiling)  
B - Closemount (normal ceiling only)

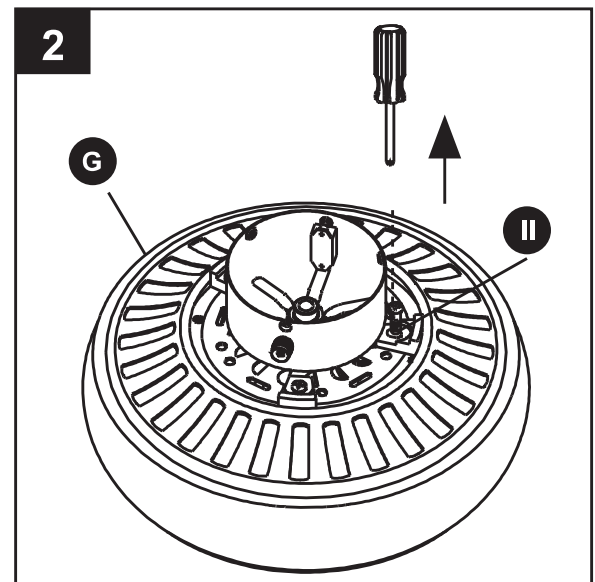
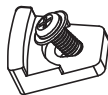
**Important:** If using the angle mount, check to make sure the ceiling angle is not steeper than 14°.



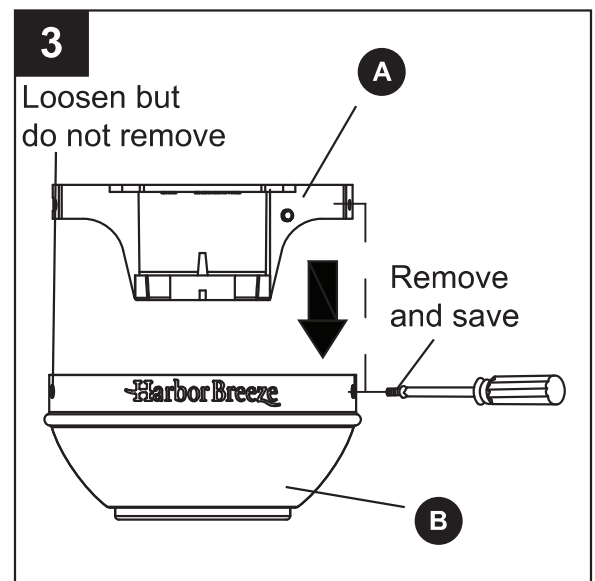
2. Remove the three mounting screws (II) from the underside of the motor housing (G). Discard the three rubbers and the three mounting screws (II).

### Hardware Used

- II Mounting screw x 3



3. Remove the mounting bracket (A) from the canopy (B) by loosening the four screws on the top of the canopy (B). Remove the two non-slotted screws and save, then loosen the slotted screws. This will enable you to remove the mounting bracket (A).

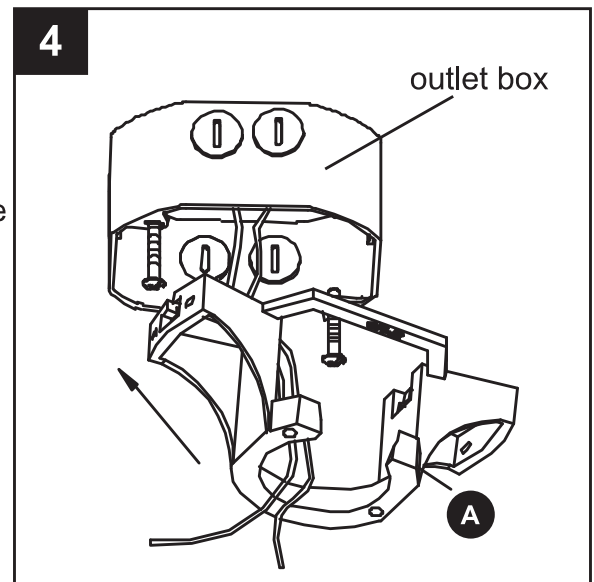


## INITIAL INSTALLATION

4. Install the mounting bracket (A) to the outlet box (not included), sliding the mounting bracket (A) over the two outlet box screws (not included). Securely tighten the two outlet box screws.

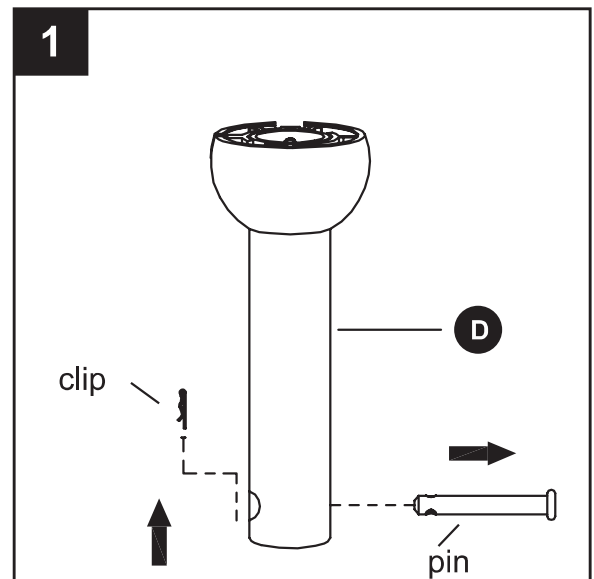
**IMPORTANT:** If using the angle mount, make sure open end of mounting bracket (A) is installed facing the ceiling.

Follow mounting instructions for “Downrod Style Fan Mounting” or “Closemount Style Fan Mounting” depending on mounting method (A or B) chosen in Step 1 on previous page.

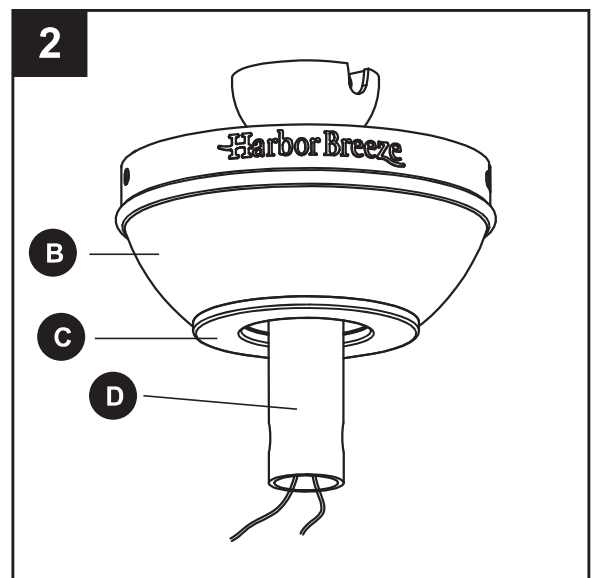


## DOWNROD STYLE FAN MOUNTING

1. Remove the pin and clip from the 4.5 in. downrod assembly (D).

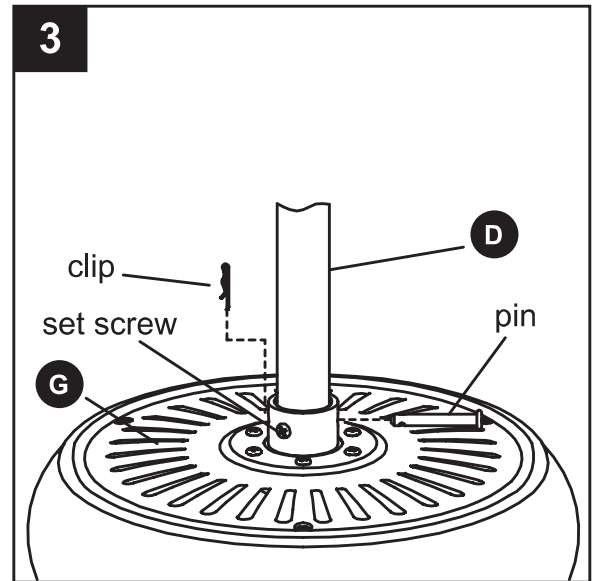


2. Insert 4.5 in. downrod assembly (D) through canopy (B), canopy cover (C). Thread wires from motor housing (G) through 4.5 in. downrod assembly (D).



## DOWNROD STYLE FAN MOUNTING

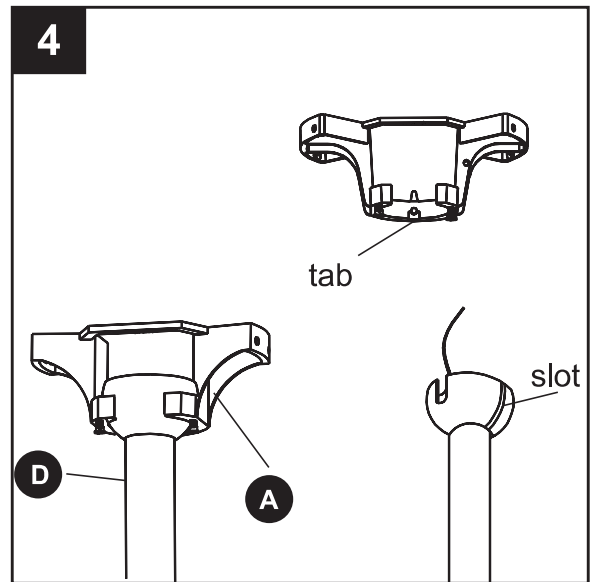
- Loosen the two set screws from the yoke on the motor housing (G). Slip 4.5 in. downrod assembly (D) into housing yoke on the motor housing (G), aligning holes in 4.5 in. downrod assembly (D) and yoke. Insert the pin through yoke and downrod (D). Insert clip into pin until it snaps into place. Tighten set screws.



- Install hanger ball on the top of 4.5 in. downrod assembly (D) into mounting bracket (A) opening. Rotate fan until slot on hanger ball engages the tab on the mounting bracket (A).

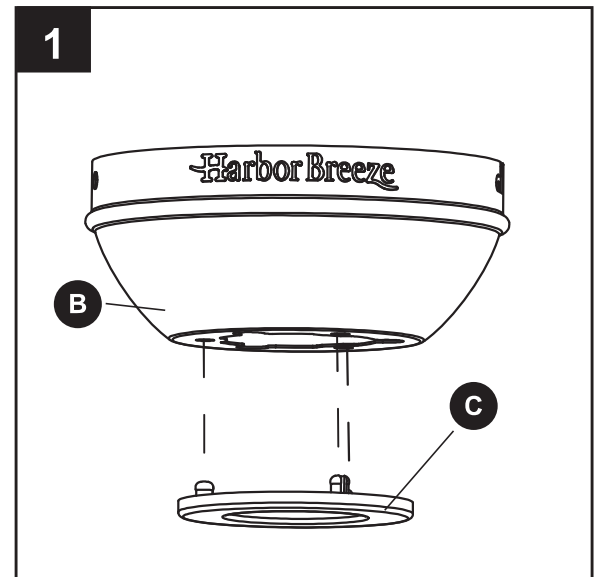
**Warning:** Be carefully when aligning the tab to the slot! If not fully engaged, there is a possibility of fan falling, which may result in serious injury or death.

You may now proceed to the **WIRING** section on page 10.



## CLOSEMOUNT STYLE FAN MOUNTING

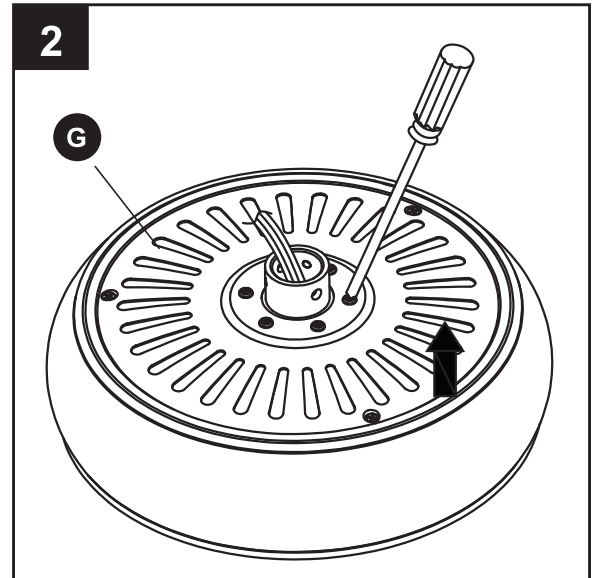
- Remove the canopy cover (C) from the bottom of the canopy (B).





## CLOSEMOUNT STYLE FAN MOUNTING

2. Remove every other screw from the top of motor housing (G) and save.

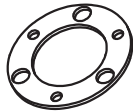


3. Place the rubber gasket (LL) over the remaining screws. Pull wires through hole in canopy (B) and attach canopy (B) to motor housing (G). Align the mounting holes with the holes in the motor and fasten using the three screws removed in previous step. Tighten the screws securely.

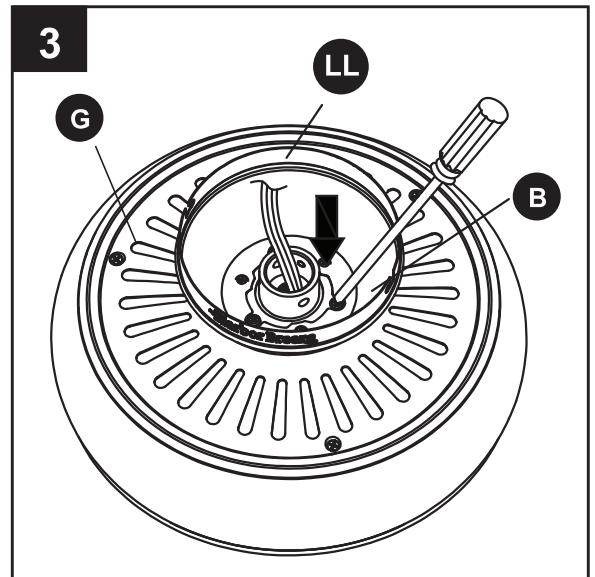
### Hardware Used

LL

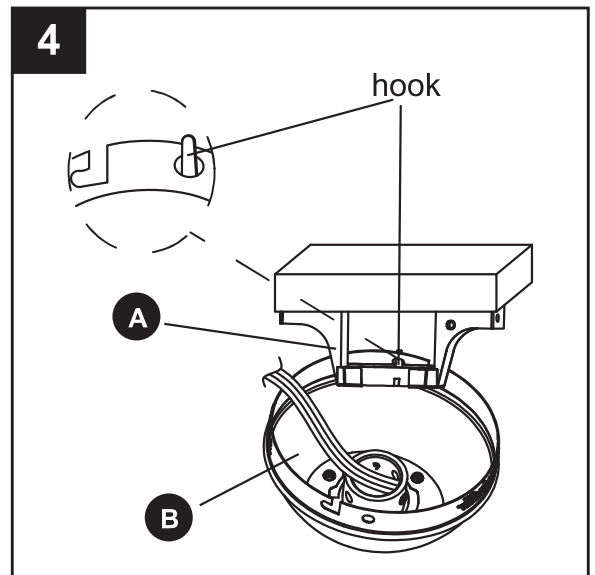
Rubber gasket



x 1



4. Hang the fan on the hook on the mounting bracket (A) using one of the non-slotted holes in the canopy (B).



## WIRING

The fan and light kit can be controlled by pull chain or remote. If installing fan without remote control option, see Step 1. If installing fan with remote control option, see Steps 2~4.

### 1. If installing fan without remote control option.

#### Wire as follows:

Connect the **BLACK** and **BLUE** wires from fan to **BLACK** wire from ceiling with wire connector (AA) provided. Connect **WHITE** wire from the fan to **WHITE** wire from ceiling with wire connector (AA) provided. Connect all **GROUND (GREEN)** wires together from fan to **GROUND (GREEN)** wire from ceiling with wire connector (AA) provided.

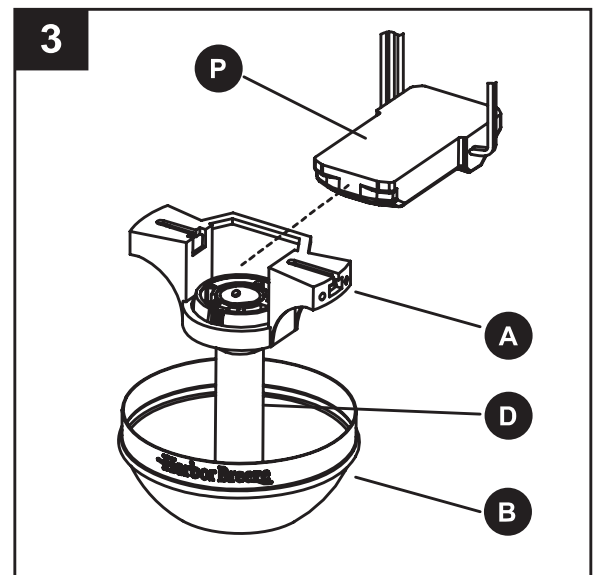
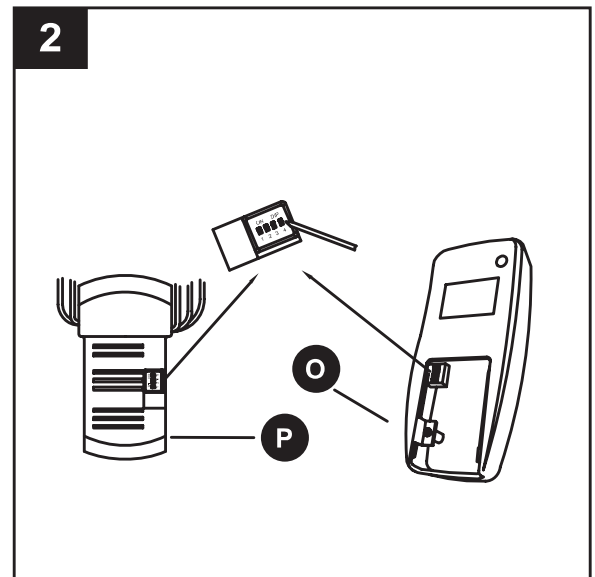
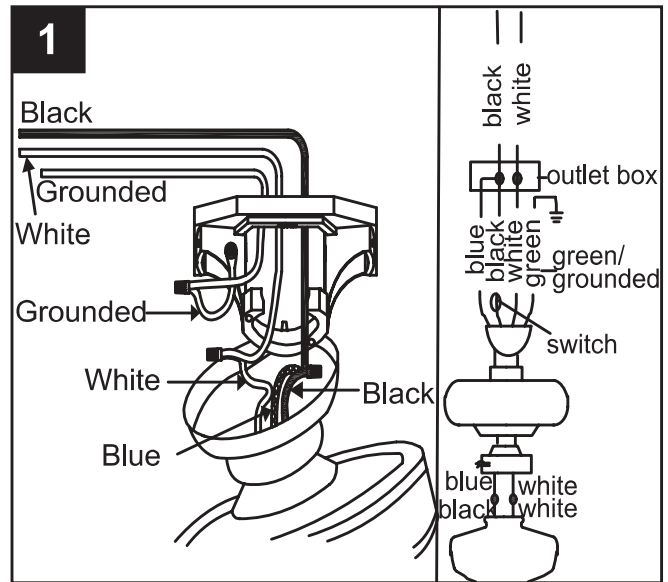
**Note:** Black wire is hot power for fan. Blue wire is hot power for light kit. White wire is common for fan and light kit. Green wire is grounded wire. If house wires are different colors than referred to above, stop immediately. It is recommended a professional electrician to determine proper wiring.

You may now proceed to the Step 5.

### 2. If installing fan with remote control option. Wire as follows:

Remove the transmitter battery cover. Set the code switches on the remote transmitter (O) and remote receiver (P) to the same setting. This must be done so the units will communicate properly; if they are not the same, the fan will not work.

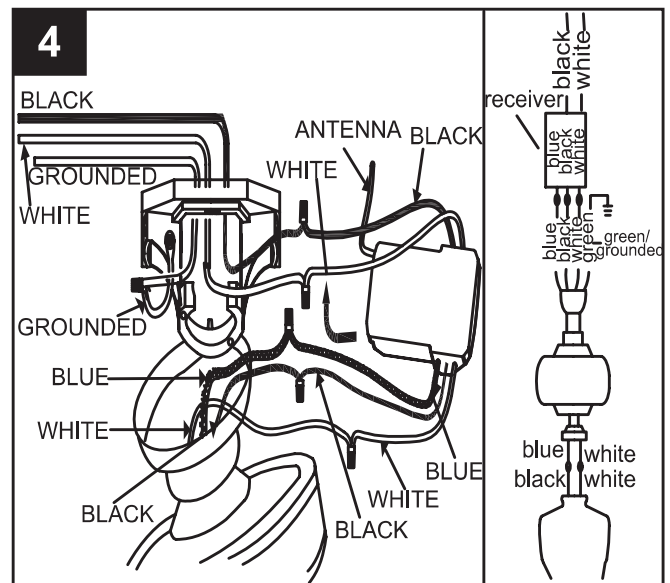
### 3. Insert the remote receiver (P) into the mounting bracket (A) with the flat side of the receiver facing the ceiling.



## WIRING

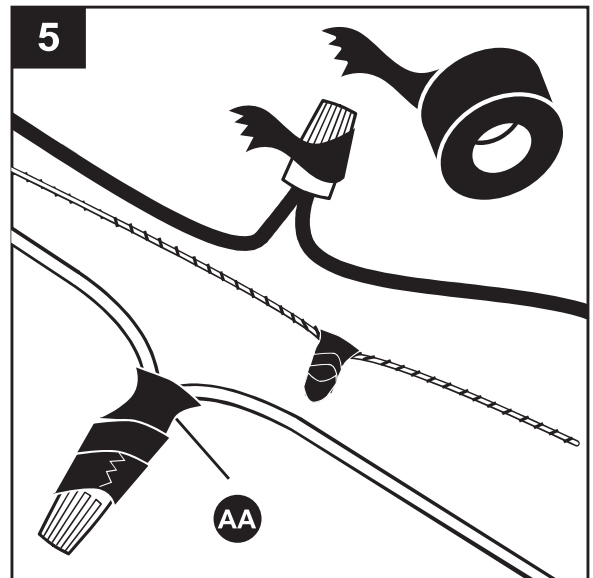
4. Connect the **WHITE** wire from fan to the **WHITE** wire from the receiver marked **TO MOTOR N**. Connect the **WHITE** wire from the ceiling to the **WHITE** wire from the receiver marked **AC IN N**. Connect the **BLACK** wire from the fan to the **BLACK** wire from the receiver marked **MOTOR L**. Connect the **BLACK** wire from ceiling to the **BLACK** wire from the receiver marked **AC IN L**. Connect the **BLUE** wire from the fan to the **BLUE** wire from the receiver marked **FOR LIGHT**. Connect all **GROUND**ED (**GREEN**) wires together from fan to **GROUND**ED (**GREEN**) wire from ceiling.

**Note:** You can cut out the extra wire as you need.



5. To connect wires, twist wire ends together and screw wire with wire connectors (AA) on in a clockwise direction. Tape the wire connectors (AA) and wires together. The wires should be spread apart with the grounded conductor and the equipment-grounding conductor on one side of the outlet box and the ungrounded conductor on the other side of the outlet box. Be sure no bare wire or wire strands are visible after making connection. Place green and white connections on opposite side of box from the black connection. The splices should be turned upward and pushed carefully up into the outlet box.

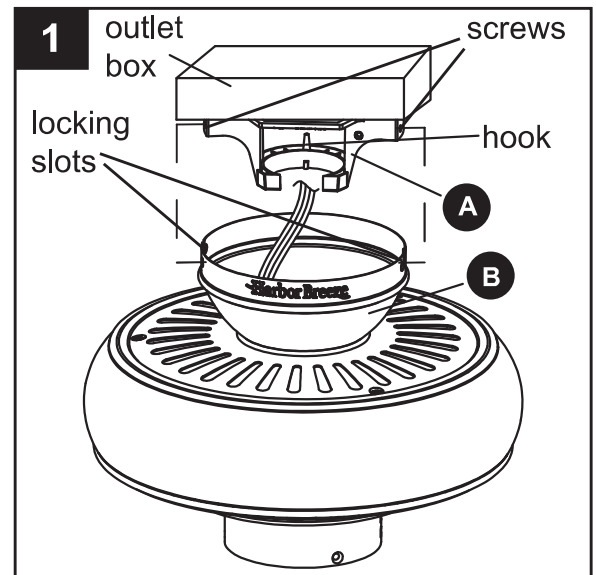
### Hardware Used



## FINAL INSTALLATION

If you installed the fan with “Closemount Style Fan Mounting”, continue to Steps 1~2. If you installed the fan with “Downrod Style Fan Mounting”, skip to Step 3.

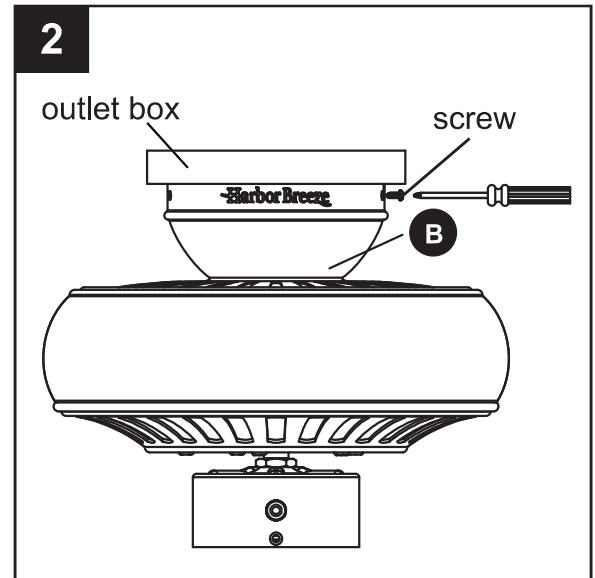
1. Remove the fan from the hook on the mounting bracket (A). Align the locking slots of the canopy (B) with the two screws in the mounting bracket (A). Push up to engage the slots and turn clockwise to lock in place. Immediately tighten the two screws firmly.



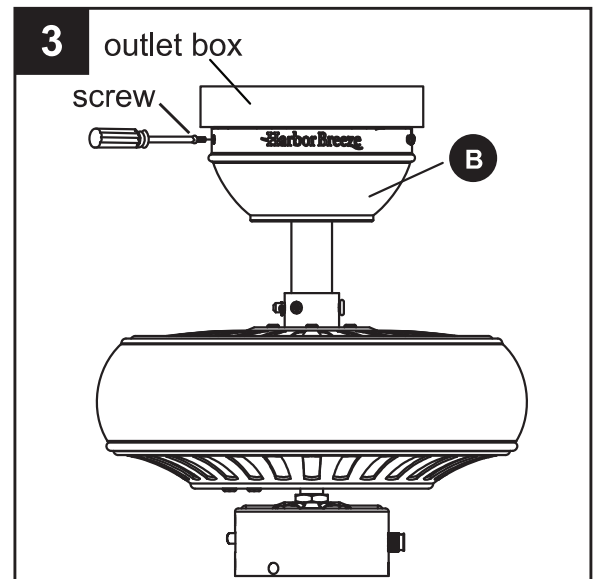
## FINAL INSTALLATION

2. Install the two screws that were removed in previous step and tighten securely.

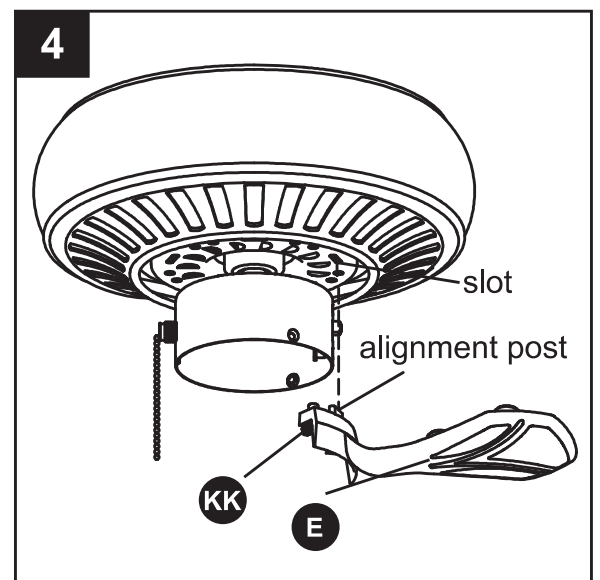
**You may now proceed to the Step 4.**



3. Directly align the locking slots of the canopy (B) with the two screws in the mounting bracket (A). Push up to engage the slots and turn clockwise to lock in place. Immediately tighten the two screws firmly. Install the two screws that were removed in previous step and tighten securely.



4. Fasten the blade bracket (E) to the fan motor by inserting the alignment post into the slot on the bottom of the motor and tightening the blade bracket screws with washers (KK). Please note that the blade bracket screws with washers (KK) are pre-installed into the blade bracket (E). Repeat the steps for the remaining blade brackets (E).

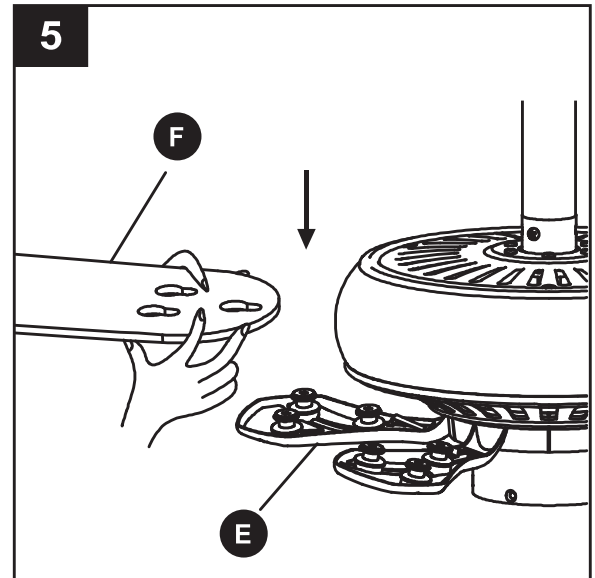


### Hardware Used

**KK** Blade Bracket Screw with Washer x 10

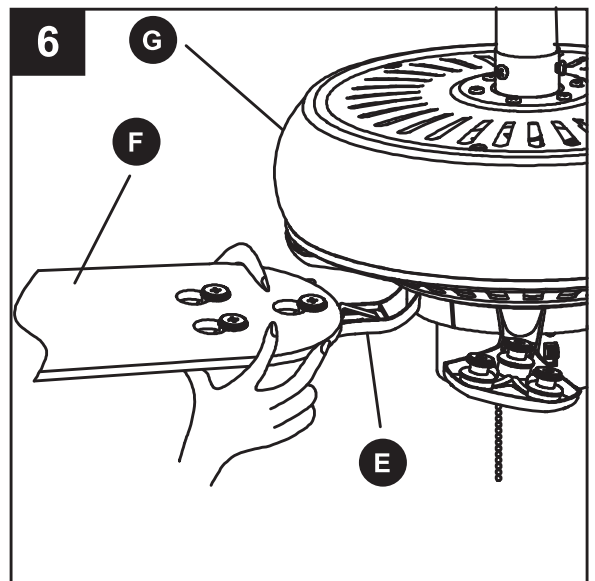
## FINAL INSTALLATION

5. Fasten the fan blade (F) to the blade bracket (E) by aligning the three key slot holes in the blade (F) with three posts on the top of the blade bracket (E) and press the blade (F) with both hands close to the blade bracket (E) and press the blade (F) down firmly. Ensure the key slot holes are properly seated on the blade bracket (E).

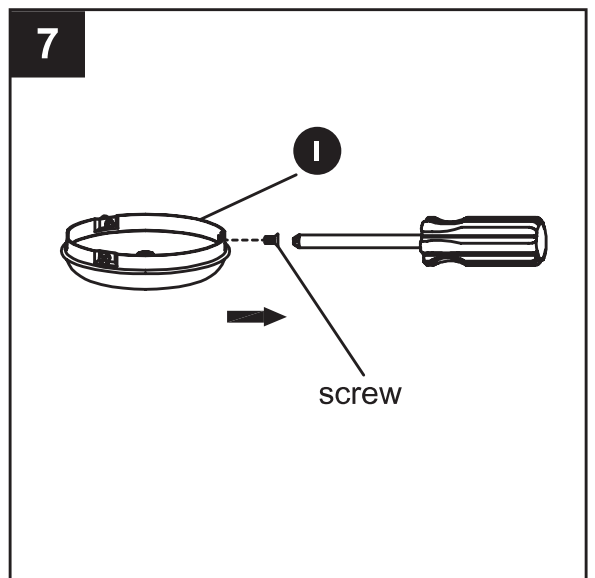


6. While still holding the blade (F) down with hands, firmly slide the blade (F) away from the motor housing until the blade engages in the locking mechanism. Make sure the steel locking mechanism at the rear of the blade bracket (F) springs upward and butts against the edge of the blade (E), indicating a secure connection.

NOTE: Visually inspect the top of the blade bracket (E) to ensure that the locking mechanism is securely in place. Repeat for the remaining blades (F).



7. Remove the three screws from the switch housing cover (I).



## FINAL INSTALLATION

If you wish to use the fan **WITHOUT** the light kit, continue to Step 8. If you wish to use the fan **WITH** light kit, skip to Step 9.

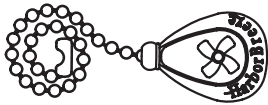
8. Attach the switch housing cover (I) to the switch housing (H). Align holes in switch housing cover (I) with holes on outer edge of the switch housing (H). (**Note:** The wide gap in the edge of the switch housing cover (I) should align with reverse switch on the switch housing (H).) Re-insert screws and secure all screws.

Add fan pull chain extension (GG).

If using fan **WITHOUT** the light kit, assembly is complete.

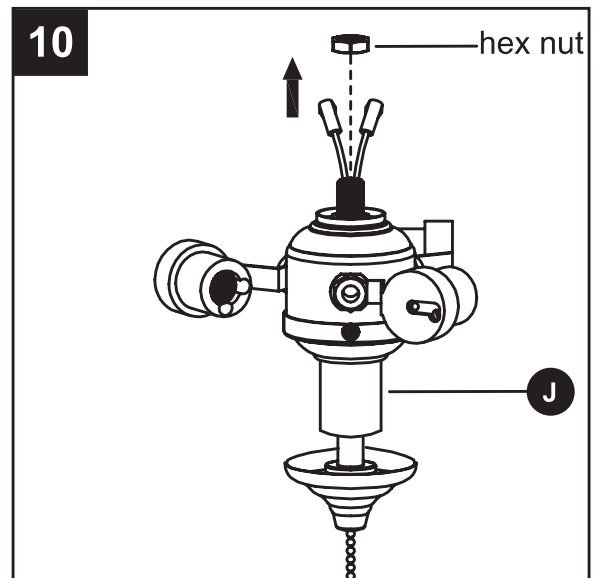
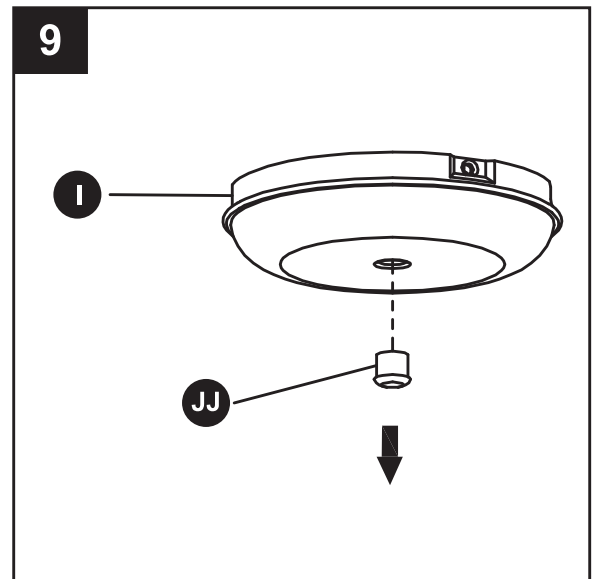
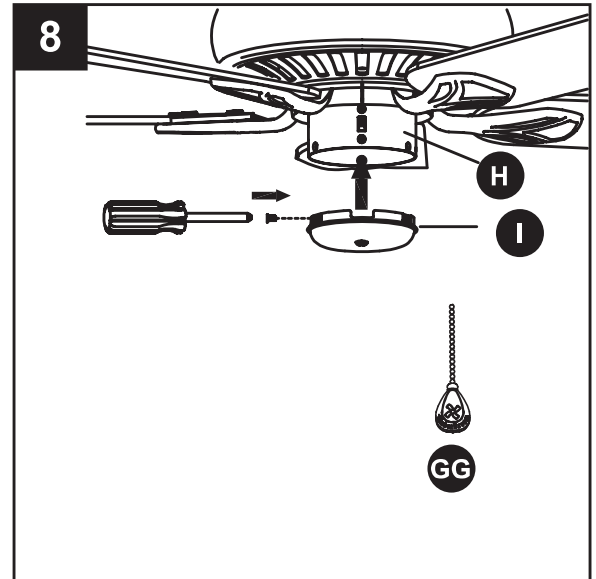
### Hardware Used

- GG** Fan pull chain extension x1



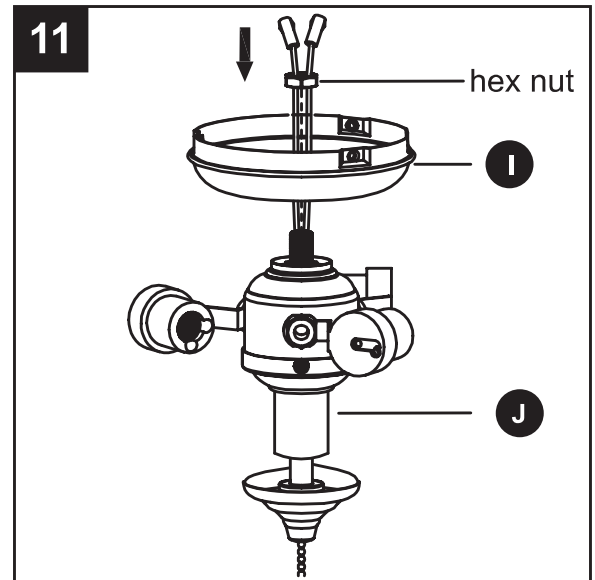
9. Remove the plug (JJ) from the center hole in the switch housing cover (I).

10. Remove the hex nut from the light kit (J).



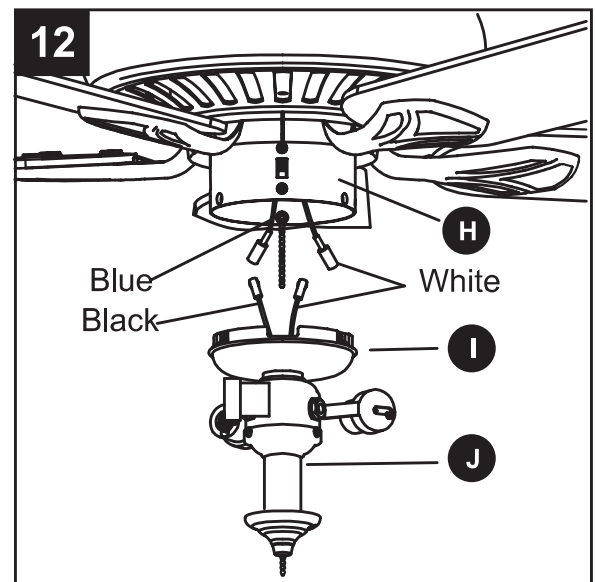
## FINAL INSTALLATION

11. Insert the black and white wires from the light kit (J) through the center hole in the switch housing cover (I). Hold wires taut while installing switch housing cover (I) to prevent the wire from twisting. Tighten the light kit (J) onto the switch housing cover (I). Install the hex nut removed in Step 10.

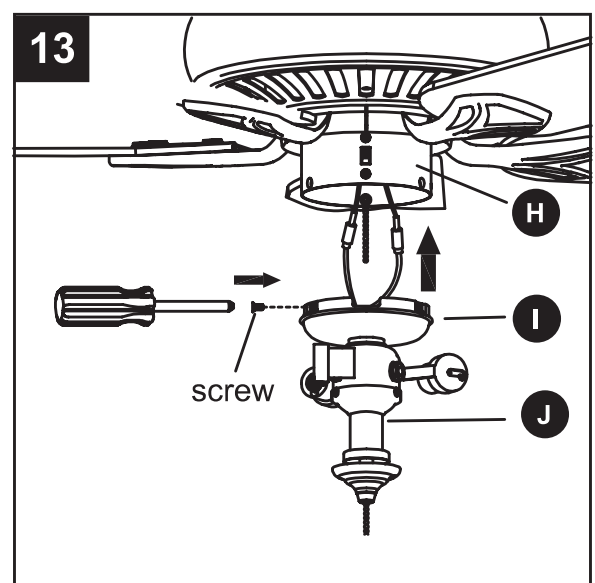


12. Connect the white wire from the light kit (J) to the white wire from the switch housing (H). Connect the black wire from the light kit (J) to the blue wire from the switch housing (H). Make sure the wire connectors are secure.

**Warning:** To avoid possible fire or shock, the connectors should not be removed unless a light kit will be immediately installed and power should be turned off prior to the removal of the light kit.



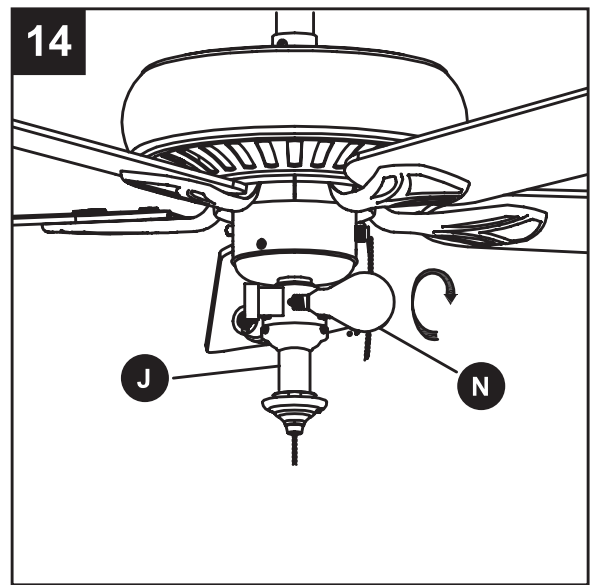
13. Attach the switch housing cover (I) to the switch housing (H). Align holes in switch housing cover (I) with holes on outer edge of the switch housing (H). (Note: The wide gap in the edge of the switch housing cover (I) should align with reverse switch on the switch housing (H).) Re-insert screws and secure all screws.



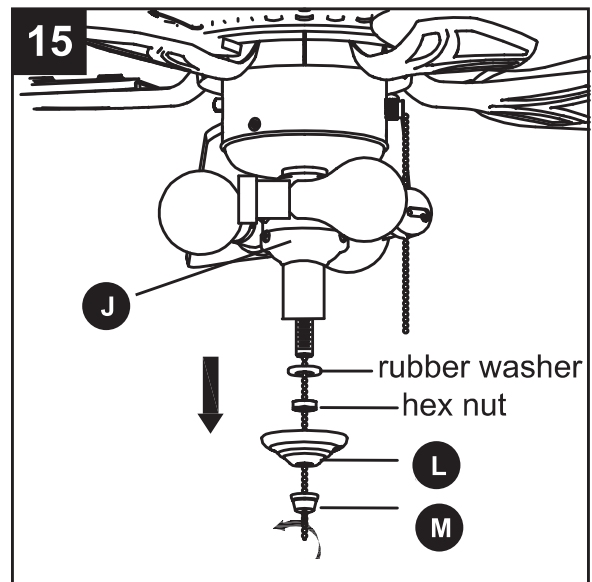


## FINAL INSTALLATION

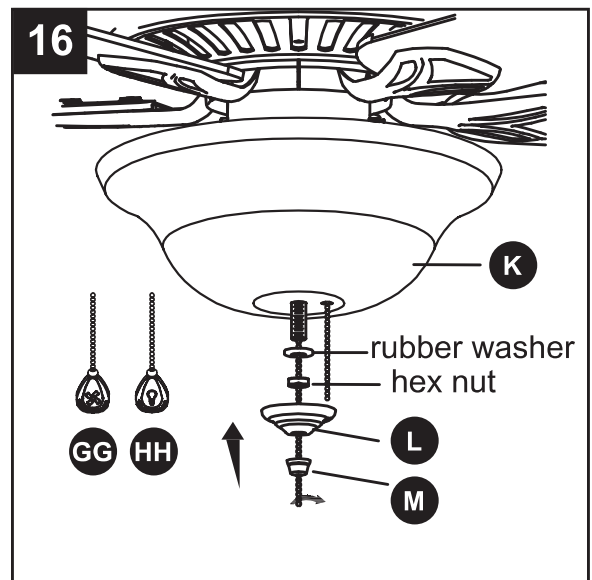
14. Install bulbs (N) into sockets. Note: This fan has an energy-saving wattage limiter included. If you replace the bulbs with over 190 watts, the light will automatically turn off. Please ensure the bulb wattage is always below 190 watts.



15. Remove the rubber washer, hex nut, bowl cap (L) and finial (M) from the light kit (J).



16. Place glass bowl (K) on pipe until flush against metal disk. Thread the fan pull chain through the side hole of the glass bowl (K) making sure pull chain hangs clear and is not tangled in the light kit (J) socket. Thread light kit pull chain through the center hole of the glass bowl (K). Place rubber washer and hex nut removed in Step 15 onto the pipe and tighten securely. Pass the fan pull chain through the side hole of the bowl cap (L). Then place the bowl cap (L) and finial (M) over the pipe and tighten securely. Attach the fan pull chain extension (GG) and light kit pull chain extension (HH).



### Hardware Used

|    |                            |     |
|----|----------------------------|-----|
|    | Fan pull chain extension   | x 1 |
| GG |                            |     |
|    | Light pull chain extension | x 1 |
| HH |                            |     |



## OPERATION INSTRUCTIONS

---

### 1. PULL CHAIN:

- (1). The fan pull chain is for motor speed control: High, Medium, Low and Off. Pull the chain once for each position.
- (2). The light pull chain controls the light fixture either ON or OFF with each pull the chain.

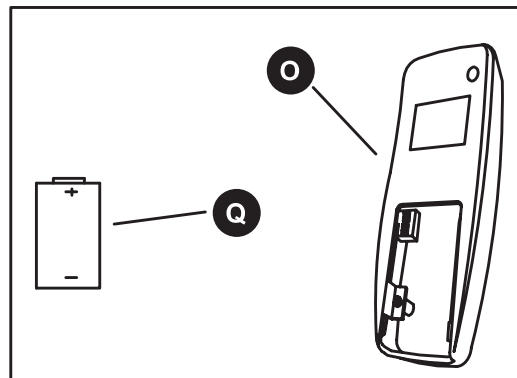
### 2. REMOTE CONTROL

**NOTE:** Before using the remote control, make sure the fan is set to the highest speed by pulling the chain, and the light is set to “ON” position by pulling the chain.

The position of the pull chain takes priority over the remote control. For example, if the pull chain switch is in the medium speed and the remote control is on high, the fan will run at medium speed. Once you set the remote control to medium speed, the fan will then slow down accordingly.

This remote control unit is equipped with 16 code combinations to prevent possible interference from or to other remote units. The code switches on your receiver and transmitter have been pre-set at the factory. Please re-check to make sure the switches on the transmitter and the receiver are the set to the same position.

- (1) Remove the transmitter battery cover, and install 9V battery (Q) (included). Ensure plug is fully attached to the battery (Q). Replace the cover.



- (2) Fan control/Dimmer.

LOW = Low speed

MED = Medium speed

HI = High speed

OFF = Turns fan off



= Turns light on or off

For DIMMER function: Press and hold the button. Release the button when light is at desired level. **Note:** The light will dim from bright to dark on an endless loop as long as you are holding the button.

The receiver stores the light setting when the light is turned off. When the light is turned on again, it starts with the most recent setting.

## OPERATION INSTRUCTIONS

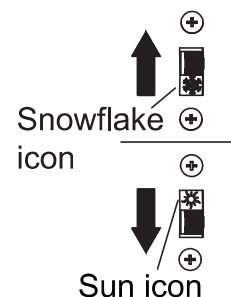
### 3. REVERSE SWITCH:

When the season changes, you may want to change to the direction your fan spins. To switch between clockwise and counterclockwise rotation, flip the fan reversal switch.

**NOTE:** Wait for fan to stop before reversing the switch.

A. In cooler weather, clockwise rotation creates an upward airflow, which moves hot air from the ceiling into the room. Push the switch UP and see a Snowflake icon.

B. In warmer weather, counterclockwise rotation creates a downward airflow, which cools the air. Push the switch DOWN and see a Sun icon.



## CARE AND MAINTENANCE

- **Important:** Shut off main power supply before beginning any maintenance. Do not use water or a damp cloth to clean the ceiling fan.
- At least twice each year, tighten all screws and lower canopy to check mounting bracket screws and downrod assembly.
- Clean fan housing with only a soft brush or lint-free cloth to avoid scratching the finish. Clean blades with a lint-free cloth. You may occasionally apply a light coat of furniture polish to wood blades for added protection.

## TROUBLESHOOTING

| PROBLEM             | POSSIBLE CAUSE  | CORRECTIVE ACTION   |
|---------------------|---|---|
| Fan does not move.  | 1. Chain switch is "off".<br>2. Fan reversal switch not engaged.<br>3. Power is off or fuse is blown.<br>4. Inconsistent location for dip switch.<br>5. Battery power is off. | 1. Pull chain switch.<br>2. Push switch firmly either way.<br>3. Turn power on or check fuse.<br>4. Turn power off. Loosen canopy, check all connections.<br>5. Set dip switch to same setting as transmitter and receiver.<br>6. Use a new battery.          |
| Noisy operation.    | 1. Blades are loose.<br>2. Cracked blade.<br>3. Unapproved speed control.   | 1. Tighten all blade screws.<br>2. Replace blades (call customer service).<br>3. Replace with an approved speed control device.   |
| Excessive wobbling. | 1. Unbalanced blades.<br>2. Blades are loose.<br>3. Blade brackets incorrectly attached.<br>4. Fan not securely mounted.<br>5. Fan too close to vaulted ceiling.              | 1. Switch with blade from opposite side.<br>2. Tighten all blade screws.<br>3. Reinstall blade brackets.<br>4. Turn off power. Carefully loosen canopy, remount securely.<br>5. Lower or move fan. Extension downrods may be ordered (call customer service). |

## WARRANTY

The manufacturer warrants this fan to be free from defects in workmanship and material present at time of shipment from the factory for lifetime limited from the date of purchase. This warranty applies only to the original purchaser. The manufacturer agrees to correct such defect at no charge or at our option replace the ceiling fan with a comparable or superior model.

To obtain warranty service, present a copy of your sales receipt as proof of purchase. All cost of removal and reinstallation are the expressed responsibility of the purchaser. Any damage to the ceiling fan by accident, misuse or improper installation, or by affixing accessories not produced by the manufacturer of the fan, are at the purchaser's own responsibility. The manufacturer assumes no responsibility whatsoever for fan installation during the lifetime limited warranty. Any service performed by an unauthorized person will render the warranty invalid.

Due to varying climatic conditions, this warranty does not cover changes in brass finish, rusting, pitting, tarnishing, corroding or peeling. Brass finish fans maintain their beauty when protected from varying weather conditions. Any glass provided with this fan is not covered by the warranty.

Any replacement of defective parts for the ceiling fan must be reported within the first year from the date of purchase. For the balance of the warranty, call our customer service department at 1-800-643-0067 for return authorization and shipping instructions so that we may repair or replace the ceiling fan. Any fan or parts returned improperly packaged is the sole responsibility of the purchaser. There is no further expressed warranty. The manufacturer disclaims any and all implied warranties.

The duration of any implied warranty which can not be disclaimed is limited to the lifetime limited period as specified in our warranty. The manufacturer shall not be liable for incidental, consequential or special damages arising at or in connection with product use or performance except as may otherwise be accorded by law. This warranty gives you specific legal rights and you also have other rights which vary from state to state. This warranty supersedes all prior warranties.

Note: A small amount of "wobble" is normal and should not be considered a defect.

## REPLACEMENT PARTS LIST

For replacement parts, call our customer service department at 1-800-643-0067, 8 a.m. - 6 p.m., EST, Monday - Thursday, 8 a.m. - 5 p.m., EST, Friday.

| PART | DESCRIPTION                | PART #                      |
|------|----------------------------|-----------------------------|
| A    | Mounting Bracket           | 102004-0047                 |
| B    | Canopy                     | 102001-0154                 |
| C    | Canopy Cover               | 102003-0001/<br>102003-0002 |
| D    | 4.5 in. Downrod Assembly   | 102200-0118                 |
| E    | Blade Bracket              | 104000-0243                 |
| F    | Blade                      | 108002-2016                 |
| H    | Switch housing             | 105003-0112                 |
| I    | Switch Housing Cover       | 105500-0043                 |
| J    | Light Kit                  | 105000-0382                 |
| K    | Glass Bowl                 | 991300-0371                 |
| GG   | Fan pull chain extention   | 990537-0031                 |
| HH   | Light pull chain extention | 990537-0032                 |
| LL   | Rubber gasket              | 109006-0001                 |

