

HISENSE REFRIGERATOR



HRB171N6BSE

Counter Depth Bottom-Freezer Refrigerator

- Installed Ice maker in Freezer
- Fingerprint-Resistant Door Panel
- Counter Depth Design
- Bright LED Lighting
- ENERGY STAR® Certified
- Metal Slide Drawers
- Gallon Door Storage

KEY FEATURES

AVAILABLE COLORS



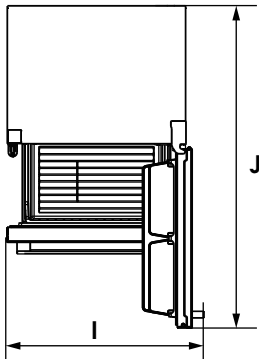
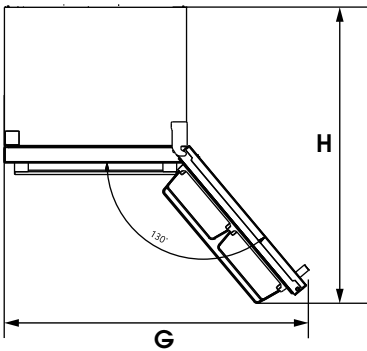
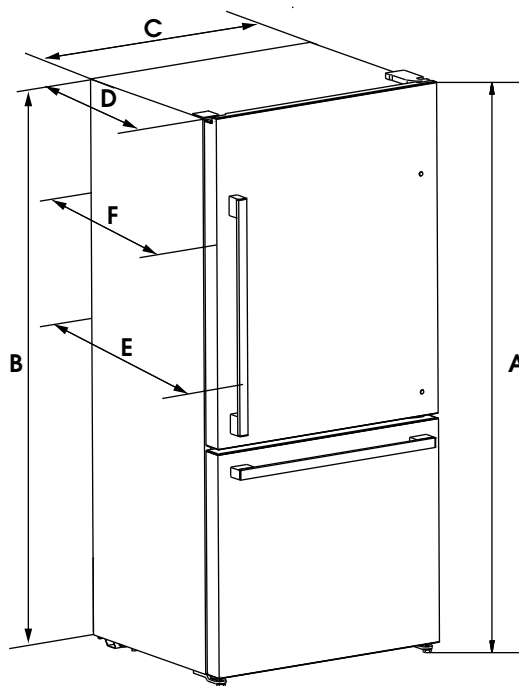
Fingerprint-Resistant Stainless Steel



TECHNICAL SPECIFICATIONS

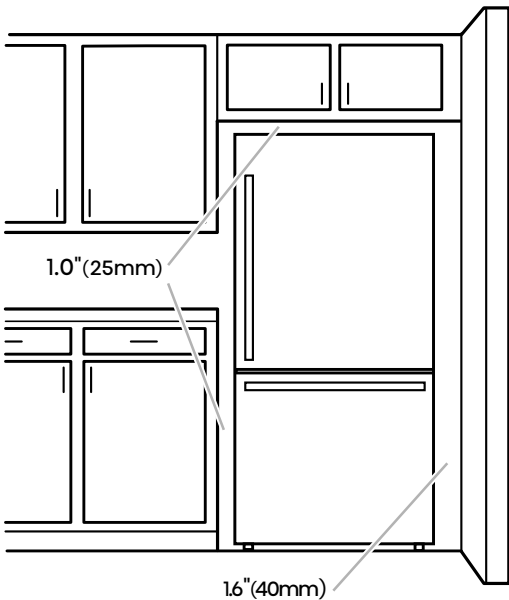
| PERFORMANCE | | REFRIGERATOR | | INSTALLATION DIMENSION | |
|-------------------------------|-----------------------------------|----------------------------|----------------------|---|---------------------------|
| Refrigerator (cu. ft.) | 12.1 | Product Type | Bottom Mount | Product (W x H x D) | 31.1*69.1*26.6" |
| Freezer (cu. ft.) | 5.1 | Temperature Range (°F) | 34°F~44°F | Width (Excluding Door) | 31.1" |
| Total Capacity (cu. ft.) | 17.2 | Door Type | Side Swing | Width (Including Door) | 31.1" |
| ENERGY STAR® Certified | Yes | No. of Shelves | 3 Adjustable Glass | Common Width | 33.0" |
| Energy Consumption (kWh/Year) | 537 | Shelf Construction | Tempered Glass | Width (Door Open 90° Excluding Handle) | 32.1" |
| Safety Listing | UL Safety Listing | Shelf Trim | Chrome Décor | Width (Door Open 90° Including Handle) | 34.6" |
| ICE & WATER SYSTEM | | No. of Crisper Drawers | 1 Full-Width | Width (Door Fully Open Excluding Handle) | 52.0" |
| Ice and Water Dispenser Type | Ice Only | LED Lighting | Yes (Ceiling LED) | Depth (Excluding Handles) | 26.6" |
| Ice Maker | Single in Refrigerator | No. of Door Bins | 5 (1 Gallon, 4 Half) | Depth (Including Handles) | 29.1" |
| Ice Type | Cubed | Door Bin Construction | 1 Piece (Clear) | Depth (Less Door) | 23.6" |
| Daily Ice Production | 3.0 lbs | FREEZER | | Depth (to Hinge Cover) | 21.7" |
| Ice Storage Capacity | 4.8 lbs | Temperature Range (°F) | -11°F~7°F | Depth (Door Open 90°) | 56.3" |
| Removable Ice Bin | Yes | Door Type | Pull-Out Drawer | Depth Type | Counter Depth |
| Water Filtration | None | Drawers | 2-Tier Organization | Height (to Top of Hinge) | 69.1" |
| Water Inlet Pressure | 207~700kPa | Drawer Divider | None | Height (to Top of Door) | 69.1" |
| COOLING SYSTEM | | LED Lighting | None | Height (to Top of Case) | 68.5" |
| Temperature Sensors | 2 | MATERIALS AND FINISHES | | Installation Clearance | Sides 1", Top 1", Back 2" |
| Compressor Type | Fixed-Frequency | Fingerprint-Resistant Door | Yes | Carton (W x H x D) | 33.0*71.6*28.6" |
| Refrigerant (Type and Volume) | R600a/1.76oz(50g) | Door Style | Flat | Weight (Unit/ Carton) | 195lbs./ 214lbs. |
| Multi Air Flow Cooling | Yes | Door Texture | Smooth | UNLIMITED WARRANTY | |
| Evaporator | 1 | Handle Type | Grip | Warranty | 2-year limited |
| CONVENIENCE | | Hidden Hinges | Yes | Parts & Labor | 2 Years |
| Display Type | Internal/ Smooth Touch / Blue LED | Toe Grille | No | Sealed System (Parts & Labor) | 5 Years |
| Temperature Controls | Electronic/ Digital | Reversible Door | Yes | Accessories | 90 Days for Parts |
| Door Alarm | Yes | Cabinet Color | Grey | UPC CODES | |
| Auto Closing Door Hinge | Yes | Inner Liner Color | White | HRB171N6BSE (Fingerprint-Resistant Stainless Steel) | 819130028989 |
| Leveling Legs | Yes | | | | |
| Demo Mode | Yes | | | | |
| Gallon Door Storage | Yes | | | | |
| Noise Level (dB) | 41 | | | | |

HISENSE REFRIGERATOR



| Model | Capacity | Height-Overall "A" | Height-Top of Cabinet "B" | Width-Cabinet "C" | Depth-with Cabinet "D" | Depth-with Door "E" | Depth-with Handle "F" | Width-Doors Open 130° "G" | Depth-Doors Open 130° "H" | Width-Doors Open 90° "I" | Depth-Doors Open 90° "J" |
|-------------|------------|--------------------|---------------------------|-------------------|------------------------|---------------------|-----------------------|---------------------------|---------------------------|--------------------------|--------------------------|
| HRB17IN6ASE | 17.2 cu.ft | 69.1" (1756mm) | 68.5" (1740mm) | 31.1" (790mm) | 23.6" (600mm) | 26.6" (675.5mm) | 29.1" (740mm) | 52" (1321mm) | 50.6" (1286mm) | 34.6" (879mm) | 56.3" (1430mm) |
| HRB17IN6AWE | 17.2 cu.ft | 69.1" (1756mm) | 68.5" (1740mm) | 31.1" (790mm) | 23.6" (600mm) | 26.6" (675.5mm) | 29.1" (740mm) | 52" (1321mm) | 50.6" (1286mm) | 34.6" (879mm) | 56.3" (1430mm) |
| HRB17IN6ABE | 17.2 cu.ft | 69.1" (1756mm) | 68.5" (1740mm) | 31.1" (790mm) | 23.6" (600mm) | 26.6" (675.5mm) | 29.1" (740mm) | 52" (1321mm) | 50.6" (1286mm) | 34.6" (879mm) | 56.3" (1430mm) |
| HRB17IN6BSE | 17.2 cu.ft | 69.1" (1756mm) | 68.5" (1740mm) | 31.1" (790mm) | 23.6" (600mm) | 26.6" (675.5mm) | 29.1" (740mm) | 52" (1321mm) | 50.6" (1286mm) | 34.6" (879mm) | 56.3" (1430mm) |

LOCATION REQUIREMENTS



To ensure proper ventilation for your refrigerator, allow for a 1.0" (25mm) space on each side and at the top.
Allow at least 2.0" (51mm) between back of cabinet and the wall.
If your refrigerator has an ice maker, allow extra space at the back for the water line connections.

If you are installing your refrigerator next to a fixed wall, leave 1.6" (40mm) minimum on the hinge side (some models require more) to allow for the door to swing open.

NOTE: This refrigerator is intended for use in a location where the temperature ranges from a minimum of 55F(13°C) to a maximum of 110°F(43°C).