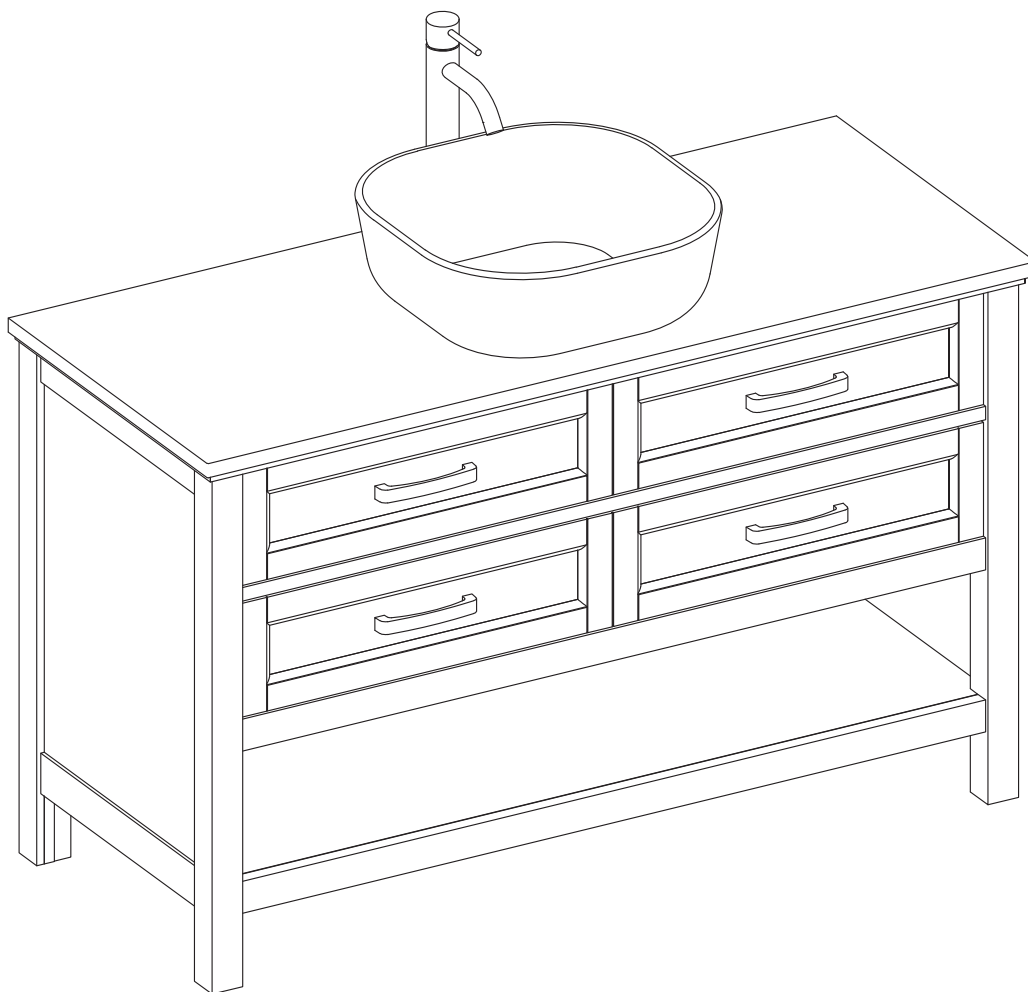


welcoming • sophisticated • inspiring



VANITY WITH VESSEL SINK AND FAUCET

MODEL #1211VA-48-242

ATTACH YOUR RECEIPT HERE

Serial Number _____ **Purchase Date** _____

Questions, problems, missing parts? Before returning to your retailer, call our customer service department at 1-866-439-9800, 8 a.m. - 8 p.m., EST, Monday - Sunday.

TABLE OF CONTENTS

Package Contents.....3

Hardware Contents.....3

Safety Information.3

Preparation4

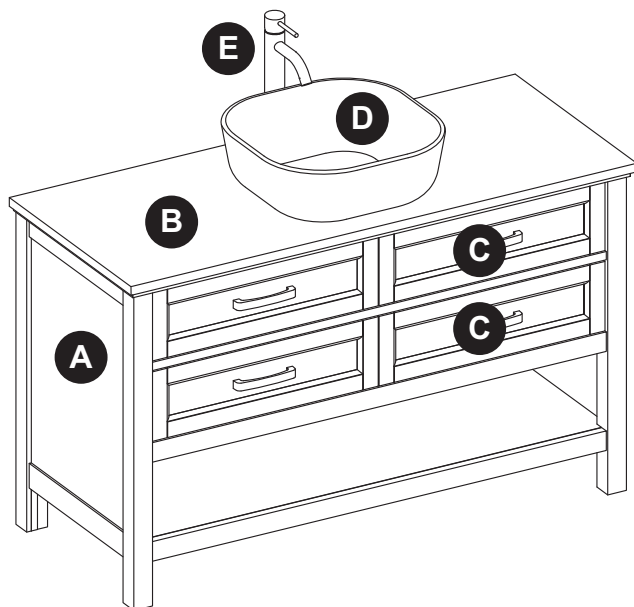
Assembly or Installation Instructions4

Care and Maintenance8

Warranty8

Replacement Parts List 9

PACKAGE CONTENTS



PART	DESCRIPTION	QUANTITY
A	Vanity	1
B	Top	1
C	Drawer (preassembled to Vanity(A))	2
D	Sink	1
E	Faucet and Drain Kit	1

HARDWARE CONTENTS (NOT SHOWN ACTUAL SIZE)

AA



Touch-Up Pen
Qty. 1

SAFETY INFORMATION

Please read and understand this entire manual before attempting to assemble, operate or install this product.

WARNING

- Some steps are more easily handled with two adults.
- Assembly and unpacking requires two adults.

CAUTION

- Use care when assembling the vanity; take your time and follow the assembly instructions closely.

KEEP THESE INSTRUCTIONS FOR FUTURE REFERENCE.

PREPARATION

Before beginning assembly of product, make sure all parts are present. Compare parts with package contents list and hardware contents list. If any part is missing or damaged, do not attempt to assemble the product.

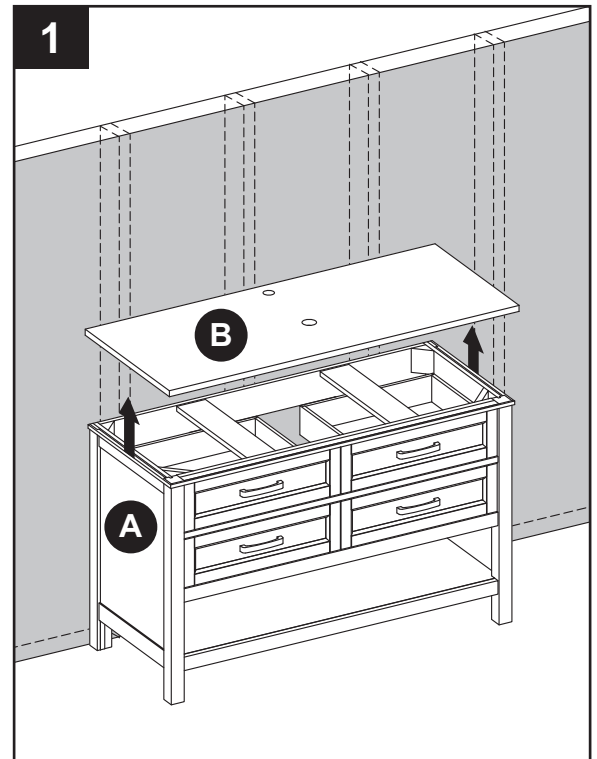
Estimated Installation Time: 20-30 minutes (24 hours for silicone caulk to dry).

Tools Required for Installation (not included): Phillips screwdriver, utility knife or scissors, silicone caulk, power drill with drill bit

Helpful Tools (not included): Measuring tape, level

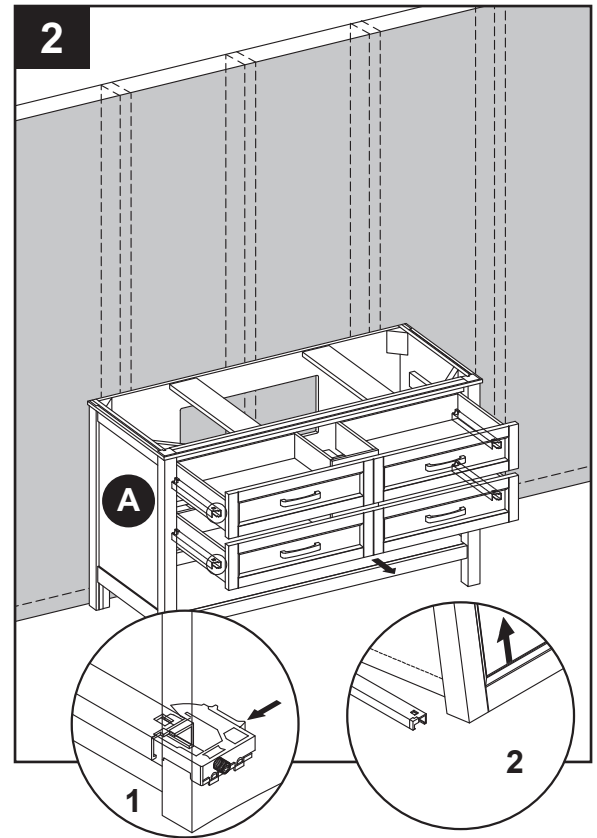
INSTALLATION INSTRUCTIONS

1. Please remove the Top (B) from the Vanity (A).
Place the Top (B) face down onto a scratch-free surface.



INSTALLATION INSTRUCTIONS

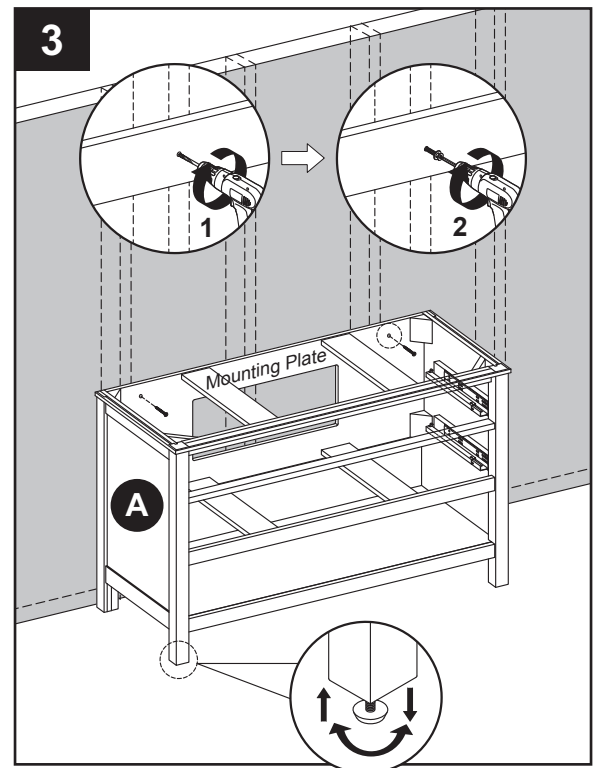
2. To remove drawers from vanity base (A), fully extend drawers and locate the plastic levers on left and right sides of the metal glide tracks. Push the plastic levers, on both sides, at the same time. This will disengage the drawer box from the glides. Gently lift up on the drawer to remove it from the glide tracks. Set aside as these will be re-installed.



Note: Clean area where the vanity (A) will be permanently located prior to beginning installation, ensuring the vanity (A) will not interfere with any water supply and drain lines once mounted.

Note: Use preassembled levelers on legs of vanity (A) to level the item. Twisting the levelers counterclockwise will increase the height of vanity (A), twisting them clockwise will decrease it.

3. With the help of another adult, carefully place vanity (A) against the wall in its final location. From inside vanity (A), drill hole through vanity mounting area and into wall studs. Using mounting hardware (not included) appropriate for your installation site, secure vanity (A) to wall stud. If possible, secure vanity (A) to two wall studs for increased stability.

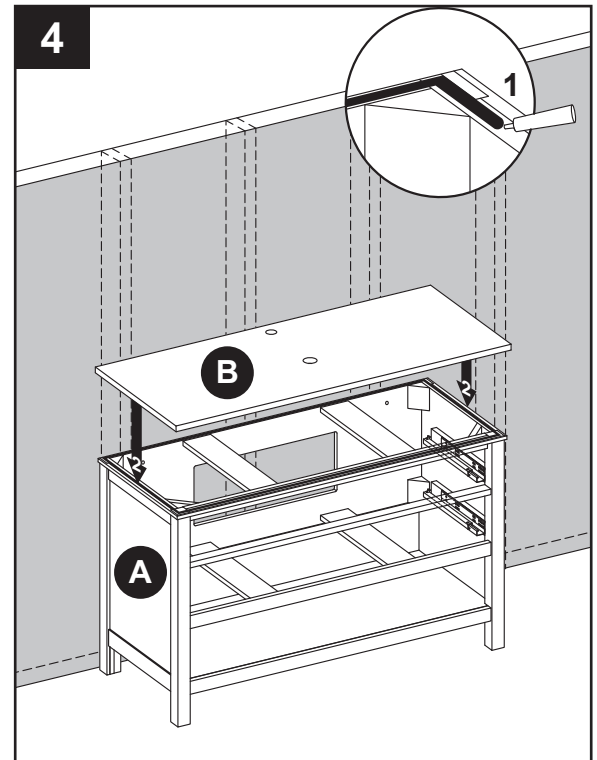


WARNING

Vanity (A) **MUST** be secured to wall.

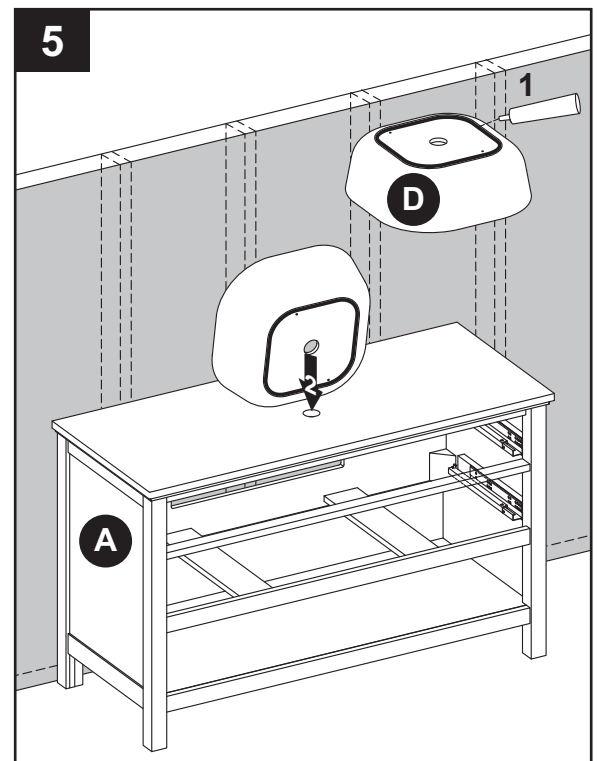
INSTALLATION INSTRUCTIONS

4. Apply silicone caulk (not included) to the top edge of vanity (A). With the help of another adult, gently lower top (B) onto the vanity (A). Wipe away any excess caulk with a soft cloth, and wait approximately 24 hours for it to dry.



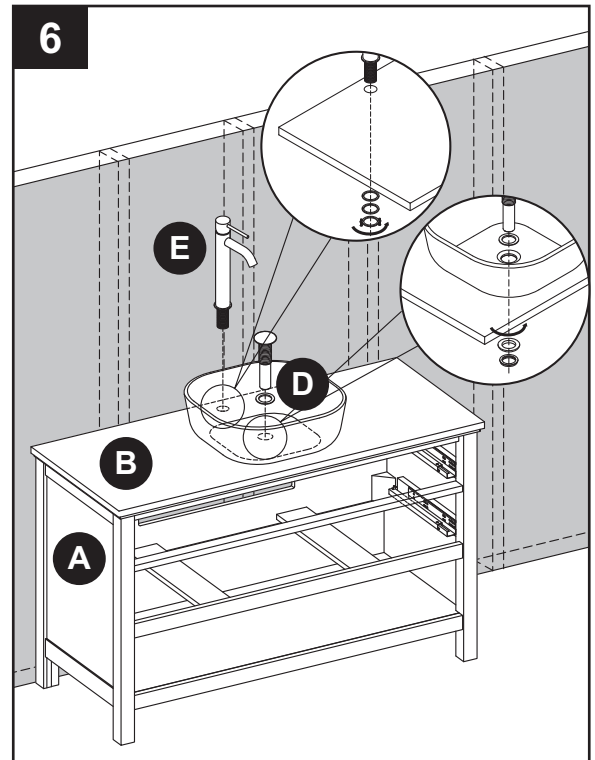
5. Clean bottom surface of sink (D). Following silicone sealant's manufacturer directions, apply a uniform bead of silicone sealant (not included) around bottom outer ring of sink (D). Lower sink (D) onto vanity top. Align sink's bottom drain hole with inner hole of vanity top.

Note: Make sure sink (D) is completely dry before applying sealant.



INSTALLATION INSTRUCTIONS

6. Following manufacturer's enclosed assembly instructions, install faucet and drain kit (E) to vanity (A).

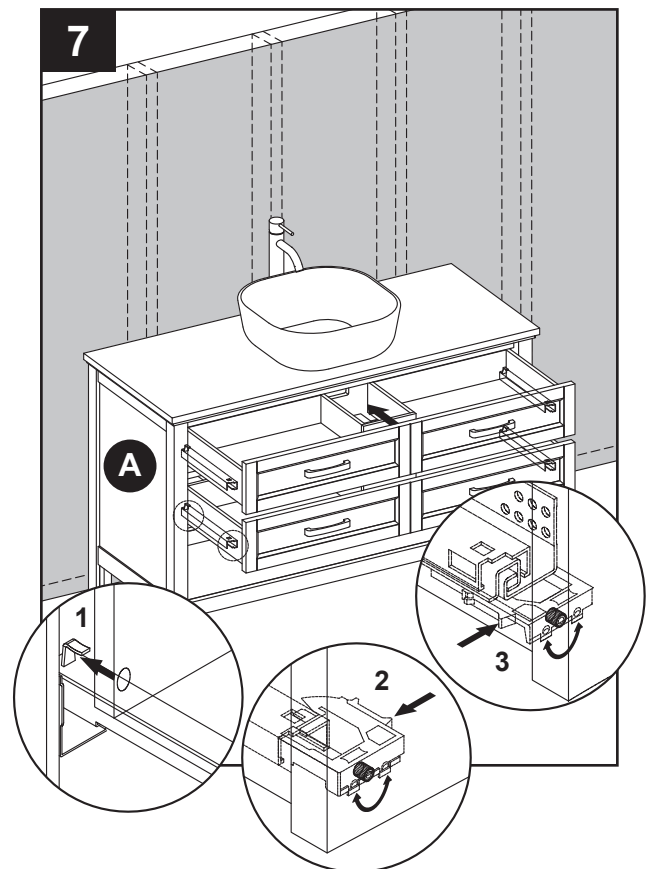


7. To reinstall drawer into vanity (A), fully extend metal glide tracks. Gently lower and slide drawer box into rear glide catch. Next, lower drawer box down to completely rest on extended glides. Then, push plastic levers to lock the drawer box in place.

Note: To adjust the drawer box height, spin the adjustment wheel to the left to raise the drawer box or spin the adjustment wheel to the right to lower the drawer box. You can adjust the left and right side glide heights independently in order to find the drawers best alignment position.

CAUTION

DO NOT force drawer or damage to glide may occur. If drawer does not slide in with ease, remove and try again from the start.



CARE AND MAINTENANCE

- Do not clean the sink with detergents, acids, abrasives or other harsh cleaners as they will dull the finish.
- Dust the vanity regularly with a soft, non-lint producing cloth or household dusting product.
- You can clean the vanity with a gentle, non-abrasive household cleaner.
- Make sure to dry the wood immediately with a soft cloth or towel.
- Tips for using touch-up pen (AA): For scratches, stroke in direction of scratch; for worn areas, stroke in direction of wood grain. Rub off excess colorant promptly with a soft cloth.

IMPORTANT

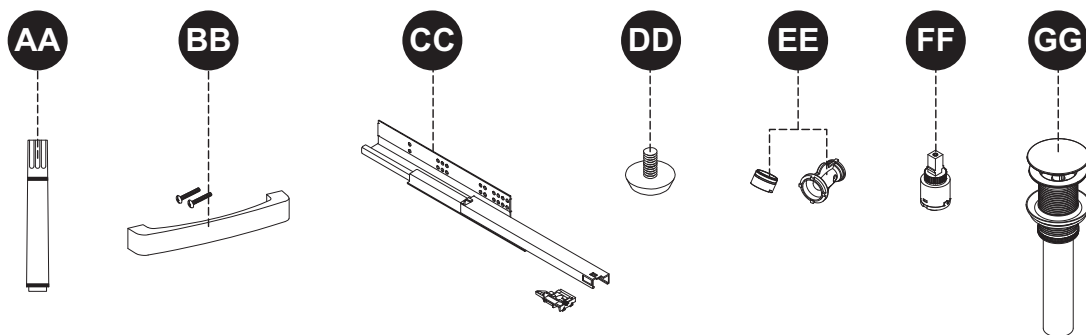
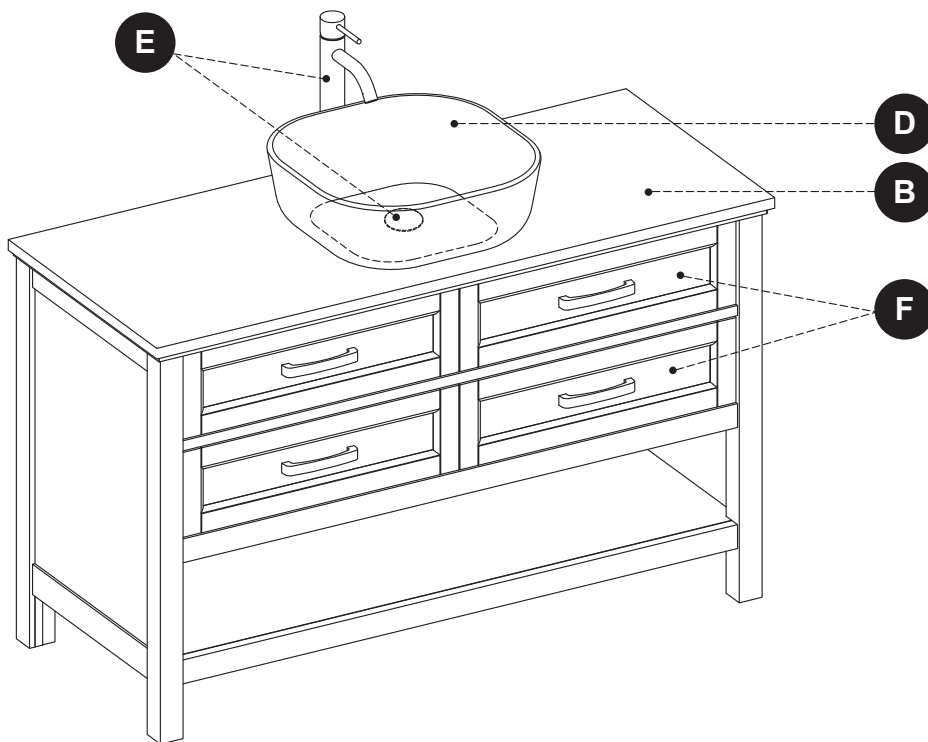
- Shade variations and patterns are an inherent characteristic of stone (e.g. granite, marble, engineered stone). Stone tops will vary from product to product. Use caution placing items such as soap or any fragranced material on the stone surface. Use a soap dish, coaster or similar item to protect the surface if placing any soap or fragranced products on the stone.
- If soap or fragranced products come in contact with the stone top, rinse the surface with water and dry using a soft non-abrasive cloth.
- **WARNING:** Must use cleaning agents safe for stone. Check your cleaning agents use restrictions before using on any stone. Damage to the stone may result. Vanity manufacturer not responsible for damage caused by improper cleaning agents or soaps used. Warranty will not cover damage caused by the use of improper soaps or cleaning agents.
- **DO NOT** use products to clean the stone top that contain acetone, lemon, vinegar or other acids as these may cause damage to the stone surface.
- Periodically reseal the stone top using an appropriate stone sealer available from your local home store. Follow the manufacturer's directions on how to apply.

WARRANTY

The manufacturer warrants this item against defects in materials and workmanship for a period of one (1) year from the date of original retail purchase. This warranty applies only to the original purchaser. This warranty does not apply to any damage on the product by accident, misuse, or modified, improper installation or by affixing accessories not produced by the manufacturer. The manufacturer is not accountable whatsoever for product installation during the warranty period. There is no further expressed warranty. The manufacturer shall not be legally responsible for incidental, consequential or special damages arising at or in connection with product use or performance except as may otherwise be accorded by law. The manufacturer disclaims any and all implied warranties.

REPLACEMENT PARTS LIST

For replacement parts, call our customer service department at 1-866-439-9800, 8 a.m. - 8 p.m., EST, Monday - Sunday.



PART	DESCRIPTION	PART #
B	Top	PH-1211VA-48-TOP
D	Sink	CF-1211
E	Faucet And Drain Kit	FS6A0194NP
F	Drawer Front	PH-1211VA-48-242-DRAWER FRONT
AA	Touch-up Pen	OF-0120R
BB	Drawer Handle	PH-1211-BN
CC	Drawer Glide Set	PU-14X3-HANDLE
DD	Leveler	T-1007
EE	Aerator With Removal Key	1211- AERATOR WITH KEY
FF	Cartridge	1211-CARTRIDGE
GG	Drain Assembly	1211-DRAIN