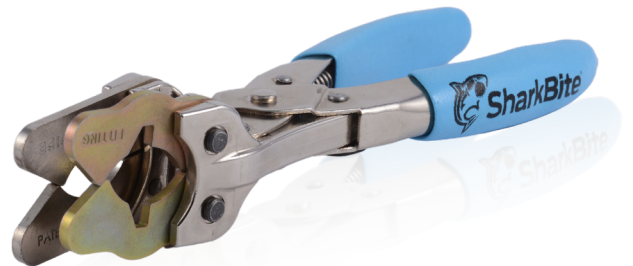


SharkBite Pro Disconnect Tool

One tool for removing SharkBite fittings sizes 3/8" – 1". No interchangeable jaws, faceplates, or screws to install or lose.

Features and Benefits

- Removes 3/8" - 1" PEX, Copper, CPVC, PE-RT and HDPE pipe from SharkBite Brass Push-to-Connect Fittings.
- Removes 1/2" and 3/4" PVC from SharkBite Brass PVC Push-to-Connect Fittings.
- All metal construction.
- One-handed operation.
- Heavy-duty handle with springs for mechanical advantage.
- Made in the USA.
- Patent Pending.



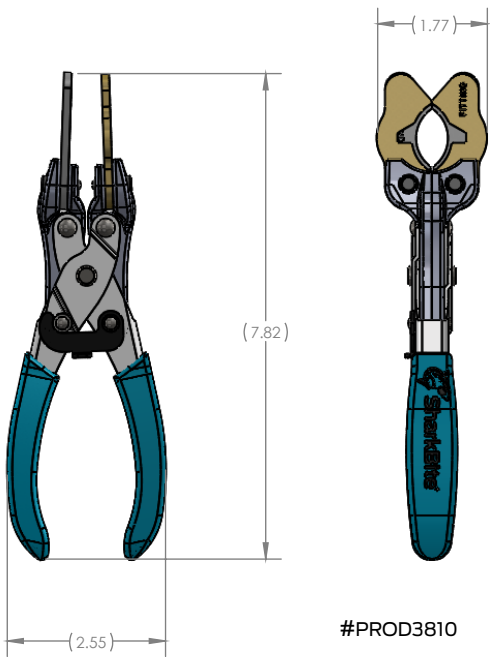
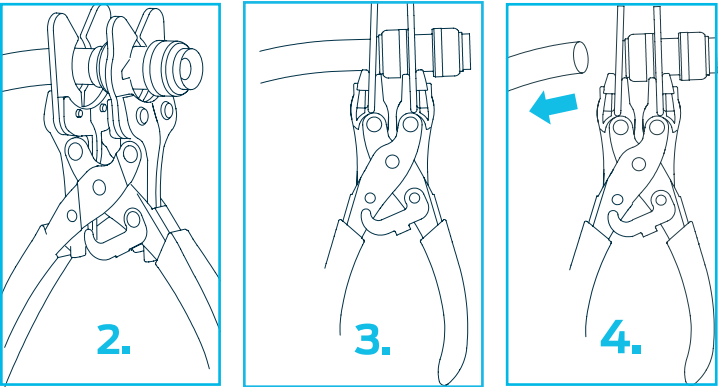
#PROD3810

Specification Data

Materials		
1	Rivets	Steel
2	Spring	Steel
3	Grips	Vinyl
4	Handle	Steel
5	Finger	Copper
6	Latch	Zinc

Installation Requirements

1. Shut off the water before removal of SharkBite Fitting.
2. Slide the ear marked "Fitting" onto the fitting and the ear marked "Pipe" over the pipe and against the disconnect ring.
3. Squeeze the handles to press the disconnecting ring into the fitting. Hold the handles together.
4. Twist and pull the pipe to remove it.
5. If re-using the pipe or fitting inspect surfaces to be sure there are no scratches or marks that may become leak paths.



#PROD3810

Dimensions	
Description	Part #
Removal tool 3/8 in. - 1 in.	PROD3810

