

WIRE CONNECTION DIAGRAM

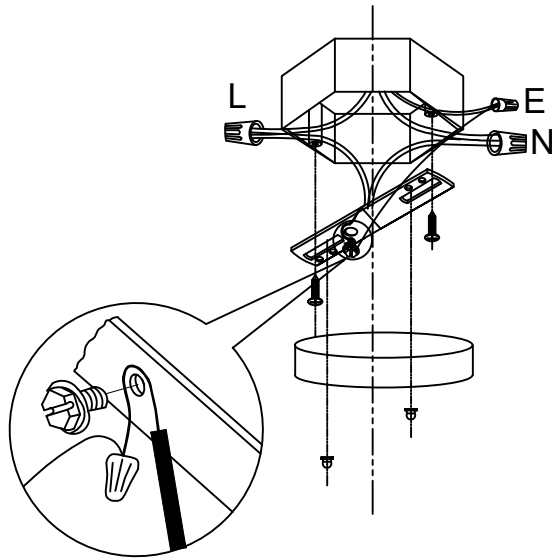
Wires met safety standards are recommended to connect the supply circuit.

CAUTION: Risk of fire

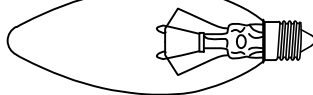


CANOPY INSTALLATION INSTRUCTIONS

Please read all instructions carefully. Before you proceed to install, make sure that the power supply is turned off and remains off until installation is complete.



Light Bulb (Not
included)



E12

Chandelier Installation Instructions

Manufacturer Part Number: E003

Customer Service Number: (832) 478-8866

Customer Service Email: WeCareWeFix@gmail.com

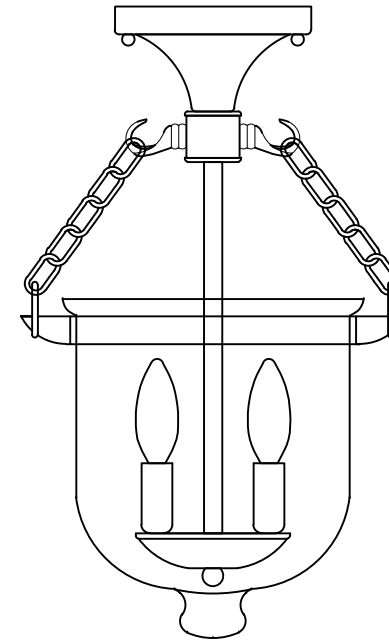
Please include your name, contact methods, product name, and model number in the email.

IMPORTANT SAFETY INSTRUCTIONS:

Please read through all the instructions carefully and completely before beginning assembly and installation.

This product must be installed in accordance with installation instructions and all safety and building codes. It is strongly suggested that all direct wired fixtures be installed by a licensed electrician.

Be sure the electricity to the wires you are working on is shut off; either the fuse is removed or the circuit breaker is turned off. Turning the power off using the light switch is not sufficient to prevent electrical shock.



(Rated 110-120V/60Hz, bulb E12/60W maximum)

CALIFORNIA PROPOSITION 65 WARNING

WARNING: This product contains chemicals known to the State of California to cause cancer and birth defects or other reproductive harm. (California law requires this warning to be given to customers in the State of California.)

For more information: www.P65Warnings.ca.gov

ASSEMBLING, INSTALLATION AND MOUNTING

Step 2

2a: Lock the crossbar to the junction box of the ceiling by using 2 pcs of 5/32 screws in the accessories bag.

2b: Connect the wires. The hot/positive (+) wire is the one which has writing on it. The negative (-) wire is the one which has no writing.

Step 3

There are 2 screws and 2 nuts in the plastic bag. Hang the lamp to the ceiling by attaching the screws to the nuts.

Step 1

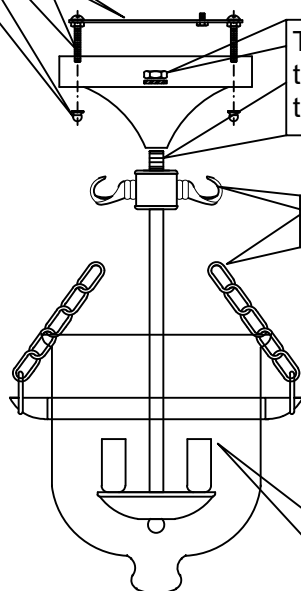
The nipple needs to pass through the ceiling plate. Attach the nipple to the nut.

Step 4

Attach the chain to the hook

Step 5

Install 3 E12 bulbs
(Not included).



PART LIST AND ASSEMBLY ILLUSTRATION

Note: Some parts may be pre-installed or pre-assembled.

