



## FEATURES

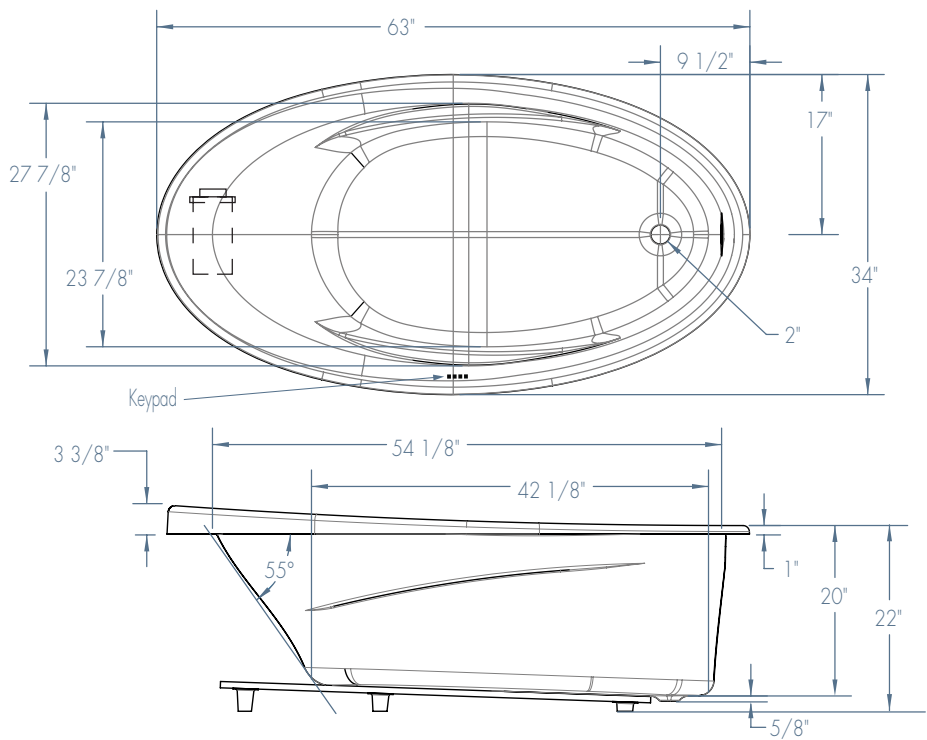
- Deep, Ergonomic Bathing Well
- Sculpted Armrests
- Raised Backrest
- Pre-Leveled Support Base
- Slip Resistant Floor
- Premium Cast Acrylic Surface
- Limited Lifetime Warranty
- Reversible Drain
- High Gloss Durable Acrylic
- Made in USA

## AVAILABLE SYSTEMS

---

### DRIFTBATH ONLY

- Up to 70 water portals
- Quiet, energy-efficient .75 hp pump with integrated heat-transfer
- Electronic control
- 4 high-intensity LED Chromatherapy
- Available in White or Biscuit
- Dozens of low-profile, water only portals for a one of a kind hydrotherapy experience



## AFTON 6334

63" x 34" x 22"

Note: Drop-in models feature a pre-leveled support base.

### FEATURES

Dimensional Tolerance  $\pm 3/8"$ . Dimensions needed for site preparation should be measured from the unit. Manufacturer assumes no responsibility for preparatory work.

Type & Model #	Material	System	Powered By	Heater	Controls	Drain	Pkg. Wt.
DriftBath #6334ADB	Cast Acrylic	Water Circulation	Pump	Integrated	Electronic	Universal	191 lbs

### DIMENSIONS

Width	Depth	Height	Skirt Height
63"	34"	22"	—

### SUMP DATA

Capacity to Overflow	Min. Operating Capacity	Top	Bottom	Top	Bottom
Standard: 63	—	54 1/8"	42 1/8"	27 7/8"	23 7/8"

WIDTH @ centerline      DEPTH @ centerline

### PLUMBING DIMENSIONS

A	B	Drain Diameter / Clearance
1 3/4"	9 1/2"	2" - 1 5/8"

### ELECTRICAL DATA

Component	Specification	Requirement
Pump (DriftBath)	3/4 HP; 8.8 AMP; 120V	20 AMP; 120V, separate circuit; Class A GFCI

#### Notes:

- 1) Where applicable, utilize cut-out templates packed with unit for deck cutouts.
- 2) 16 x 16 minimum access required at pump/blower location(s).