

IMPORTANT INFORMATION

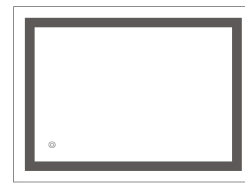
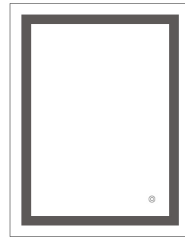
To avoid the risk of electrocution,
please turn OFF the electricity supply mains
before commencing the installation.

Do not stand the mirror upright on hard
surfaces whilst fitting as this will damage the edge.
Keep the plastic corner protectors on
until installation is fully completed.



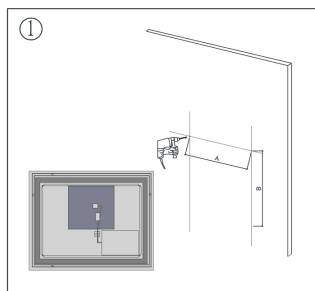
Tips:

The mirror can be Horizontally Mounted
or Vertically Mounted.

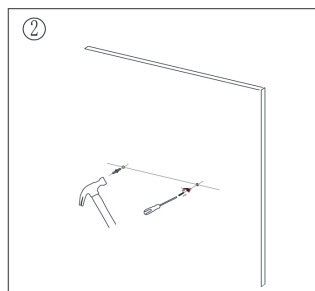


1. Installation

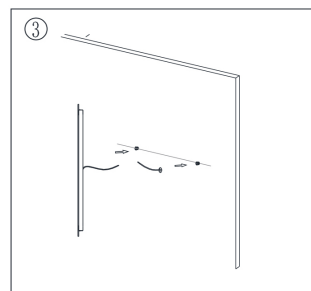
Note: Keep the plastic corner protectors on until installation is fully completed.



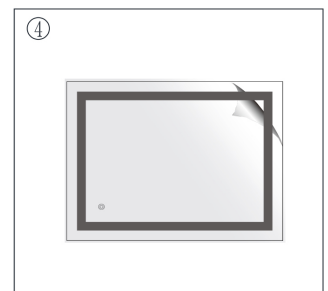
Measure the distance of the mounting
hole, Drill holes with a suitable sized
drill.



Insert the anchor and mounting screw
into the wall.



Connect the mirror wires with your main
wires and hang the mounting hole to
the screw on the wall.



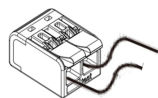
Peel off the protective film and clean the
mirror with a soft cloth.

2. Power Connection Instruction

Before you start the installation, please ensure that:

- the wall where the product is being installed is able to support the weight of the product
- the main electrical supply has been powered off to complete installation

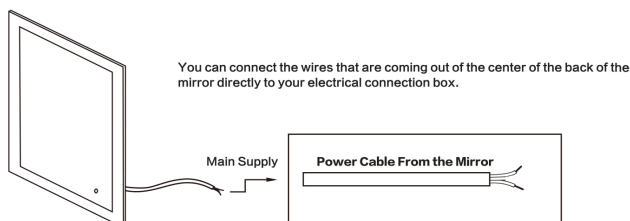
The terminal connection method: A power cord on
the wall is connected to a power cord on the
mirror. There are 2 terminals in total.



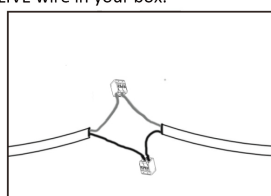
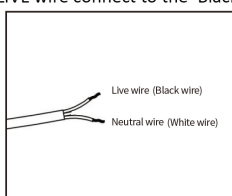
There are two wiring methods:

1. Connect the wire of the mirror to the wire of the wall switch.

- (1) You would see there 2 wires with 2 colors--white and black.
- (2) Safely connect these 2 wires one by one to the wires of the wall switch in your home.



- White= Neutral wire connect to the White Neutral wire in your box.
- Black= LIVE wire connect to the Black LIVE wire in your box.



2. Connect the wire of the mirror to the wire of the plug and plug it into the socket

The plug has three wires,

- Green=GROUND wire connect to the middle wire of the plug.
- White=White wire connecting the plug wire to the neutral wire
- Black=the black wire connecting the live wire to the plug

Operation

Lights and defogging will be automatically turned on
when the power is turned on.

Lighting Color Adjust



1. Short touch the power button to turn the light ON/OFF.
Short touch again to choose the light(natural light/warm yellow/white light).
2. Long touch the power button to dim the currently selected light.
3. When the switch is turned off, the defogging function will also be turned off. In addition, the defogging function will also turn off automatically after one hour in order to save electricity. If you want to re-open this function, you can re-touch the switch.