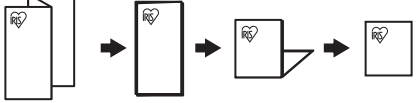


■CODE: 877271 ㊤取説USAアスラISSR480
■サイズ: 630 x H297mm (六折り)
■材 質: 上質紙70kg
■刷 色: 1C/1C(Black)



[新規] : 2021.06.02

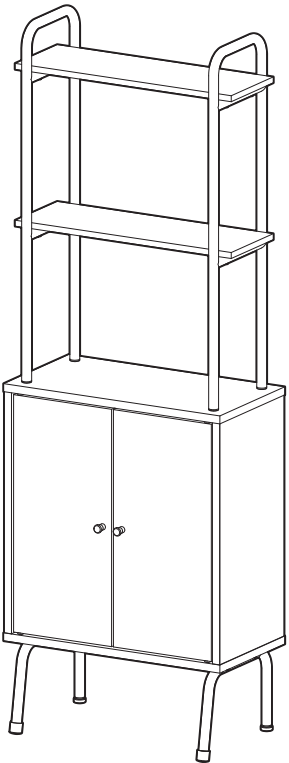


INDUSTRIAL SERIES STORAGE RACK

GENERAL INSTRUCTIONS

ISSR - 480

Thank you for purchasing this product.
Read these instructions carefully before use.
Keep these instructions for future reference.



ASSEMBLING WITH 2 PEOPLE IS RECOMMENDED

Tool Required

- Cross-head Screwdriver



WARNING

Do not use an impact driver.

PRODUCT SIZE (in/mm)	W18.90 x D10.63 x H55.28 in / W480 x D270 x H1404 mm
WEIGHT CAPACITY (lbs/kg)	Desktop: 22 lbs / 10 kg, Display Shelf: 4 lbs / 2 kg (per 1), Movable Shelf Board: 11 lbs / 5 kg (per 1) , Bottom Board: 22 lbs / 10 kg, Overall: 74 lbs / 34 kg
MATERIAL	Wooden parts: Printed paper cosmetic particle board, Medium Density Fiberboard Pipe: Steel (epoxy powder coating)

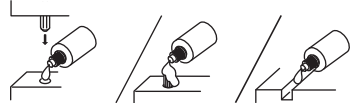
*WEIGHT CAPACITY IS MEASURED VALUE, NOT GUARANTEED VALUE.

*PRODUCT SPECIFICATIONS ARE SUBJECT TO CHANGE WITHOUT NOTICE.

IMPORTANT

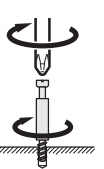
- READ ALL INSTRUCTIONS PRIOR TO ASSEMBLY.
- FOLLOW ASSEMBLY INSTRUCTIONS PROPERLY TO ENSURE MAXIMUM PRODUCT STRENGTH AND STABILITY.

1 Gluing dowel and slot



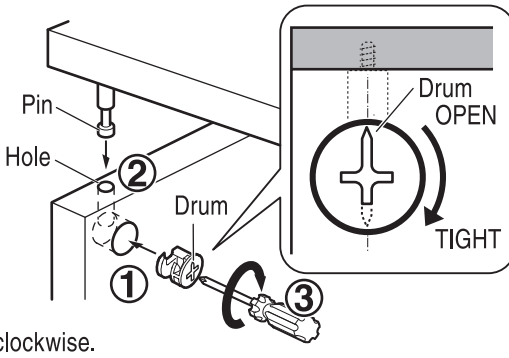
2 Tightening Pin

Screw clockwise using a Phillips screwdriver

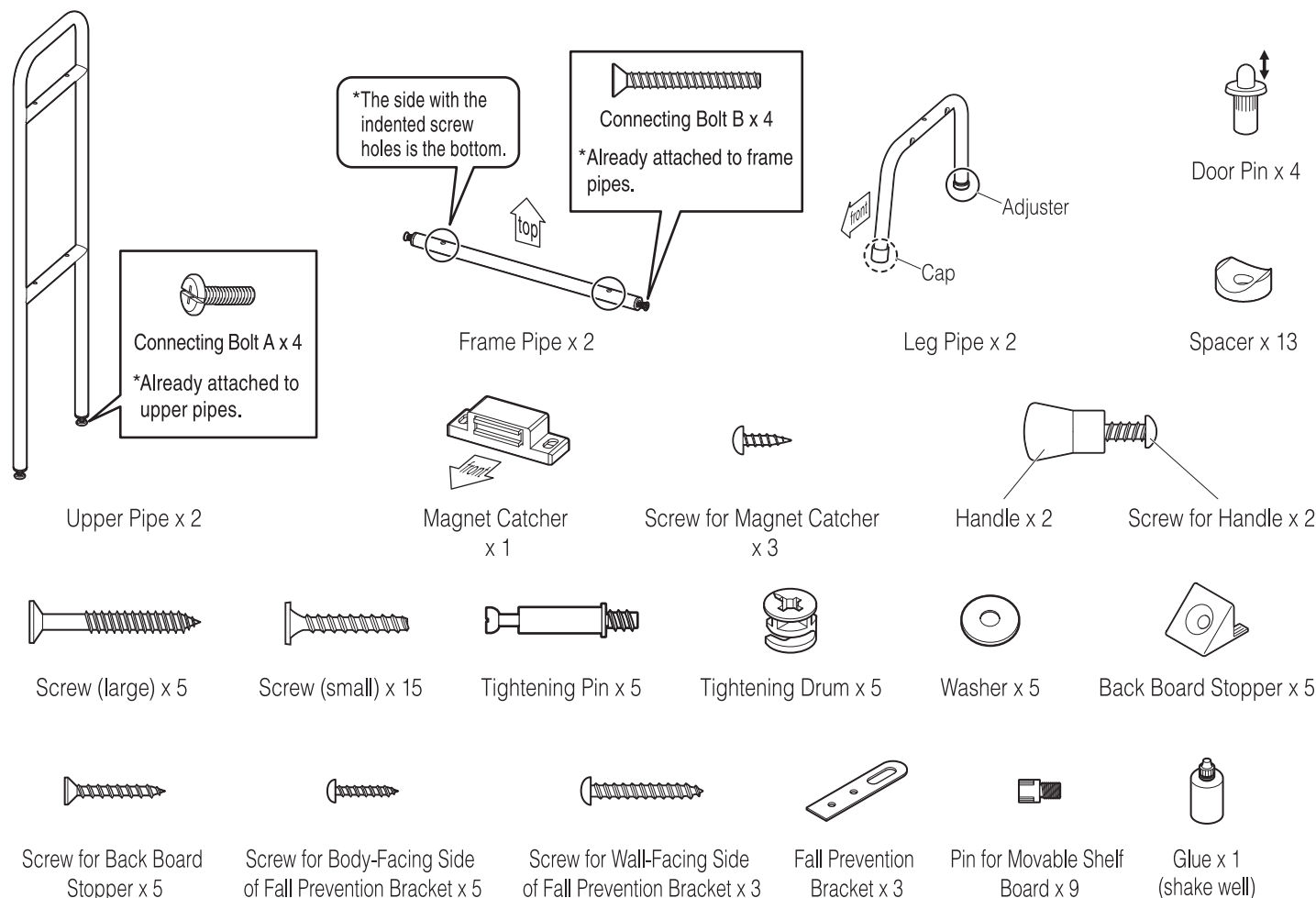
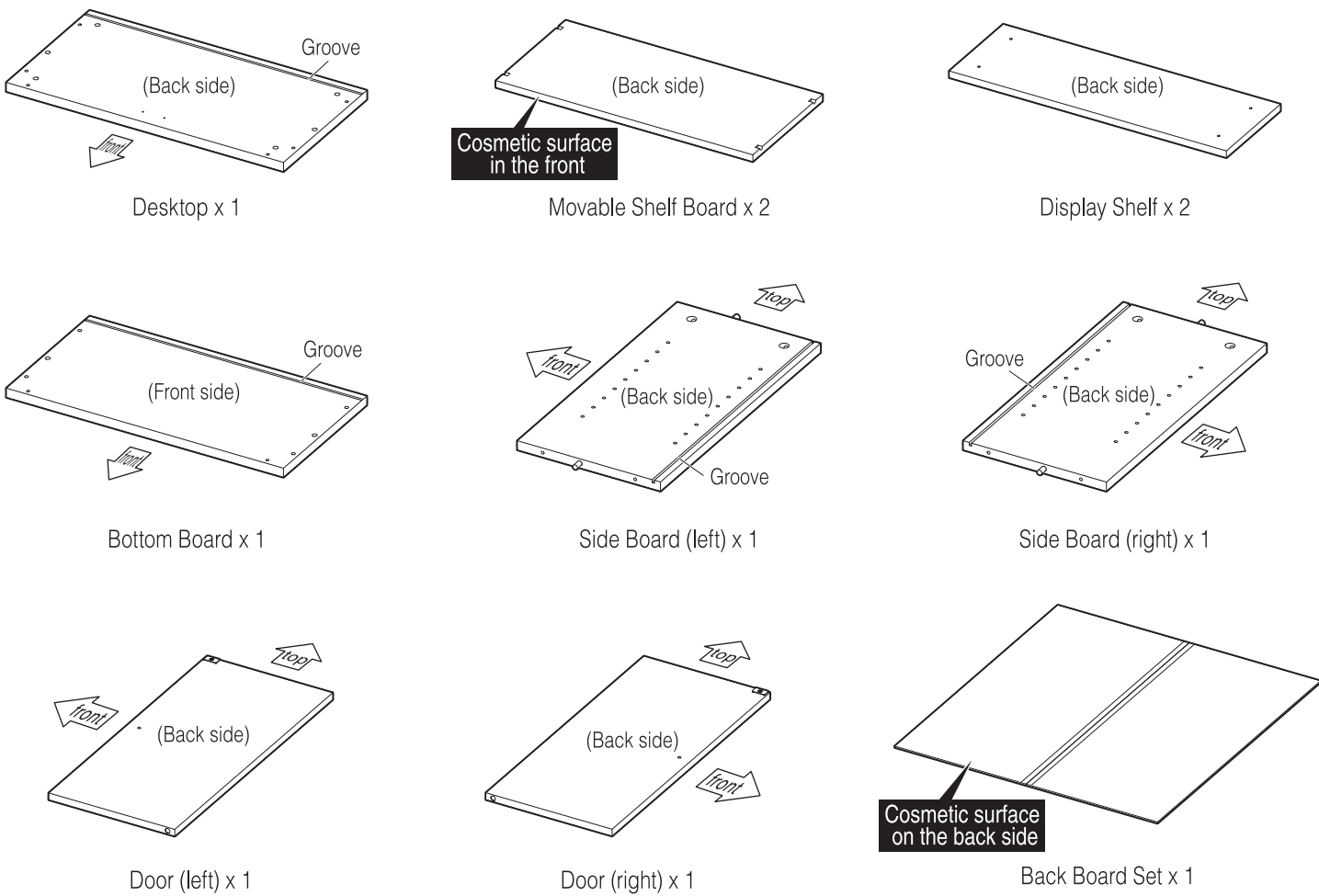


3 Tightening Drum

- 1 Insert tightening drum:
Being careful of orientation, insert the drum to the back with etched arrow at top.
(Drum cannot be secured if oriented incorrectly)
- 2 Insert tightening pin into hole
- 3 Turn tightening drum:
Secure by turning 135-180 degrees clockwise.

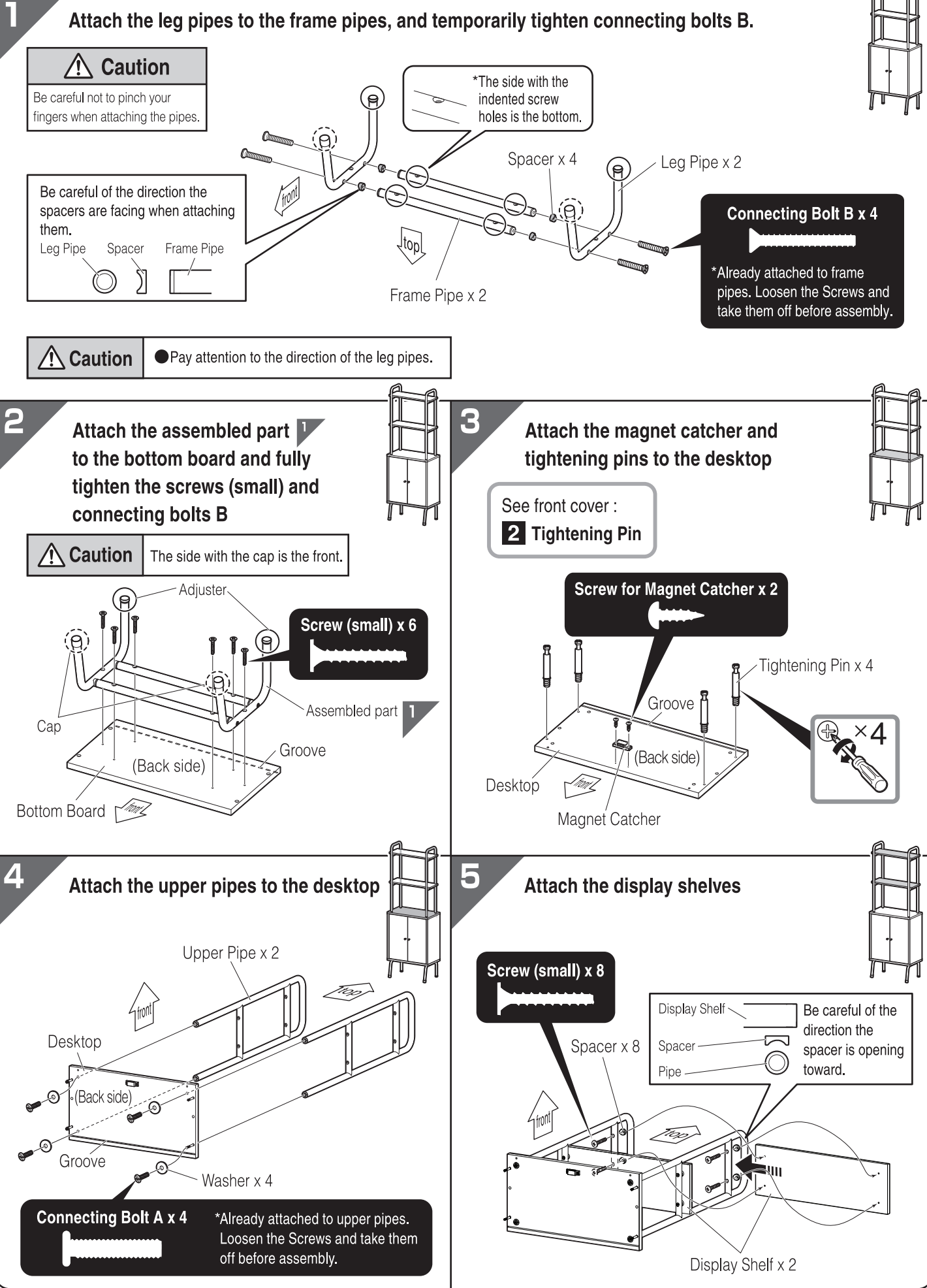


INCLUDED PARTS



ASSEMBLY METHOD

- ASSEMBLE INDOORS ON A FLAT SURFACE, BE WARY OF SCRATCHES ON FLOOR FROM ASSEMBLY.
- VERIFY THAT ALL PARTS ARE PROPERLY INSTALLED.



ASSEMBLY METHOD (Continued)

6 Attach the side boards (left and right) to assembled part 2

See front cover :
1 Gluing dowel and slot

Side Board (left) (Back side) Groove (Front side) Groove Side Board (right) Groove

Screw (large) x 4

Caution Pay close attention and make sure to line the grooves up with the grooves on the bottom board.

7 Attach the back board set

Cosmetic surface on the inside

Back Board Set

8 Attach assembled part 5

See front cover :
3 Tightening Drum

Assembled part 5

Tightening Drum x 4

9 Attach the doors (left and right)

How to attach the doors
Insert the door pins into the holes in the bottom board and desktop, while pushing onto them.

Push Door Pin

*Although the magnet catcher is slightly unaligned with the magnet catcher receiver, this is not a problem as it was done in order to adjust the magnetic force.

Screw for Handle x 2

Handle x 2

Door (left) Door (right)

Door Pin x 4

10 Attach the movable shelf boards

Movable Shelf Board x 2
*Movable shelves can be attached at any position.

Cosmetic surface in the front

Pin for Movable Shelf Board x 8

WARNING
*If the floor is not level, rotate the adjusters at the bottom of the leg pipes to stop them from wobbling.

Leg Pipe Adjuster

Unscrew Tighten

11 Attach the back board stoppers (4 points) and fall prevention brackets to complete assembly

Step 1
Screw for Back Board Stopper x 4

Step 2
How to attach the fall prevention brackets

1 Fall Prevention Bracket x 2
Screw for Body-Facing Side of Fall Prevention Bracket x 4

2 Screw for Wall-Facing Side of Fall Prevention Bracket x 2

Attach the back board stoppers while pushing onto the side boards.

WARNING
· Make sure the bolts and screws have been thoroughly tightened
· Make sure product is straight and sturdy
· All adjusters and leg pipes should be touching the floor without any wobbling

PRECAUTIONS

FOR SAFE USAGE, OBSERVE THE FOLLOWING:

FOR INDOOR STORAGE USE ONLY

- Do not place product near a heater or any other source of heat/fire.
- Keep product on a flat and stable surface.
- Do not allow children to play with product.
- Do not exceed the weight capacity.
- Do not place things that exceed the weight tolerance on or inside the product.
- When moving product, take all items off.
- Assemble correctly according to the assembly method in this manual.
- Use of this product on flooring or other easily damaged floor surfaces may result in scratches or dents on the floor surface, so use sufficient caution.
- When placing items on product, distribute weight evenly.
- There may be oil adhering to the pipes, so wipe it off promptly.
- When opening or closing the doors, avoid pinching your fingers.
- Do not close the doors tightly. It may cause damage.
- Keep away from direct sunlight or high humidity.
- Wipe away any water, oil, or soap immediately.
- Do not place hot or wet items on the product.
- Do not place stickers or tape on product.
- If the product becomes unbalanced or unstable, please remove some of the stored items.
- Check that screws are properly tightened after installation. Screws may loosen over time, re-tighten as needed.

- No refund will be provided for accidents or damages caused by natural disasters, improper usage, or unauthorized modifications made to the product.
- Follow the local rules and regulations when disposing of product or package materials.
- Placing product in a well-ventilated area is recommended before first use.

MAINTENANCE

TO MAINTAIN OPTIMAL PERFORMANCE OF PRODUCT, OBSERVE THE FOLLOWING:

- Do not scrub the wooden shelf surface hard while cleaning. It may damage the surface.
- To remove hard stains, wipe with soap and water using a non-abrasive cloth and dry product thoroughly.
- Do not use cleaning products such as alcohol, gasoline, bleach or detergent powder.

Attn: Customer Service (Returns Department)
IRIS USA, Inc.
13423 West Cactus Road
Surprise, AZ 85379
©2021 IRIS USA, Inc. All rights reserved.