



LIMITED LIFETIME WARRANTY

Compass Manufacturing International warrants to the original consumer purchaser that the faucet be free from defects in material and workmanship for as long as the original consumer purchaser owns the home in which the faucet was first installed.

In the event that Freendo Faucets are used in a Commercial Application, this warranty is limited for a period of 5 years, unless otherwise specifically stated in the catalog and/or price book.

Compass Manufacturing International will replace, free of charge, during the applicable warranty period, any part or finish that proves defective in material and/or workmanship under normal installation, use and service. This warranty shall not apply to goods which have been subject to accidents, negligence or improper installation. Compass Manufacturing International will not be liable for other damages or losses, including, but not limited to: labor charges and/or damages incurred in installation, repair or replacement as well as any other kind of loss or damage. Proof of purchase from the original consumer purchaser must be made available for all warranty claims.

Compass Manufacturing International recommends using a professional plumber for all installation and repair. Compass Manufacturing International will, at its discretion, provide new or equivalent replacement parts for any product that proves to be defective under normal usage and service. Replacement parts may be obtained by emailing the address below, calling the number below or by writing to:

Compass Manufacturing International

Freendo Product Service

6702 Enterprise Drive

Louisville, KY 40214

800.626.3525

warranty@cmiproduct.com

Revised 06/28/19

warranty@cmiproduct.com

© Compass Manufacturing International

800.626.3525



Model No. : 201-6608 Polished Chrome
201-6609 Brushed Nickel *Spotless PVD*
201-6610 Oil-Rubbed Bronze



**Majestic Two Handle Bathroom Faucet
With Pop-up**
3 Hole Installation, 4" Center-Set



Helpful Information

Helpful Tools

Tools:

Gather the necessary tools as shown below to complete the installation of this faucet. Some may not be needed depending on the model of faucet you are installing.



Plumber's Putty
and/or Silicone



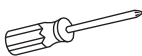
Flashlight



Basin Wrench



Safety Glasses



Screwdriver



Pliers



Channel Locks



Adjustable Wrench

Maintenance

Your new faucet is designed for years of trouble-free performance. Keep it looking new by cleaning it periodically with a soft, damp cloth. Avoid abrasive cleaners, steel wool and harsh chemicals as these will dull the finish and void your warranty.

Safety Tips

- If you use soldering for the installation of the faucet, the seats, cartridges and washers will have to be removed before using flame. Otherwise, the warranty will be void on these parts.
- Protect your eyes with safety glasses when cutting or soldering water supply line.
- Cover your drain to avoid losing parts.

Important Points

Prior to beginning installation, turn off the cold and hot water lines and turn on the old faucet to release built-up pressure. When installing your new faucet, turn the connector nuts finger tight, then use a wrench to anchor the fitting and a second wrench to tighten the nut one additional turn. Connections that are too tight can compromise the integrity of the system. Wrap all threaded connections with teflon tape. Always wrap in a clockwise direction.

5

Trouble-Shooting

If the instructions were followed carefully and the faucet does not work properly, try these corrective steps.

Problem	Cause	Action
Leaks underneath handle.	Lock nut (#4) has come loose.	Tighten the lock nut (#4).
Water will not shut off completely.	Dirty or damaged cartridge (#7 or #17).	Remove the handle (#3) and cartridge (#7 or #17) to check the ceramic disk for dirt and damage. Reinstall or replace the cartridge (#7 or #17).
Aerator leaks or has an inconsistent water flow pattern.	Aerator assembly (#36) is dirty or misfitted.	Unscrew the aerator assembly (#36) to check rubber packing or replace the aerator assembly (#36).

Have a question? DON'T GO BACK TO THE STORE, WE CAN HELP, just call 1-800-626-3525 ,8 a.m. to 5 p.m. EST Monday-Friday, or send an email to Help@cmiproduct.com.

4

Configuration

A. Faucet Shank



B. Faucet Shank



C. Faucet Shank



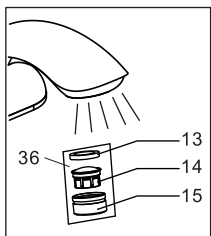
Connect to water supply lines with either:

- (A) 3/8" O.D. Copper tubing (ball nose risers with the coupling nuts or;
- (B) 3/8" Copper tubing (no ball) with supplied tube head interior connector or;
- (C) IPS faucet connectors (1/2")



Warning:

The supply valve and supply lines are not included.



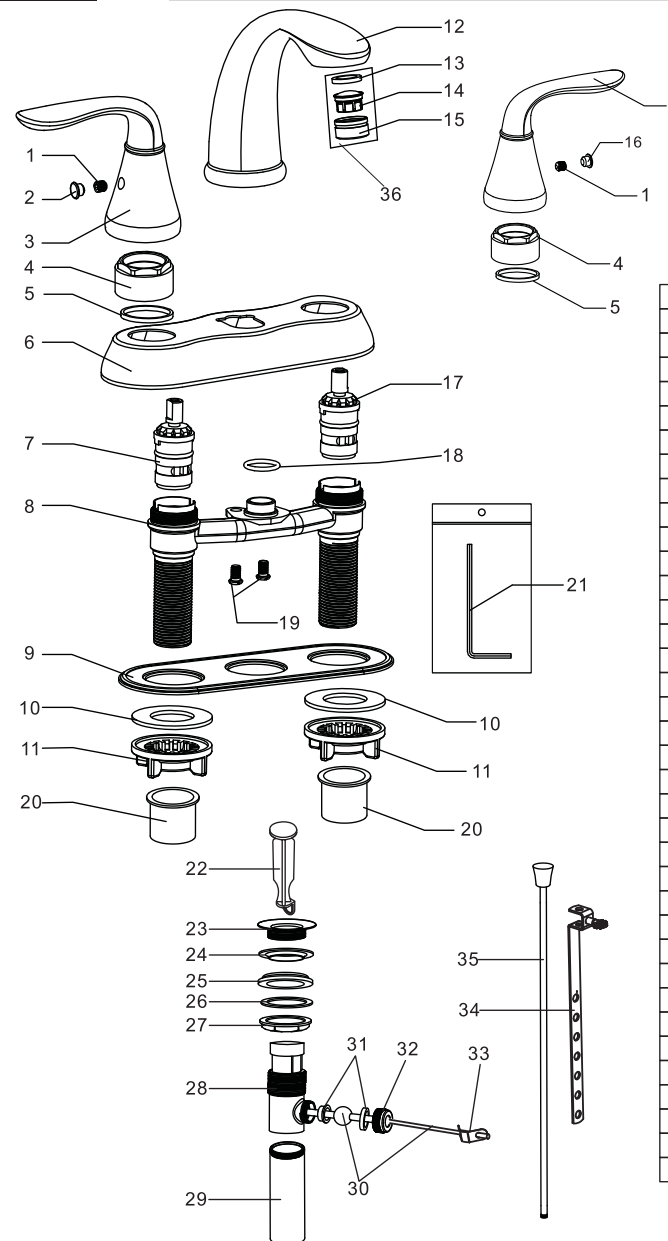
Important:

Remove the aerator assembly (#36). Turn on the hot and cold water for one minute. This will flush any debris from the lines that might clog the system. Turn off the water and re-install the aerator assembly (#36).

Test system for leaks.

1

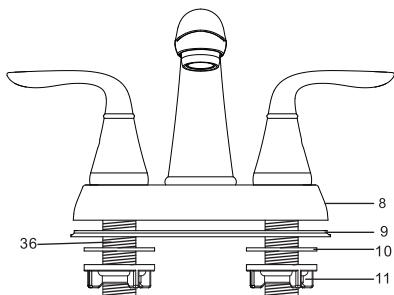
Parts Diagram / List



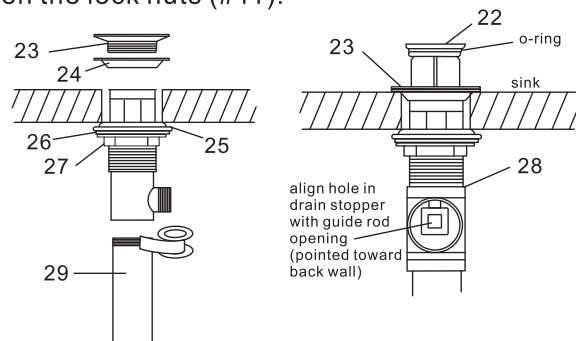
No.	Part Name
1	Set Screw
2	Index (Red)
3	Handle
4	Lock Nut
5	Washer
6	Deck Plate
7	Cartridge (Hot)
8	Brazed Underbody
9	Gasket
10	Washer
11	Lock Nut
12	Spout
13	Aerator Washer
14	Aerator Core
15	Aerator Collar
16	Index (Blue)
17	Cartridge (Cold)
18	O-ring
19	Screw
20	Protective Sleeve
21	Allen Wrench
22	Drain Stopper
23	Flange
24	Top Rubber Washer
25	Bottom Rubber Washer
26	Washer
27	Locknut
28	Drain Body
29	Tailpiece
30	Ball Rod
31	Ball Rod Gasket
32	Ball Nut
33	Spring Clip
34	Lift Rod Strap
35	Lift Rod
36	Aerator Assembly

2

Installation Instructions



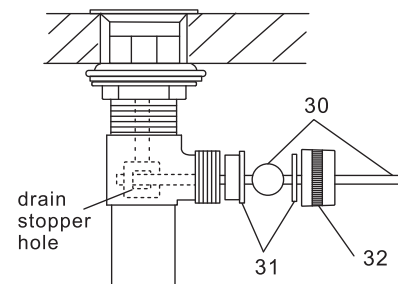
1. Shut off water supply and drain lines. Clean sink surface thoroughly. Make sure mounting area is clean and dry.
2. Remove the plastic locknut (#11) and washer (#10) from the faucet. Don't remove the gasket (#9) from faucet.
3. Position the faucet on the countertop with gasket (#9). Re-install the washers (#10) and the lock nuts (#11) on the brazed underbody (#8). Hand tighten the lock nuts (#11).



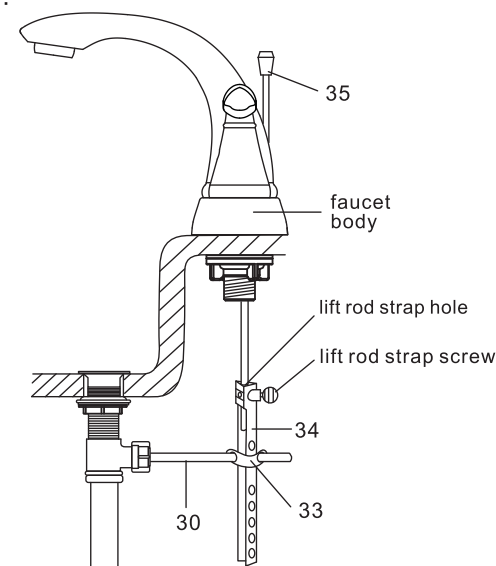
4. Disassemble the drain stopper (#22), flange (#23), and top rubber washer (#24).
5. Insert the drain body (#28) into the drain hole from under the sink. Re-install the flange (#23) and top rubber washer (#24) to the drain body (#28) and hand tighten.
6. From under the sink, install the bottom rubber washer (#25), washer (#26) and tighten the locknut (#27) until firmly against the sink base.
7. Disassemble the tailpiece (#29) from the drain body (#28) and apply teflon tape clockwise. Re-install the tailpiece (#29) to the drain body (#28).
8. Reinstall the drain stopper (#22) into the drain body (#28). Ensure o-ring is in place and align the stopper hole with the guide rod opening, as shown.

3

Installation Instructions



9. Remove ball nut (#32) and ball rod gasket (#31) from the ball rod (#30). Insert ball rod (#30) into the drain body (#28) and the hole in the drain stopper (#22). Reinstall the ball rod gasket (#31) and ball nut (#32).



10. Insert lift rod (#35) through hole on faucet body. Connect ball rod (#30) to lift rod strap (#34) using spring clip (#33) to hold and adjust.
11. Attach lift rod strap (#34) to the lift rod (#35) by inserting the lift rod (#35) through the lift rod strap (#34) hole. Adjust the lift rod (#35) to the correct height and hand tighten the lift rod strap screw.