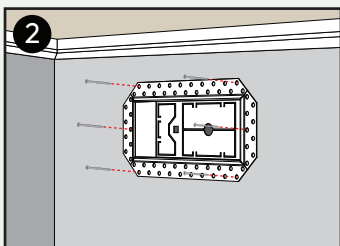
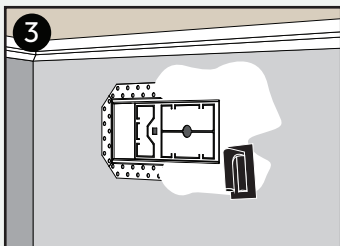


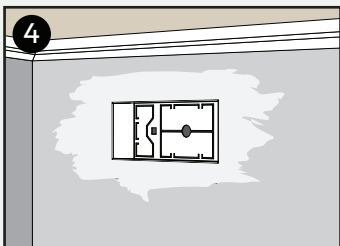
Dry-fit **Base** into duct opening.



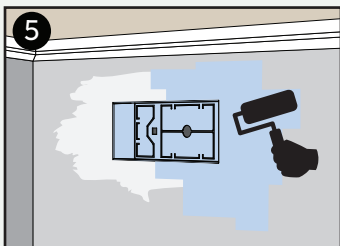
Ensure flange is flat to the wall.
Use drywall screws to fasten.



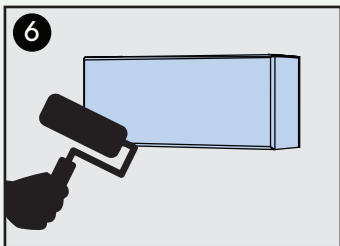
Use mud to cover flange surface.
Wait to dry.



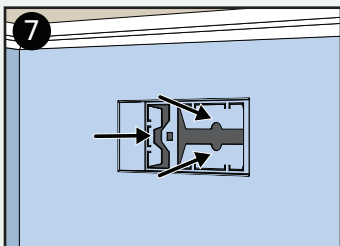
Sand mud so surface transitions smoothly. Repeat steps 3, 4 as needed.



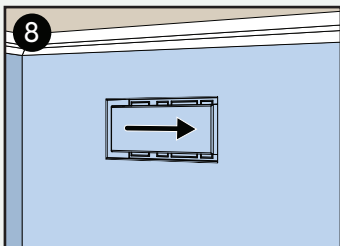
Paint **Base** to match surrounding wall surface. *If using wallpaper, do not cover **Base**.



Paint or wallpaper **Tray** to match **Base** and surrounding wall surface.



Adjust dampers to the open position.



Insert and slide **Tray** in place.
Enjoy!

Control Air Flow

Slide to remove Tray and adjust dampers open and closed. For optimal air flow, push flanges past 90°

Additional Support

support@ariavent.com / www.ariavent.com

Patent Information

www.ariavent.com/pages/patents

