



Product Submittal	
Name	
Date	
Architect/Owner	
Contractor	
Tag	
Notes	

## Compression Dual Shut-off Specification Sheet

### Description

Independently control and shut off two fixtures or appliances from one stop valve. Ideal for maintenance and repair. 1/2 in. compression inlet connection makes for quick installation and quarter-turn, full-port brass ball valves make for easy operation. Dual shut-off stop valve allows for one fixture to be controlled without affecting the other fixture or the water supply to the rest of the home.

### Features And Benefits

- Sleek chrome finish for an attractive appearance.
- Quarter turn full-port brass ball valve prevents corrosion.
- Compatible with copper pipe.
- Can be installed in wet lines.

### Specification Data

Materials	
Valve body	DZR LF brass
Knurled Handle	ABS
Valve ball	DZR LF brass
Seat	PTFE

### Temperature Performance

- Minimum working temperature 33°F
- Maximum working temperature 160°F
- Maximum working pressure is 125 psi

### Flow Rate

- 1/4" Compression 2.2 GPM at 20 psi
- 3/8" Compression 4.0 GPM at 20 psi

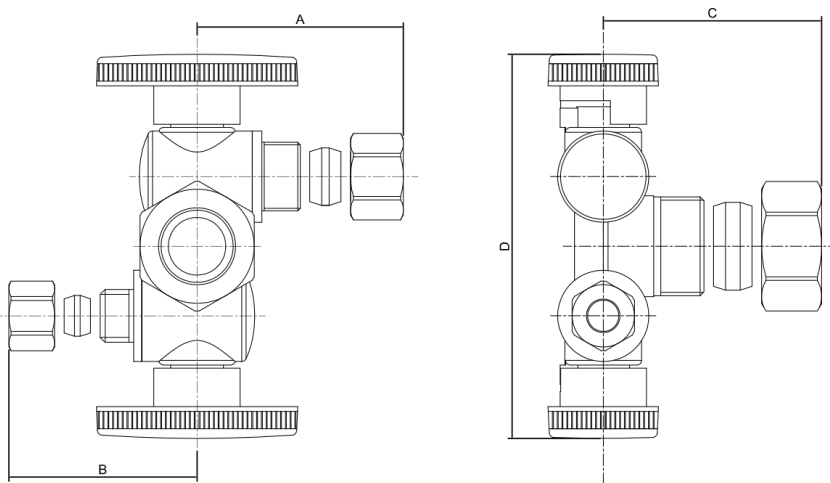


## Part Listing

<input type="checkbox"/>	COMPDS123814Z	1/2 in. Compression x 3/8 in. OD Compression x 1/4 in. OD Compression
<input type="checkbox"/>	COMPDS123838Z	1/2 in. Compression x 3/8 in. OD Compression x 3/8 in. OD Compression

## Dimensions

Part Number	DIM A (IN)	DIM B (IN)	DIM C (IN)	DIM D (IN)
COMPDS123814Z	1.14	1.02	1.16	3.15
COMPDS123838Z	1.14	1.14	1.16	3.15



## Codes and Listing

cUPC  
 ASME A112.18.1  
 CSA B125.1  
 NSF/ANSI/CAN 61  
 NSF/ANSI 372

