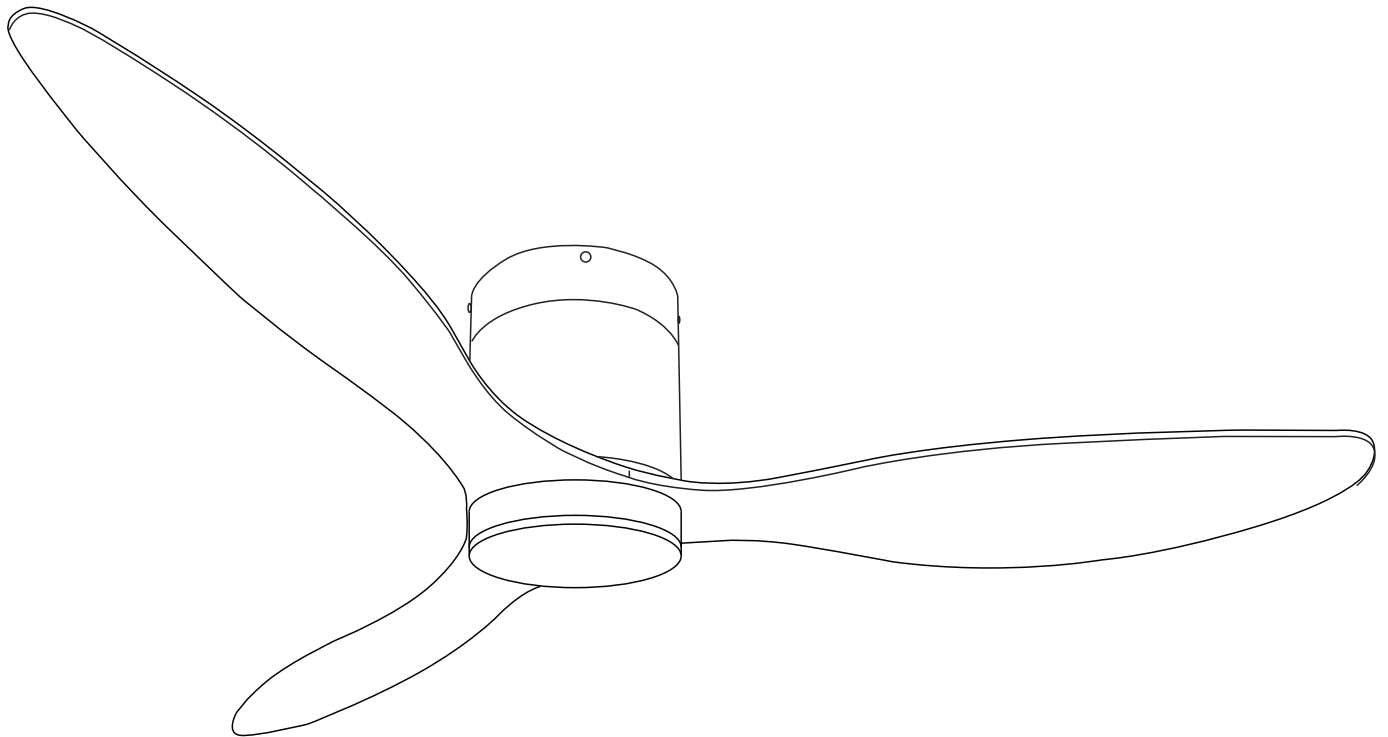


# INSTALLATION & USER MANUAL

## CEILING FAN WITH LIGHT



Customer Service: [support@ breezary.com](mailto:support@breezary.com)

# Table of Contents

Table of Contents .....	2	Exploded View .....	4
Safety Information .....	2	Installation Instructions .....	5
Dimension Reference .....	3	Troubleshooting Guide .....	12
Hardware Included .....	3		
Fan Parts Included .....	3		

## Safety Information

### READ AND SAVE THESE INSTRUCTIONS.

1. To reduce the risk of electric shock, ensure electricity has been turned off at the circuit breaker or fuse box before you begin.
2. All wiring must be in accordance with the National Electrical Code "ANSI/NFPA 70" and local electrical codes. Electrical installation should be performed by a qualified licensed electrician.
3. The outlet box and support structure must be securely mounted and capable of reliably supporting a minimum of 35 lbs (15.9 kg). Use only UL Listed outlet boxes marked "Acceptable for Fan Support of 35 lbs. (15.9 kg) or less."
4. Do not place objects in the path of the blades.
5. To clean the fixture, turn off the power, wait for it to cool, and wipe the fixture with a clean, soft cloth.
6. After making electrical connections, spliced conductors should be turned upward and pushed carefully up into the outlet box. The wires should be spread apart with the grounded conductor and the equipment-grounding conductor on one side of the outlet box and ungrounded conductor on the other side of the outlet box.
7. All setscrews must be checked and retightened where necessary before installation.



**WARNING:** To reduce the risk of electrical shock or fire, not use this fan with any solid-state fan speed control device. It will permanently damage the electronic circuitry.



**WARNING:** To reduce the risk of personal injury, do not bend the blade brackets when installing the rackets balancing the blades, or cleaning the fan. Do not insert foreign objects in between rotating fan blades.



**WARNING:** To reduce the risk of fire, electric shock or personal injury, mount to outlet box marked "acceptable for fan support of 35 lbs. (15.9Kg) or less" and use screws provided with the outlet box.



**WARNING:** To avoid possible electrical shock, turn the electricity off at the main fuse box before wiring.



**WARNING:** To reduce the risk of electrical shock, this must be installed with an isolating wall control/switch.



**CAUTION:** To reduce the risk of personal injury, use only the screws provided with the outlet box.



**CAUTION:** Please use carefully when working around or cleaning the fan to avoid injury or damage of fan.

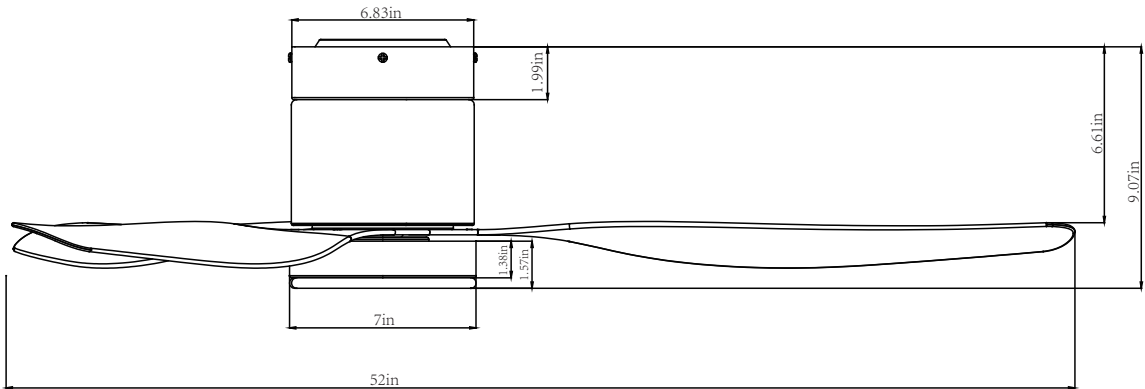


**CAUTION:** The fan must be mounted with a minimum of 7 ft (2.1 m) clearance from the trailing edge of the blades to the floor.

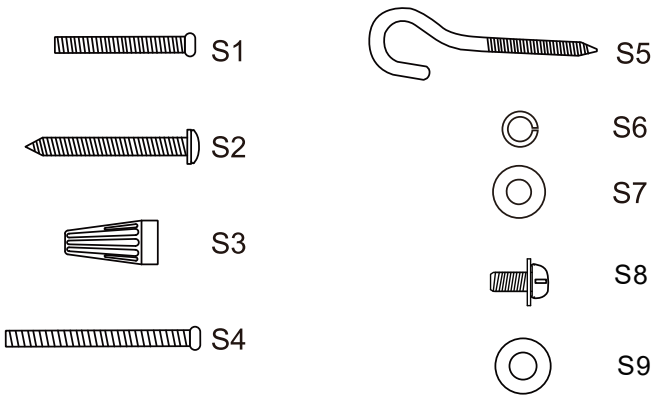


**CAUTION:** Changes or modifications not expressly approved by the party responsible for compliance could void the user's authority to operate the equipment.

# Dimension Reference

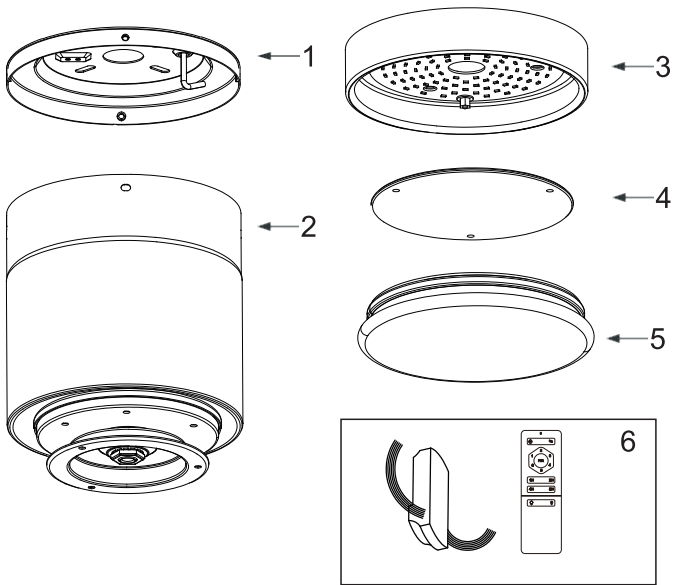


# Hardware Included

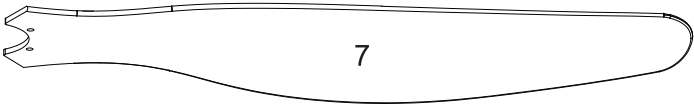


Hardware Package	Quantity
S1. Screw	2
S2. Wood Screw	4
S3. Wire Nut	3
S4. Screw	2
S5. J-Hook	4
S6. Washer	4
S7. Lock Washer	1
S8. Screw	1
S9. Washer	1

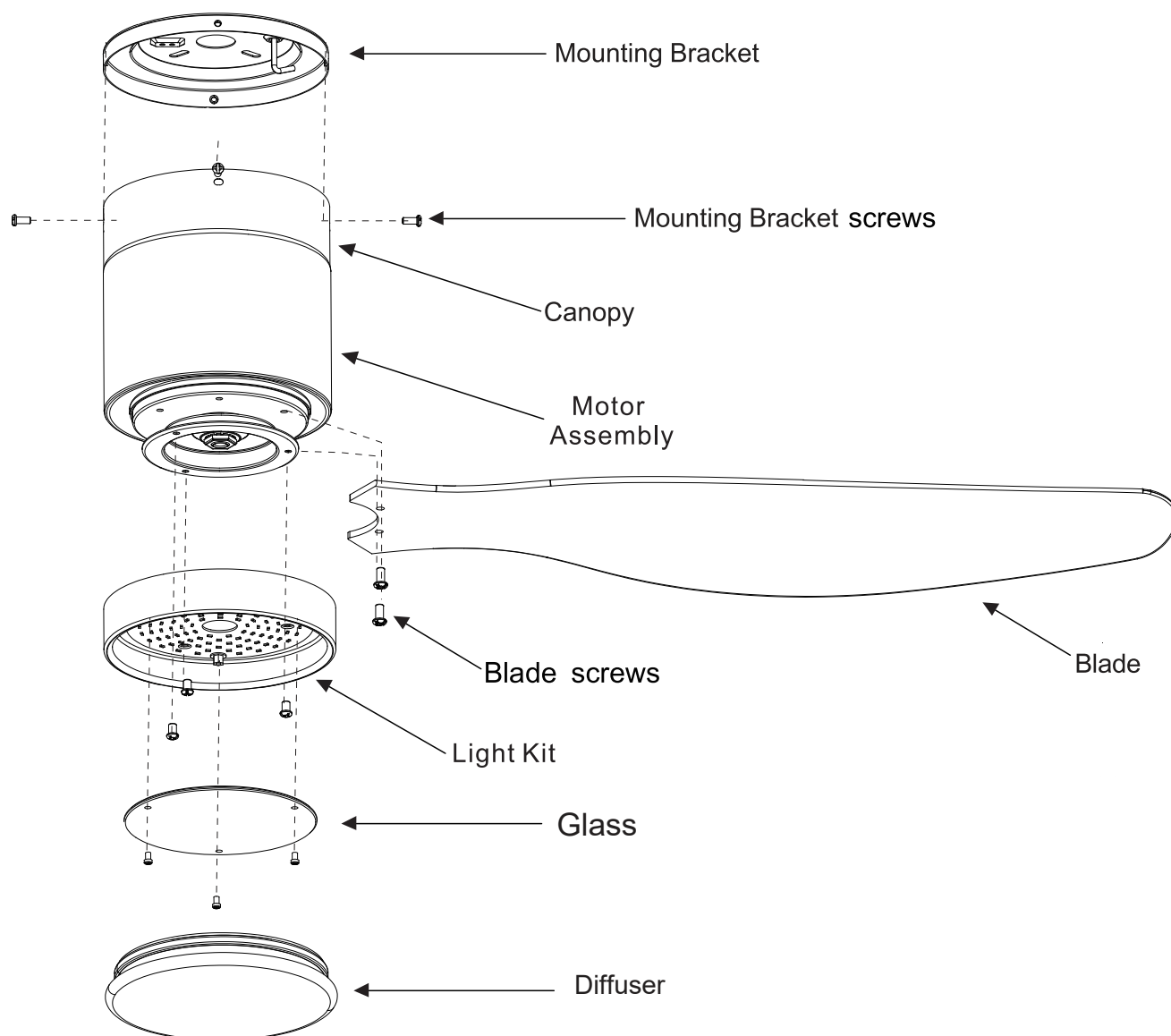
# Fan Parts Included



	Quantity
1. Mounting Bracket	1
2. Motor Assembly	1
3. Light kit	1
4. Glass	1
5. Diffuser	1
6. Remote Control(Batteries not included)	1
7. Blade	3



# Exploded View

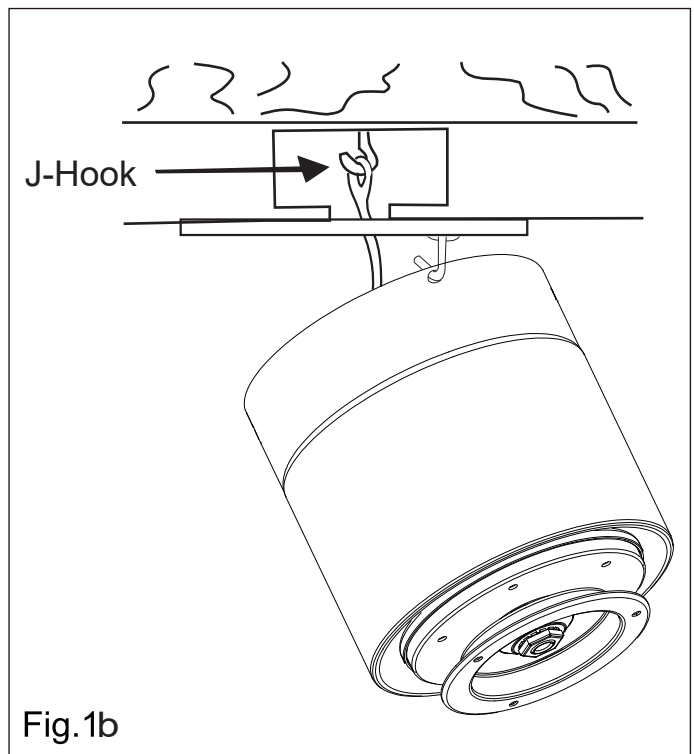
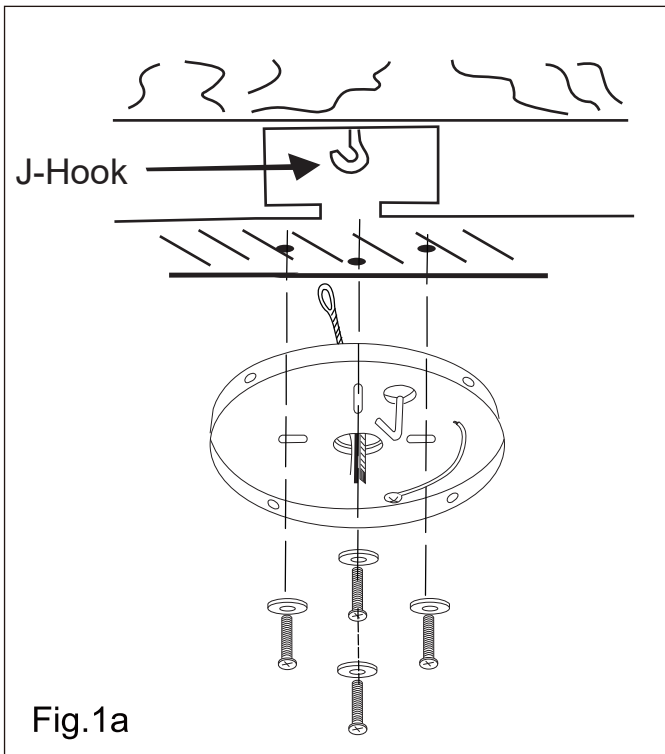


# Installation Instructions

## Step1 MOUNTING

- Install J-Hook through centre of outlet box and into the wooden joist.
- Secure the mounting bracket to outlet box with screws.
- Hang the motor assembly onto the temporary hook on the mounting bracket.

**CAUTION :** To ensure wobble - free operation and to avoid damage to the fan, the downrod and the set crew must be completely tightened .



## Step2 ELECTRICAL HOOK-UP

A. Make the following wire connections using the wire nuts supplied.

a To the household supply wires

- Connect the following 3 GREEN wires to the GREEN supply wire.

1. GREEN wire from the receiver
2. GREEN wire from the motor
3. GREEN wire from the mounting bracket

- Connect BLACK receiver wire to BLACK supply wire.

- Connect WHITE receiver wire to WHITE supply wire.



## Installation Instructions

B. Push all connected wires up into ceiling box.

- Position the receiver into the upper part of the motor assembly as shown direction.
- When installing the canopy, ensure the antenna is not pressed by the canopy.
- Ensure to connect all ground wires accordingly.
- When installing the canopy, ensure the antenna is not pressed by the motor assembly.

Fig.3a

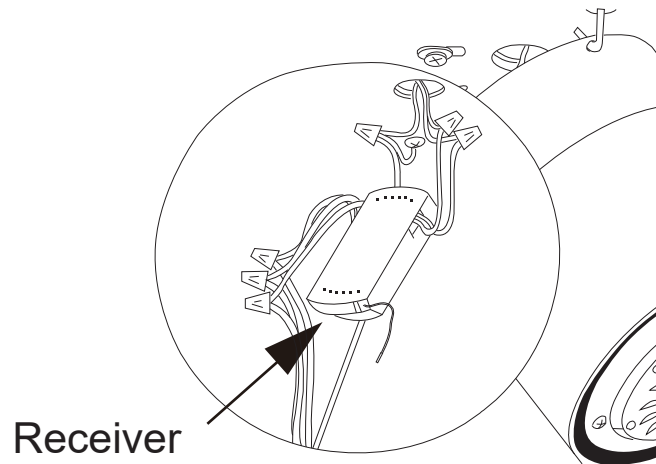
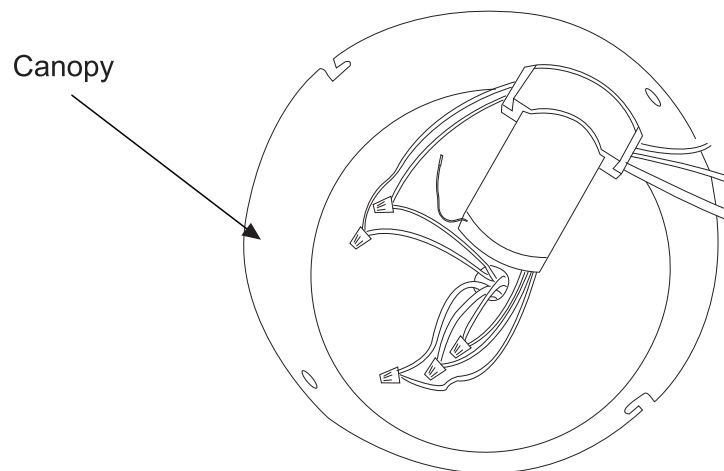


Fig.3b



# Installation Instructions

## C.FUNCTION INSTRUCTION OF EMITTER

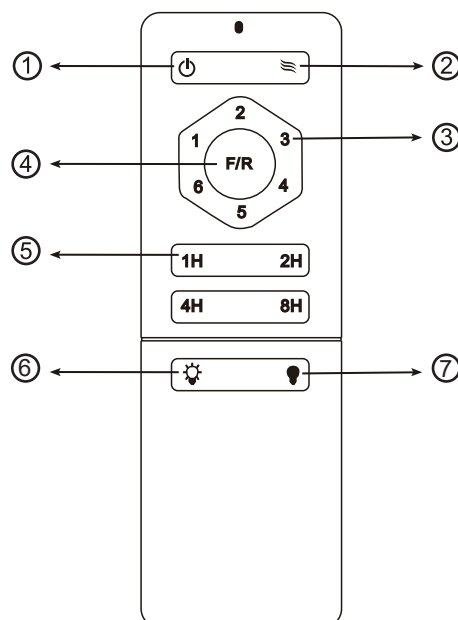
Learning code and matching mode is used between emitter and receiver.

- Open battery cover on the hand-held remote and install battery, pair of AAA of emitter (1.5V) that are not included.
- If the emitter can not control the fan, learning code matching mode is used between emitter and receiver.

Turn "ON" the supply power within 10 seconds and press the emitter's " ⏻ " button for 5 seconds, it can load normally after hearing a long sound "bee", which means learning successfully and it can works normally.

- When the emitter cannot control the receiver, please check the battery switch touching normally or not, correction of the positive and negative, full or empty of the power.
- When the emitter cannot control the receiver, please check is there any existence of similar remote controlled products nearby, then check whether they works, because remote controlled product with the same frequency will disturb each other.
- Please take out the battery from the emitter when leaving unused for long time.
- When installing the fan, the fan ceiling cover don't press the antenna(or other wire),it is easy to breakdown the wire and short-circuited.

- ① Fan Shutdown
- ② Natural Wind
- ③ Speed Controller
- ④ Rotation Direction
- ⑤ Timer
- ⑥ Light ON
- ⑦ Light OFF





# Installation Instructions

## Step3 MOUNTING BRACKET TO MOTOR

**WARNING:** To Reduce The Risk Of Fire, Electric Shock, Or Personal Injury, Mount To UL/CSA Listed Outlet Box Marked Acceptable for Fan Support And Use Mounting Screws Provided With The Outlet Box.

- Loose 2 screws(opposite angles) and remove the 2 other on the mounting bracket.
- Position motor assembly to mounting bracket aligning slots to the 2 loosed screws and turn to lock.
- Position and tighten the 2 screws previously removed then retighten the 2 loosed screws.

Fig.4a

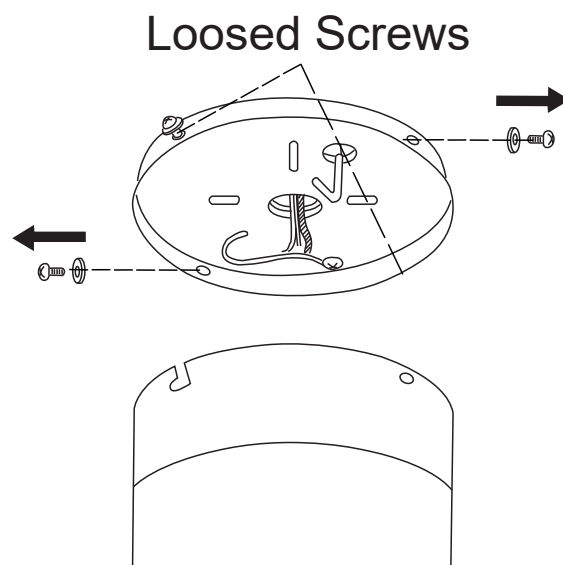
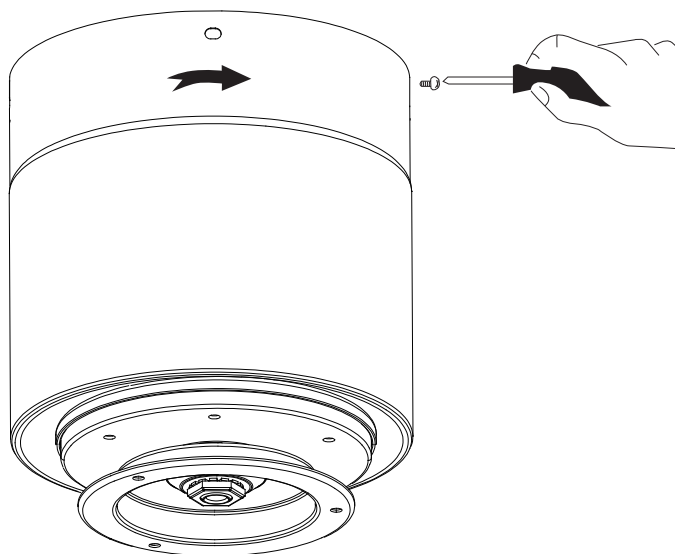


Fig. 4b

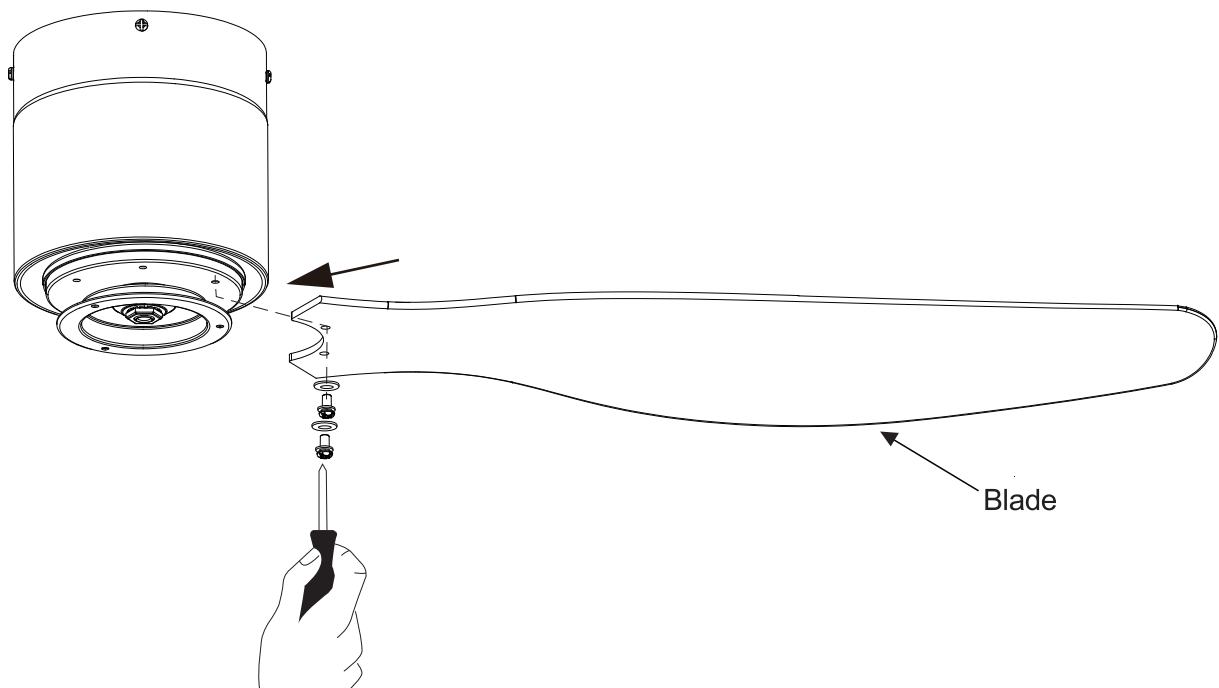


# Installation Instructions

## Step4 MOUNTING BLADES TO MOTOR

- Loose the screw from the motor assembly.
- Align with corresponding hole in blade.
- Repeat with (2) remaining screws and tighten.

Fig.5

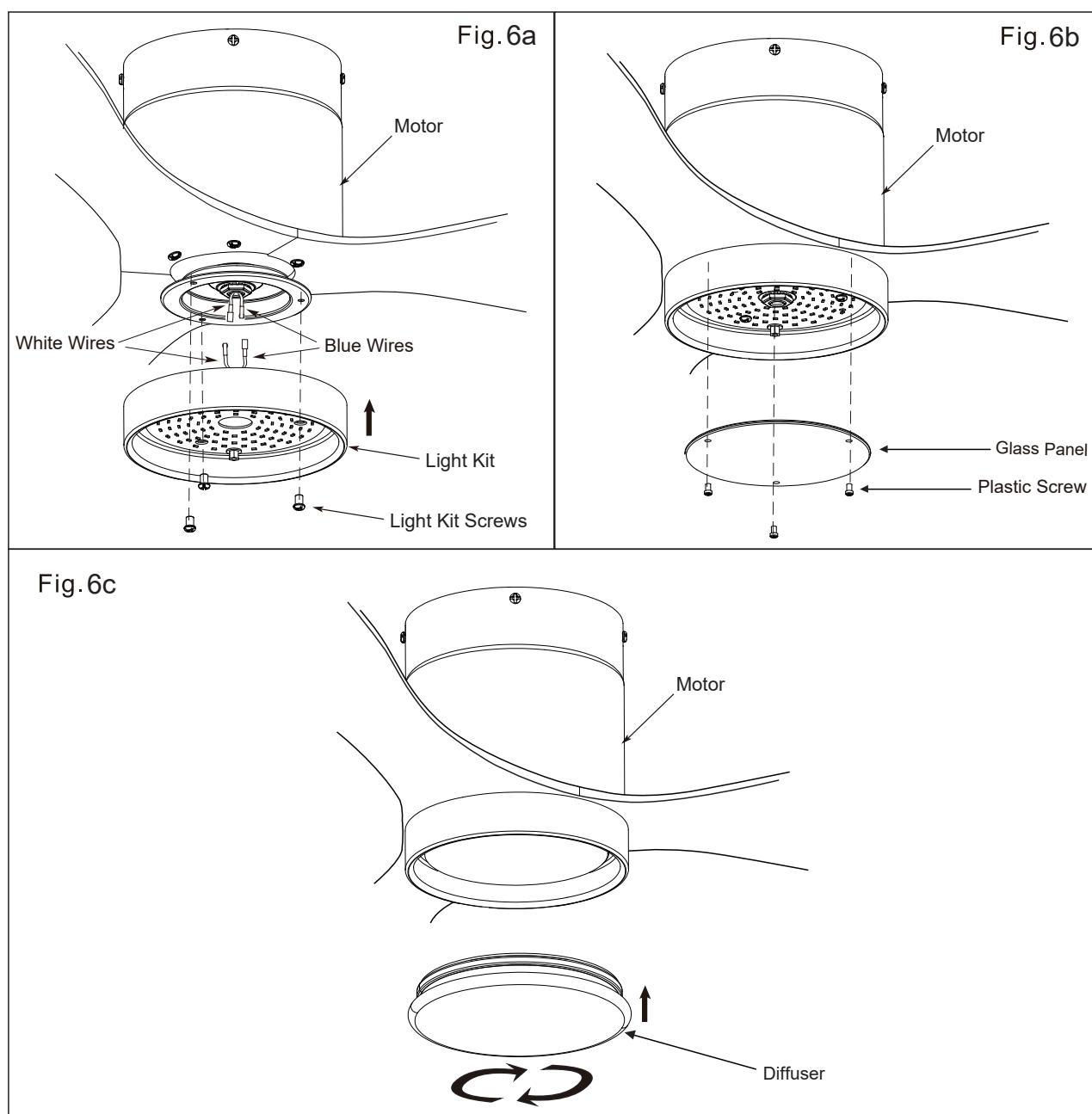


# Installation Instructions

## Step5 LIGHT KIT

**WARNING:** BE SURE TO TURN OFF POWER BEFORE INSTALLING.

- Remove glass panel and 3 plastic screws from light kit
- Remove 3 light kit screws and washers from motor assembly
- Connect polarized connectors of light kit to corresponding connectors found in switch housing (connect WHITE light kit unit wire to WHITE fan wire, connect BLUE light kit unit wire to BLUE fan wire)
- Install the light kit to the fan motor assembly by tightening 3 light kit screws.
- Install the glass panel on the light kit by tightening the 3 plastic screws
- Screw the diffuser to the Light kit.



# Troubleshooting Guide

If you have difficulty operating your new ceiling fan it may be the result of incorrect assembly, installation, or wiring. In some cases these installation errors may be mistaken for defects. If you experience any faults please check this troubleshooting guide.

	Problem	Suggested Remedy
1	If fan does not start.	<ul style="list-style-type: none"> <li><input type="checkbox"/> Check the main and branch circuit fuses or breakers.</li> <li><input type="checkbox"/> Check the line wire connections to the fan and switch wire connections in the switch housing.</li> <li><input type="checkbox"/> Check the battery in the remote control.</li> <li><input type="checkbox"/> Ensure you are in the normal range of 10-20 feet.</li> </ul>
2	If fan sounds noisy.	<ul style="list-style-type: none"> <li><input type="checkbox"/> Ensure all motor housing screws are snug.</li> <li><input type="checkbox"/> Ensure the screws that attach the fan blade bracket to the motor hub are tight.</li> <li><input type="checkbox"/> Ensure the wire nut connections are not rattling against each other or the interior wall of the switch housing.</li> <li><input type="checkbox"/> Allow a 24-hour "breaking in" period. Most noises associated with a new fan disappear during this time.</li> <li><input type="checkbox"/> If you are using the Ceiling Fan light kit, ensure the screws securing the glassware are tight. Check that the light bulbs are also secure.</li> <li><input type="checkbox"/> Ensure the canopy is a short distance from the ceiling. It should not touch the ceiling.</li> <li><input type="checkbox"/> Ensure your outlet box is secure and rubber isolator pads were used between the mounting plate and outlet box.</li> </ul>
3	If fan wobbles.	<ul style="list-style-type: none"> <li><input type="checkbox"/> Check that all blades are screwed firmly into blade holders.</li> <li><input type="checkbox"/> Check that all blade holders are tightened securely to motor.</li> <li><input type="checkbox"/> Make sure that canopy and mounting bracket are tightened securely to ceiling junction box and junction box is mounted firmly to ceiling joist .</li> <li><input type="checkbox"/> Most fan wobble problems are caused when blade levels are unequal. Check this level by selecting a point on the ceiling above the tip of one of the blades keeping measure within 1/8 in. Rotate the fan until the next blade is positioned for measurement. Repeat for each blade. If all blade levels are not equal you can adjust blade levels by the following procedure. To adjust a blade tip down insert a washer(not supplied) between the blade and blade holder at the screw closest to the motor. To adjust a blade tip up insert washer(not supplied) between the blade and blade holder at the two screws farthest from the motor.</li> <li><input type="checkbox"/> If blade wobble is still noticeable interchanging two adjacent (side by side) blades can redistribute the weight and possibly result in smoother operation.</li> </ul>
4	If light does not work.	<ul style="list-style-type: none"> <li><input type="checkbox"/> Check blue wire from fan to make sure it is connected to hot wire from the house.</li> <li><input type="checkbox"/> Check for loose or disconnected wires in fan switch housing.</li> <li><input type="checkbox"/> Check for loose or disconnected wires in light kit .</li> <li><input type="checkbox"/> Check for faulty light bulbs. CAUTION: Make sure main power is turned off before entering switch housing.</li> <li><input type="checkbox"/> If the fan light shuts off shortly after being switched on it may be due to excessive current demand. Turn off power to the fan and replace the light bulbs with lower wattage bulbs. Turn on power to the fan using the pull chain, wall switch, or remote control (whichever is installed on the particular fan).</li> </ul>