

Quick Start Guide

For Cree Lighting®
Connected Max™ Smart LED Bulbs



Contents

System Requirements.....	3	Using Common Functions	12	Voice Assistant Activation	19
What are the minimum system requirements for the Cree Lighting app?.....	3	Using Scenes	13	Amazon Alexa.....	19
Can I download the Cree Lighting app for iPad?.....	3	How to Edit Scenes	13	Google Assistant	20
		Create Schedules.....	14	Google Assistant	21
Getting Started	4	Set Up Routines	15	Siri.....	22
Download the App.....	4	Light to Sleep.....	15	Groups	23
Pairing Bulb to App.....	5	Light to Wake	16	Create Groups.....	23
Resetting the Bulb (if needed).....	6	Timer.....	16	Edit Groups	24
Guided Setup.....	7	Follow the Sun	17	Delete Groups	25
		Turn on Follow the Sun.....	17	Controlling Groups.....	25
Adding Additional Bulbs	8	Set Follow the Sun Schedule.....	17	Automate	26
		Edit Times in the Schedule	17	Home Management.....	27
Control Your Lights.....	9	Edit Preset Actions	18	Edit Existing Rooms	27
Control Individual Bulbs	9	Add New Action.....	18	Add New Rooms.....	28
Turning Individual Bulbs On/Off	9	Adjust Light Transition Mode.....	18	Device Share	29
		Follow the Sun	18	Need more help?	30
Dimming	10				
Tunable White + Color Bulb.....	10				
Dimmable White Bulb.....	10				
Changing Color Temperatures and Colors..	11				
Tunable White	11				
Color Changing	11				

System Requirements

What are the minimum system requirements for the Cree Lighting app?

To download and run the Cree Lighting app, you must have an **iPhone or iPod Touch that runs iOS 9.0 or newer or an Android smart phone that runs Android 4.4 or newer**. May not be compatible with all devices. If you are unable to download the app, the product is not compatible with your device.

ATTENTION:
Cree Connected
Max Smart LED
Bulbs do not work
with wall dimmer
switches.

Can I download the Cree Lighting app for iPad?

There is not a separate app for iPad and iPhone. However, you can download the iPhone version on your iPad:

- 1 On your iPad, tap on App Store
- 2 Tap Search on the bottom tool bar
- 3 In the search box at the top, type Cree Lighting and tap search button
- 4 Tap on Filters in the upper left-hand corner
- 5 Next to Supports, tap iPad only, then tap to change to iPhone only
- 6 Cree Lighting app will be displayed in the search and tap Get/iCloud download button next to app name to start download

Getting Started

Thank you for purchasing the Cree Lighting Connected Max LED bulb. Let's get started!



CREE
LIGHTING

Visit our channel for instructional videos.

<http://bit.ly/3msEhzD>

Download the App

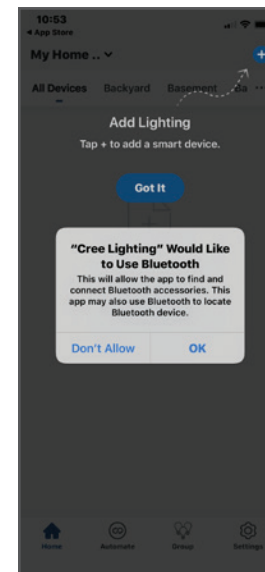
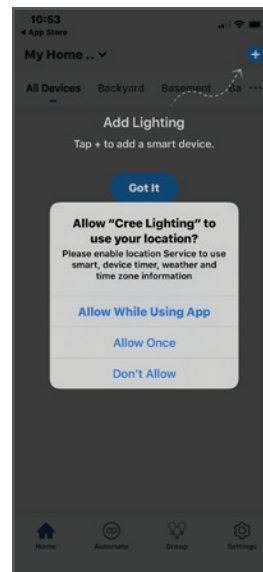
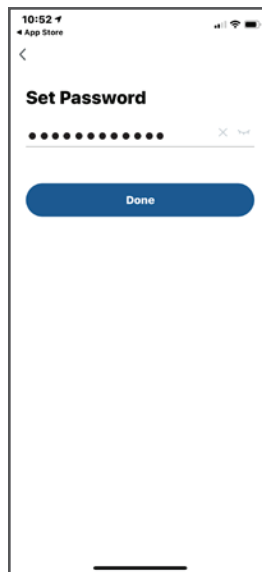
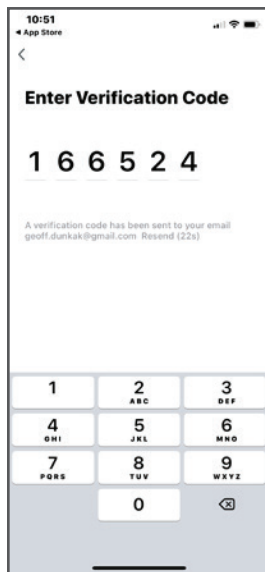
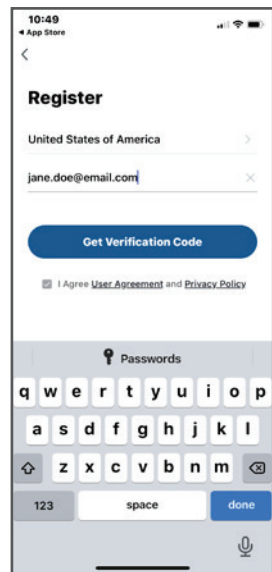
1. Download the Cree Lighting app from the App Store or Google Play
2. Register an account on your Cree Lighting app

1 Enter your email address

2 Enter the verification code sent to your email address

3 Create a password

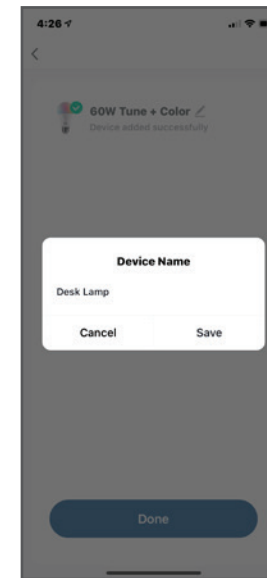
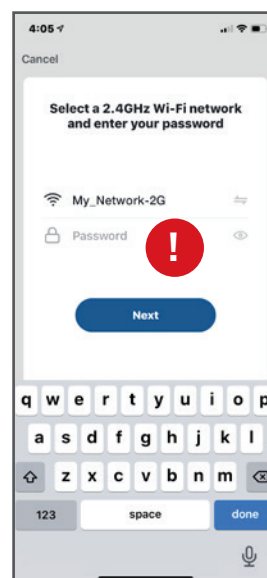
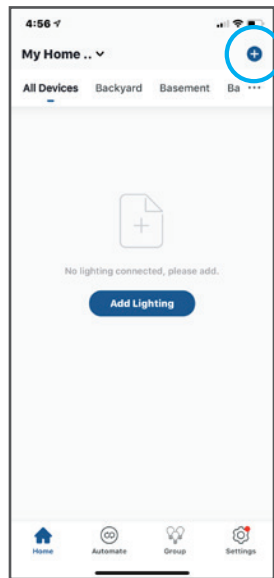
4 Enable location services and Bluetooth as they pop up



Pairing Bulb to App

Install the Cree Lighting Connected Max LED bulb you want to pair. Once installed in the socket, light should start slowly flashing to indicate pairing mode. **If the bulb is not slowly flashing, it may need to be reset - see page 5.**

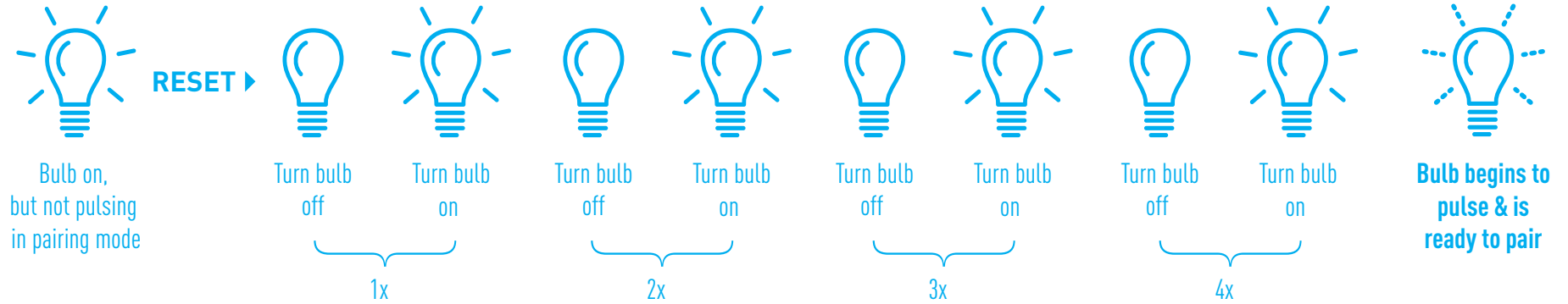
- 1 In the Cree lighting app, tap the + sign in the upper right-hand corner of the Home screen
- 2 The bulb you are pairing will appear on screen, tap Next
- 3 The Wi-Fi network your phone is connected to will appear. You can change your network (if needed) and enter password
- 4 The Cree Lighting app will add your bulb
- 5 Once added, you can rename your bulb by tapping the pencil icon next to the name – then click Done



! **IMPORTANT:** You must be connected to a 2.4GHz network. Bulbs are not compatible with 5GHz WiFi networks. If your router supports both the 2.4GHz and 5GHz bands, but only one WiFi name is displayed on the WiFi search page of your phone, see our [Wireless Router Guide at http://bit.ly/3lyZ5oc](http://bit.ly/3lyZ5oc)

Resetting the Bulb (if needed)

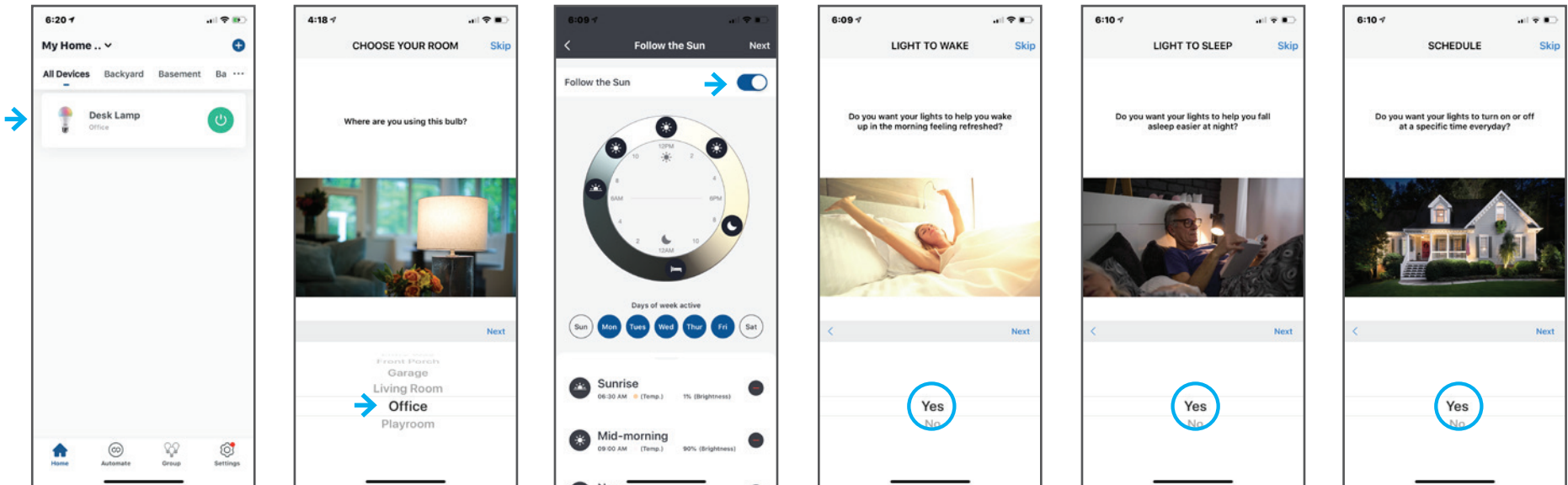
If it is not flashing, please reset the bulb into pairing mode **by turning it off and on four times** until it begins to slowly flash. Return to pairing instructions on page 4.



Guided Setup

Once the bulb is paired to the app, you can now complete setup and personalize your lighting experience.

- 1 Tap the bulb image on the Home screen to begin guided setup
- 2 **Choose your room**
To begin setup of your smart lighting, choose the room in where you are using this bulb. If it is not listed, or you want to customize it, you can edit in Home Management after the initial setup
- 3 **Follow the Sun**
Select Yes or No to enable Follow the Sun and have your light automatically adjust its color and intensity to mimic the sun throughout the day
- 4 **Light to Wake**
If you are using the bulb in a bedroom, you may want to enable Light to Wake and have your lights help wake you up in the morning
- 5 **Light to Sleep**
If you are using the bulb in a bedroom, you may want to enable Light to Sleep and have your light help you fall asleep easier at night
- 6 **Schedule**
Select Yes or No to set a schedule to have your lights turn on, off, or adjust color at specific times
- 7 After setup, click Done and you are ready to control your bulb

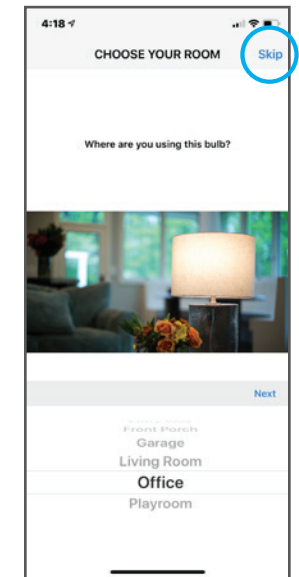
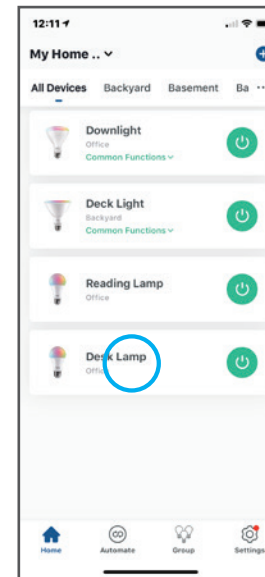
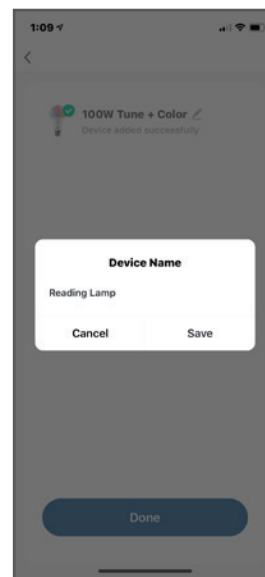
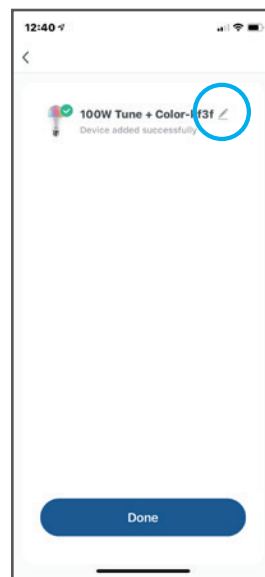
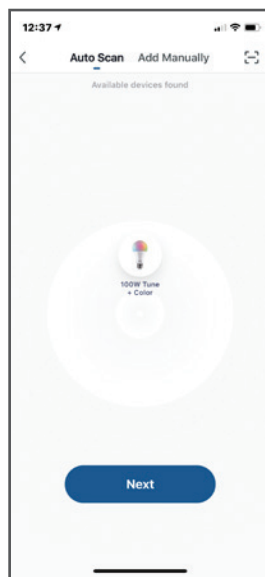
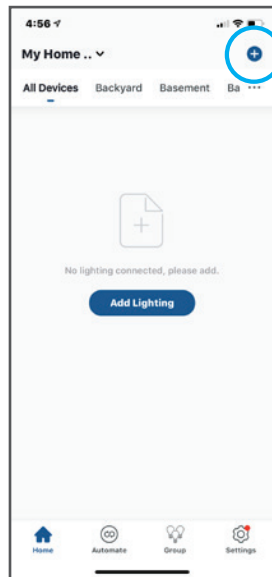


Adding Additional Bulbs

Install additional Cree Lighting Connected Max LED bulbs you want to pair (you may pair more than one bulb at a time.) The light should be slowly flashing. If it is not, reset the bulb into pairing mode by turning it off and on four times until it begins to slowly flash. See page 5 for reset instructions.

Pairing Bulb to App

- 1 In the Cree lighting app, tap the + icon in the upper right-hand corner of the Home screen
- 2 The bulb(s) you are pairing will appear on screen, tap Next
- 3 The Cree Lighting app will add your bulb
- 4 Once added, you can rename your bulb by tapping the pencil icon next to the name – then click Done
- 5 The first time you tap on the bulb on the home screen, you will be prompted to start guided setup. To set features and schedules later, tap Skip in the upper right corner



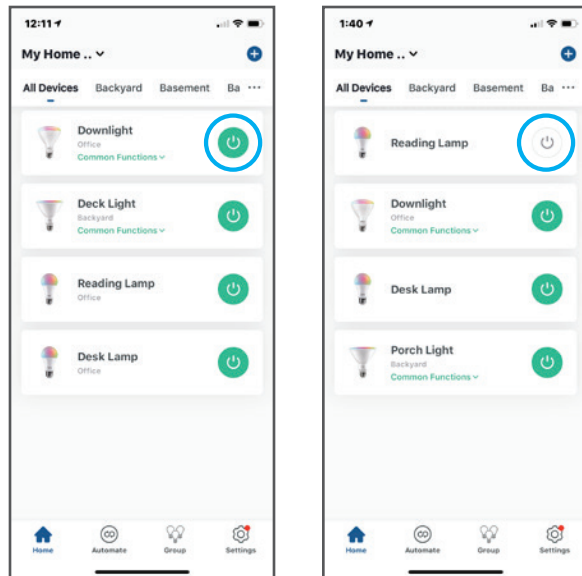
Control Your Lights

There are two types of Cree Lighting Connected Max LED bulbs—**tunable white** and **color changing**—follow the instructions for your bulb.

Turning Individual Bulbs On/Off

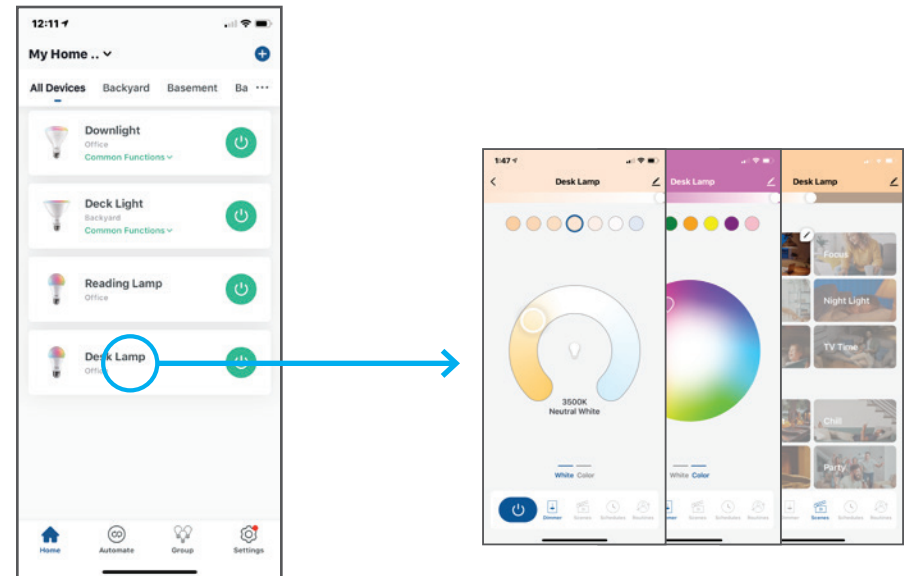
From the home screen, tap on the circle on the right-hand side of the bulb to turn that bulb on or off.

If the circle is green the bulb is on, if the circle is white the bulb is off.



Control Individual Bulbs

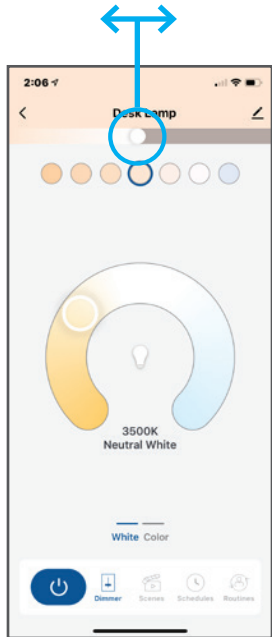
From the home screen, tap on the name of the bulb to control an individual bulb.



Dimming

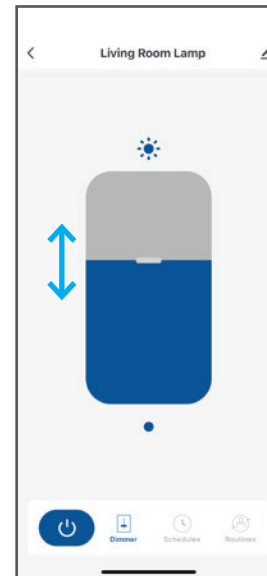
Tunable White + Color Bulb

Slide the dimming bar underneath the header to the left to dim the bulb and to the right to brighten the bulb



Dimmable White Bulb

Slide the dimming bar in the middle of the screen down to dim the bulb and up to brighten the bulb



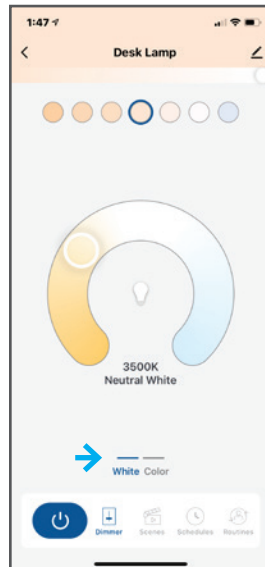
Changing Color Temperatures and Colors

Tunable White

Use the large round slider in the middle of the Dimmer page to adjust the color temperature from 2200K Candlelight on the far left to 6500K on the far right.

You can also select from 7 preset color temperatures by tapping on the small circles above the round slider. From left to right:

- Candlelight 2200K
- Soft White 2700K
- Bright White 3000K
- Neutral White 3500K
- Cool White 4000K
- Daylight 5000K
- Sun Light 6500K



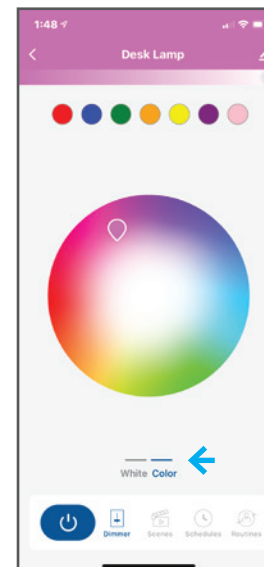
Color Changing

Swipe right underneath the round slider to toggle between White Tunable and Color Changing control pages.

Tap on any part of the large color circle to select your color light.

You can also select from 8 preset colors by tapping on the small circles above the large color circle. From left to right:

- Red
- Blue
- Green
- Orange
- Yellow
- Purple
- Pink



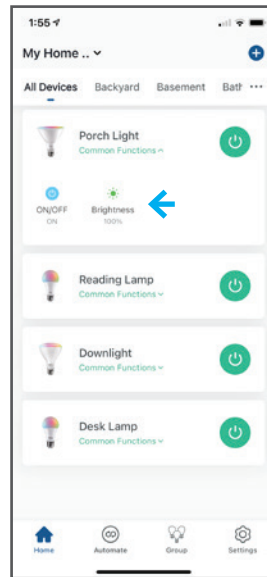
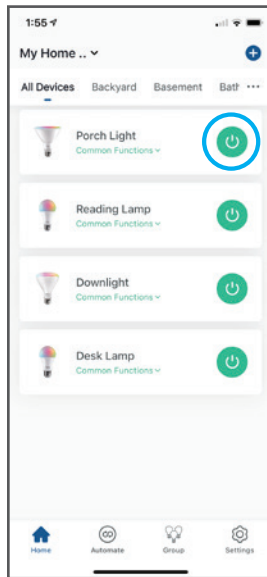
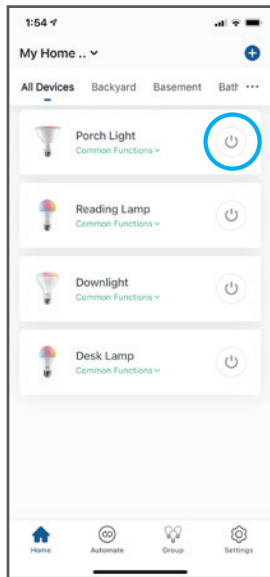
Using Common Functions

Common Functions is a way to quickly turn on, off or dim without having to go into the full controls.

Use the power icon to the right of the bulb to turn On/Off.

Off is white, On is green.

Use the Common Functions drop down to adjust the brightness of the bulb or turn it on/off.

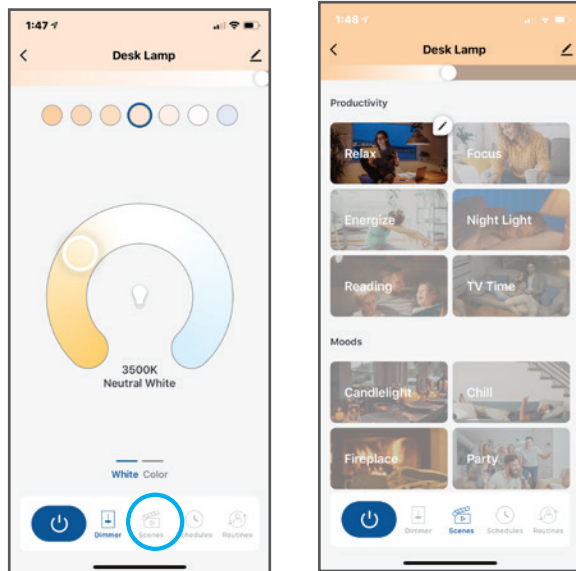


Using Scenes

Tap on Scenes in the bottom toolbar to access a menu of preset dynamic scenes, to find the perfect light output for every occasion.

On the scenes page, you can choose from dozens of preset dynamic scenes in three categories:

- Productivity – find the right light for reading, relaxation or working
- Moods – set the mood for that romantic dinner or house party
- Holidays – celebrate your favorite holidays by filling your home with fun, festive lighting



How to Edit Scenes

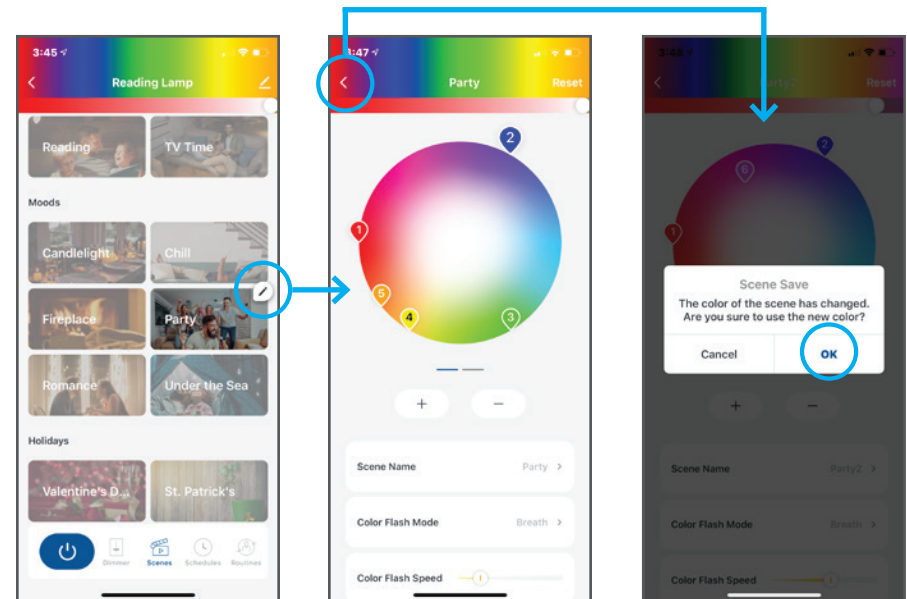
When you tap on a specific scene, you can edit the colors and action of that scene by tapping on the pencil in the upper right-hand corner of the scene widget.

From there you can edit the name of the scene, add/remove colors, increase/decrease the light intensity, as well as speed of which the light transitions.

To save, tap the < icon in the upper left hand corner and then tap OK.

To reset back the original preset scene at anytime, tap the pencil in the upper right-hand corner of the scene widget, and then tap Reset in the upper-right hand corner of the page.

To save, then tap the < icon in the upper left hand corner and then tap OK.



Create Schedules

Tap on Schedules in the bottom toolbar to set personalized schedules for your bulbs or groups.

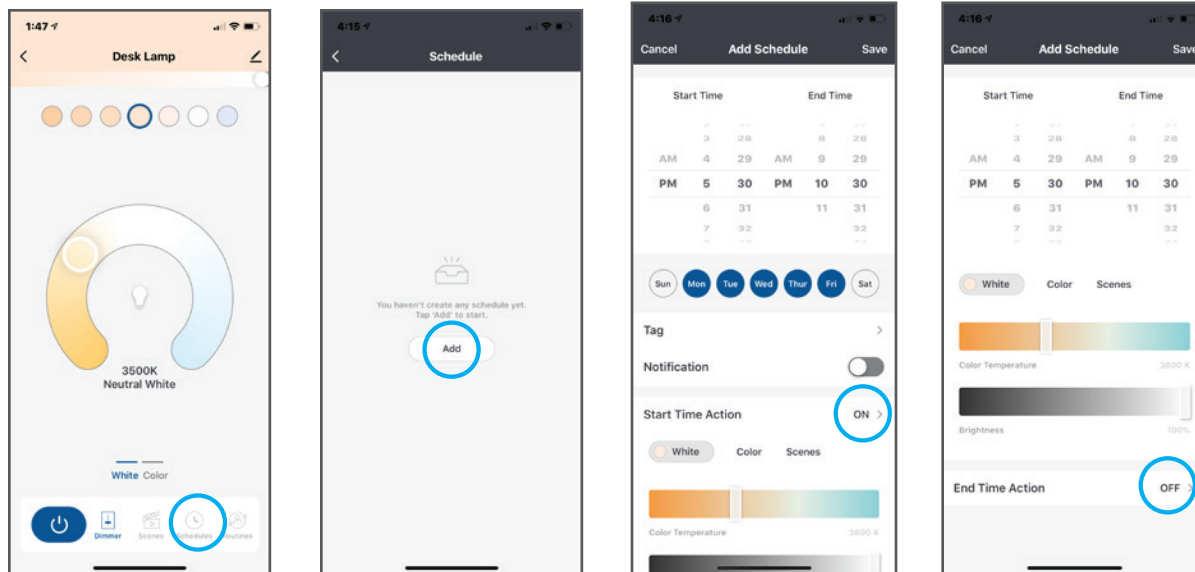
On the schedule page, tap add to create your schedule

Choose a start time (On) and end time (Off) and which days of the week you want the schedule to run

Then, choose a Start Time Action, where you can choose what type of light you want to turn on at that time: White, Color or Scene.

For End Time Action, choose Off and your lights will turn off at the designated end time you selected.

If you choose Yes you can customize a second light action for your lights to adjust again at the designated end time you selected (i.e. if you want dim your lights or change to another color).



Set Up Routines

Select your bulb, tap on Routines in the bottom toolbar, choose from these human centric lighting experiences: **Light to Sleep/Wake** | **Timer** | **Follow the Sun**



Light to Sleep/Wake

Light to Sleep

On the Light to Sleep/Wake page, tap add to create your specific schedule.

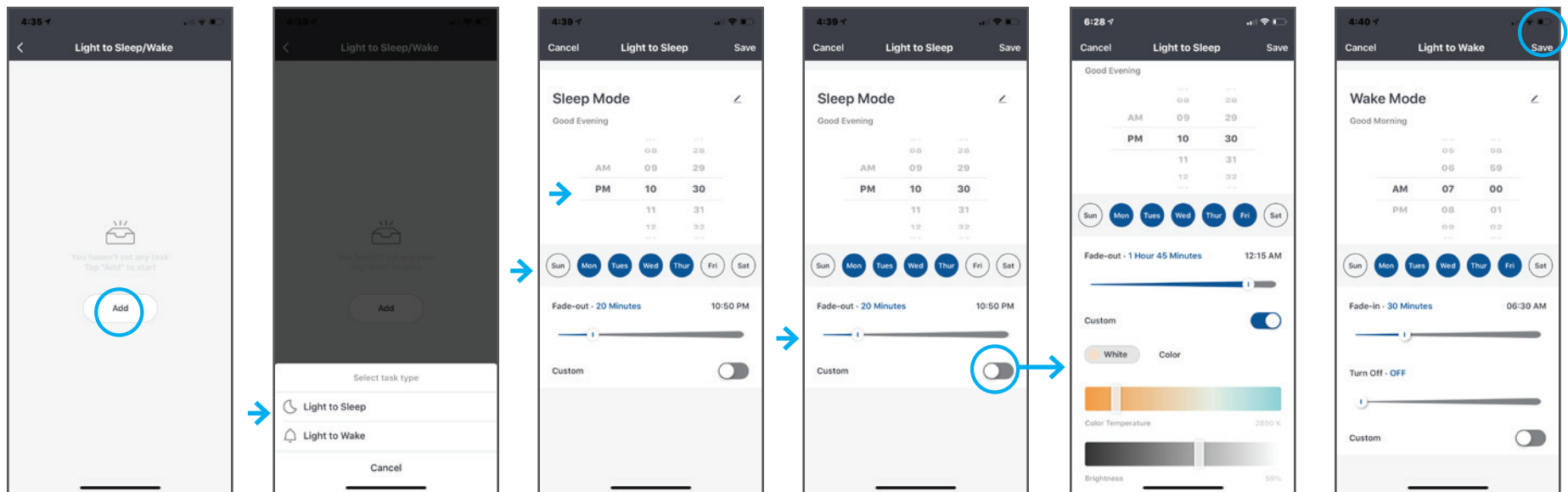
Tap on Light to Sleep to configure.

Choose a start time for the light to begin to slowly fade to off and which days of the week you want the schedule to run.

Choose a fade-out (off) time for what time you want the light to complete its fade to off.

You can also choose Custom to create a specific White or Color light for this action.

Tap SAVE in the upper right-hand corner to set schedule



Light to Wake

On the Light to Sleep/
Wake page, tap add to
create your specific
schedule.

Tap on Light to Wake to
configure.

Choose a start time for
the light to turn on and
slowly intensify in the
morning and which days
of the week you want the
schedule to run

Choose a fade-in (on)
time for what time you
want the light to turn on
and begin to fade-in.

Choose a time you want
the lights to turn off
after fade-in time is
complete.

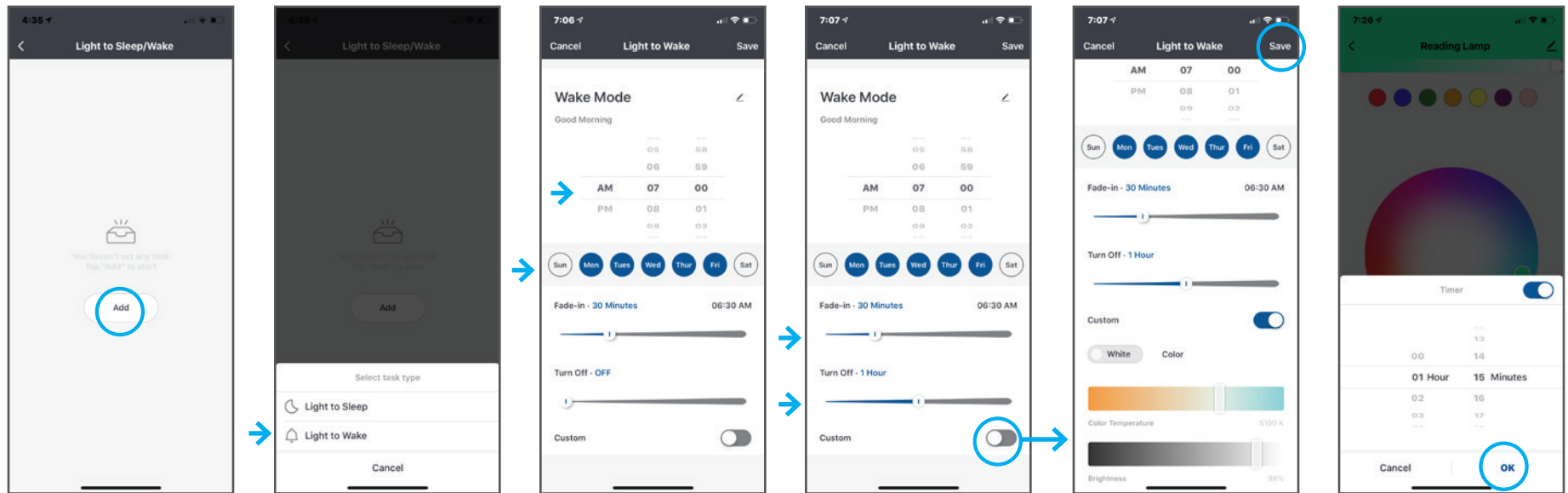
You can also choose
Custom to create a
specific White or Color
light for this action.

Tap SAVE in the upper
right-hand corner to set
schedule

Timer

Choose a duration for
how long you want the
lights to remain on
before shutting off.

Tap OK to set schedule



Follow the Sun

Bring the outdoors inside and automate your lights to gradually shift color throughout the day to mimic natural sunlight, which can improve your mood, well-being & productivity.

Warm light gradually brightening in the morning to cooler, more sun-like and brighter light at mid-day, then starting to dim and get warmer into the evening, eventually turning into night light for bedtime. Transitions are slow and smooth – just like the sun throughout the day.

The preset schedule for Follow the Sun is:

Sunrise 6:30AM – 2200K @ 1% brightness

Mid-morning 9AM - 4600K @ 90% brightness

Noon 12PM - 6500K @ 100% brightness

Afternoon 3pm - 4600K @ 100% brightness

Sunset 7:30pm - 2700K @ 100% brightness

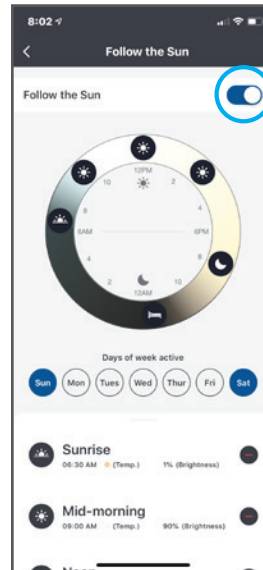
Bedtime 11:30pm - 2700K @ 0% brightness



FOLLOW THE SUN

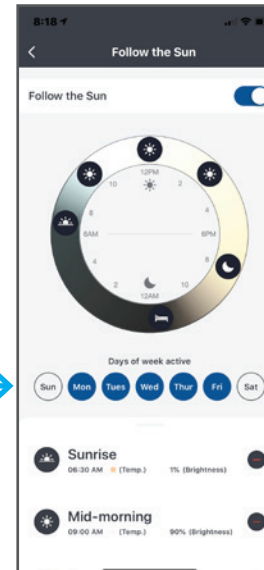
Turn on Follow the Sun

Tap Routines, then Follow the Sun. Use the toggle switch in the upper right-hand corner of the right to activate.



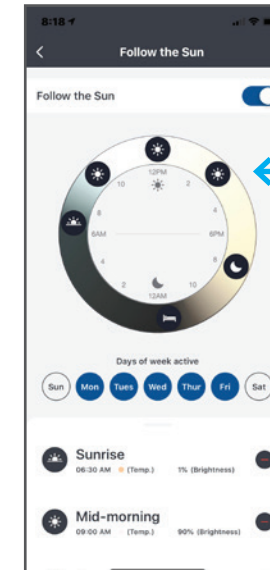
Set Follow the Sun Schedule

To set which days of the week you want your lights to Follow the Sun, tap the associated days of the week you want the action to run.



Edit Times in the Schedule

The large round slider in the middle of page shows the schedule of lights during Follow the Sun. To adjust the times of the different action, tap, hold and drag the appropriate icons around the circle on the large round slider.



Tap & drag icons to move their places in the Follow the Sun cycle.

Follow the Sun (continued)

Edit Preset Actions

You can also swipe up from the bottom will display the preset schedule for the times and actions throughout the day.

To edit an action, tap on the name of the action, from here you can edit the name of the action, adjust the time it begins, the color temperature and brightness of the light at that time, and which icon represent this action in the circle.

To delete an action tap Delete at the bottom and then tap OK.

Add New Action

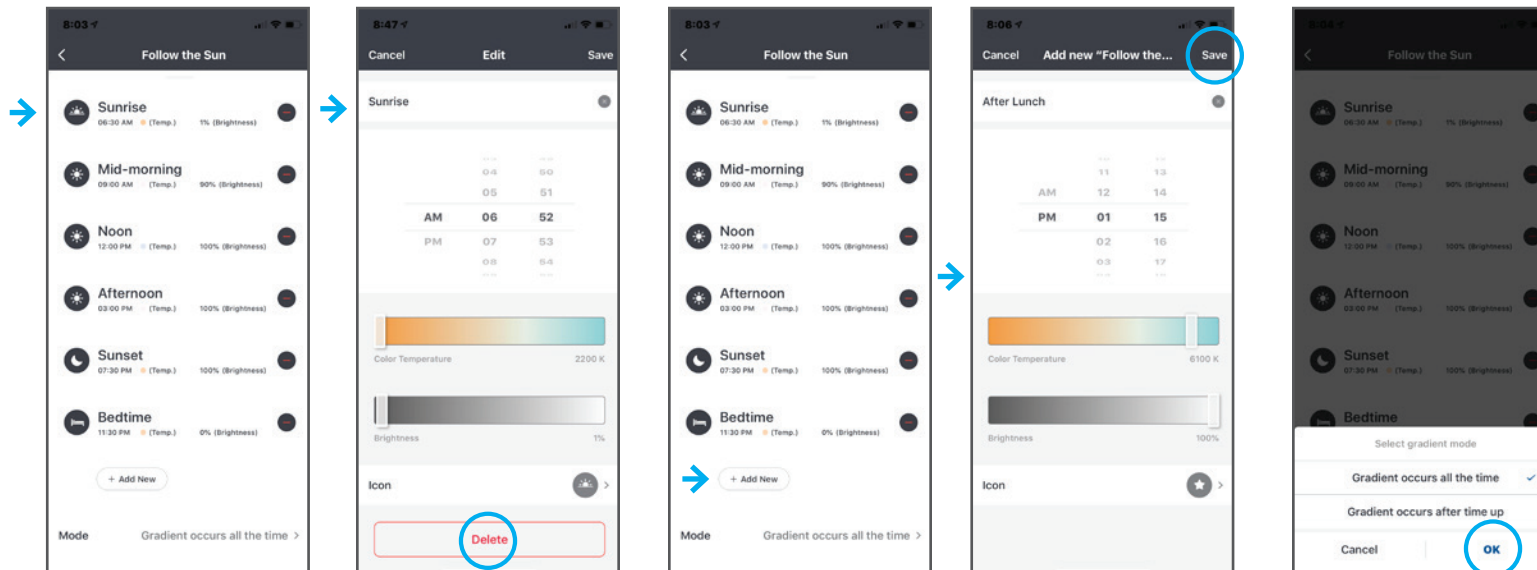
To add a new action, swipe up from the bottom to display the preset schedule for the times and actions throughout the day. At the bottom tap the + Add New button, then enter the name of the action, what time it begins, the color temperature and brightness of the light at that time, and which icon represent this action in the circle.

When done, tap Save in the upper right-hand corner.

Adjust Light Transition Mode

To adjust how the light transitions throughout the day, swipe up from the bottom to display the preset schedule for the times and actions throughout the day. At the bottom tap Mode. **Gradient occurs all the time:** allows the lights to slowly and smoothly transition throughout the day in color temperature and brightness (default). **Gradient occurs after time:** up keeps the lights at the color temperature and brightness set at each action point and doesn't change until the next action point.

Tap on which mode you prefer and tap OK.



NOTE: Follow the Sun is only available for individual bulbs and not for groups of bulbs.

This feature will be available in the future. To coordinate multiple bulbs in a room to all Follow the Sun together, you must configure each bulb individually.

Follow the Sun and Light to Wake/Sleep cannot run concurrently and you may receive an error message if trying to setup both at the same times.

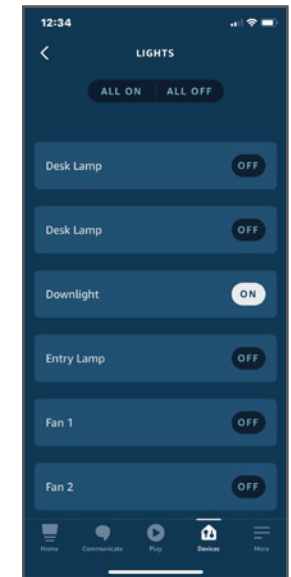
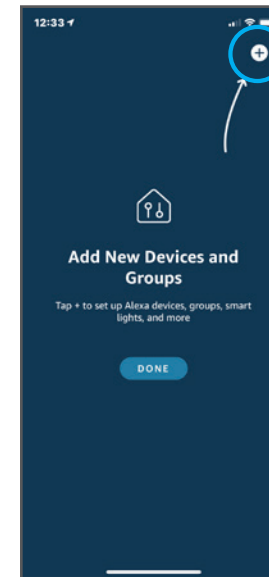
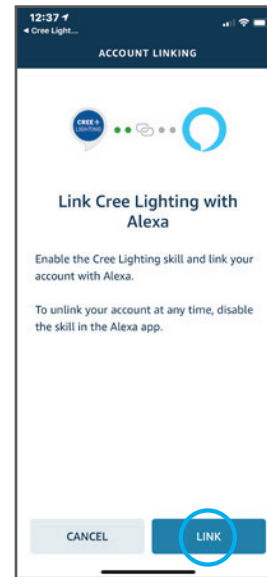
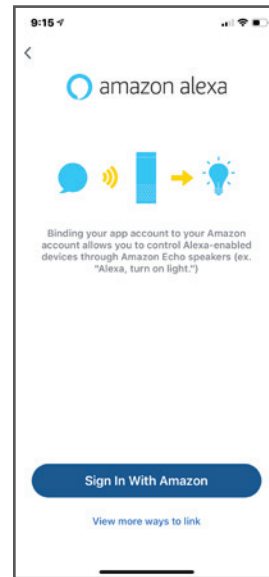
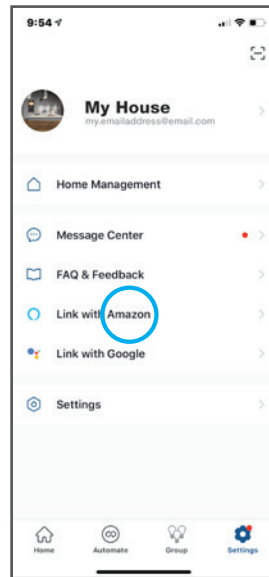
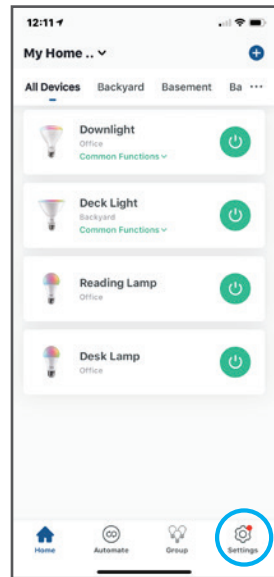
Voice Assistant Activation

Quickly and easily integrate your Connected Max LED bulbs with Amazon Alexa, Google Assistant, and Apple Siri devices for complete voice control.



Amazon Alexa

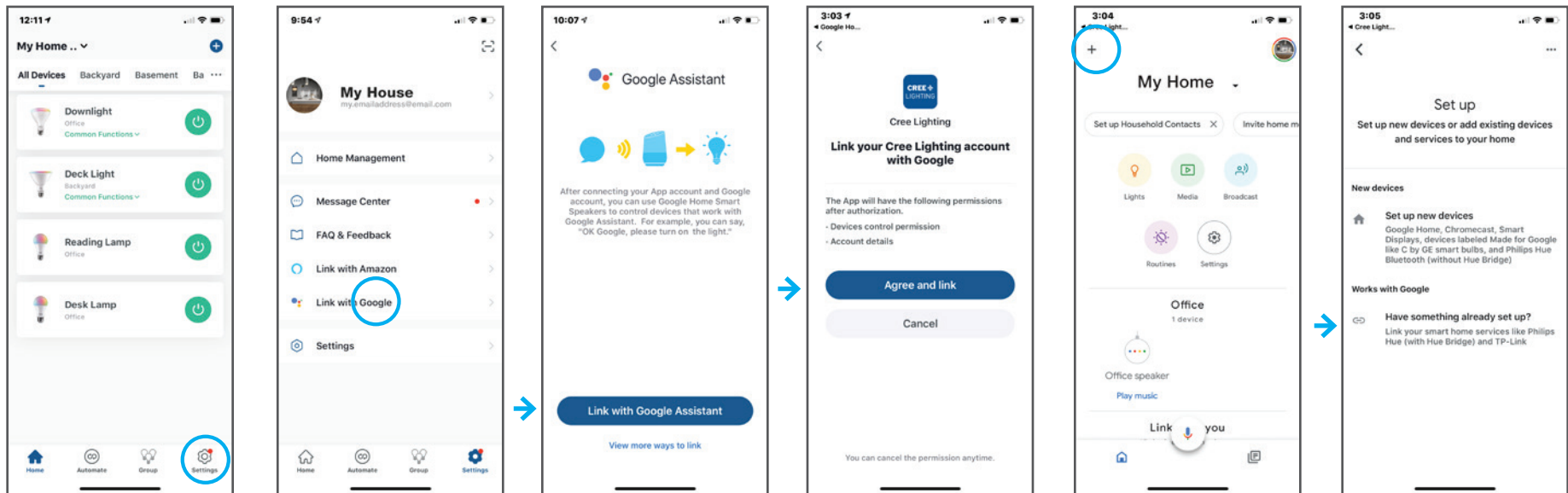
- 1 From the home screen, tap on Settings in the bottom toolbar
- 2 Tap Link with Amazon
- 3 Tap Sign in With Amazon, which opens the Amazon Alexa app
- 4 Tap on Link to enable the Cree Lighting skill in your Amazon Alexa app
- 5 In the Amazon Alexa app, tap Discover Devices. Alexa will now discover and add new devices
- 6 Once the devices are discovered, your bulb(s) will appear under Devices. You can rename, group or create scenes that Alexa will respond to when you use your voice assistant.



Google Assistant

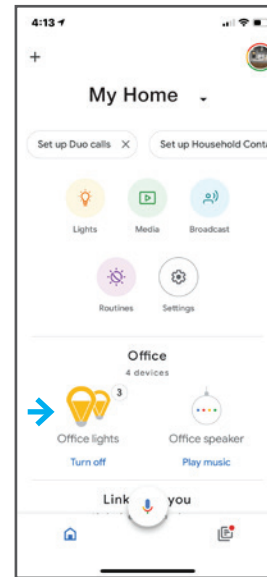
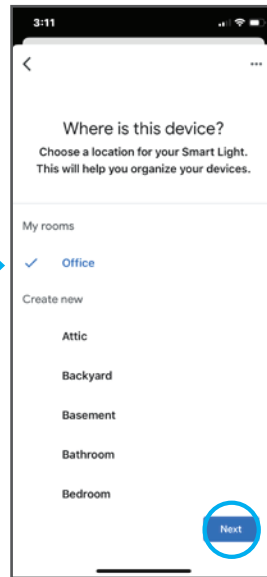
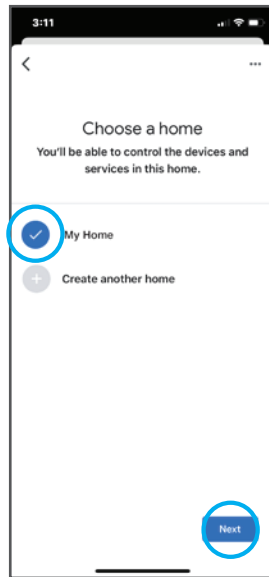
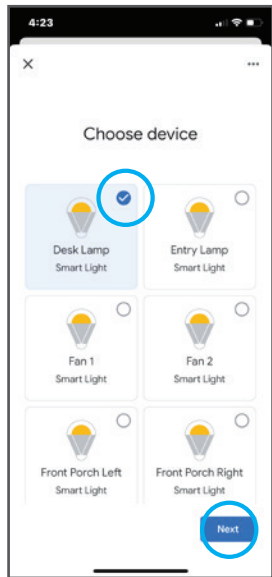
- 1 From the home screen, tap on Settings in the bottom toolbar
- 2 Tap Link with Google
- 3 Tap Link with Google Assistant, which opens the Google Home app
- 4 Tap on Agree and Link to enable the Cree Lighting skill in your Google Home app
- 5 From the home screen of Google Home, tap the + in the upper left corner
- 6 Tap on Have something already set up. Then tap on Cree Lighting.

Continued >



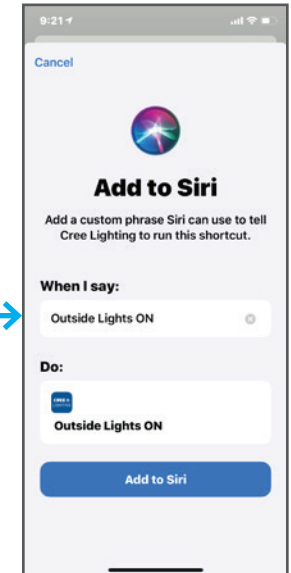
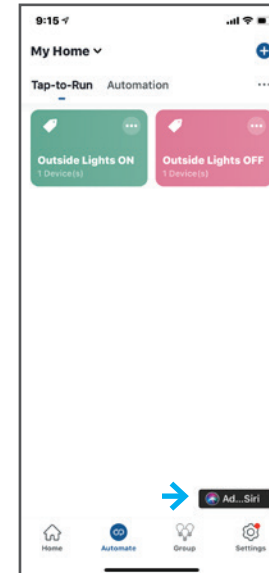
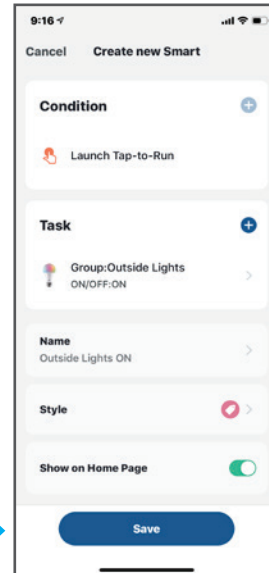
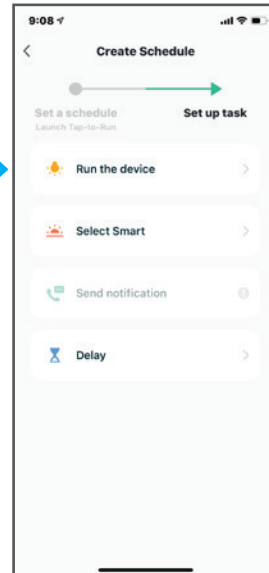
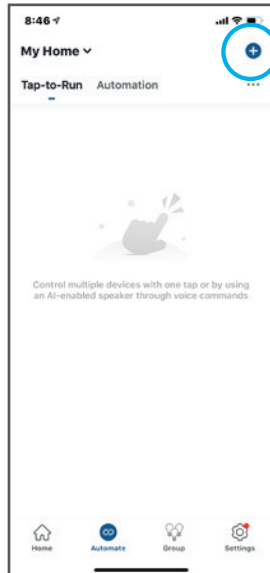
Google Assistant (continued)

- 7 Once the devices are discovered, tap on the device(s) and then tap Next.
- 8 Choose your home and then tap Next
- 9 Choose or create what room the bulb is in. Then tap next.
- 10 Your bulb(s) will now be accessible in the Google Home app. You can rename, group or create scenes that Hey Google will respond to when you use your voice assistant.



Siri

- 1 Ensure enable your Siri function in your iPhone.
iPhone > Settings > Siri & Search
- 2 In the Cree Lighting App, select "Automate", then "Tap-to-Run" Use the + to create a "Tap-to-Run" action. Siri will use these actions to complete your spoken requests.
- 3 Choose "Run the Device" and then select the bulbs you want to control.
- 4 "Tap-to-run" actions can turn light(s) on/off, change color temperatures, and set dimming. For example, you can turn on the outside lights and name the "Tap-to-Run" as "Outside Lights ON." Save when finished.
- 5 Then, click the "Add to Siri" button in the lower right corner. The next screen lists all "Tap-to-Run" actions and you can select which one you want to add to Siri.
- 6 After setup, you can say, "Hey Siri, 'Outside lights on!'", and the specified lights will turn on.

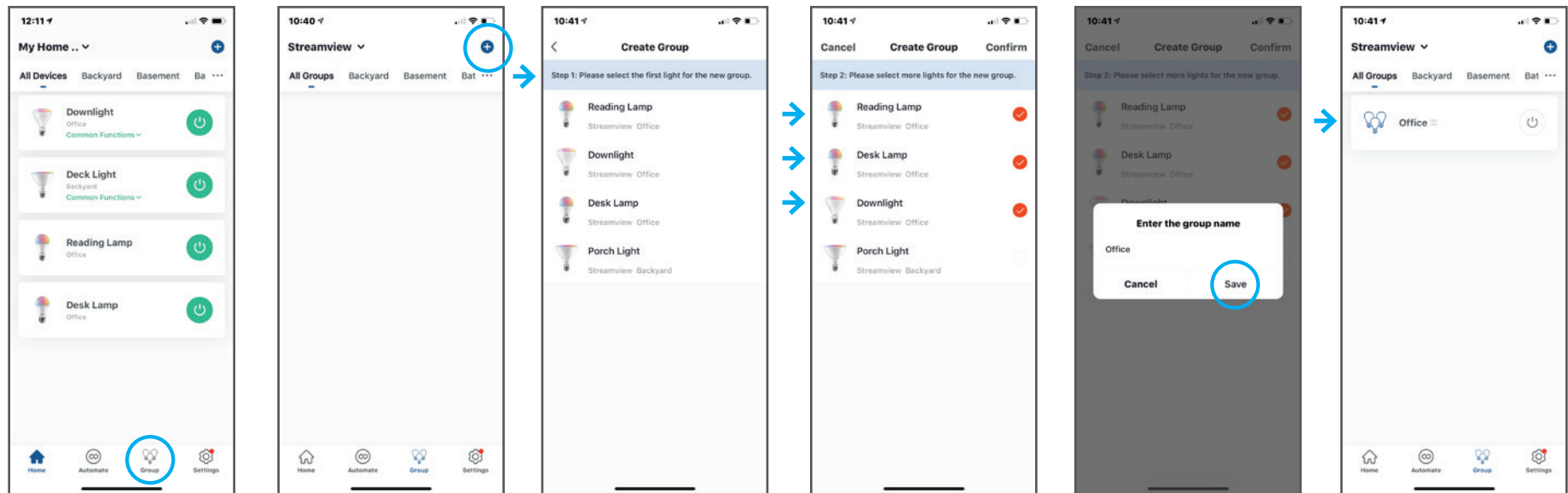


Groups

Combine multiple bulbs into a group for simple, seamless control of multiple bulbs at one time. Ideal for rooms with multiple fixtures and lamps you want to control together, or a fan with multiple bulbs together.

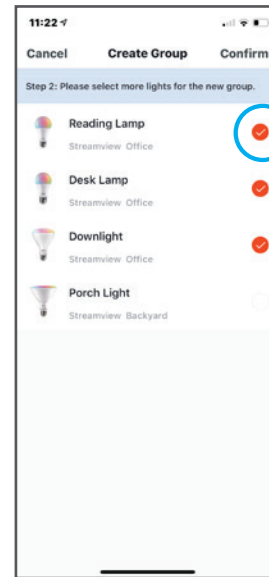
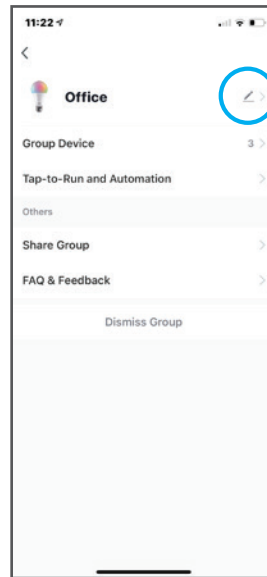
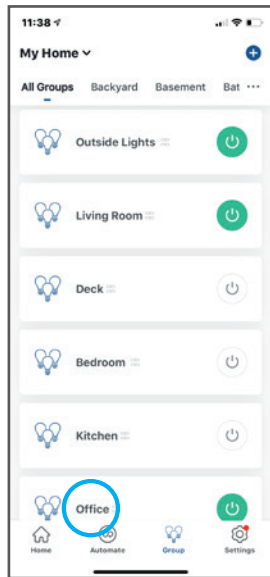
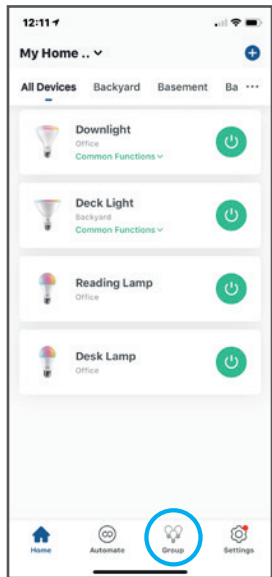
Create Groups

- 1 From the home screen, tap on Group in the bottom toolbar
- 2 Tap on the + icon in the upper right-hand corner
- 3 Select the first bulb you want for the group
- 4 Select all the additional bulbs you want to add to the group. Tap confirm when done.
- 5 Enter the group name. Tap Save.
- 6 Groups will now appear on the Group page



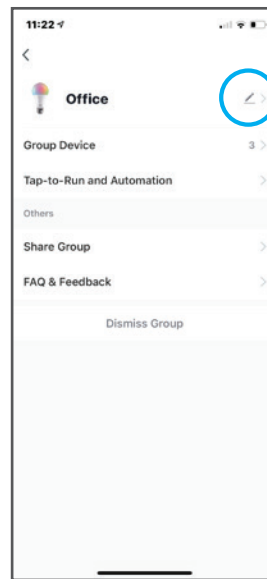
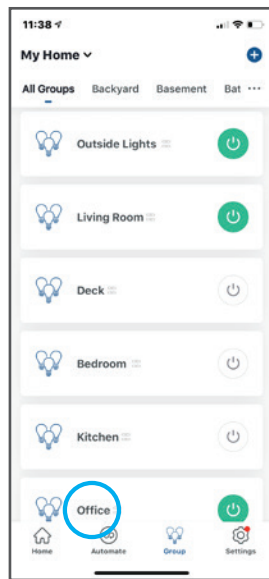
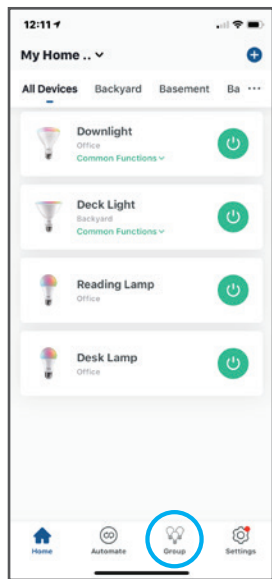
Edit Groups

- 1 From the home screen, tap on Group in the bottom toolbar
- 2 Tap the group you want to edit
- 3 Tap the pencil icon in the upper right-hand corner.
- 4 Tap Group Device to add/remove bulbs to that group. Tap confirm when done.



Delete Groups

- 1 From the home screen, tap on Group in the bottom toolbar
- 2 Tap the group you want to edit
- 3 Tap the pencil icon in the upper right-hand corner
- 4 Tap Dismiss Group. Tap confirm



Controlling Groups

You can control groups in the same way you can control individual bulbs. On the Home Screen, tap Group in the bottom toolbar.

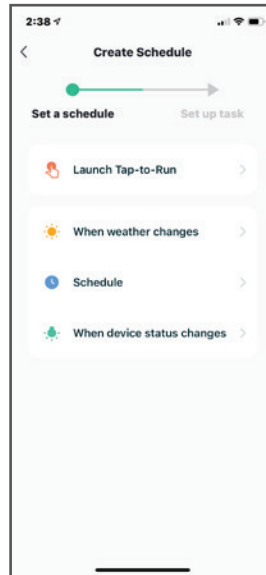
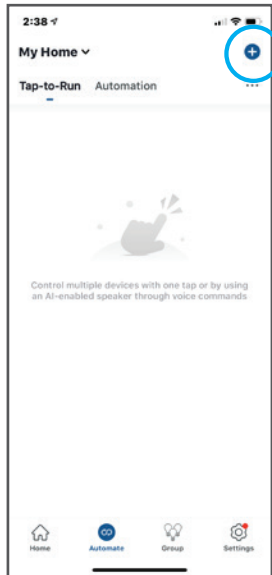
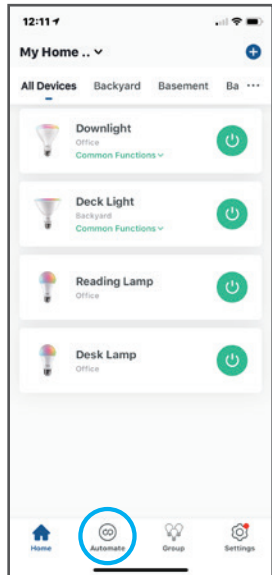
From here you can turn a group on or off, or by tapping the group name you can open the group control panel to adjust dim, adjust color temperature, choose color or create schedule.

NOTE: Timer and Follow the Sun routines are not currently active for groups. This feature will be available in the future. To coordinate multiple bulbs in a room to all Follow the Sun together, you must configure each bulb individually.

Automate

Set up actions that occur automatically, triggered by other events, such as weather or device status changes. You can also add to Siri to trigger automation with your voice on Apple devices.

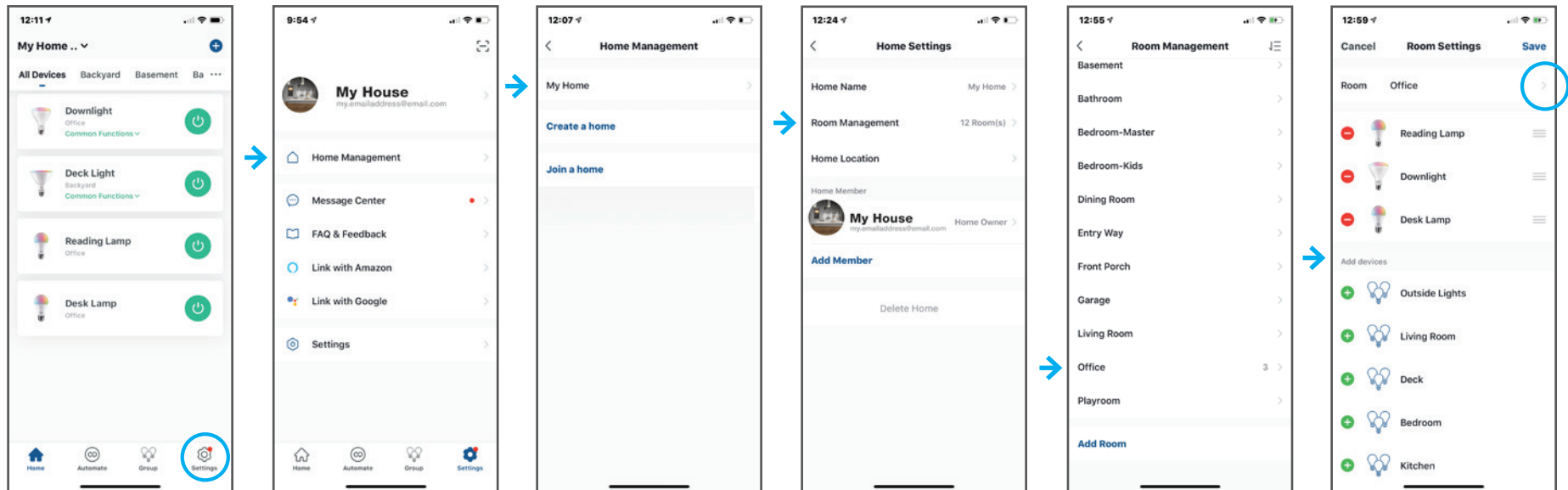
- 1 From the Home Screen tap on Automate in the bottom toolbar
- 2 Tap on the + icon in the upper right-hand corner
- 3 Tap on condition you want to automate (i.e. weather, schedule, status change)



Home Management

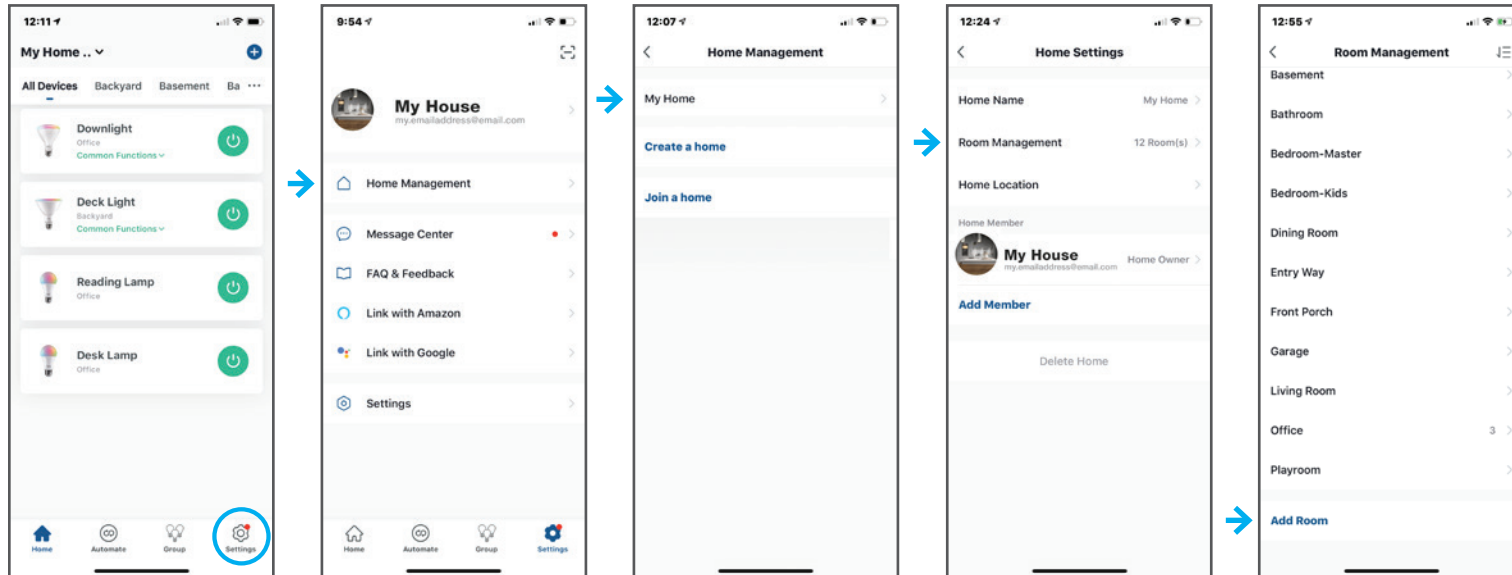
Edit Existing Rooms

- 1 From the home screen, tap on Settings in the bottom toolbar
- 2 Tap on Home Management
- 3 Tap on My Home
- 4 Tap on Room Management
- 5 Tap on the room you want to edit
- 6 From here, you can edit the name of the room, as well as add/remove bulbs from that room. Tap Save when done.



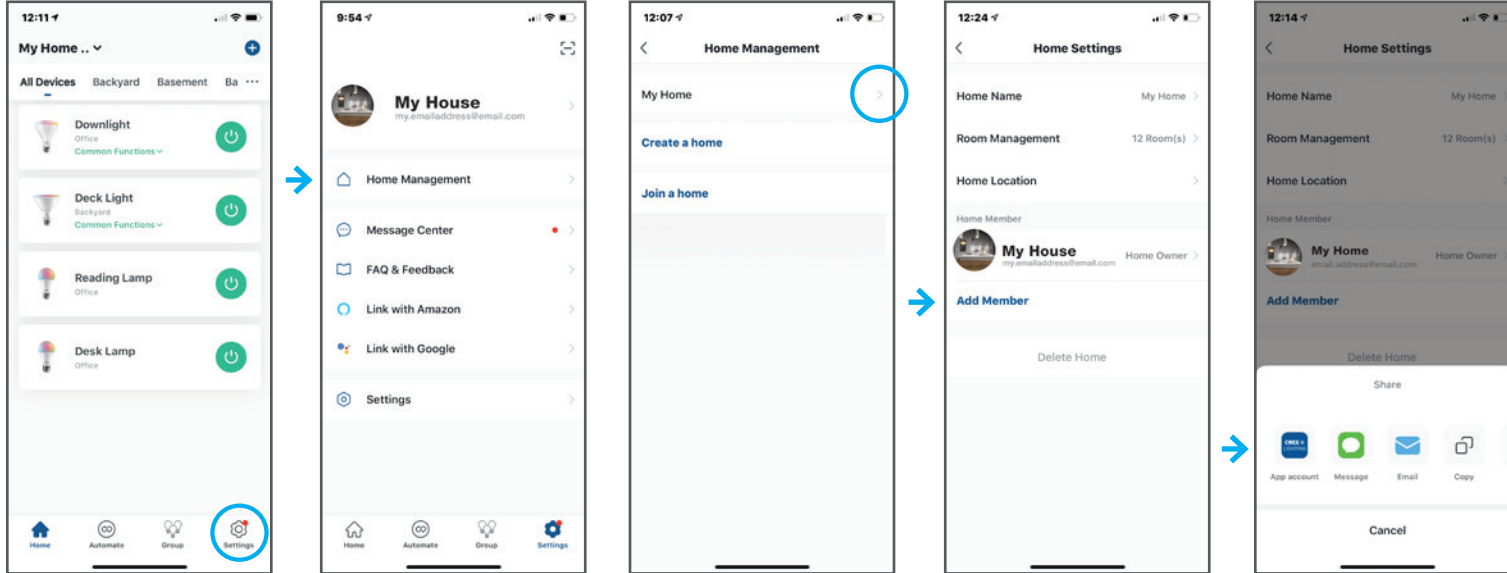
Add New Rooms

- 1 From the home screen, tap on Settings in the bottom toolbar
- 2 Tap on Home Management
- 3 Tap on My Home
- 4 Tap on Room Management
- 5 Tap Add Room
Type in the name of the new room. Tap Save when done.



Device Share

- 1 From the home screen, tap on Settings in the bottom toolbar
- 2 Tap on Home Management
- 3 Tap on My Home
- 4 Under Home Member, tap on Add Member
- 5 Tap to share via app or SMS message [Note: New members must set up an account before sharing]



Need more help?

Visit our video channel for help:

video url/link goes here

Having trouble with your wireless router configuration?

See our [guide to wireless routers](http://bit.ly/3lyZ5oc) at: <http://bit.ly/3lyZ5oc>

Call Cree Lighting Customer Service at 1-866-924-3645, ext. 1

Please have the following information ready for your call:

- WiFi service provider name
- Router Make and Model number
- Router configuration access web address or IP address
- Your current WiFi network name and password. (The Cree Lighting Customer Service will not ask for your password, but you may need it to adjust your WiFi settings.)