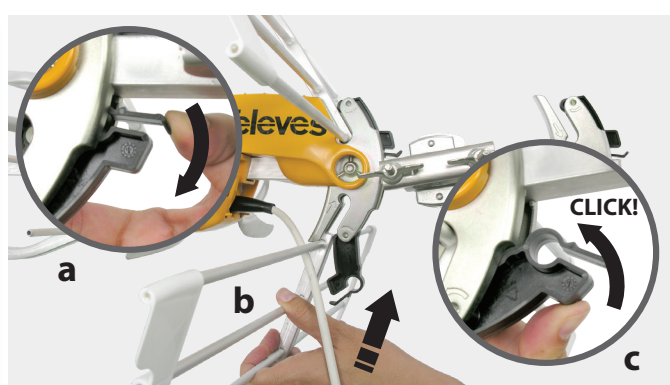
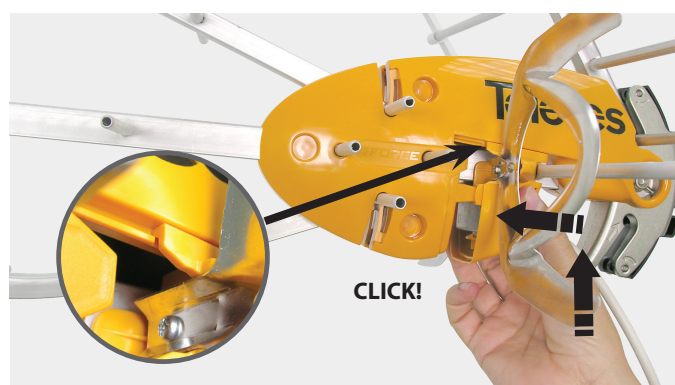
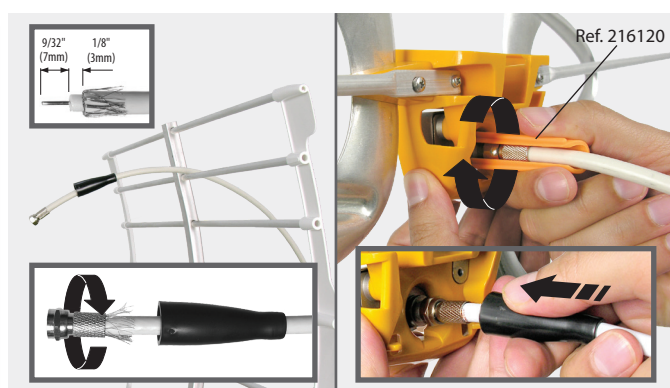
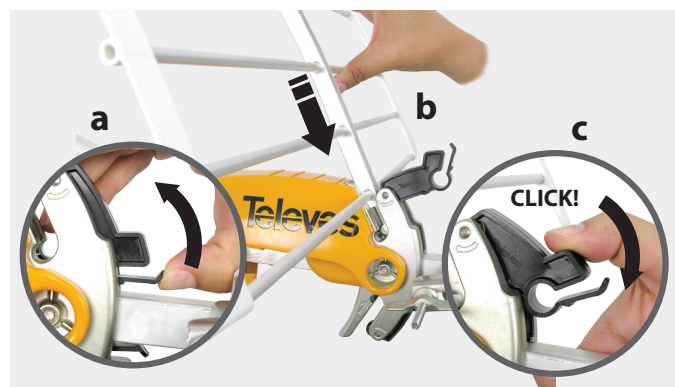
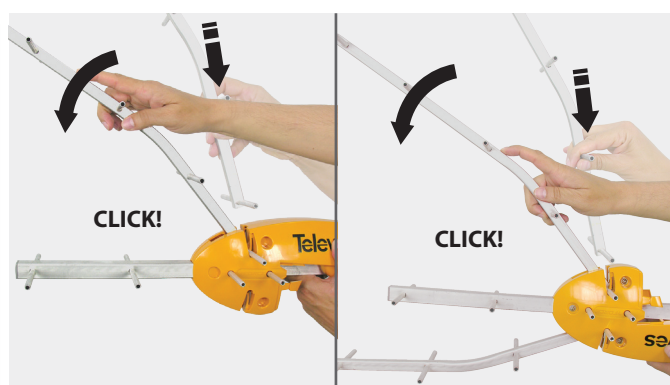
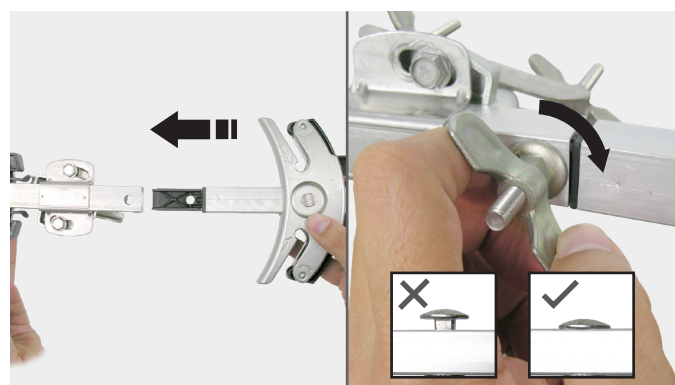
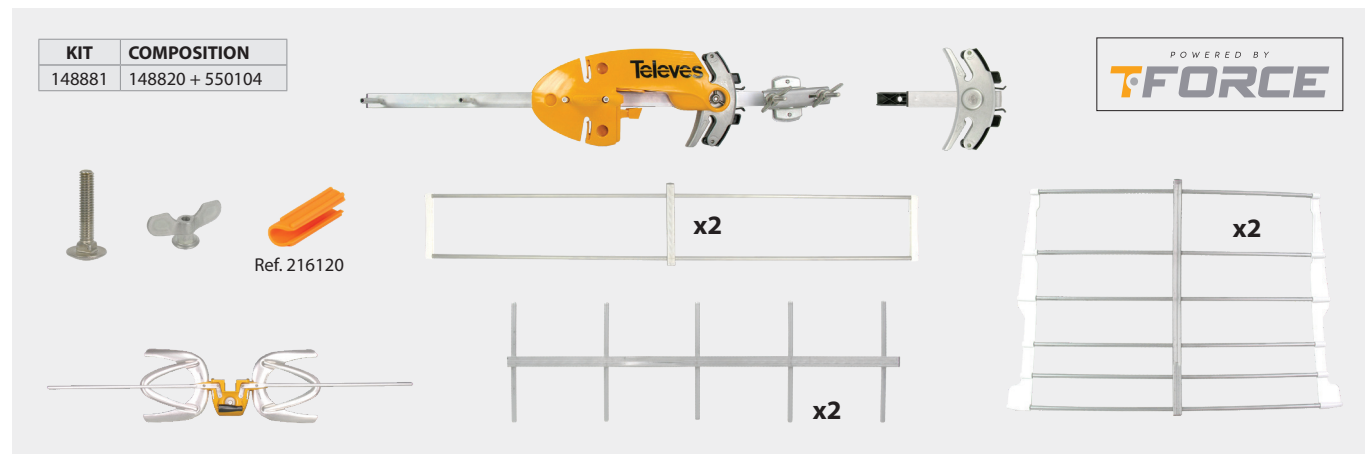


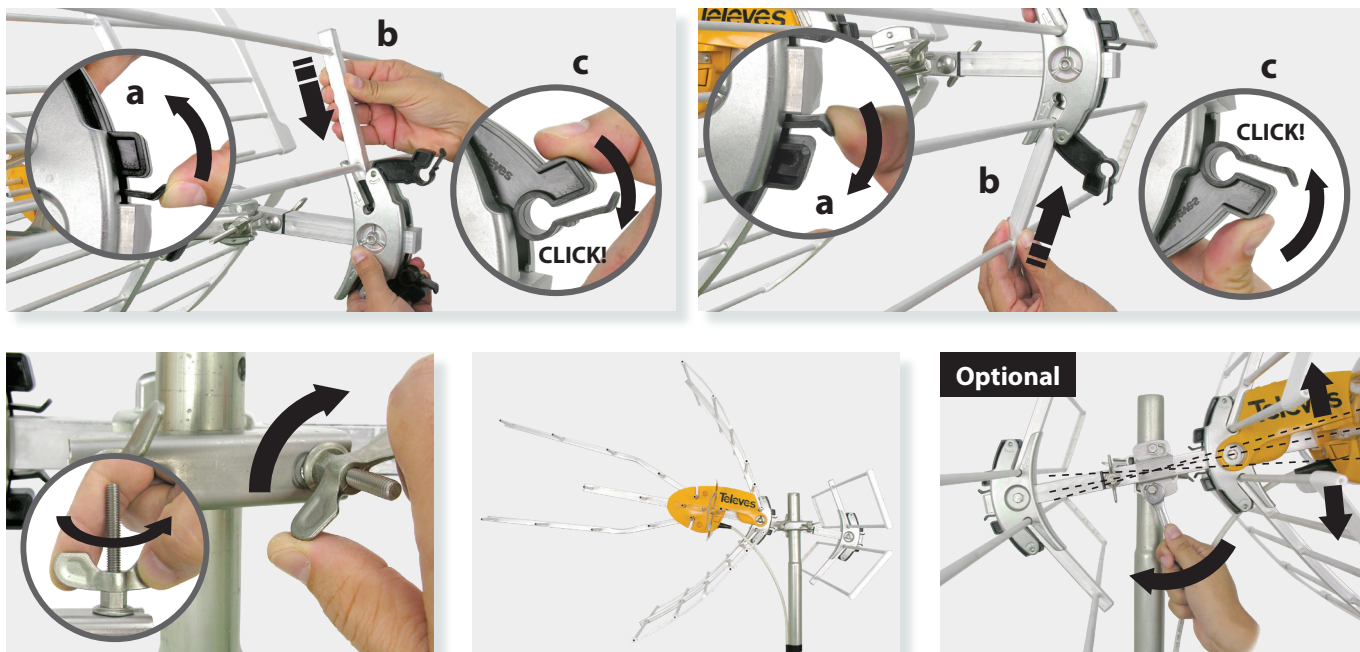
Antenna / Antena

Ref. 148820

Kit: 148881

Ellipse® MIX





Safety Instructions:

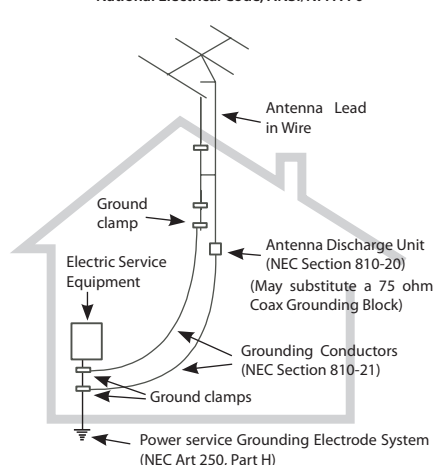
LIGHTNING PROTECTION

- ◆ If installed outdoors, be sure the antenna system is grounded so as to provide protection against voltage surges and built-up static charges. Section 810 of the National Electrical Code ANSI/NFPA70, or CSA C22.1 sections 10, 16, and 54, of the Canadian Electrical Code, provide information with respect to proper grounding of the mast and supporting structure, grounding of the antenna lead-in wire to an antenna discharge unit, size of grounding conductors, location of antenna-discharge unit, connection to grounding electrodes, and requirements for the grounding electrode (see figure and instructions).
- ◆ Mount the lightning arrestor or 75 ohm coaxial grounding block as close as possible to where the 75 ohm coaxial cable download enters the house.
- ◆ The ground wires for both the mast and the download should be copper or aluminum wire, number eight (8) or larger.
- ◆ The download wire from the antenna to the lightning arrestor and the mast ground wire should be secured to the house, spaced from four (4) to six (6) feet apart.
- ◆ In the case of a "ground up" antenna installation it may not be necessary to ground the mast if the mast extends four or more feet in the earth. Consult a TV serviceman for the proper depth in your location.

WARNINGS

- ◆ To prevent fire or shock hazard, do not expose the included power supply to rain or moisture.
- ◆ Installation of off-air antennas near power lines is dangerous. For your safety, follow the installation instructions.
- ◆ Any alteration or modification to the product or usage not in accordance with product instructions voids the warranty.

Example of antenna grounding as per National Electrical Code, ANSI/NFPA 70



NEC - National Electrical Code

Technical specifications of the intelligent antenna (it must be powered) / Características técnicas de la antena inteligente (debe estar alimentada)

Ref.	Ref.	148820	
Working band	Banda de trabajo	MHz	174 - 216 (CH7 - CH13) 470 - 698 (CH14 - CH51)
Mode	Modo	INTELLIGENT (BOSS ON)	
Gain	Ganancia	dBi	36.5 40
Output level	Nivel de salida	Auto ⁽¹⁾	
Noise figure	Figura de ruido	dB	2.5 (typ)
Signal level of use (recomm.)	Nivel de señal de uso (recomend.)	dBμV	< 75
Powering voltage	Tensión aliment.	V=	12-24
Consumpt.	Consumo	mA	40 (max)
Beamwidth	Ancho de haz	°	30
F/B ratio	Relación D/A	dB	>20
Wind load	Carga al viento	N	96 (@ 80 mph) 132 (@ 93 mph)

⁽¹⁾ - The gain is automatically adjusted according to the output level.
- La ganancia varía automáticamente en función del nivel de salida.

