

### IMPORTANT SAFEGUARDS

When using electrical equipment, basic safety precautions should always be followed including the following:

### READ AND FOLLOW ALL SAFETY INSTRUCTIONS

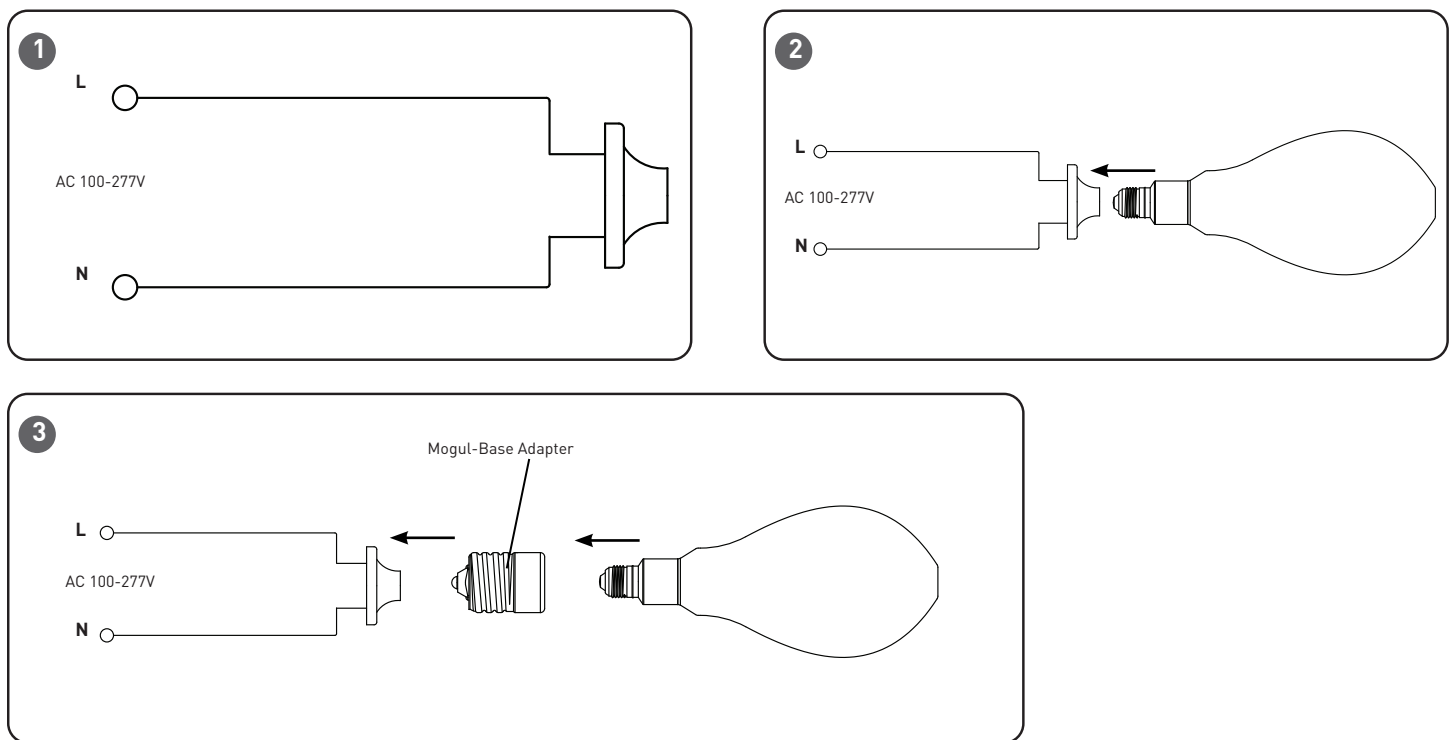
1. **DANGER – RISK OF SHOCK – DISCONNECT POWER BEFORE INSTALLATION**  
DANGER – RISQUE DE CHOC – COUPER L'ALIMENTATION AVANT L'INSTALLATION
2. **WARNING – Risk of fire or electric shock. HID LED Replacement installation requires knowledge of luminaires electrical systems. If not qualified, do not attempt installation. Product must be installed in accordance with NEC or your local electrical code. If you are not familiar with these codes and requirements, contact a qualified electrician.**
3. **ATTENTION- Risque d'incendie ou de choc électrique. L'installation du kit upgrade LED exige la connaissance des systèmes électriques pour luminaires. Si non qualifié, ne tentez pas d'installation. Ce produit doit être installé conformément à NEC ou votre code électrique local. Si vous n'êtes pas familier avec ces codes et ces exigences, veuillez contacter un électricien qualifié.**  
*Ce produit doit être installé conformément à NEC ou votre code électrique local. Si vous n'êtes pas familier avec ces codes et ces exigences, veuillez contacter un électricien qualifié.*
4. **WARNING – Risk of fire or electric shock. Check the existing wiring, lampholders and all parts that are not intended to be replaced by the HID LED replacement for damage before installing. Do not install if existing wires are damaged.**
5. **WARNING – To prevent wiring damage or abrasion, do not expose wires to the edge of sheet metal or any other sharp objects.**  
ATTENTION - Pour éviter les dégâts de câblage par l'abrasion, ne pas mettre en contact les fils électriques avec des bords de tôle ou d'autres objets pointus.
6. **WARNING – Risk of fire or electric shock. Install this kit only in the luminaires that have the construction features and dimensions shown in the photographs and/or drawings and where the input rating of the lamp does not exceed the input rating of the luminaire.**  
ATTENTION - Risque d'incendie ou de choc électrique. Installez ce kit seulement dans les luminaires qui ont les caractéristiques de construction et les dimensions dans les photographies ou les dessins de la page suivante.
7. Do not make or alter any open holes in an enclosure of wiring or electrical components during kit installation.
8. This device is not intended for use with emergency exits.
9. The luminaire wiring has now been modified and will no longer operate High Pressure Sodium or Metal Halide lamps.
10. NOT FOR USE WITH DIMMERS.
11. Suitable for damp locations.
12. Suitable for use on 120-277 volt AC circuits when using with included E39 mogul base adapter.
13. This device employs non-replaceable light sources. Do not open – no user serviceable parts inside. Do not use if product is cracked, broken or missing pieces, even if lamp continues to light.
14. Do not look directly into the light.
15. The device has been evaluated for use in surface mount wall or ceiling luminaires, and portable luminaires.
16. Added weight of the device may cause instability of a free-standing portable luminaire. Use in portable table lamps in which the distance from the bottom of the base to the top of the lampholder does not exceed three (3) times the minimum base diameter.
17. Model 28W - ED37-50L-850-UNV-MOGE26 has been evaluated for use in totally enclosed, recessed luminaires.  
Model 36W - ED37-60L-850-UNV-MOGE26 and 43W - ED37-75L-850-UNV-MOGE26, USE IN OPEN LUMINAIRE ONLY.

### SAVE THESE INSTRUCTIONS FOR FUTURE REFERENCE

#### NOTES:

- This item is rated at 120-277V. Installer must determine whether line voltage 120-277V is available at the luminaire before installation.

## TO INSTALL:



### INSTALLATION USING E26 MEDIUM-BASE

When using in a medium base socket, follow instructions below. Screw in the bulb and you get the most light for the most common sockets in your home.

**NOTE:** Ensure fixture has input voltage between 120 and 277 volts.

**NOTE:** Make sure POWER IS TURNED OFF AT THE SOURCE. Do not simply switch off fixture.

#### STEP 1:

Turn off power at source. Do not simply switch off the fixture

#### STEP 2:

Remove existing covers from the light fixtures according to the light fixture manufacturer's instructions. Apply the sticker label provided in the box that states, "This luminaire is retrofitted to accept Cree Lighting LED HID Replacement 120-277V,60HZ, Only" to the inside of the fixture.

#### STEP 3:

Carefully remove the existing lamp and dispose of it according to federal, state and local laws.

#### STEP 4:

If there is a ballast, cut off wires connected to ballast, and remove ballast (and starter if present). Dispose of removed ballast according to federal, state and local laws. See **Figure 1**.

#### STEP 5:

Make sure to connect the line (L) and neutral (N) wires to the corresponding ends of the socket.

#### STEP 6:

Screw the E26 base of the bulb into the standard E26 medium base socket. See **Figure 2**.

#### STEP 7:

Turn power back on at the source.

### INSTALLATION USING E39 MOGUL-BASE ADAPTOR

When using in a mogul base socket, you must remove the existing ballast in the fixture to install directly into a 120-277V line.

**NOTE:** Ensure fixture has input voltage between 120 and 277 volts.

**NOTE:** Make sure POWER IS TURNED OFF AT THE SOURCE. Do not simply switch off fixture.

#### STEP 1:

Turn off power at source. Do not simply switch off the fixture

#### STEP 2:

Remove existing covers from the light fixtures according to the light fixture manufacturer's instructions. Apply the sticker label provided in the box that states, "This luminaire is retrofitted to accept Cree Lighting LED HID Replacement 120-277V,60HZ, Only" to the

inside of the fixture.

#### STEP 3:

Carefully remove the existing lamp and dispose of it according to federal, state and local laws.

#### STEP 4:

Cut off wires connected to ballast, and remove ballast (and starter if present). Dispose of removed ballast according to federal, state and local laws. See **Figure 1**.

#### STEP 5:

Make sure to connect the line (L) and neutral (N) wires to the corresponding ends of the socket.

#### STEP 6:

Remove E39 mogul-Base adapter from the box, screw the E26 medium base of the bulb clockwise into the E39 mogul-base adapter. See **Figure 3**.

#### STEP 7:

With the adapter now connected to the bulb, screw the E39 base of the adapter into the E39 mogul base socket. See **Figure 3**.

#### STEP 8:

Turn power back on at the source.