

INSTALLATION INSTRUCTIONS

Item#5696-782

READ AND SAVE THESE INSTRUCTIONS

WARNING! SHUT POWER OFF AT FUSE OR CIRCUIT BREAKER.
AVERTISSEMENT! COUPER LE COURANT AU NIVEAU DES FUSIBLES OU DU DISJONCTEUR.

1. Shut off power at the fuse box or circuit breaker box and remove the old fixture including the mounting hardware.
2. Carefully unpack your new fixture and lay out all the parts in a clean area. Take care not to misplace any small parts necessary for installation.

ASSEMBLING THE FIXTURE (Fig.1)

3. The arms have been placed to lay flat for shipping. Adjust arms to proper position.
4. Thread the nipple 2 (N) on to the bottom of the fixture body (L), raise the flat cover (O) and cup (P) over the nipple 2 (N), secure with finial (Q).
5. Secure column rod (K) onto coupling of fixture body (L) and secure rod with fixture loop (J) onto coupling at the top of column rod (K).
6. Determine the desire hanging height to remove the excess chain link from chain (I). Attach the quick link (H) to one end link of chain (I) and attach the quick link (H) to the fixture loop of rod (J). Note: The quick link (H) must be fully closed.
7. Thread the fixture wire and bare copper ground wire up through every other link in the chain (I).
8. Install crossbar (A) with nipple 1 (D), lock nut (M) and screw collar loop (F) to the junction box using two junction box screws (B). The side of crossbar (A) marked "GND" must face out. The length of nipple 1 (D) into crossbar (A) maybe adjusted if necessary. Then tighten with lock nuts (M) provided.
9. Slip screw collar ring (G), follow up by canopy (C) and allow them to rest on fixture loop of rod (J). Attach another quick link (H) to another end of chain (I). Fasten the end link of quick link(H) to the screw collar loop (F). Note: The quick link (H) must be fully closed. Insert the fixture wires to up through the nipple 1 (D).

CONNECTING THE WIRES (Fig. 2)

10. Connect electrical wires as shown in Fig.2, making sure that all wire connectors are secured. If your junction box has a ground wire (green or bare copper), connect the fixture's ground wire to it. Otherwise, connect the ground wire directly to the crossbar (A) using the green screw (E) provided.
11. Tuck wire connectors neatly into the junction box.

COMPLETING THE INSTALLATION (Fig. 1)

12. Raise the canopy (C) to the ceiling and secure in place by screwing the screw collar ring (G) onto the screw collar loop (F).
13. Install (6) six candelabra base bulbs (R) up to 60 watts each or CFL or LED equivalent (not included) in accordance with the fixture specification.

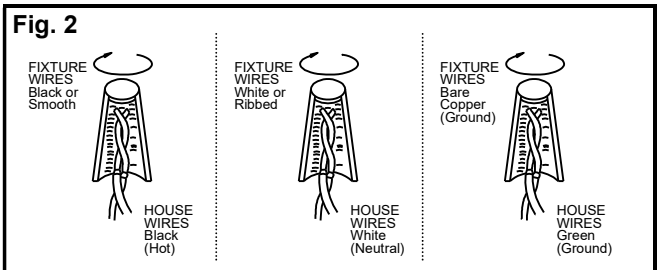
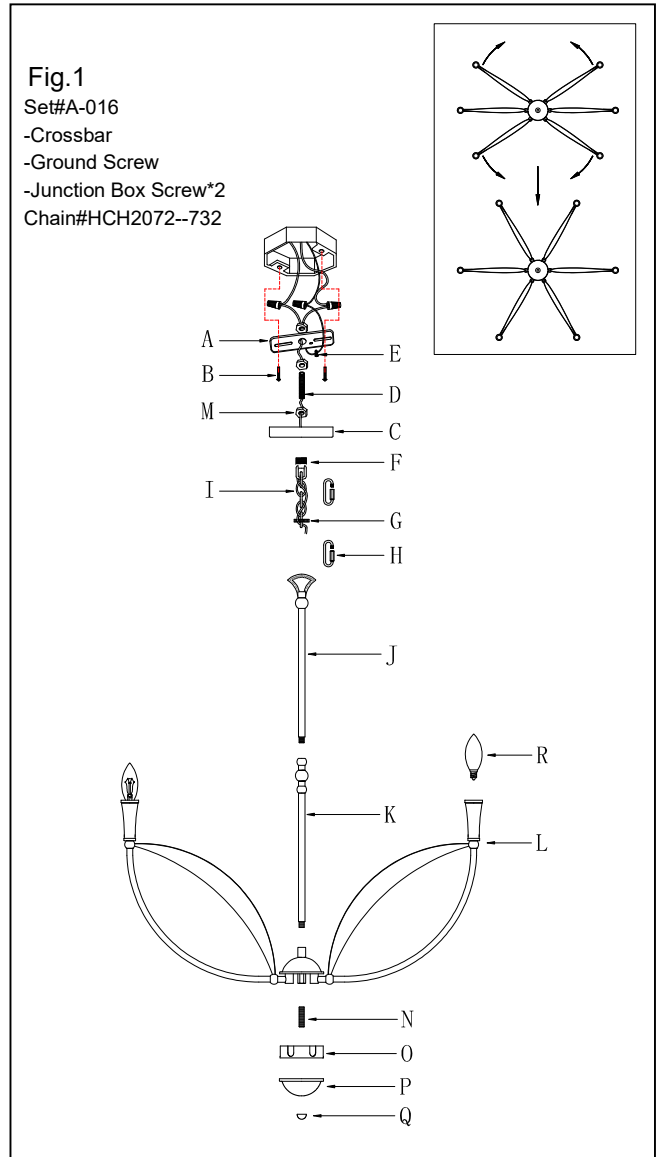
—DO NOT EXCEED THE MAXIMUM WATTAGE RATING! (NE PAS DEPASSER LA PUISSANCE NOMINALE MAXIMALE!)

Your installation is now complete. Return power to the junction box and test the fixture.

Note: Illustration (Fig. 1) on this manual is for installation purposes only.

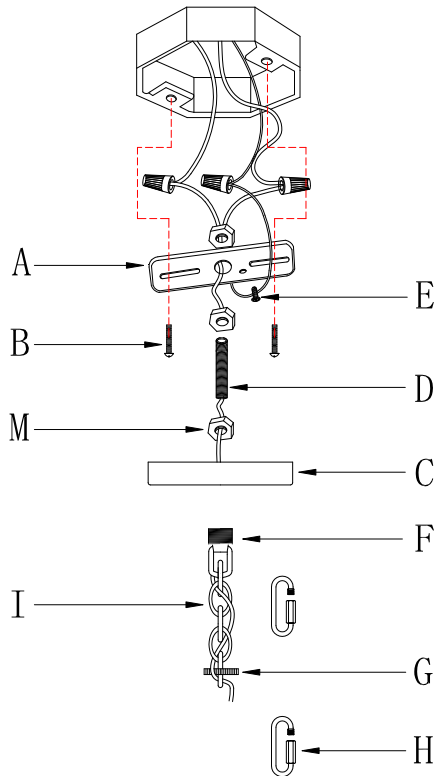
It may or may not be identical to the fixture purchased.

IMPORTANT: FIXTURE SHOULD BE INSTALLED BY A QUALIFIED ELECTRICIAN TO ENSURE PROPER WIRING AND INSTALLATION.



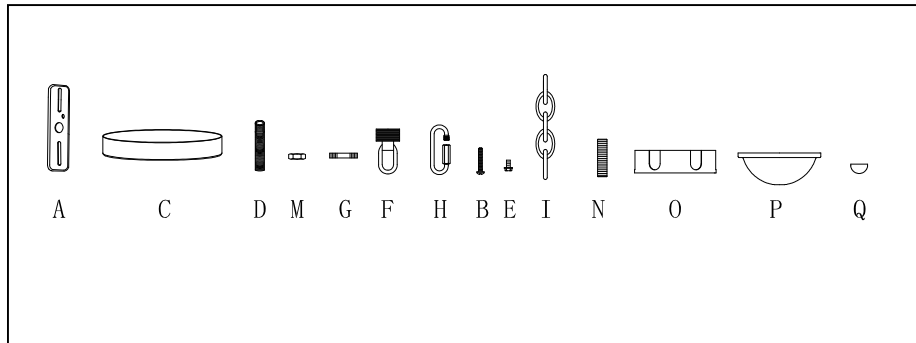
Notice: It is important to use proper chain pliers (not included)
 To OPEN and CLOSE the chain included with this fixture. Do not open
 them with other tools that may twist or stress the chain links. It is
 important to use proper chain pliers like the ones shown in the diagram.

Fig.3



a. Hardware Bag:

- A. Crossbar*1
- B. Junction Box Screw*2
- C. Canopy *1
- D. Nipple 1*1
- E. Ground screw*1
- F. Screw collar loop*1
- G. Screw collar ring*1
- H. Quick Link*2
- I. Chain*1
- M. Lock nut*3
- O. Flat cover*1
- N. Nipple 2*1
- P. Cup *1
- Q. Finial*1



b. Hardware Bag:

- J. Rod with fixture loop
- K. Column rod

