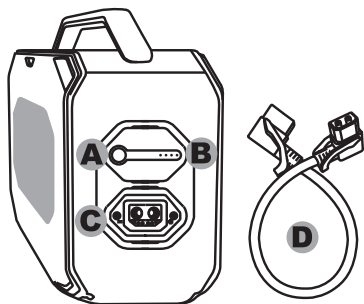




Extension Pack User Guide

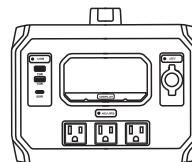
MANUALS
EN ESPAÑOL / ET FRANÇAIS
ColemanPowerStations.com

Product Details (All Models)

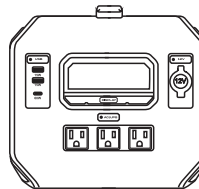


- A. Fuel Gauge Button
- B. LED Fuel Gauge
- C. Extension Port
- D. 24" Extension Pack Power Cord

Works With (sold separately):



Battery Generator **500G2**



Battery Generator **750**
Battery Generator **1000**
Battery Generator **1500**

What is the Extension Pack?

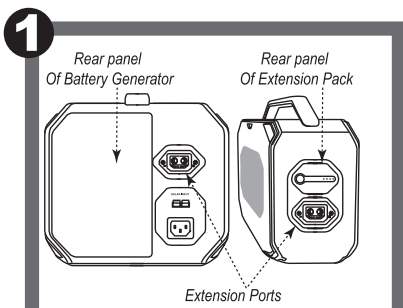
The Extension Pack is an external battery pack which provides extended run time for your Battery Generator. When you need more battery capacity, simply connect the Extension Pack.

Connecting And Charging Your Extension Pack

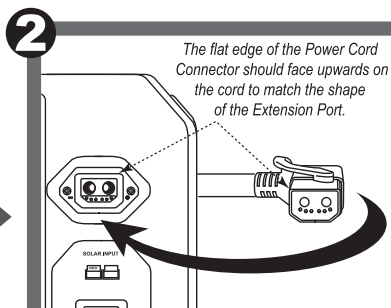
The Extension Pack Power Cord that is included with your Extension Pack creates a two-way power connection, allowing the Extension Pack to supply backup battery power to the Battery Generator, and also allows the Battery Generator to recharge the Extension Pack.

IMPORTANT: Please use **ONLY** the included Extension Pack Power Cord to connect your Battery Generator and Extension Pack. Using another power cord may cause personal injury or cause damage to your Battery Generator, Extension Pack, damage any connected items, and void your warranty.

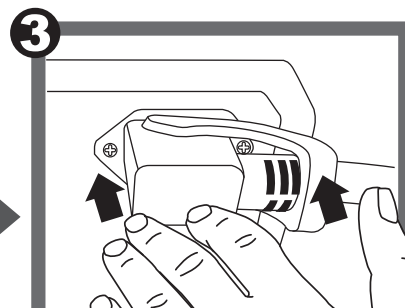
IMPORTANT: Please make sure the connector ends of your Power Cord are free of dust, dirt, moisture and debris to avoid shorting out the Battery Generator and/or Extension Pack before connecting. Please store your Power Cord in a clean, dry place when is not in use to keep it free from contamination.



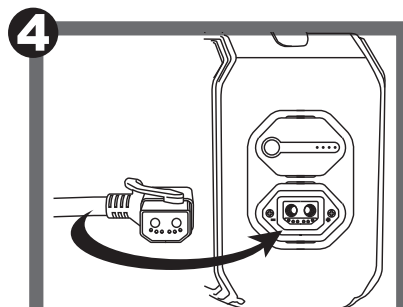
Place the Battery Generator next to the Extension Pack on a clean, dry flat surface. The rear panels of the Battery Generator and the Extension Pack should face towards you.



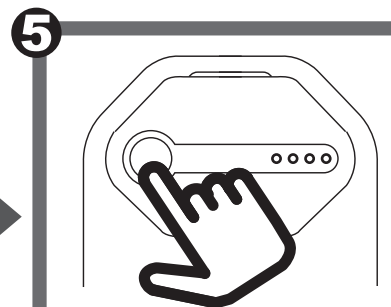
Flip up the protective cover over the Extension Port. Connect one end of the Extension Pack Power Cord to the Extension Port, making sure that the cord and port are properly aligned.



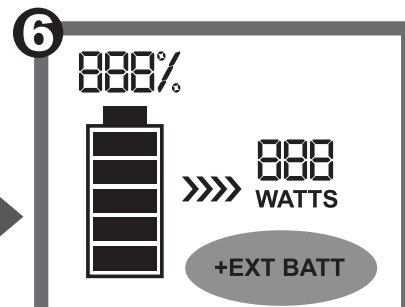
Press firmly on the Power Cord to ensure a secure connection with the Extension Port of the Battery Generator.



Repeat Steps 2-3 above to connect the other end of the Power Cord to the Extension Pack.



Press fuel gauge button to check battery level or charge status.



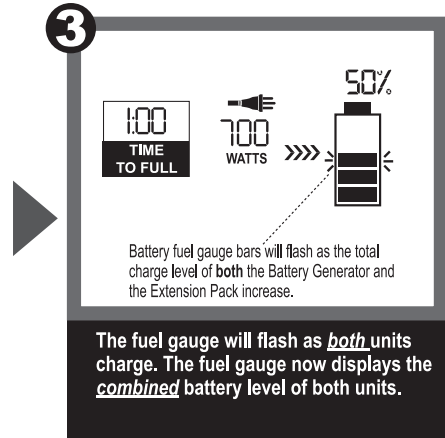
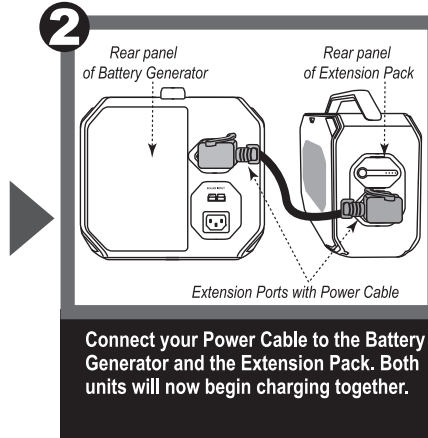
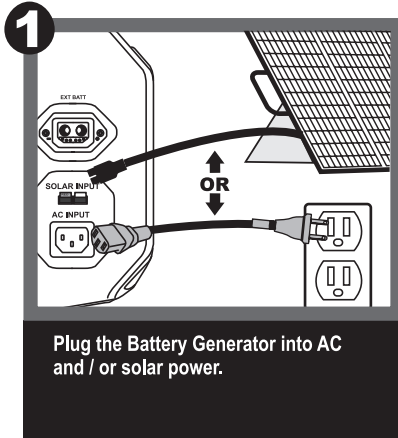
You will see the "EXT BATT" icon on the Battery Generator's Intelligent LCD Screen; the fuel gauge now displays the combined battery level of both units.

Getting Started (cont'd)

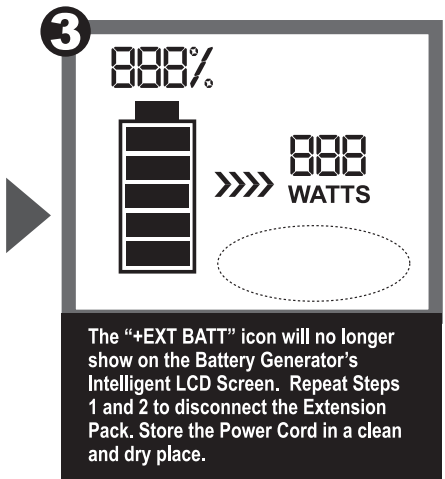
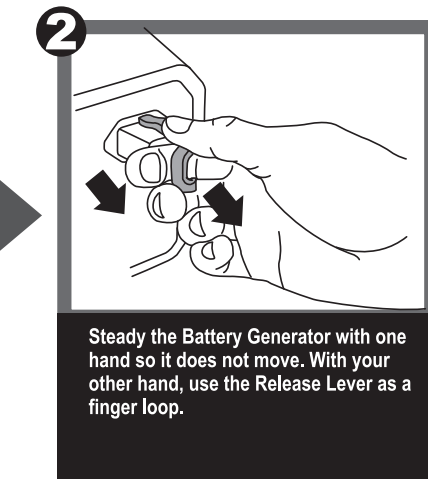
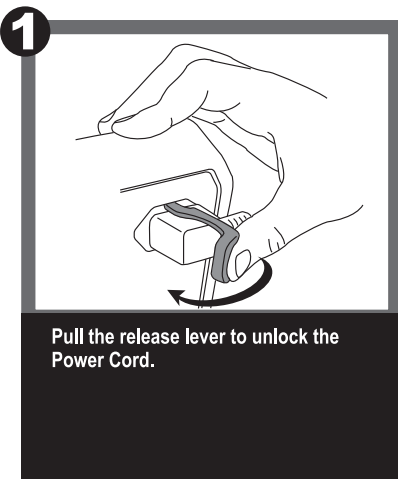
Charging Your Extension Pack

! The Extension Pack cannot be charged separately; it is designed to connect to the Battery Generator unit to charge and recharge.

! IMPORTANT: Please ensure that the Battery Generator is connected to either AC or solar power while it is charging the Extension Pack to avoid depleting the Battery Generator's own battery.



Disconnecting Your Extension Pack



Reference

Household Items: Approximate Run Times

Device	Continuous draw (Watts)	Run Time (Battery Generator + Extension Pack)			
		500G2	750	1000	1500
LED string lights	3.3W	420 hours	505 hours	560 hours	730 hours
LED light bulb (100 W Equivalent)	14W	90 hours	112 hours	120 hours	165 hours
LED Light bulb (60 W Equivalent)	8W	150 hours	160 hours	200 hours	220 hours
Incandescent light bulb	59W	21 hours	26 hours	28 hours	39 hours
CPAP	53W	48 hours	55 hours	64 hours	79 hours
TV (42" LED)	48W	24 hours	28 hours	32 hours	49 hours
Cable modem + Wi-Fi router	13W	90 hours	105 hours	120 hours	150 hours
Table fan	53W	25 hours	29 hours	34 hours	41 hours
Bar fridge (1.7 cu ft)	~50W	24 hours	28 hours	32 hours	40 hours
Dorm fridge/Mini fridge (3.7 cu ft)	~40W	30 hours	35 hours	40 hours	50 hours
Full size refrigerator (18 cu ft)	30W	27 hours	31 hours	36 hours	45 hours
Large size refrigerator (28 cu ft)	140W	9 hours	10 hours	12 hours	14 hours
Ice maker	90W	13.5 hours	16 hours	18 hours	23 hours
Coffee maker	900W	—	—	5 pots	7 pots
Blender	212W	5.5 hours	6.5 hours	7 hours	9.5 hours
Electric hot plate (single)	852W	—	—	2.4 hours	2.8 hours
Sump pump (1/4HP)	250W	4.5 hours	5 hours	6 hours	7.5 hours
Laptop	51Wh Battery	21 charges	24 charges	28 charges	35 charges
Smartphone	11Wh Battery	105 charges	120 charges	140 charges	175 charges

Important Note:

The power draw and run times of these household items are examples only and actual results may vary.

Important Note:

High power draw devices such as air conditioners, space heaters, rice cookers, hot plates, circular saws, and large sump pumps (over 1/4 hp) may result in shorter run times. Refer to the Specification Table for output power ratings.

Safety Information

This section contains important safety information. Before using the product, READ ALL instructions and cautionary markings on or provided with the product, and all appropriate sections of this guide. The product contains no user-serviceable parts. SAVE THESE INSTRUCTIONS.

⚠ IMPORTANT SAFETY INSTRUCTIONS - SAVE THESE INSTRUCTIONS

- ⚠ WARNING –** When using this product, basic precautions should always be followed, including the following:
- a) Read all the instructions before using the product.
 - b) To reduce the risk of injury, close supervision is necessary when the product is used near children.
 - c) Do not put fingers or hands into the product.
 - d) Do not expose your Battery Generator or Extension Pack to rain or snow.
 - e) Use of an attachment not recommended or sold by Battery Generator manufacturer may result in a risk of fire, electric shock, or injury to persons.
 - f) To reduce risk of damage to the electric plug and cord, pull the plug rather than the cord when disconnecting the Battery Generator or Extension Pack.
 - g) Do not use a Battery Generator, Extension Pack or appliance that is damaged or modified. A damaged or modified Battery Generator or Extension Pack may exhibit unpredictable behavior resulting in fire, explosion or risk of injury.
 - h) Do not operate the Battery Generator or Extension Pack with a damaged cord or plug, or a damaged output cable.
 - i) Do not disassemble the Battery Generator or Extension Pack; take it to a qualified service person when service or repair is required. Incorrect reassembly may result in a risk of fire or electric shock.
 - j) To reduce the risk of electric shock, unplug the Battery Generator and Extension Pack from the outlet before attempting any instructed servicing.

PERSONAL PRECAUTIONS

- a) When charging the internal battery, work in a well ventilated area and do not restrict ventilation in any way.
- b) Do not expose a Battery Generator or Extension Pack to fire or excessive temperature. Exposure to fire or temperature above 130°C / 266°F may cause explosion.

- ⚠ WARNING: NO USER SERVICEABLE PARTS**
- There are no user serviceable parts in this unit, DO NOT attempt to open the Battery Generator or Extension Pack; this is dangerous and will void the warranty.

- ⚠ WARNING: HEAT GENERATION DURING CHARGING AND USE**
- Charging and discharging generates heat and requires proper air flow. Use in a ventilated area and ensure adequate clearance for the ventilation grills. Blocking the grills may cause overheating and damage to the unit.

- ⚠ WARNING: RISK OF ELECTRIC SHOCK INJURY**
- Do not operate or store in moist conditions to avoid electric shock.
 - If the unit gets wet wait for it to dry completely before using it.
 - Do not insert foreign objects into any of the ports or openings.

- ⚠ WARNING: RISK OF ELECTRIC SHOCK OR FIRE HAZARD**
- Review the specifications of the Battery Generator and Extension Pack ports and all connected devices you intend to use.
 - The output ports can generate dangerous voltages.
 - Do not use the Battery Generator or Extension Pack if it is damaged or any of the input or output cords are damaged.

Product Specifications

Battery	
Chemistry	Lithium-Ion
Nominal Voltage	25.8V DC
Typical Capacity	38.4Ah / 991Wh
DC Output	
Power Output	25.8V—80A Max

Operating Temperatures	
Charging	0° – 45° C / 32° – 113° F
Discharging (in use)	-10° – 45° C / 14° – 113° F
Certifications	
Safety	ANSI/CAN/UL62133-2
Efficiency	CEC/NRcan/DOE
EMI	FCC Part 15

Dimensions and Weight	
Dimensions (LxWxH)	30.5 x 11.8 x 22.7 cm/ 12 x 4.6 x 8.9 in
Weight (kg/lb)	6.0 kg / 13.2 lb

Support and Warranty

FCC / ISED Information

This device complies with part 15 of FCC Rules. Operation is subject to the following two conditions: (1) This device may not cause harmful interference, and (2) this device must accept any interference received, including interference that may cause undesired operation.

Changes or modifications not expressly approved by the party responsible for compliance could void the user's authority to operate the equipment.

NOTE: This equipment has been tested and found to comply with the limits for a Class B digital device, pursuant to part 15 of the FCC Rules. These limits are designed to provide reasonable protection against harmful interference in a residential installation. This equipment generates, uses and can radiate radio frequency energy and, if not installed and used in accordance with the instructions, may cause harmful interference to radio communications. However, there is no guarantee that interference will not occur in a particular installation. If this equipment does cause harmful interference to radio or television reception, which can be determined by turning the equipment off and on, the user is encouraged to try to correct the interference by one or more of the following measures:

- Reorient or relocate the receiving antenna.
- Connect the equipment into an outlet on a circuit different from that to which the receiver is connected.
- Increase the separation between the equipment and the receiver.
- Consult the dealer or an experienced radio/TV technician for help.

CAN ICES-003 (B) / NMB-003 (B)

Contacting Customer Support

If you experience any problems or have any questions regarding your product, free technical support is available. Call from a phone where you have access to your product.

Be prepared to provide the following information:

- Name, address and telephone number
- Name of the product
- Make and model of any items or devices that you are using with the product
- Symptoms of the problem(s) and what led to them

Technical Support is available by telephone: **888-617-5884**
or by email at Info@Battery-Biz.com

Written inquiries should be directed to:

Battery-Biz Inc.;
Coleman Product Inquiry
1380 Flynn Road, Camarillo, CA 93012, USA

Recycling Information

Battery-Biz is committed to environmental responsibility and recommends that electronic devices be disposed of properly. Please contact your local city offices for information on recycling and disposal programs for e-waste.

For instructions on how to recycle this product visit <http://www.call2recycle.org>.

Two Year Limited Warranty

This product (Product) is warranted (Limited Warranty) by Battery-Biz Inc. (Distributor) against defects in material and workmanship under normal use and service to the original purchaser (Purchaser) for a period of 2 (two) years (Warranty Period) from the original date of purchase. The Limited Warranty does not extend to any subsequent owner or other transferee of the Product. Purchaser shall retain the dated sales receipt as evidence of proof and date of purchase as it will be required for any warranty claim or service. In order to keep the Limited Warranty in effect, the Product must have been handled and used as described in the instructions accompanying this Limited Warranty. The Limited Warranty does not cover any damage due to accident, improper storage, improper installation, modifications, unauthorized repair, normal wear and tear, failure to observe product specifications or safety warnings, force majeure, misuse, abuse or negligence. This Limited Warranty shall be null and void if Product's label(s) have been defaced, altered, or removed.

Remedies Under Warranty

With respect to a defective Product during the Warranty Period, Distributor in its sole and absolute discretion, will either: (a) repair or replace such Product (or the defective part) free of charge or (b) refund the purchase price of such Product. Distributor will pay for shipping and handling fees to return the repaired or replacement product to the Purchaser during the Warranty Period.

Disclaimer Of Warranty

The Limited Warranty described herein is Purchaser's sole remedy. To the extent permitted by law, Distributor disclaims all other implied or express warranties on Product including all warranties of merchantability and/or fitness for any particular purpose.

Limitation Of Liability

Except to the extent of repairing or replacing Product as expressly stated in the Limited Warranty described herein, Distributor shall not be liable for any damages, whether direct, indirect, incidental, special, consequential, exemplary, or otherwise, including lost revenues, lost profits, loss of use of software, loss or recovery of data, rental of replacement equipment, downtime, damage to property, and third-party claims, arising out of any theory of recovery, including statutory, contract or tort. Notwithstanding the terms of any limited or implied warranty or in the event that the Limited Warranty fails in its essential purpose, in no event will Distributor's entire liability exceed the purchase price of the Product. Some states and provinces do not allow the exclusion or limitation of incidental or consequential damages so the above limitations or exclusions and as a result may not apply to Purchaser. This Limited Warranty gives Purchaser specific legal rights. Purchaser may have other rights which vary from state to state and province to province.

In order to be considered for coverage under this Limited Warranty, all warranty returns of Product to Distributor must include (1) a copy of the original receipt for the purchase of Product, (2) a letter from Purchaser referencing the Return Merchandise Authorization number issued by Distributor to Purchaser with a description of the problem, and (3) Purchaser's contact information including phone number and shipping address. Purchaser is responsible for the cost of the warranty return shipping and handling as well as any related claims that may arise.

Product Registration

For complete warranty coverage, please register your Coleman product within fourteen days of purchase.

Visit ColemanPowerStations.com/Register

or scan the QR code to register.

