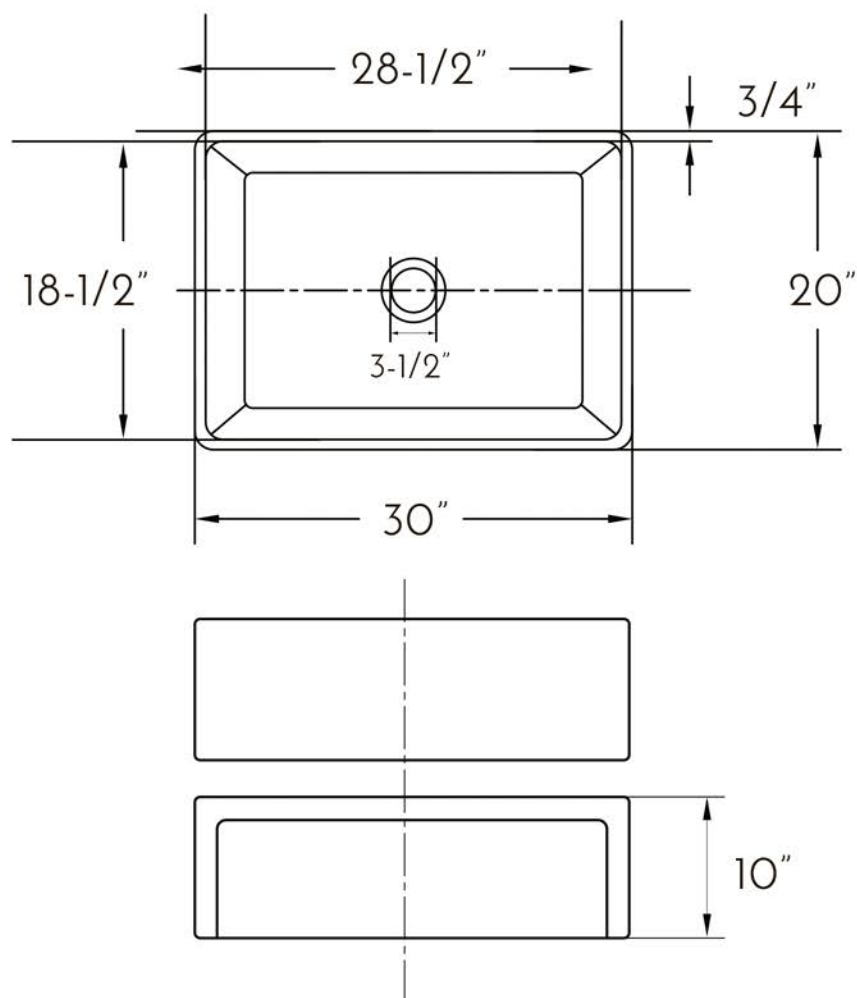




FARMHOUSE KITCHEN SINKS **SERIES**



FEATURES

- Undermount or overmount
- Reversible Apron (Flute or Flush)
- Fine Porcelain
- White Finish
- Size W 30" x H 20" x D 10"
- Standard 3-1/2" drain opening
- Cutting template

KITCHEN SINK **DAX-C3020**

MODEL	DAX-3020
INNER BASIN DEPTH (in)	18-1/2"
INNER BASIN WIDTH (in)	28-1/2"
INNER BASIN HEIGHT (in)	10"
HEIGHT	20"
DEPTH	10"
WIDTH	30"
BOTTOM GRIDS INCLUDED	No
BASIN SPLIT	No
BASKET STRAINER INCLUDED	No
COLANDER INCLUDED	No
DRAIN CONNECTION	3-1/2"
FARMHOUSE	Yes
FAUCET HOLES	No
INSTALLATION TYPE	Undermount or overmount
MATERIAL	Fine Porcelain
MINIMUM CABINET SIZE	30"
MOUNTING HARDWARE INCLUDED	Yes
NUMBER OF BASINS	1
SINK SHAPE	Rectangular
SINK FINISH TYPE	White

For parts or sale requirements
please contact our customer service department:



CS@daxib.com



1 888 685 8236