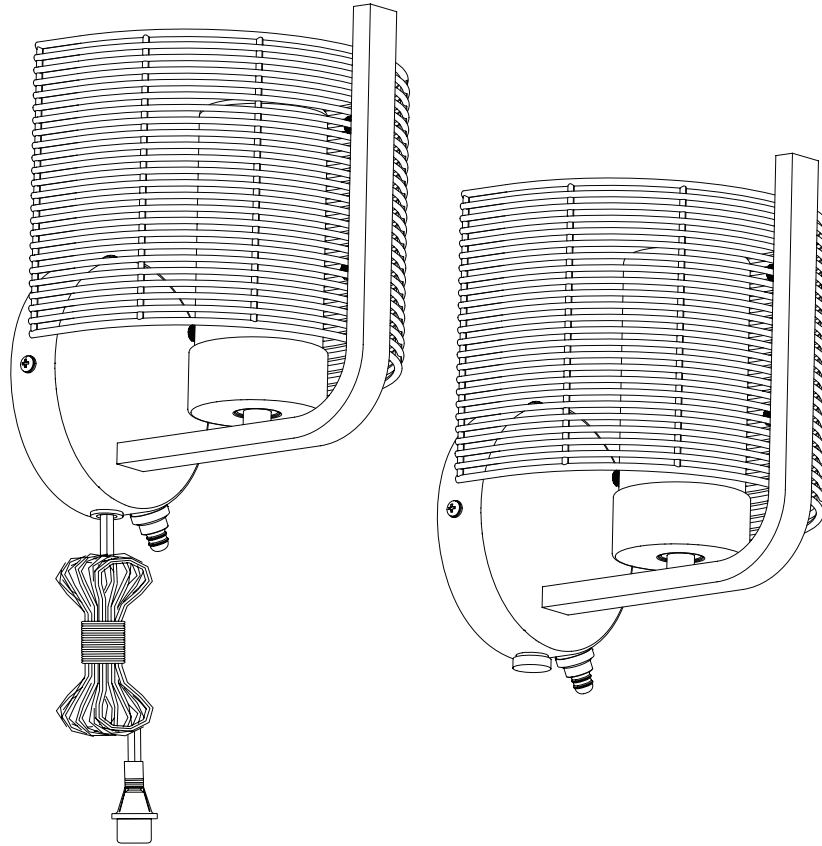


allen + roth®

welcoming • sophisticated • inspiring



Intertek

**RATED FOR
WET
LOCATIONS**

ALLEN + ROTH and logo design are trademarks or registered trademarks of LF, LLC. All rights reserved.

ITEM #5644933/5644929
MODEL #43043/43044

WALL SCONCE

Español p. 13

ATTACH YOUR RECEIPT HERE

Purchase Date _____

Thank you for purchasing this ALLEN + ROTH product.
Questions, problems, missing parts?
Before returning to your retailer, contact us at:
866-439-9800, 8 a.m. - 8 p.m., EST, Monday - Sunday or **ascs@lowes.com**.

TABLE OF CONTENTS

Package Contents. 3

Hardware Contents. 3

Preparation 3

Safety Information. 4

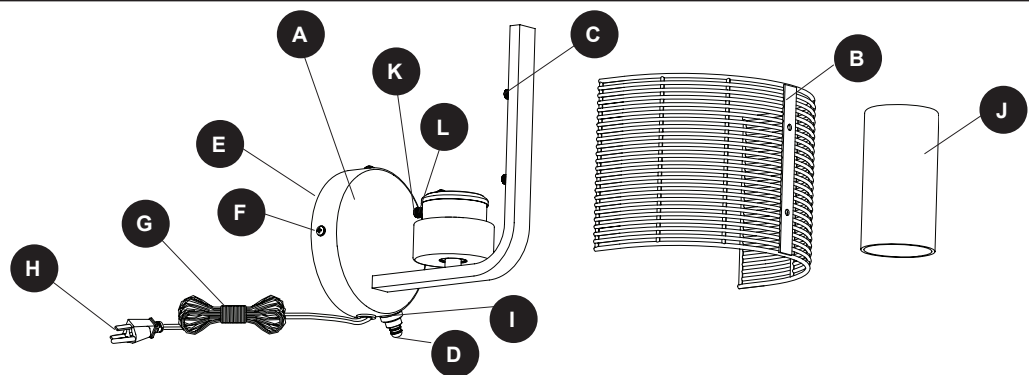
Assembly Instructions for Plug-in Installation. 5

Assembly Instructions for Hardwire Installation. 8

Troubleshooting. 14

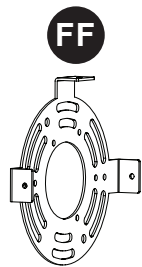
3-Year Limited Warranty. 14

PACKAGE CONTENTS

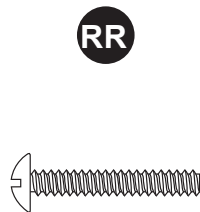


PART	DESCRIPTION	QUANTITY
A	Fixture	1
B	Rattan Shade	1
C	Shade Thumbscrew (preassembled to Fixture [A])	2
D	Switch (preassembled to Fixture [A])	1
E	Wall Plate (preassembled to Fixture [A])	1
F	Mounting Screws (preassembled to Wall Plate [E])	3
G	Power Cord (preassembled to Fixture [A])	1
H	Plug (preassembled to Power Cord [G])	1
I	Grommet (preassembled to Fixture [A])	1
J	Glass Shade	1
K	Glass Thumbscrew (preassembled to Fixture [A])	1
L	Washer (preassembled to Glass Thumbscrew [K])	1
M	Wire Cover (preassembled to Wall Plate [E])	1

HARDWARE CONTENTS (not drawn to scale)



Mounting Bracket
Qty. 1



Mounting
Bracket Screw
Qty. 2

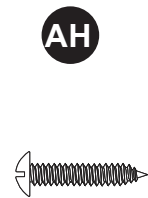
(for hardwire installation)



Plug Button
Qty. 1



Anchor
Qty. 2



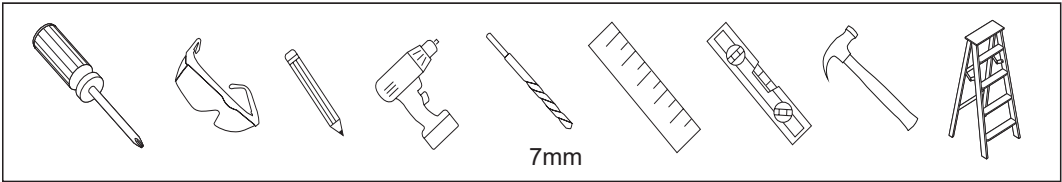
Anchor Screw
Qty. 2

(for plug-in installation)

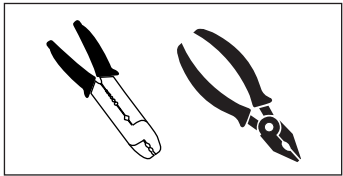
PREPARATION

Estimated Assembly Time: 60 minutes

Tools Required for Assembly (not included):



Helpful Tools (not included)



SAFETY INFORMATION

Please read and understand this entire manual before attempting to assemble, operate or install the product. Failure to do so could lead to electrical shock, fire or other injuries that could be hazardous or even fatal.

- Before you begin installing the light kit, disconnect the power by removing fuses or turning off the circuit breakers.
- The net weight of the light kit is 7.48 lbs.
- **RATED FOR WET LOCATIONS.** This fixture is intended for indoor, damp, or outdoor use.



DANGER:

- **DO NOT** connect this fixture to an electrical system that does not provide a means for equipment grounding. Never use a fixture in a two-wire system that is not grounded. Installing a fixture into an electrical system not having a proper grounding means could cause metal parts of the fixture to carry electrical currents if any of the fixture wires, wire connections or splices were to become broken, cut or loose during the mounting or normal operation of the fixture. Under this condition, anyone coming in contact with the fixture would be subject to electrical shock, which could cause serious injury or death.
- **DO NOT** connect the bare or green insulation fixture ground wire to the black (hot) current-carrying wire or the white neutral house wire. Connection of the bare or green fixture ground wire to the black or white house wires may cause metal parts of the fixture to carry electrical currents. Under this condition anyone coming in contact with the fixture will receive electrical shock, which could cause serious injury or death.
- **DO NOT** damage or cut the wire insulation (covering) during installation of the fixture. **DO NOT** permit wires to contact any surface having a sharp edge. To do so may damage or cut the wire insulation, which could cause serious injury or death from electrical shock.



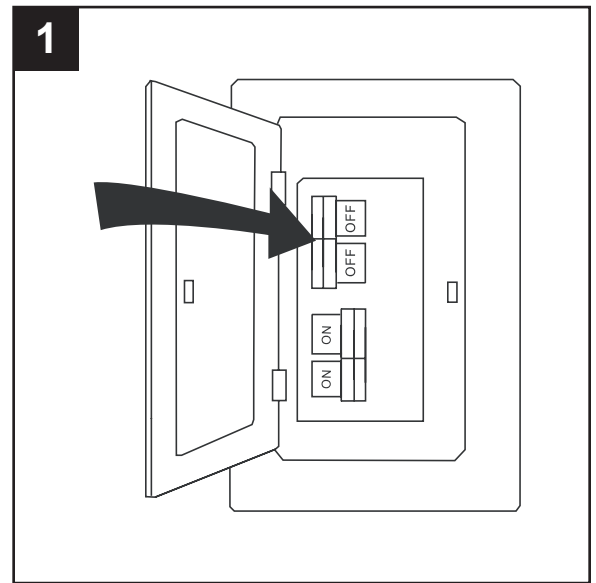
WARNING:

- All electrical connections must be in agreement with local codes and ordinances, the National Electric Code (NEC) and ANSI/NFPA 70-1999. Contact your municipal building department to learn about your local codes, permits and/or inspections. Risk of fire - most dwellings built before 1985 have supply wire rated for 140°F. Consult a qualified electrician before installation.
- To avoid personal injury, the use of gloves may be necessary while handling fixture parts with sharp edges.
- **DO NOT** suspend any fixture by the house wires. A fixture must always be mounted directly to a an outlet box. Wire connectors will not support the weight of a fixture. Suspending a fixture by the house wires and wire connectors will result in the fixture falling, with the possibility of personal injury and the danger of electrical shock or fire.
- To reduce the risk of fire, electrical shock, or personal injury, each wire connector used with this light kit should accept only one 18-gauge wire from the light fixture and one 18-gauge wire from the outlet box. If there are three or more wires to connect or any of the wires is larger than 18 gauges, consult an electrician for the proper size wire connectors to use.
- If using the fixture in a wet location, the outlet must be connected to a supply circuit that is protected by a Ground Fault Circuit Interrupter (GFCI) to reduce the risk of personal injury, electrical shock or death.
- For use outdoors: **ONLY** connect the power cord to a covered 120-volt Class A Type GFCI (ground fault circuit interrupter) protected hooded flush type cover plate outlet that is marked "WET LOCATION".

ASSEMBLY INSTRUCTIONS FOR PLUG-IN INSTALLATION

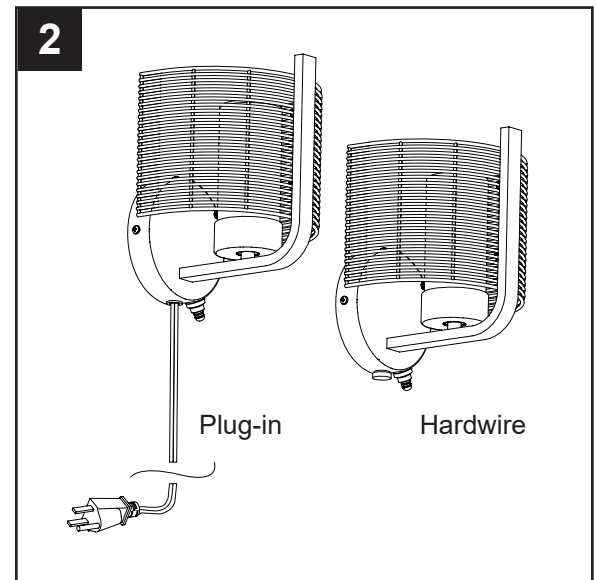
1. Turn off the circuit breakers and the wall switch to the supply line leads.

⚠ DANGER: Failure to disconnect the power supply prior to installation may result in serious injury or death.



2. This fixture has two options for installation. To install the fixture using the plug-in method, continue to the next step.

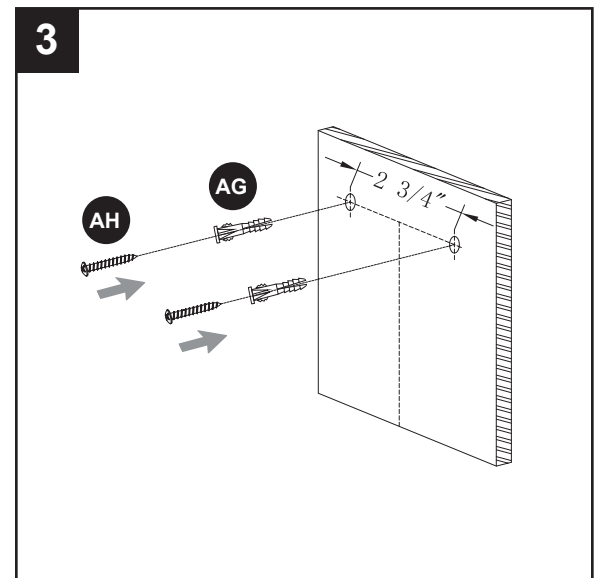
To install the fixture without the plug, skip to ASSEMBLY INSTRUCTIONS FOR HARDWIRE INSTALLATION, page 8. **Note:** Hardwire installation requires an outlet box at the installation location.



3. Determine the desired location of the fixture assembly (A) making sure you have access to an electrical outlet and there are no electrical lines or plumbing where you intend to attach the mounting hardware. Mark the anchor (AG) locations on wall and drill each hole 7 mm in diameter. Insert the anchors (AG) and tap into the wall until secure. Using a screwdriver, set two anchor screws (AH) into the anchors (AG) leaving enough exposed to set into the keyhole slots on the preassembled wall plate (E).

Hardware Used

AG Anchor		x 2
AH Anchor Screw		x 2

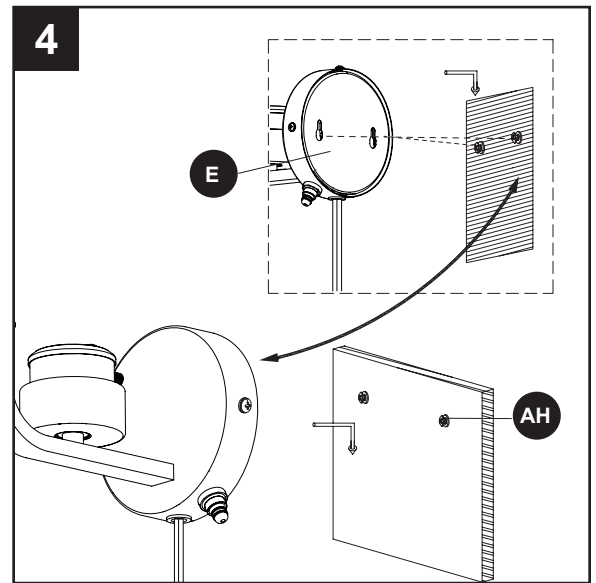


ASSEMBLY INSTRUCTIONS FOR PLUG-IN INSTALLATION

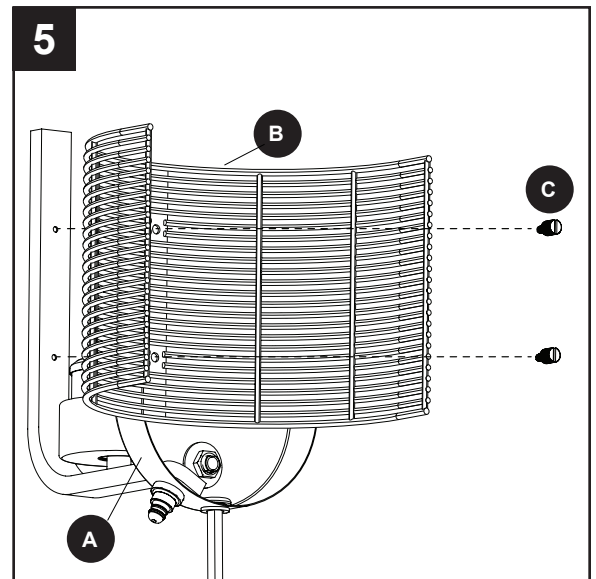
- Align the keyhole slots on the wall plate (E) with the anchor screws (AH) on the wall and then gently push the wall plate (E) against the wall and slide down until secure.

Hardware Used

AH Anchor Screw  x 2



- Remove two shade thumbscrews (C) preassembled to arm of fixture (A). Align the holes in rattan shade (B) with screw holes in arm of fixture (A) and secure with shade thumbscrews (C).

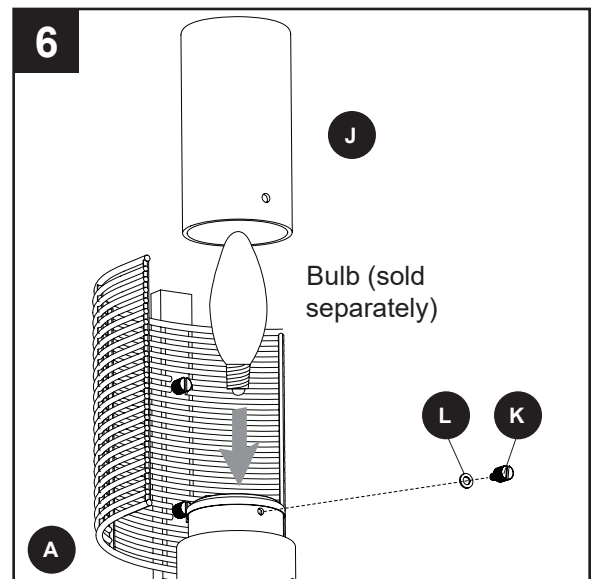


- Remove the glass thumbscrew (K) and washer (L) from the socket. Install E12-base bulb. Then cover the bulb with glass shade (J) and reinstall the glass thumbscrew (K) and washer (L). **CAUTION:** Hand tighten glass thumbscrew (K). Over tightening could damage or break glass shade (J).

Important: Make sure you allow the bulb and fixture (A) to cool before you replace the bulb.

Assembly is complete.

Turn ON the electrical power at the main fuse or circuit breaker.

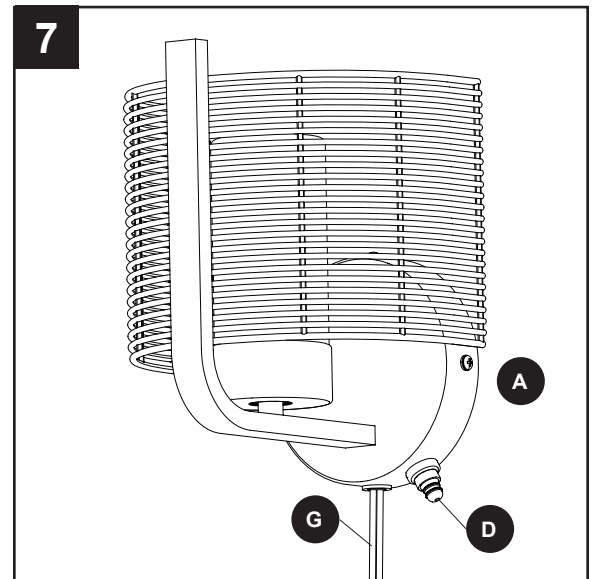


ASSEMBLY INSTRUCTIONS FOR PLUG-IN INSTALLATION

7. Insert plug (H) preassembled to power cord (G) into nearby electrical outlet and turn on using switch on underside of fixture (A).

WARNING: For indoor locations - If using the fixture indoors in a wet location, it must be connected to a supply circuit that is protected by a Ground Fault Circuit Interrupter (GFCI) to reduce the risk of personal injury, electrical shock or death.

For use outdoors: **ONLY** connect the power cord to a covered 120-volt Class A Type GFCI (ground fault circuit interrupter) protected hooded flush type cover plate outlet that is marked "WET LOCATION".

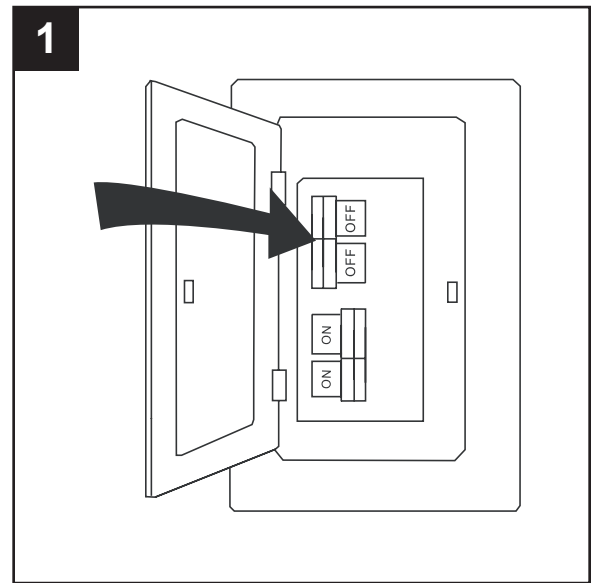


ASSEMBLY INSTRUCTIONS FOR HARDWIRE INSTALLATION

1. Turn off the circuit breakers and the wall switch to the supply line leads.

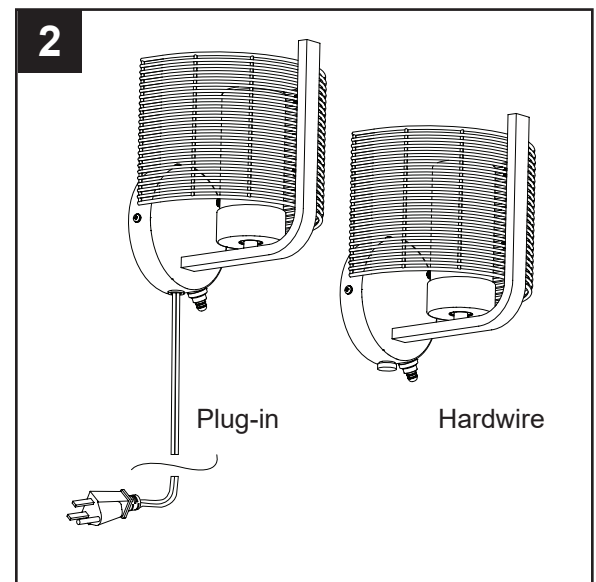


DANGER: Failure to disconnect the power supply prior to installation may result in serious injury or death.

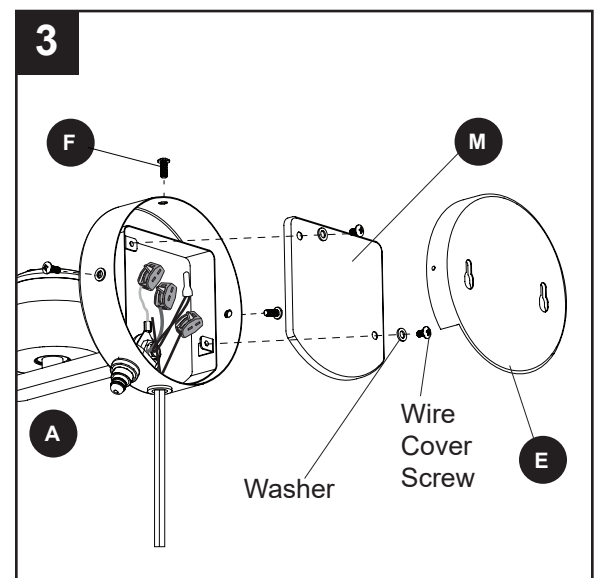


2. This fixture has two options for installation. To install the fixture using the hardwire method, continue to the next step. **Note:** Hardwire installation requires an outlet box at the installation location.

To install the fixture using the plug-in method, return to ASSEMBLY INSTRUCTIONS FOR PLUG-IN INSTALLATION, page 5.

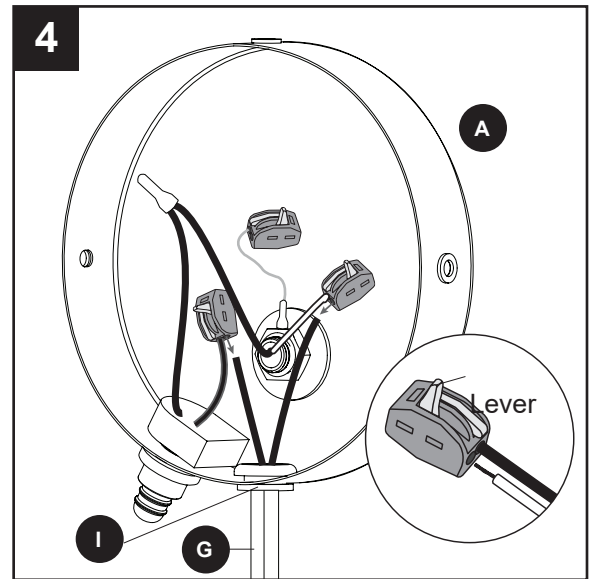


3. To remove the wall plate (E) from the back of the fixture (A), unscrew and remove the three mounting screws (F) from the edge of the fixture (A). Next, remove the wire cover screws and washers from the wire cover (M). **Note:** The wall plate (E) and wire cover will not be used for hardwire installation.



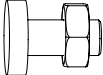
ASSEMBLY INSTRUCTIONS FOR HARDWIRE INSTALLATION

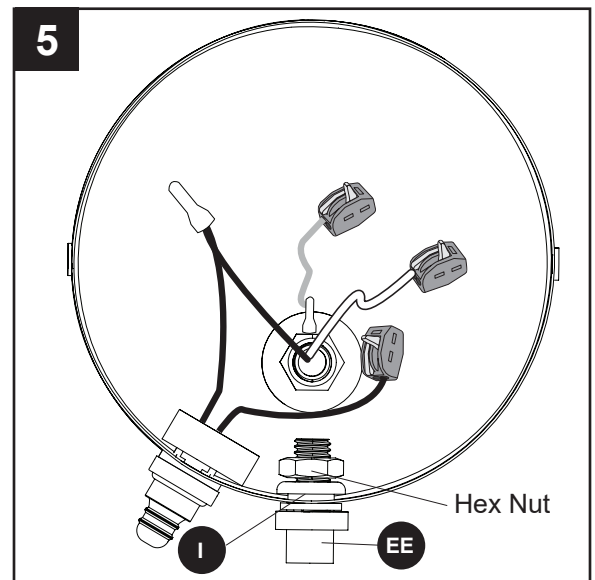
4. To remove the power cord (G) from the fixture (A), locate the two wires extending from the power cord (G). Lift the lever on the wire connectors preassembled to the fixture wires to release each plug wire. Once both wires of the power cord (G) are released, pull it through the grommet (I) at the bottom of the fixture (A) to remove.



5. Remove the hex nut preassembled to plug button (EE). Then insert the plug button (EE) through grommet (I) and secure with the hex nut.

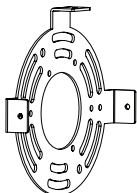
Hardware Used

EE Plug Button  x 1

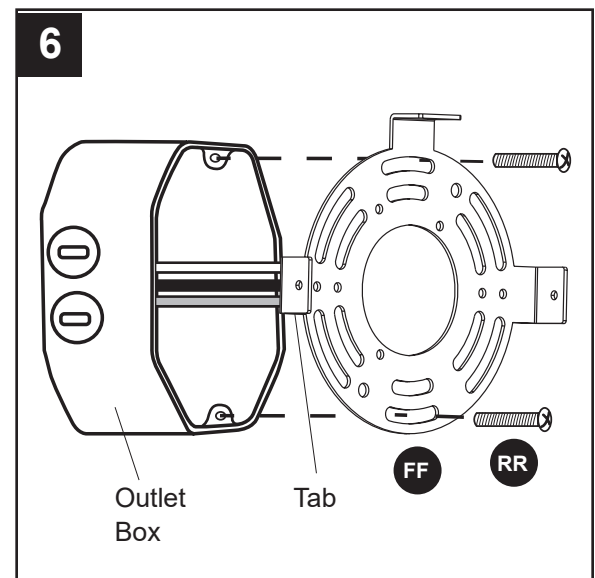


6. Use the two mounting bracket screws (RR) to attach the mounting bracket (FF) to the outlet box (sold separately). **Note:** Ensure two mounting bracket tabs are parallel to the horizon.

Hardware Used

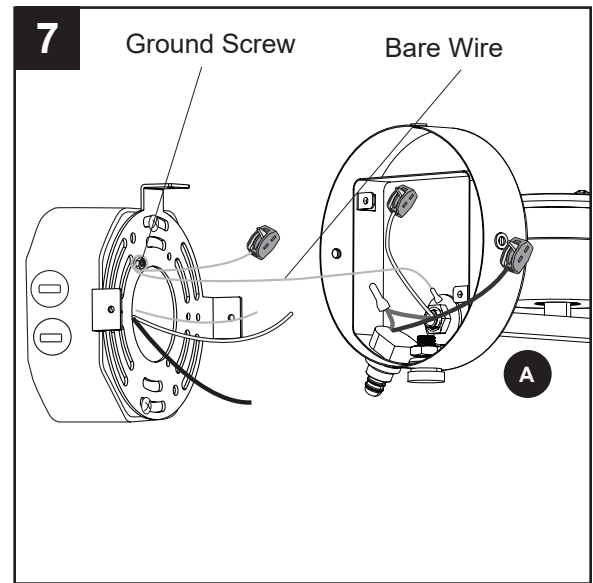
FF Mounting Bracket  x 1

RR Mounting Bracket Screw  x 2



ASSEMBLY INSTRUCTIONS FOR HARDWIRE INSTALLATION

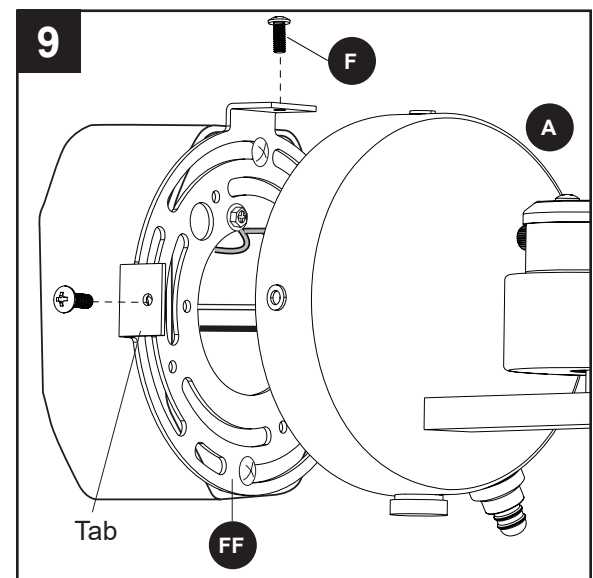
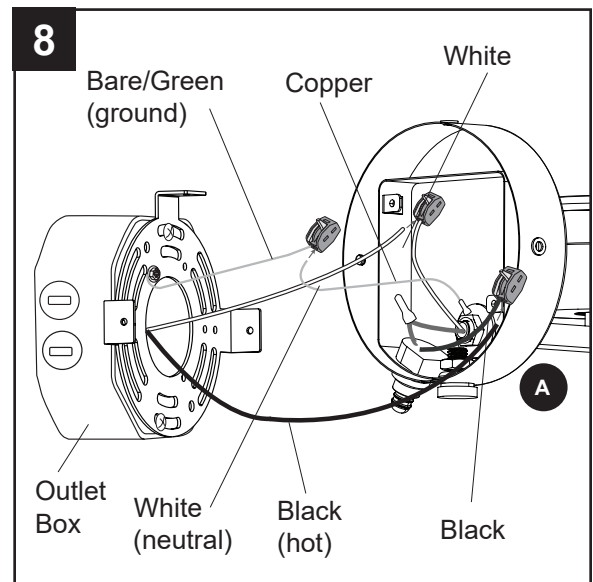
7. Loosen the ground screw on the mounting bracket and wrap the bare wire from the fixture (A) around the ground screw. Tighten the ground screw to hold the bare wire in place. **Note:** Ensure there is enough of the bare wire extending from the ground screw to connect to the ground wire from the outlet box using a wire connector.



8. Make the following wire connections using the wire connectors preassembled to the fixture (A) wires:
- Push the Bare/Green (ground) supply wire into the empty wire hole of the wire connector preassembled to the Copper wire. Lower the lever to secure.
 - Push the White (neutral) supply wire into the empty wire hole of the wire connector preassembled to the White wire. Lower the lever to secure.
 - Push the Black (hot) supply wire into the empty wire hole of the wire connector preassembled to the Black wire from the switch. Lower the lever to secure.

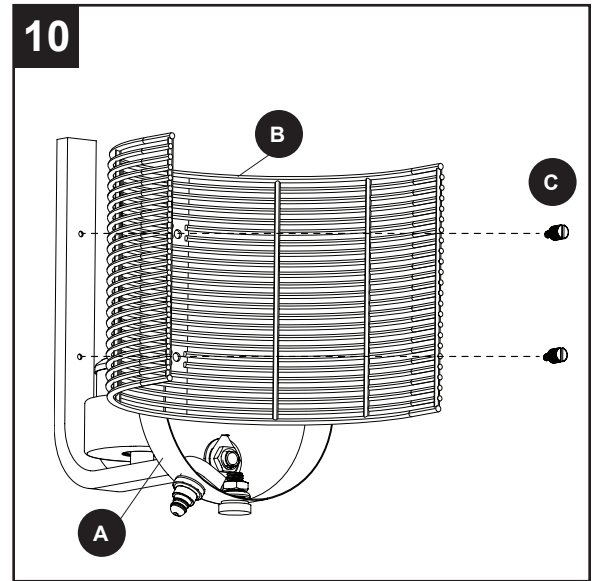
Note: If household supply wires are different colors than referred to above, it is recommended a professional electrician determines the proper wiring.

9. Align the three holes in the edge of the fixture (A) with the three holes in the tabs on the mounting bracket (FF). Then use the three previously removed mounting screws (F) to secure fixture (A) to mounting bracket (FF).



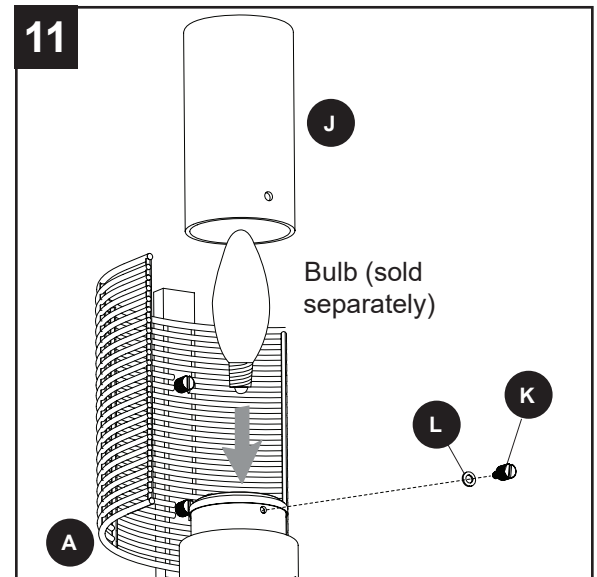
ASSEMBLY INSTRUCTIONS FOR HARDWIRE INSTALLATION

10. Remove two shade thumbscrews (C) preassembled to arm of fixture (A). Align the holes in rattan shade (B) with screw holes in arm of fixture (A) and secure with shade thumbscrews (C).

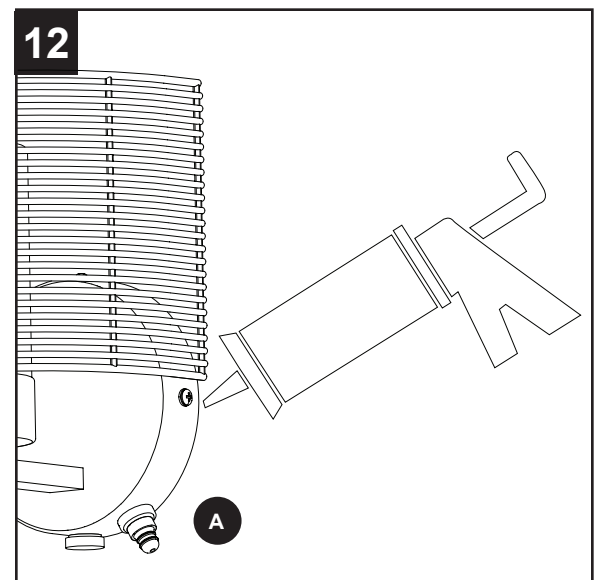


11. Remove the glass thumbscrew (K) and washer (L) from the socket. Install E12-base bulb. Then cover the bulb with glass shade (J) and reinstall the glass thumbscrew (K) and washer (L). Repeat for each bulb and glass shade (J). **CAUTION:** Hand tighten glass thumbscrew (K). Over tightening could damage or break glass shade (J).

Important: Make sure you allow the bulb and fixture (A) to cool before you replace the bulb.



12. To prevent water, rain, or moisture from entering fixture, use waterproof caulk (sold separately) to seal the perimeter.

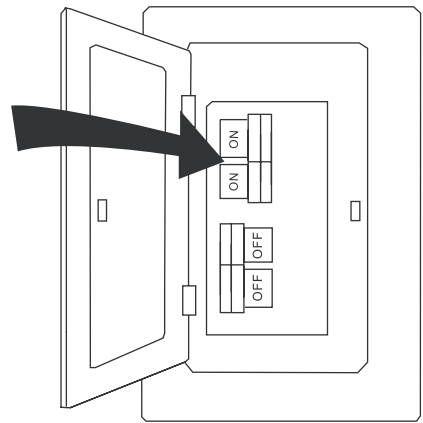


ASSEMBLY INSTRUCTIONS FOR HARDWIRE INSTALLATION

13. Assembly is complete.

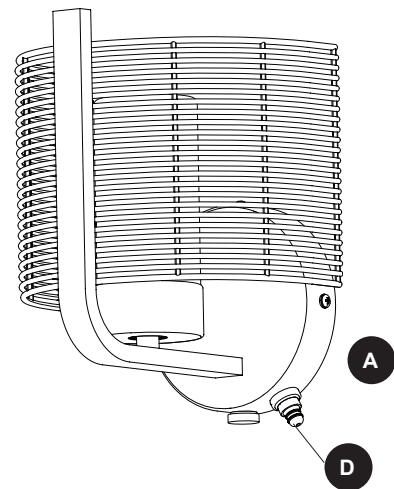
Turn ON the electrical power at the main fuse or circuit breaker.

13



14. Move switch (D) on underside of fixture (A) to ON position.

14



TROUBLESHOOTING

PROBLEM	POSSIBLE CAUSE	CORRECTIVE ACTION
Bulb will not light.	1. Fixture may be wired incorrectly. 2. Worn or broken bulb.	1. Check wiring. 2. Replace bulb. 3. Ensure switch is in ON position.

THREE-YEAR LIMITED WARRANTY

The manufacturer warrants all of its lighting fixtures against defects in materials and workmanship for three (3) years from the date of purchase. If within this period the product is found to be defective, take a copy of the bill of sale as a proof of purchase and the product in its original carton to the place of purchase. The manufacturer will, at its option, repair, replace or refund the purchase price to the consumer. All costs of installation and removal of the fixture is the responsibility of the consumer. This warranty does not cover fixtures becoming defective due to misuse, accidental damage or improper handling and/or installation and specifically excludes liability for direct, incidental or consequential damages. As some states do not allow exclusions of limitations on an implied warranty, the above exclusion and limitation may not apply. This warranty gives you specific rights and you may also have other rights which may vary from state to state.