

INSTALLATION INSTRUCTIONS CARE AND MAINTENANCE



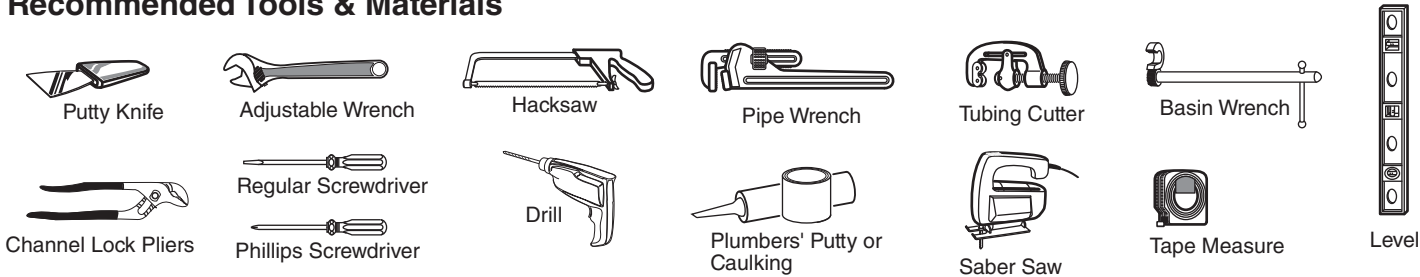
Edgemere™ 0445 Series Console / Pedestal

Thank you for selecting American Standard - the benchmark of fine quality for over 100 years. To ensure this product is installed properly, please read these instructions carefully before you begin. (Certain installations may require professional help.) Also be sure your installation conforms to local codes.

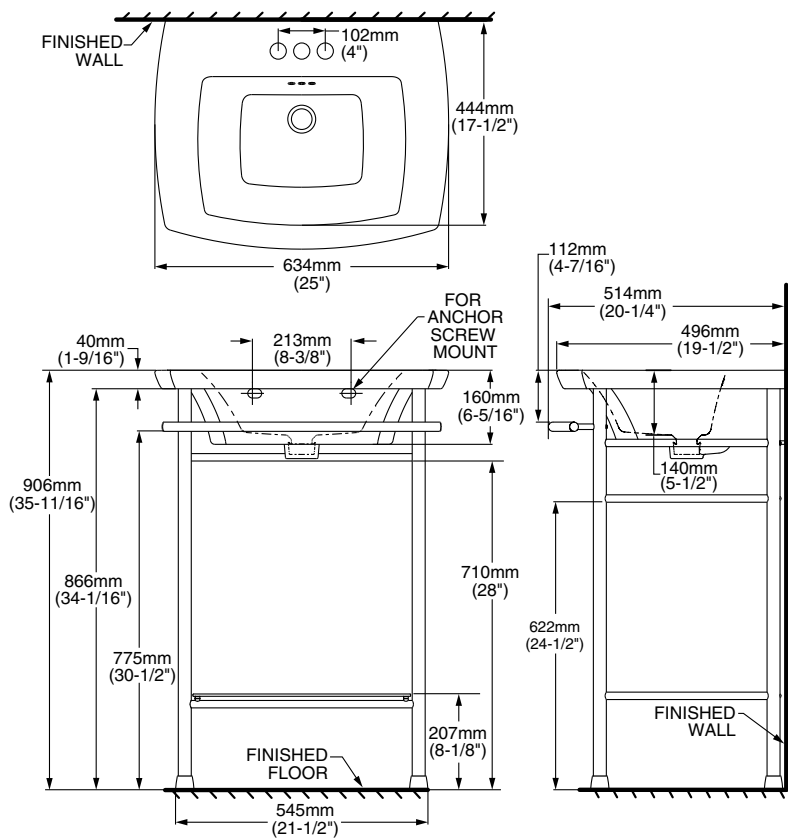
CAUTION: PRODUCT IS FRAGILE. TO AVOID BREAKAGE AND POSSIBLE INJURY HANDLE WITH CARE!
NOTE: Pictures may not exactly define contour of china and components.

OBSERVE LOCAL PLUMBING AND BUILDING CODES

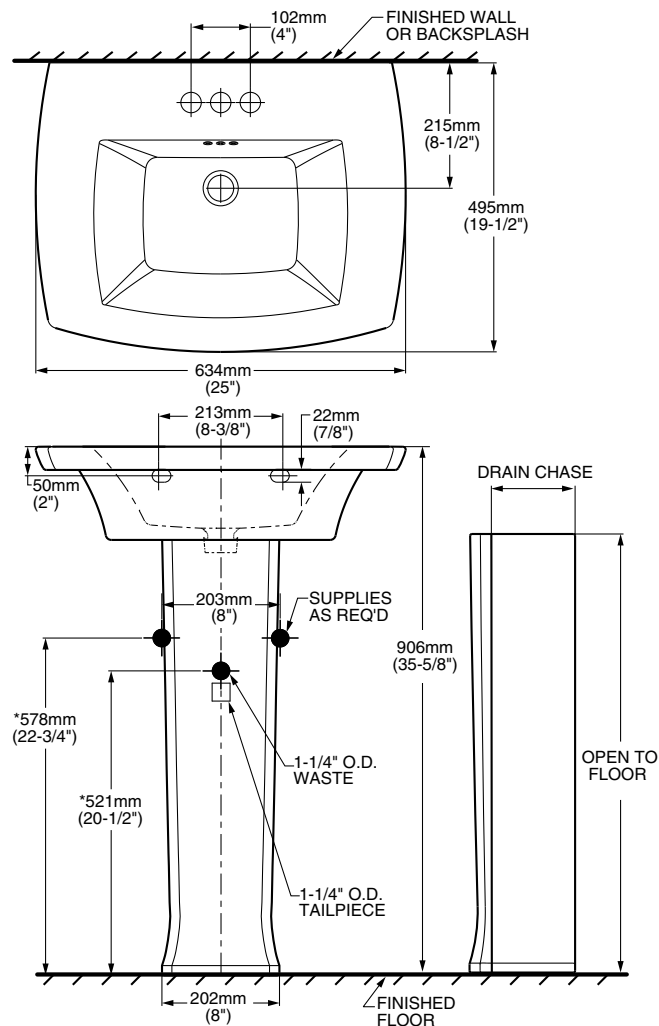
Recommended Tools & Materials



Edgemere Console Lavatory



Edgemere Pedestal Lavatory



7302242-100A

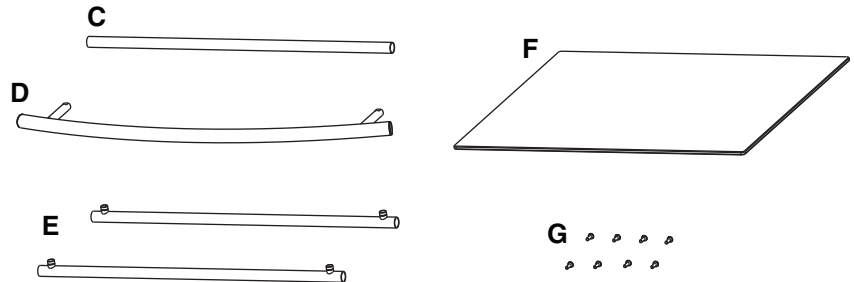
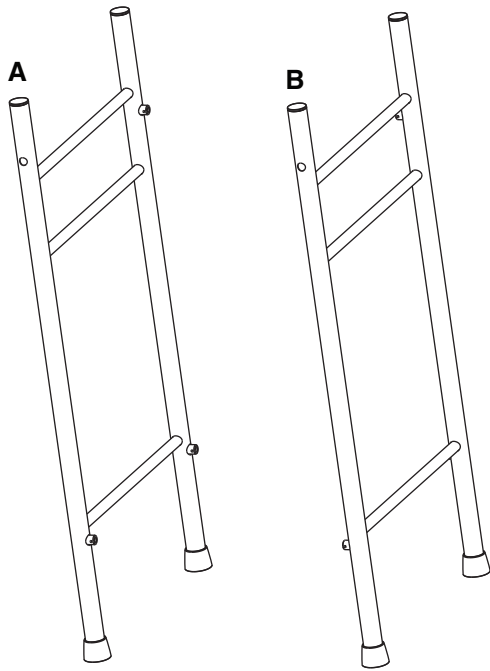
Product names listed herein are trademarks of AS America, Inc.
© AS America, Inc. 2016

7302242-100 Rev. A

SAVE FOR FUTURE USE

8719 CONSOLE TABLE COMPONENTS LIST

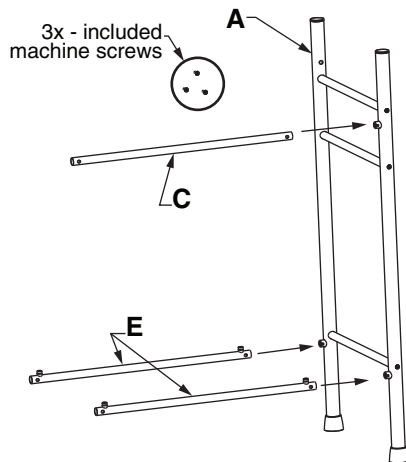
ITEM #	QTY.	DESCRIPTION
A	1	LEFT SIDE LEG SUB-ASSEMBLY
B	1	RIGHT SIDE LEG SUB-ASSEMBLY
C	1	BACK TOP SUPPORT TUBE
D	1	TOWEL BAR
E	2	SHELF SUPPORT TUBE
F	1	TEMPERED GLASS SHELF
G	8	M4 x 0.7 PHILLIPS HEAD MACHINE SCREW



CONSOLE ASSEMBLY

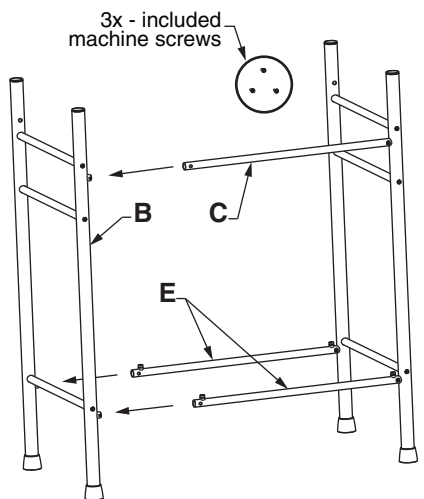
1

Insert the back top support tube (C) as well as both shelf support tubes (E) into the exposed tube housings in the left side leg sub-assembly (A) as shown. Align the support tubes such that the holes in the support tubes line up with the threaded housings in the side leg sub-assembly. Using 3 of the provided machine screws, tightly secure the support tubes into the side leg sub-assembly.

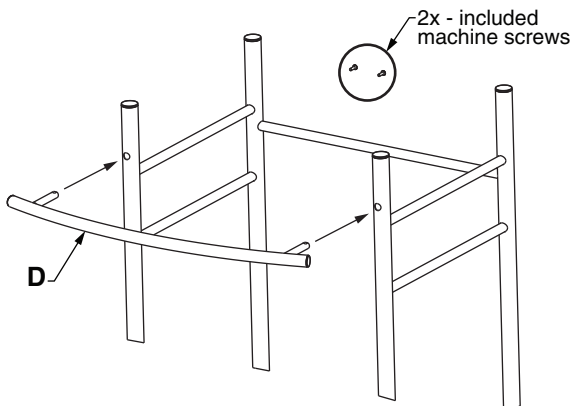


2

Insert the right side leg sub-assembly (B) into the exposed ends of support tubes (C, E) as shown. Make sure to align the support tubes holes to the threaded portion of the side leg sub-assembly housings. Using 3 of the provided machine screws, tightly secure the support tubes into the right side leg sub-assembly.



3



Insert the towel bar (D) into the two exposed holes on the upper front legs of the the console assembly. Using the final 2 machine screws, tightly secure the towel rack to the console.

4

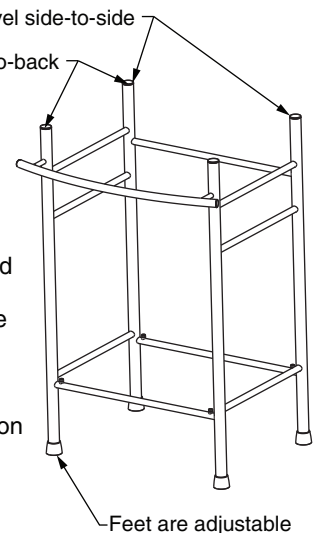


Adjustable foot bumper

Level side-to-side
Level front-to-back

Place assembly into approximate installation position. Use a level and the four independently adjustable foot bumpers to ensure the console assembly is level both side-to-side and front-to-back.

Note: Wait until after final installation of console and sink to assemble glass shelf onto shelf support and remove protective film.



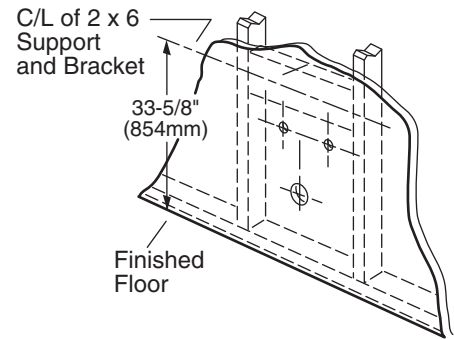
Feet are adjustable

PEDESTAL AND CONSOLE LAVATORY INSTALLATION

1 Wall Preparation for Sink and Pedestal/Console Installation

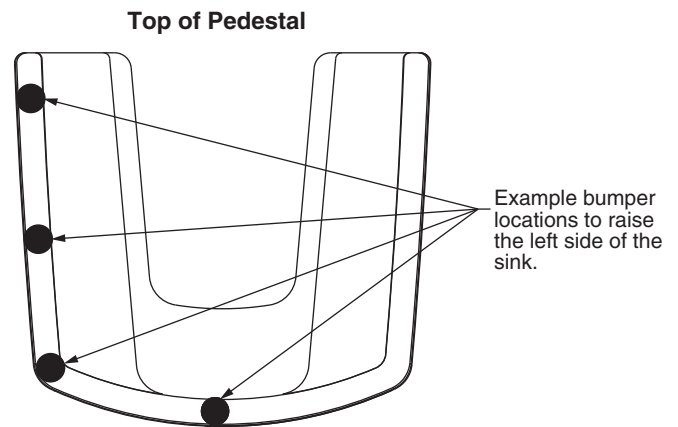
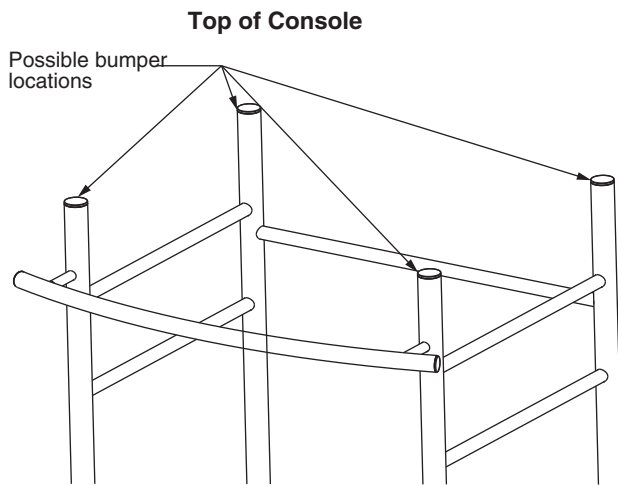
Provide suitable reinforcement behind finished wall for sink hanger screws. For an installed sink height of 35-5/8" (905mm) center the reinforcement 33-5/8" (854mm) above the floor

Note: If replacing an existing sink be certain to shut off water supply prior to removing old sink.



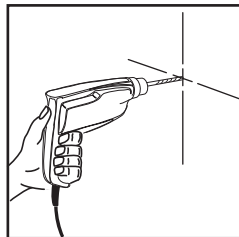
2 Preparation of Sink and Pedestal/Console

1. Place pedestal/console into approximate position near wall.
2. Place sink on pedestal/console, aligning recesses on the underside of the sink to the respective location on pedestal/console.
3. Place a level on the sink and pedestal/console assembly.
4. If necessary use one or more of the included bumper cushions to level and cushion sink slab to pedestal/console.
5. Move sink and pedestal/console assembly into contact with wall.
6. With a pencil, mark through the center of the two mounting holes found on the back of the sink. (If securing pedestal to floor, mark the center of holes on the bottom of the pedestal.)

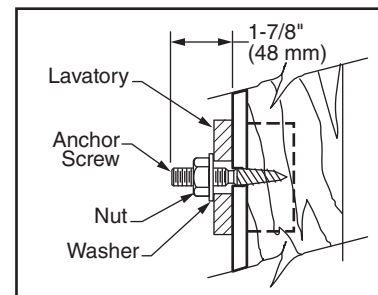


3 Anchor Screw Installation

1. Move the assembly well clear of the wall.
2. Drill two pilot holes at the center marks using a 1/4" drill bit.
3. Thread the two 5/16" headless hanger screws leaving 1-7/8" (48 mm) of the threaded end exposed as illustrated.

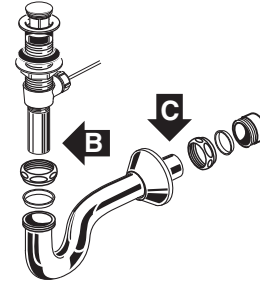
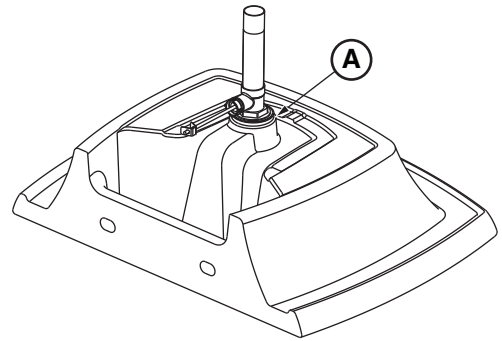


Note: Pedestal is not provided with mounting hardware. Various pedestal screw sizes and types are available to the installer at local hardware outlets.



4 Faucet and Drain Installation

1. Following manufacturer's instructions, install faucet and drain assembly (not included).
2. Apply a bead of sealing putty on the underside of the drain (see detail A) in order to ensure a watertight seal between the sink and the drain. Remove excess putty after installing drain on sink.
3. Return the sink assembly to the installed position, guiding the sink over the two headless hanger screws.
4. Connect the trap to drain assembly and hand-tighten to check alignment. It may be necessary to cut off part of the tailpiece (see detail B) or part of the horizontal leg of the trap (see detail C).



5 Sink and Pedestal/Console Installation

1. Secure sink to wall, install washers and hand tighten nuts.
2. Connect hot and cold supply lines between the fitting valve and the supply shut-off valves.
3. Tighten trap joints for watertight assembly.
4. Apply a bead of caulk around the back edge of the sink where it contacts the wall.

Note: For sink and console assembly, insert rectangular glass shelf onto the shelf support and remove protective film from glass shelf.

CONSOLE CARE INSTRUCTIONS: Rinse the product clean with clear water. Dry with a soft cotton flannel cloth.
DO NOT: Clean with soaps, acid, polish, abrasives, harsh cleaners, or a cloth with coarse surface.

AMERICAN STANDARD ONE-YEAR LIMITED WARRANTY

If inspection of this American Standard plumbing product, within one year after its initial purchase, confirms that it is defective in materials or workmanship, American Standard will repair or, at its option, exchange the product for a similar model.

This warranty **does not apply** to local building code compliance. Since local building codes vary considerably, the purchaser of this product should check with a local building or plumbing contractor to insure local code compliance before installation.

This warranty **shall be void** if the product has been moved from its initial place of installation; if it has been subjected to faulty maintenance, abuse, misuse, accident or other damage; if it was not installed in accordance with American Standard's instructions; or if it has been modified in a manner inconsistent with the product as shipped by American Standard.

American Standard's option to repair or exchange the product under this warranty does not cover any labor or other costs of removal or installation, **nor shall American Standard be responsible for any other incidental or consequential damages attributable to a product defect or to the repair or exchange of a defective product, all of which are expressly excluded from this warranty.** (Some states or provinces do not allow the exclusion or limitation of implied warranties, so this exclusion may not apply to you.)

This warranty gives you specific legal rights. You may have other statutory rights that vary from state to state or from province to province, in which case this warranty does not affect such statutory rights.

For service under this warranty, it is suggested that a claim be made through the contractor or dealer from or through whom the product was purchased, or that a service request (including a description of the product model and of the defect) be sent to the following address:

In the United States:

American Standard Brands
1 Centennial Ave.
Piscataway, New Jersey 08855
Attention: Director of Customer Care
For residents of the United States, warranty information may also be obtained by calling the following toll free number: (800) 442-1902
www.americanstandard.com

In Canada:

AS Canada, ULC
5900 Avebury Rd.
Mississauga, Ontario
Canada L5R 3M3
Toll Free: (800) 387-0369
www.americanstandard.ca

In Mexico:

American Standard B&K Mexico
S. de R.L. de C.V.
Via Morelos #330
Col. Santa Clara
Ecatepec 55540 Edo. Mexico
Toll Free: 01-800-839-1200
www.americanstandard.com.mx