

PASS & SEYMOUR®

PLUGTAIL™ WIRING DEVICES

# YOUR CONNECTION

## FOR PROFITABLE COMMERCIAL INSTALLS



designed to be better.™



# PlugTail™ — the most complete line of labor-saving electrical wiring devices.

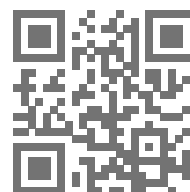
You already know Pass & Seymour Electrical Wiring Devices for their unmatched reliability. Now count on our PlugTail line of devices to increase productivity and profitability on any commercial job. They give you more control over labor costs and jobsite risks. And with a full line of devices to choose from, you also have more upgrade opportunities.

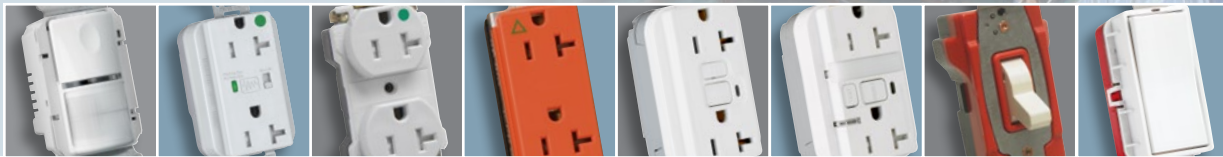
With PlugTail, you can move your complex tasks to the front of the project. **At rough-in**, install the pre-stripped leads of a PlugTail connector instead of pigtails. **At device installation**, click in the connector and tighten the mounting screws — done in less than a minute.

In 2004, Legrand revolutionized the industry with the introduction of PlugTail wiring devices. Today, this growing family of patented devices helps contractors across the continent kick even more tail by beating “impossible” deadlines, better managing labor and reducing jobsite risks — all while providing superior installations.

Beat  
impossible  
deadlines.

Scan this code and visit our mobile website. It's a great on-the-job reference source for all things PlugTail.





Twist, click, screw, **DONE.**

### **Your productivity gains begin at rough-in.**

Instead of making pigtails, simply connect the pre-stripped PlugTail Connector leads. In one simple step, you're ready for fast, easy device installation at any time.

### **Device installation takes less than a minute.**

Just plug the connector into the PlugTail device.

- no preparing, stripping or looping the conductors
- no taping terminals
- no mistakes resulting in rework or callbacks

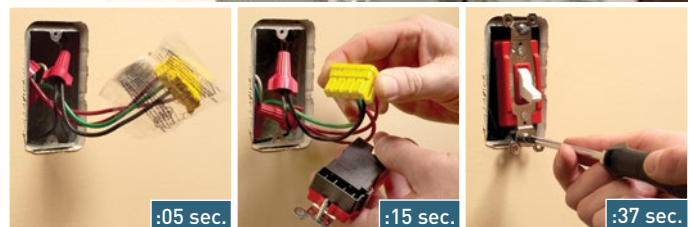
### **A faster, more reliable installation.**

PlugTail installation is three times faster than conventional device installation — saving you the most time at the end of the project when you're fighting completion pressure. With no exposed terminals, you can power-up and test a circuit at any time once the connectors are installed.

Whether the work is done by a first-year apprentice or by your most experienced installer, every PlugTail device will be installed correctly.

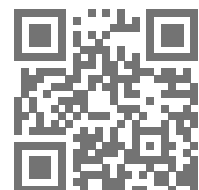
### **Happier installers. Happier customers.**

Because PlugTail installation's a lot easier on the knees and fingers, your installers benefit. And because it delivers dependability, quality and easier, safer service for years to come, your customers benefit, too.



When it's time for finish wiring, just remove the plastic wrapper. Connect the PlugTail device with just one click. Mount the device to the box — and you're done.

Scan this code and learn how you can simplify switch installation with PlugTail Switches.



# More PlugTail™ solutions give you more control at more jobsites.



PTTR63HW

## Healthcare

When it comes to healthcare installations, it's all about safety, simplicity, and dependability. That's what makes the PlugTail line so attractive. They not only meet stringent safety and compliance requirements, they make change outs and upgrades quick and easy.

### CODE TIP ...

Tamper-Resistant solutions meet *NEC*® section 517.18(C) requirements in pediatric-care areas.



PTTR5362WSP

## Education & Institution

The installation and risk management benefits of PlugTail give you a competitive edge when bidding on institutional, college and university jobs. And when you consider that academic and government schedules often drive tight construction schedules, PlugTail makes good economic sense.

### APPLICATION TIP ...

Surge Protection Devices protect expensive electrical equipment from damage caused by surges and spikes.



PTWSP250W

## Retail, Office, & Entertainment

In a world of fast setups, demanding deadlines, and increasing energy use, PlugTail is right at home. That's because they're dependable, safe, and incredibly easy to install. When you need to meet the often unrealistic demands of developers, you need PlugTail.

### APPLICATION TIP ...

Energy use is the second largest expense in commercial buildings. Occupancy Sensors can cut that expense by as much as 60%.



PT2095NTLTRW

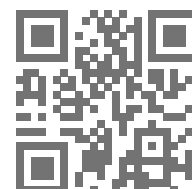
## Hospitality & Multiple Dwelling

The demands of investors and building owners are clear: they want code-compliant wiring devices that not only look good, but can stand up to the hard knocks of a hotel environment. And they want the job done now. Enter PlugTail devices.

### CODE TIP ...

2011 *NEC*® Section 406.4(D)(5) requires tamper-resistant receptacles in guest rooms and guest suites.

Scan this code  
and find the right  
PlugTail solution  
to your market  
challenge.



# See more productivity.



PT2095LA

## Spec Grade GFCIs

- **Patented SafeLock™ Protection** — if critical components are damaged and ground fault protection is lost, power to the receptacle is disconnected.
- **The most durable GFCI available** — exceeds UL®943 voltage requirement; survives 100X the required UL 3kA/6kA voltage surge test cycles.
- **GFCI available in combination with an automatic sensor LED nightlight** for added safety and convenience.



PT2095HGNTLTRW

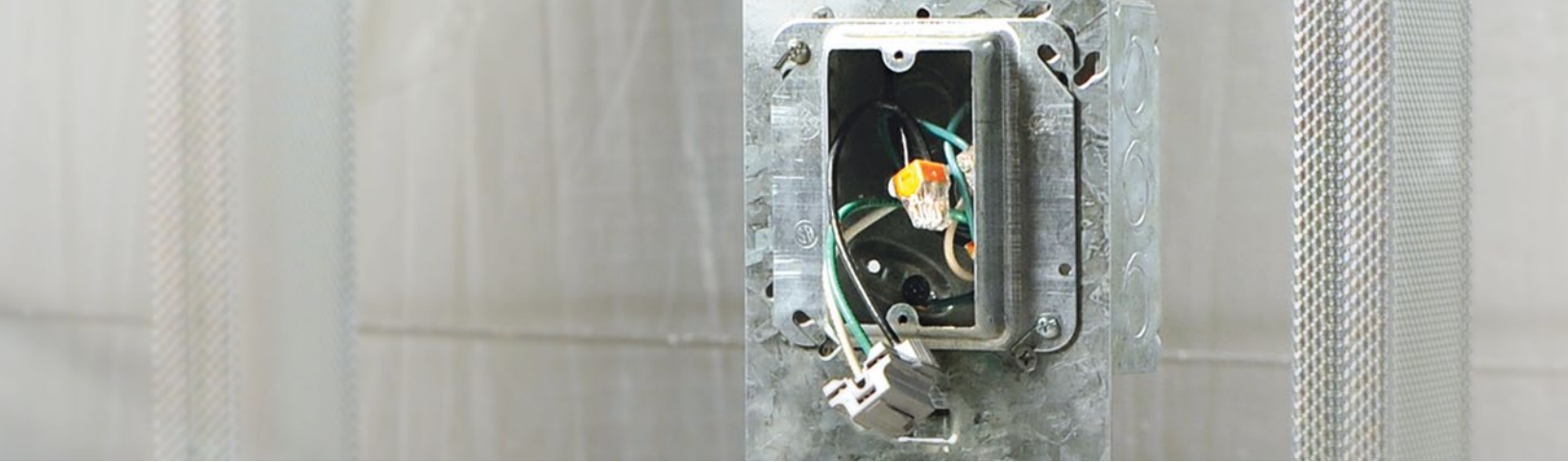
## Hospital Grade GFCIs

- **Tamper-resistant models** provide the only single-device solution to meet NEC® requirements for pediatric care areas.
- **LED makes it easy to spot a tripped condition.**
- **LED Nightlight/GFCI Combination** provides added safety.



### NAFTA-COMPLIANT

- Works for you to reap the rewards of stimulus-funded public works opportunities
- Same functionality, performance and productivity of our standard PlugTail Devices



PT8300I



PTTR8300WSP

## Extra Heavy-Duty Hospital Grade Receptacles

- **Circuit label on face** allows permanent circuit identification — an exclusive, patented feature.
- **Heavy-gauge, solid-brass strap.**
- **Receptacle connector features large brass terminal blades** for durable connections.
- **Uniquely illuminated receptacle** model is perfect for emergency-circuit applications.

## Surge Protection Devices

- **Fit the same box and use the same tails** as our PlugTail GFCIs and receptacles for easy upgrades.
- **Automatically safeguards** electronic equipment from energy surges and spikes.
- **The only device** with both flashing indicator alert light and audible tone.
- **Available in** Isolated Ground, Hospital Grade and Tamper-Resistant models.



PT8300ILRED



## Receptacle Connector

- **Right-Angle Connector** features **pre-stripped leads** for faster installation.
- **Connector contacts are crimped and welded** to ensure solid electrical connections.
- **Fits flush with device** back to leave more room in the box.



PT26352LA



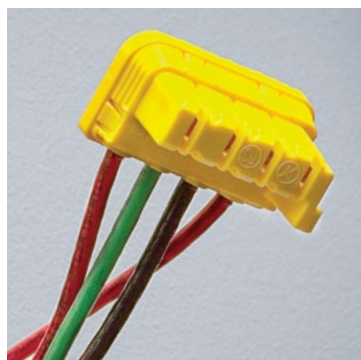
PT2623W

## Spec Grade Receptacles

- **No exposed terminals** — increases safety in all phases of installation and use.
- **Tamper-Resistant Receptacle models** ensure child safety.
- **Heavy-gauge, plated-steel strap** wraps around body and face to form a rigid structure.
- **Auto-ground clip** ensures grounding or provides redundant grounding in pipe-and-wire applications.

## Spec Grade Switches

- **Shallow design** for easier installation.
- **Illuminated solutions** for pilot and lighted applications.
- **No exposed parts** for finger-safe application.
- **PlugTail™ Switches are available in 120/277 and 347V solutions.**



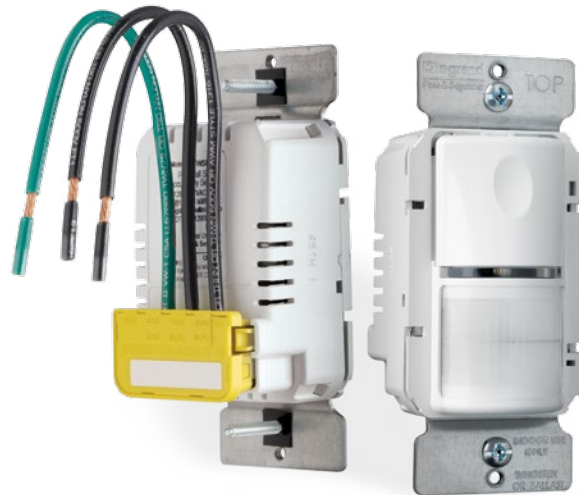
## Switch/Sensor Connector

- **Right-Angle Connector** features pre-stripped leads for faster installation.
- **Connector contacts are crimped and welded** to ensure solid electrical connections.
- **3-wire solutions for single-pole; 4-wire solutions for 3-way applications.**

# See more upgrade opportunities.



PT20AC1W



PTWSP250W

## Extra Heavy-Duty Switches

- Available in 120/277 and 347V solutions.
- Switch connector features large brass terminal blades for durable connections.
- Glass-reinforced nylon back body.
- One-piece nickel-plated strap.

### SPEC TIP . . .

PlugTail™ devices meet Fed Spec Performance Standard WC596 for receptacles and WS896 for switches. FSUL clearly marked on receptacle and switch mounting strap.

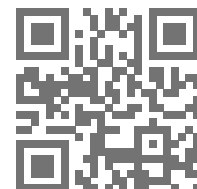
## Sensors

- Meets ASHRAE energy efficiency and government incentive requirements.
- Fits existing PlugTail Switch box and Switch Connector for easy upgrades designed to save up to 60% in energy costs.
- Productivity-enhanced installation of PlugTail, combined with same design and function of our popular sensors line.



PlugTail Sensors conserve energy by sensing when light is needed and when it is not — and responding accordingly.

Scan this code for more details on our entire family of PlugTail devices.



# See more profitability.



MRC2

MRC1

## Pass & Seymour Mud Ring Covers

- **Protects electrical box opening** from dust, debris, and other contaminants.
- **Removes easily** upon installation of the device.



PT-Tester

## PlugTail™ Tester

Enables users to quickly test installed receptacles and, unlike other testers, PlugTail Receptacle Connectors as well.



MB4S1PTSTR

## PlugTail Metal-Box Kit

Metal-box solutions feature pre-installed PlugTail Connectors. With the ground wire pre-mounted to the box and the mud ring factory-installed, this solution will reduce waste and time on the job. At device-out, remove the PlugTail poly-bag protection and install the device.



PSF1185825

## PlugTail Power™ Pre-fabricated Wiring System

- **PlugTail right angle push-in connector** for instant connection of additional conductors.
- **Pre-mounted steel wall box**, single-gang or two-gang.
- **Pre-mounted mud ring.**
- **Pre-installed PlugTail Connector** for one-click termination.

PlugTail Power floor brackets slide under the sill plate and establish an automatic 18-inch mounting height, and screw directly to the studs.

## PlugTail™ Receptacles



Catalog Number	Description	Ratings		NEMA Config. No.
		A.	V.	
Specification Grade Receptacles				
PT5262A*	Extra Heavy-Duty	15A	125V	5-15R
PT5362A*		20A	125V	5-20R
PTTR62*	Extra Heavy-Duty — Tamper-Resistant	15A	125V	5-15R
PTTR63*		20A	125V	5-20R
PT26252*	Decorator	15A	125V	5-15R
PT26352*		20A	125V	5-20R
PTTR26262*	Decorator — Fed Spec Grade Tamper-Resistant	15A	125V	5-15R
PTTR26362*		20A	125V	5-20R
PTIG26262*	Decorator — Isolated Ground	15A	125V	5-15R
PTIG26362*		20A	125V	5-20R
PT26262SC*	Decorator — Fed Spec Grade Split Circuit	15A	125V	5-15R
PT26362SC*		20A	125V	5-20R
PTTR26262SC*	Decorator — Split Circuit Tamper-Resistant	15A	125V	5-15R
PTTR26362SC*		20A	125V	5-20R
PT5262*	Duplex — Fed Spec Grade	15A	125V	5-15R
PT5362*		20A	125V	5-20R
PTTR5262*	Duplex — Fed Spec Grade Tamper-Resistant	15A	125V	5-15R
PTTR5362*		20A	125V	5-20R
PT5262SC*	Duplex — Fed Spec Grade — Split Circuit	15A	125V	5-15R
PT5362SC*		20A	125V	5-20R
PTTR5262SC*	Duplex — Fed Spec Grade — Split Circuit Tamper-Resistant	15A	125V	5-15R
PTTR5362SC*		20A	125V	5-20R
PTIG5262*	Duplex — Isolated Ground	15A	125V	5-15R
PTIG5362*		20A	125V	5-20R
Hospital Grade Receptacles				
PT8200*	Extra Heavy-Duty	15A	125V	5-15R
PT8200IL*	Extra Heavy-Duty — Illuminated	15A	125V	5-15R
PT8300*	Extra Heavy-Duty	20A	125V	5-20R
PT8300IL*	Extra Heavy-Duty — Illuminated	20A	125V	5-20R
PT8200H*	Duplex — Fed Spec Grade	15A	125V	5-15R
PT8300H*		20A	125V	5-20R
PTTR8200*	Duplex — Fed Spec Grade — Tamper-Resistant	15A	125V	5-15R
PTTR8300*		20A	125V	5-20R
PTIG8200*	Duplex — Fed Spec Grade Isolated Ground	15A	125V	5-15R
PTIG8300*		20A	125V	5-20R
PTTR62H*	Extra Heavy-Duty — Tamper-Resistant	15A	125V	5-15R
PTTR63H*		20A	125V	5-20R
PT26262HG*	Decorator	15A	125V	5-15R
PT26362HG*		20A	125V	5-20R
PTTR26262HG*	Decorator — Tamper-Resistant	15A	125V	5-15R
PTTR26362HG*		20A	125V	5-20R

### \*COLOR DESIGNATION

- I** Ivory
  - W** White
  - GRY** Gray
  - BK** Black
  - BL** Blue
  - RED** Red
  - LA** Light Almond
- Blue only available in Spec Grade Duplex Receptacles
  - For Isolated Ground (IG) Receptacles, no color designation = Orange
  - For all other receptacles, no color designation = Brown

## PlugTail™ Receptacles



Catalog Number	Description	Ratings		NEMA Config. No.
		A.	V.	
Specification Grade GFCIs (Non feed-through type)				
PT1595*	Duplex — Fed Spec Grade	15A	125V	5-15R
PT2095*		20A	125V	5-20R
PT1595NA*	NAFTA-Compliant Duplex — Fed Spec Grade I, W, LA, GRY	15A	125V	5-15R
PT2095NA*	NAFTA-Compliant Duplex — Fed Spec Grade I, W, LA, GRY, RED	20A	125V	5-20R
PT1595NTLTR*	Tamper-Resistant LED Nightlight Combination	15A	125V	5-15R
PT2095NTLTR*		20A	125V	5-20R
PT1595NTLTRNA*	NAFTA-Compliant Tamper-Resistant LED Nightlight Combination, I, W	15A	125V	5-15R
PT2095NTLTRNA*		20A	125V	5-20R
PT1595TR*	Tamper-Resistant	15A	125V	5-15R
PT2095TR*		20A	125V	5-20R
PT2095TRNA*	NAFTA-Compliant Tamper-Resistant, I, W, LA, GRY	20A	125V	5-20R
Hospital Grade GFCIs (Non feed-through type)				
PT1595HG*	Duplex	15A	125V	5-15R
PT2095HG*		20A	125V	5-20R
PT2095HGNA	NAFTA-Compliant Duplex, I, W, LA, GRY, RED	20A	125V	5-20R
PT1595HGNTLTR*	Tamper-Resistant LED Nightlight Combination	15A	125V	5-15R
PT2095HGNTLTR*		20A	125V	5-20R
PT1595HGNTLTRNA*	NAFTA-Compliant Tamper-Resistant LED Nightlight Combination, I, W	15A	125V	5-15R
PT2095HGNTLTRNA*	NAFTA-Compliant Tamper-Resistant LED Nightlight Combination, I, W, RED	20A	125V	5-20R
PT1595HGTR*	Tamper-Resistant	15A	125V	5-15R
PT2095HGTR*		20A	125V	5-20R
PT2095HGNA*	NAFTA-Compliant Tamper-Resistant I, W, LA, GRY, RED	20A	125V	5-20R
Surge Protection Devices — Audible Alarm with LED Indicator				
PT5262*SP	Duplex — Extra Heavy-Duty	15A	125V	5-15R
PT5362*SP		20A	125V	5-20R
PTIG5262*SP	Duplex — Isolated Ground	15A	125V	5-15R
PTIG5362*SP		20A	125V	5-20R
PTTR5262*SP	Duplex — Tamper-Resistant	15A	125V	5-15R
PTTR5362*SP		20A	125V	5-20R
PT8200*SP	Hospital Grade — Extra Heavy-Duty	15A	125V	5-15R
PT8300*SP		20A	125V	5-20R
PTIG8200*SP	Hospital Grade — Isolated Ground	15A	125V	5-15R
PTIG8300*SP		20A	125V	5-20R
PTTR8200*SP	Hospital Grade — Tamper-Resistant	15A	125V	5-15R
PTTR8300*SP		20A	125V	5-20R

### \*COLOR DESIGNATION

**I** Ivory  
**W** White  
**GRY** Gray  
**BK** Black  
**BL** Blue  
**RED** Red  
**LA** Light Almond

1. Blue only available in Spec Grade Duplex Receptacles
2. For Isolated Ground (IG) Receptacles, no color designation = Orange
3. For all other receptacles, no color designation = Brown

**Third-Party  
Compliance**  
 cULus Listed,  
 File Number  
 E140596, Standard  
 UL498, Federal  
 Specification WC596  
 for receptacles and  
 WS896 for switches.

## PlugTail™ Switches and Sensors



CATALOG NUMBER	COLOR	AMP
<b>Single Pole Toggle Switches</b>		
PT15AC1*	White, Ivory, Light Almond, Gray, Red, Brown, Black	15
PT15AC1*347		
PT20AC1*	White, Ivory, Light Almond, Gray, Red, Brown, Black	20
PT20AC1*347		

### Three-Way Toggle Switches

PT15AC3*	White, Ivory, Light Almond, Gray, Red, Brown, Black	15
PT15AC3*347		
PT20AC3*	White, Ivory, Light Almond, Gray, Red, Brown, Black	20
PT20AC3*347		

### Single Pole Lighted Toggle Switches

PT15AC1*SL	Clear, Ivory, White, Black	15
PT20AC1*SL		20

### Three-Way Lighted Toggle Switches

PT15AC3*SL	Clear, Ivory, White, Black	15
PT20AC3*SL		20

### Single Pole Decorator Switches

PT2601*	White, Ivory, Light Almond, Gray, Red, Brown, Black	15
PT2621*		20

### Three-Way Decorator Switches

PT2603*	White, Ivory, Light Almond, Gray, Red, Brown, Black	15
PT2623*		20

### Single Pole Illuminated Decorator Switches

PT2625*	White, Ivory, Light Almond, Black	20
---------	-----------------------------------	----

### Three-Way Illuminated Decorator Switches

PT2626*	White, Ivory, Light Almond, Black	20
---------	-----------------------------------	----

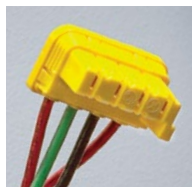


## PlugTail Sensors

CATALOG NUMBER	DESCRIPTION	VOLTAGE	LOAD
PTWSP250*	PIR Occupancy Sensor I, W, GRY, LA	120/277VAC; 60Hz	800W Max. at 120V, 1200W Max. at 277V

*COLOR DESIGNATION
<b>I</b> Ivory
<b>W</b> White
<b>GRY</b> Gray
<b>BK</b> Black
<b>RED</b> Red
<b>LA</b> Light Almond
<b>C</b> Clear
<b>—</b> Brown

## PlugTail™ Connectors and Jumpers



CATALOG NUMBER	DESCRIPTION	WIRE COLORS
<b>PlugTail Switch Connectors for Switches and Sensors</b>		
PTS6STR3	3-wire, 6" Stranded THHN12	Green, Black, Black
PTS6STR3-277	3-wire, 6" Stranded THHN12 for 277V applications	Green, Brown, Brown
PTS6SOL3	3-wire, 6" Solid THHN12	Green, Black, Black
PTS6SOL3-277	3-wire, 6" Solid THHN12 for 277V applications	Green, Brown, Brown
PTS6STR4	4-wire, 6" Stranded THHN12	Green, Red, Red, Black
PTS6STR4-277	4-wire, 6" Stranded THHN12 for 277V applications	Green, Brown, Yellow, Yellow
PTS6SOL4	4-wire, 6" Solid THHN12	Green, Red, Red, Black
PTS6SOL4-277	4-wire, 6" Solid THHN12 for 277V applications	Green, Brown, Yellow, Yellow
<b>PlugTail Connectors for Switches and Sensors with WAGO Connectors</b>		
PTS6STR3BP	3-wire, 6" Stranded THHN12	Green, Black, Black
PTS6STR3-277BP	3-wire, 6" Stranded THHN12 for 277V applications	Green, Brown, Brown
PTS6SOL3BP	3-wire, 6" Solid THHN12	Green, Black, Black
PTS6SOL3-277BP	3-wire, 6" Solid THHN12 for 277V applications	Green, Brown, Brown
PTS6STR4BP	4-wire, 6" Stranded THHN12	Green, Red, Red, Black
PTS6STR4-277BP	4-wire, 6" Stranded THHN12 for 277V applications	Green, Brown, Yellow, Yellow
PTS6SOL4BP	4-wire, 6" Solid THHN12	Green, Red, Red, Black
PTS6SOL4-277BP	4-wire, 6" Solid THHN12 for 277V applications	Green, Brown, Yellow, Yellow
<b>PlugTail Jumper</b>		
PTJ	PlugTail Tail cover for rough in	
PTJ5	PlugTail Tail cover for rough in; 5-pack	

120/277VAC; 347VAC



CATALOG NUMBER	WIRE LENGTH AND TYPE	CATALOG NUMBER	WIRE LENGTH AND TYPE
PlugTail Connectors for Receptacles			
PTRA6STR	6" Stranded THHN12	PTRA6STRBP	6" Stranded THHN12 with WAGO
PTRA6SOL	6" Solid THHN12	PTRA6SOLBP	6" Solid THHN12 with WAGO
PTRA6STRG	6" Stranded THHN12 with fork terminal on the ground		
PTRA6STRNA	NAFTA-Compliant 6" Stranded THHN12		
PTRA6SOLNA	NAFTA-Compliant 6" Solid THHN12		
PlugTail Testers			
PT-Tester	Red PlugTail Tester for Receptacles and Tails		



U.S. Patent  
No. 6,994,585

## PlugTail™ Power Pre-fabricated Wiring Systems



CATALOG NUMBER		DESCRIPTION
SINGLE GANG SINGLE CONNECTOR	DOUBLE GANG TWO CONNECTORS	
Floor Bracket Wired Assemblies with Stranded Copper Pigtails		
PSF1185825	PSF2185825	5/8" ring rise, 2-1/2" wall depth
PSF1185835	PSF2185835	5/8" ring rise, 3-1/2" wall depth
PSF1187525	PSF2187525	3/4" ring rise, 2-1/2" wall depth
PSF1187535	PSF2187535	3/4" ring rise, 3-1/2" wall depth
Floor Bracket Wired Assemblies with Solid Copper Pigtails		
PSFS1185825	PSFS2185825	5/8" ring rise, 2-1/2" wall depth
	PSFS2185835	5/8" ring rise, 3-1/2" wall depth
	PSFS2187525	3/4" ring rise, 2-1/2" wall depth
PSFS1187535	PSFS2187535	3/4" ring rise, 3-1/2" wall depth

## Metal-Box Kit



CATALOG NUMBER		DESCRIPTION
SINGLE GANG	DOUBLE GANG	
Metal-Box Kits with Stranded Copper Pigtails		
MB4S1PTSTR	MB4S2PTSTR	4 Sq. 1-1/2" Metal Box, 5/8 MR, PTR6STR
MBD4S1PTSTR	MBD4S2PTSTR	4 Sq. 2-1/8" Metal Box, 5/8 MR, PTR6STR
Metal-Box Kits with Solid Copper Pigtails		
MBD4S1PTSOL	MBD4S2PTSOL	4 Sq. 2-1/8" Metal Box, 5/8 MR, PTR6SOL

## Mud Rings



CATALOG NUMBER	DESCRIPTION	SIZE
MRC1	Mud Ring Cover	1-Gang
MRC2		2-Gang



PlugTail devices are available preinstalled in Wiremold Prewired Raceway — which installs in one-third the time of conduit wiring.



©2013 Legrand BR1271 All Rights Reserved 10113 EMA/CGXTP

designed to be better.™



#### Electrical Wiring Systems

P.O. Box 4822  
Syracuse, NY 13221-4822  
800.776.4035  
[www.legrand.us/PassandSeymour](http://www.legrand.us/PassandSeymour)

570 Applewood Crescent  
Vaughan, Ontario L4K 4B4  
905.738.9195  
[www.legrand.ca](http://www.legrand.ca)

For additional technical or application-specific information, call  
800-223-4185 or visit our website at [www.legrand.us/PassandSeymour](http://www.legrand.us/PassandSeymour).  
We're eager to put our expertise to work for you.

FOLLOW US

