

Slater® Plastic Boxes

Old Work Boxes & Shallow Boxes



S118W



S122W

NEW

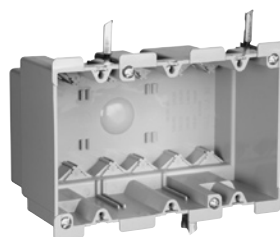
Catalog Number	Cu. In. Vol.	Description	Dimensions (inches)			Wire Fill (AWG)	Qty. Per Carton
			L	W	D		
Old Work Switch & Outlet Boxes with Quick/Click®							
S116W	16.0	Single gang. Swing-bracket for mounting adjusts from 1¼" down to ⅝". 2 Auto/Clamps® each end.	3¾	2¼	3⅝	8 No. 14 7 No. 12 6 No. 10	100
S118W	18.0	Single gang. Swing-bracket for mounting adjusts from 1¼" down to ⅝". 2 Auto/Clamps® each end.	3¾	2¼	3⅝	9 No. 14 8 No. 12 7 No. 10	100
S232W	32.0	Two gang. Swing-bracket for mounting adjusts from 1¼" down to ⅝". 4 Auto/Clamps® each end.	3¾	4⅞	3⅝	16 No. 14 14 No. 12 12 No. 10	50
S352W	52.0	Three gang. Swing-bracket for mounting adjusts from 1¼" down to ⅝". 6 Auto/Clamps® each end.	3¾	5⅞	3⅝	26 No. 14 23 No. 12 20 No. 10	10
Deep Old Work Switch & Outlet Boxes with Quick/Click®							
S122W	22.0	Single gang deep. Swing-bracket for mounting adjusts from 1¼" down to ⅝". 2 Auto/Clamps® each end.	3¾	2⅞	3½	—	50
Old Work Switch & Outlet Boxes with Threaded Mounting Holes							
P116W	16.0	Single gang. Swing-bracket for mounting adjusts from 1¼" down to ⅝". 2 Auto/Clamps® each end.	3¾	2¼	3⅝	8 No. 14 7 No. 12 6 No. 10	100
Shallow Switch & Outlet Boxes for use in limited depth applications							
P108W	8.0	Single gang. Old work flange box for retrofit applications.	3¾	2⅞	1⅞	—	20
P108N	8.0	Single gang. With vertical side bracket for new construction applications.	3¾	2⅞	1⅞	—	20

All boxes are UL listed.

UL Classified for 2 Hour Fire Resistance. (Does not apply to S232W, S352W, P108W, and P108N.)



S232W



S352W



P108N



P108W