



Custom Metal Blinds

LEVOLOR[®]

Technical Guide
Effective January 2022

Table of Contents

Color Index	3
Riviera® Specialty Metal Blinds	4
Product Guide	
Features and Options	5
Features Chart	6
Glossary of Terms	6
How to Measure / Minimum Mounting Depth	7
Care Instructions	7
How to Make a Template	8
Specifications	9
Exploded View - Mark I 1" and Mark I 1½"	10
Exploded View - Riviera® Classic 1"	11
Exploded View - Riviera® One	12
Exploded View - Riviera® ½"	13
Exploded View - Riviera® 2"	14
Warranty	See levolor.com for warranty information

Color Index














Color #	Description	*Mark I 1" Riviera® Classic 1"	**Mark I 1½"	***Riviera® One	Riviera® 2"	Riviera® ½"
Solid Finishes						
110	White	■	■	■	■	■
111	Cotton	■	■	■	■	■
112	Alabaster	■	■	■	■	■
113	White Cap	■	■	■	■	■
115	Dover	■	■	■	■	■
116	Polar Bear	■	■	■	■	■
137	Almond	■	■	■	■	■
148	Vanilla	■	■	■	■	■
201	Ivory	■	■	■	■	■
202	Blush White	■	■	■	■	■
268	Real Red	■	■	■	■	■
275	Garnet Red	■	■	■	■	■
292	Gingersnap	■	■	■	■	■
310	Sand	■	■	■	■	■
312	Greige	■	■	■	■	■
316	Malibu Sand	■	■	■	■	■
365	Mushroom	■	■	■	■	■
368	Beacon Brown	■	■	■	■	■
384	Rich Earth	■	■	■	■	■
571	Cactus Sage	■	■	■	■	■
590	Sherwood Green	■	■	■	■	■
637	China Blue	■	■	■	■	■
641	Evening Shadows	■	■	■	■	■
685	Royal Navy	■	■	■	■	■
765	Wood Violet	■	■	■	■	■
815	Birch	■	■	■	■	■
820	Squirrel Gray	■	■	■	■	■
860	Mercury	■	■	■	■	■
862	Pearl Gray	■	■	■	■	■
870	U.N. Gray	■	■	■	■	■
885	Dark Bronze	■	■	■	■	■
887	Raw Umber	■	■	■	■	■
890	Black	■	■	■	■	■
892	Low Gloss Black	■	■	■	■	■
Pearlessence Finishes						
1388	Vapor	■	■	■	■	■
1389	Golden Mist	■	■	■	■	■
Opulescence Finishes						
1392	Quartz White	■	■	■	■	■
1393	Glazed Bisque	■	■	■	■	■
Metallic Finishes						
31	Satin Nickel	■	■	■	■	■
34	Brushed Aluminum	■	■	■	■	■
915	Copperite	■	■	■	■	■
968	Ash Bronze	■	■	■	■	■
1440	Cityscape	■	■	■	■	■
1441	Galleria	■	■	■	■	■
1443	Brass	■	■	■	■	■
Tiltone						
5885	Dark Bronze/Dover	■	■	■	■	■
SheerView (Available with Cordless Mark I, Mark I, Riviera Classic 1" and Riviera Specialty Shapes)						
34	Brushed Aluminum	■	■	■	■	■
110	White	■	■	■	■	■
112	Alabaster	■	■	■	■	■
885	Dark Bronze	■	■	■	■	■
892	Low Gloss Black	■	■	■	■	■

*Includes: Cordless Mark I LightMaster, Mark I LightMaster, Cordless Mark I, Mark I, Riviera Classic 1" LightMaster, Riviera Classic 1", Riviera Specialty Shapes

**Includes: Cordless Mark I 1½", Mark I 1½"

***Includes: Riviera One, Riviera One LightMaster

Features and Functions

	 A Incline	 B Skylight	 D Arch	 D Half-Arch	 C A-Frame/ Inverted A-Frame	 C Double Taper, Top Wider	 E Circle, Oval	 E Polygon	 F Triangle	 F Taper, Bottom Wider	 G Taper, Top Wider	 H Double Taper, Bottom Wider	 I Top Down/ Bottom Up
Blind has full lift capability	■					■					■		■
Blind will not lift		■											
Lifts to bottom of headrail			■	■	■		■	■	■	■		■	
Lifts to top of bottomrail				■	■								
Lifts partially if mounted OM					■			■		■			
Blind has full tilt capability	■		■	■	■	■	■	■	■	■	■	■	■
Tilts 120° to 140°		■											
Headrail is curved			■	■			■						
Slats may fan at low or high peaks				■	■								
Ladders may not be evenly spaced			■	■	■		■	■	■	■	■	■	
Ladders usually end at last slat						■	■	■		■			
Vogue® valance standard	■				■	■		■	■	■	■	■	■
Template required			■	■			■	■					
Split controls recommended			■		■	■	■	■			■	■	
Both controls on same side				■						■			
Applications from vertical to 45°	■												
Applications from 45° to horizontal		■											
Wand tilt standard	■	■	■	■	■	■	■	■	■	■	■	■	■
Universal tilt and pole available	■	■	■	■	■	■	■	■	■	■	■	■	■
Smooth one-piece Riviera® headrail	■	■	■	■	■	■	■	●	●	●	■	●	■
No further assembly necessary	■	■	■	■	■	■	■	■	■	■	■	■	■

● Headrail Jointed

Basic Finishes

Solid
Tiltone

Base Pricing

Premium Slat Finishes

Pearlescence
Opulescence
Metallic
SheerView

See Specific Specialty

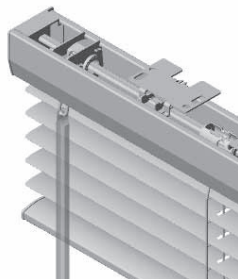
Features and Options

All Steel Components

High quality, dependable components ensure ease of operation and durability.

Clear, Hex-shaped Wand, S-hook & Sleeve

Easy grip and quality appearance.



Clear, Snap-on Wand

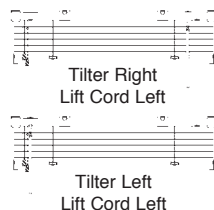
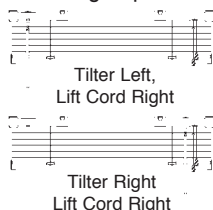
Resistant to yellowing from sunlight exposure. Snap-on design guarantees easy installation.

Concealed Installation Brackets

Brackets are hidden when blind is installed, providing a clean finished look.

Control Positions

Choice of control positions is available. Tilter left, lift cord right is the standard position. You can choose to reverse the standard position or group the controls on one side.



Cordless

Refers to patented technology that allows for easy operation of the blind without using cords to raise and lower; child and pet safe; motor mechanism and cord take up are centered in the headrail and are one piece for dependability.

Crash-Proof Cordlock

Safety feature that holds the blind securely at any level and prevents the blind from crashing to the sill while raising or lowering.

Cutouts

Allows access to air conditioners, window cranks, etc. Center and side cutouts are available. A diagram is required.

DustGuard®

DustGuard is an exclusive paint process that reduces dust build-up on blinds by over 50%. By "disrupting" the static on the blind's aluminum surface, DustGuard actually resists airborne dust particles. DustGuard is totally safe and permanent. Since it is an integral part of the surface, it lasts for the life of the blind.

Enclosed Cushion Bottomrail

A color coordinated vinyl cushion covering the entire width of the blind protects the window sill from scratches and chips.

Extension Brackets *(Must be requested at time of order.)*

For installations requiring additional space between the blind and the mounting surface. Not available with hold-down brackets.

Guardian Tilter

Provides tighter closure and disengages when over-rotated to safeguard against breakage while providing smooth operation and better quality.

Heavy Duty Headrail

Manufactured of "hardened steel," guaranteed not to rust or corrode.

Hold-down Brackets *(Must be requested at time of order.)*

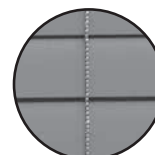
Hold-down brackets prevent blinds from swaying. They can be sill mounted, face mounted or mounted inside the frame. Recommended for doors and in windows subject to wind exposure. Not available with extension brackets.

Integrated Valance

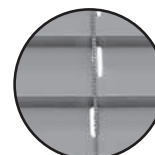
Sculpted design reduces light leakage and creates a uniform and tailored appearance. Eliminates the need for an additional valance.

LightMaster

Pull-cord holes are positioned near the back of the slat to provide more light control.



LightMaster



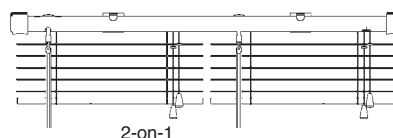
Standard

Multi-color Striping

Striping allows you to add more color to the room decor as well as match geometric designs on walls. Identify color positions of slats with a sketch. Also, specify the color of components (consider "white" for ladder and cord for uniform appearance).

Multiple Blinds on One Headrail

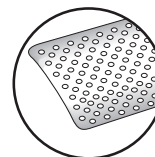
Specialty blind allowing the customer to operate 2 or 3 independent shades on one headrail. Provides the flexibility of raising one blind while keeping the other lowered on extra wide windows, such as patio doors. Standard spacing is 1/2" between blinds.



2-on-1

SheerView

SheerView provides the ability to see through a closed blind and delivers up to a 42% reduction in solar heat as compared to a fully opened blind. SheerView is available in 5 colors.

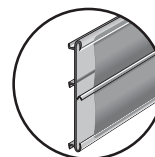


Tiltone

Tiltone blinds allow you to bring one color to the interior of your room while providing a uniform, neutral appearance on the exterior of your home. Plus, Tiltone offers additional energy savings. Indicate which side of the slat and ladder is to be covered by marking the appropriate box on the order form. Unless otherwise specified, factory will place neutral white of ladder towards window side of blind and will match color of headrail and bottomrail to decor color on slat.

Vogue® Round Wrap Valance

Innovative valance provides a sleek, finished look for the window. Two slat valance for the Riviera® 1/2" and 1" blinds and a one slat valance for the Riviera® 2" blinds.



Wand Tilt

Rotate slats open and closed, allowing for light control. This is operated by a tilt wand. The control lengths for wands may be changed from default lengths. Please refer to retail ordering system for details.

Features

	Cordless Mark I 1 1/2"	Mark I 1 1/2"	Cordless Mark I LightMaster	Cordless Mark I	Mark I LightMaster	Riviera® Classic 1" LightMaster	Mark I	Riviera® Classic 1"	Riviera® One LightMaster	Riviera® One	Riviera® 1/2"	Riviera® 2"	Riviera® Specialty Shapes
Aluminum Gauge	8	8	8	8	8	8	8	8	6	6	8	9	8
Box Brackets and Vogue® Valance						■		■			■	■	■
Concealed Installation Brackets	■	■	■	■	■		■		■	■			
Cordless Lift System	■		■	■									
Crash-Proof Cordlock		■			■	■	■	■	■	■	■	■	
DustGuard®	■	■	■	■	■	■	■	■	■	■	■	■	■
Enclosed Cushion Bottomrail	■	■	■	■	■		■						
Guardian Tilter	■	■	■	■	■	■	■	■			■	■	■
Heavy Duty Headrail	■	■	■	■	■	■	■	■	■	■	■	■	
LightMaster Feature			■		■	■			■				
Multi-color Striping	■	■	■	■	■	■	■	■			■	■	■
Multiple Blinds per Headrail	■	■	■	■	■	■	■	■			■	■	
Sculpted Integrated Valance	■	■	■	■	■		■		■	■			
SheerView				■			■	■					
Tiltone	■	■	■	■	■	■	■	■					■

Glossary of Terms

Gauge:

Thickness of the aluminum slat 6 gauge is thinner and less durable than 8 gauge or 9 gauge.

Pull/Lift Cords:

Cords that allow operation of lifting and lowering the blind. The control lengths for cords may be changed from default lengths. Please refer to retail ordering system for details

Slat Spacing:

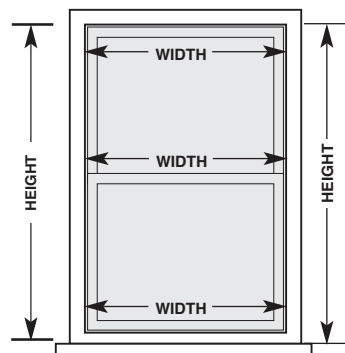
Distance between slats. The smaller the slat spacing, the tighter the blind closes, equaling more slats per foot.

How to Measure / Minimum Mounting Depth

Inside Mount (IM) Installation

To find width: Measure exact distance to the nearest $\frac{1}{8}$ " between inside surfaces of window frame at the top, middle, and bottom, and use the narrowest width. Do not make any width deductions. Factory will make appropriate deductions.

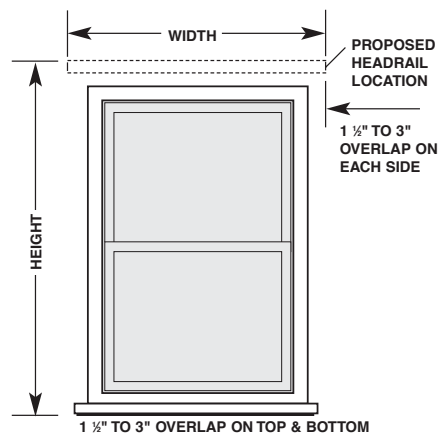
To find height: Measure exact distance to the nearest $\frac{1}{8}$ " from inside surface at top of window to sill at the left, middle and right and use the longest height. If you prefer blind not to touch sill, deduct $\frac{1}{4}$ ". If there is no sill, measure height to the point where the shade reaches.



Outside Mount (OM) Installation

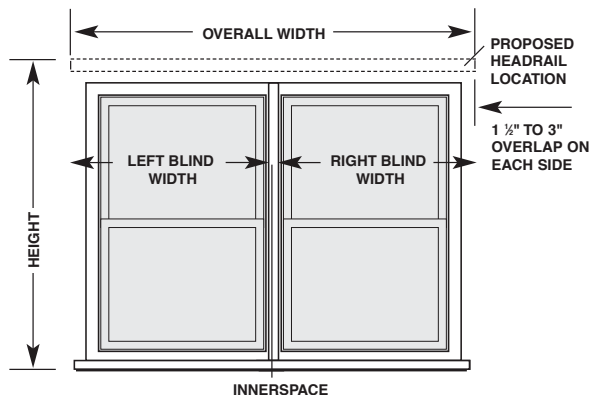
To find width: Measure exact distance to the nearest $\frac{1}{8}$ " between the outermost points where the blind is to be placed. For optimal light control, this measurement should extend $\frac{3}{4}$ " beyond the window opening on each side (or $1\frac{1}{2}$ " for the entire width).

To find height: Measure exact distance to the nearest $\frac{1}{8}$ " from where top of the blind will be located to the top of sill. If there is no sill or if blind is to overlap window frame, measure to the point the shade reaches.



2-on-1 and 3-on-1 Headrail

1. Measure overall width of the area to be covered.
2. Measure width of the area each blind is to cover. Measure and specify the left shade first, continuing to the right. **Factory will allow a minimum of $\frac{1}{2}$ " between shades for operating clearance.**
3. The total width of all shades must equal the total headrail width. If ordering a valance wider than the blind, a diagram is required.
4. To measure height, use standard inside or outside measuring procedures.



Care Instructions

To keep your Levolor® Metal Blind looking its best, periodically wipe it with a soft dust cloth, a dusting mitt, or a round brush attachment from a vacuum cleaner.

- You can clean the blind hanging in place or you can take it down.
- By tilting the slats down, but not quite closed, you'll be able to clean most of the top surface of each slat.

In a very dusty environment, just clean the blind using a sponge or dampened soft cloth.

- Use warm (not hot) water and mild detergent. The mild detergent cannot contain abrasives.
- Rinse the blind with clean water to prevent water spots.
- Place a towel on the floor or window sill to absorb any water that drips from the blind.

Please note that certain solutions and equipment are too harsh and can cause shrinkage and/or color damage to your blind. The Levolor® Lifetime-Limited Warranty does not cover damage caused by cleaning methods that use abrasive solutions or by ultrasonic cleaning machines.

How to Make a Template

The following instructions show how to make a template if the measuring instructions indicate that one is required for your window shape (Arch, Half-Arch, Circle, Oval, Polygon, or Curve blinds).

You will need the following tools:

Craft or Butcher Paper	Masking Tape
Pencil and Grease	Measuring Tape
Pencil	Carpenter's Level
Sharp Knife	Mailing Tube
Scissors	

A Tape the paper to the wall or window frame, stretching tightly to remove all folds and wrinkles. For Arch and Half-Arch blinds, cover the curved portion of the window. For Circle, Oval, or Polygon blinds cover the entire window.

B For Arch and Half-Arch blinds, measure from the sill to the beginning of the curved portion of the blind on both sides. Write each measurement in the lower left and lower right sides of the template respectively.

C Measure from the sill to the top of the window opening and write this measurement on the top of the template.

D Using the carpenter's level, draw a level line from one side of the template to the other (horizontal direction).

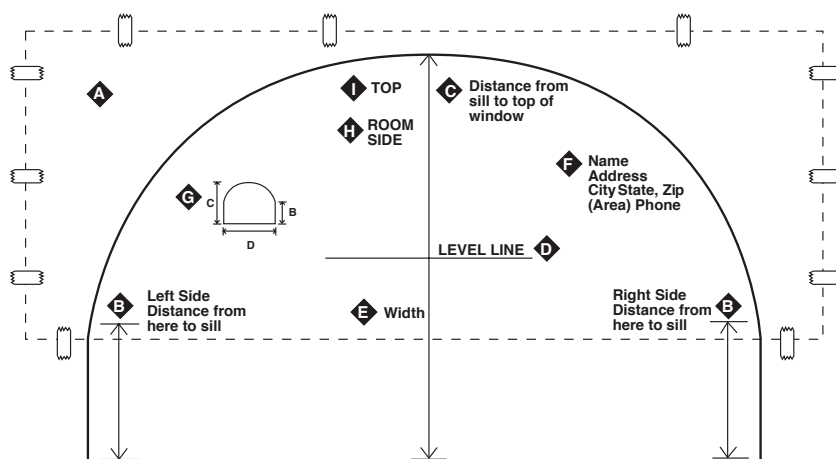
E Measure the width of the window in at least two places and write these measurements on the bottom of the template.

F Write your name, mailing address, and telephone number in the middle of the template.

G Draw a sketch of the blind in the center of the template and include dimensions on the sketch.

H Write the words ROOM SIDE in the middle of the template.

I Write the word TOP at the top of the template.

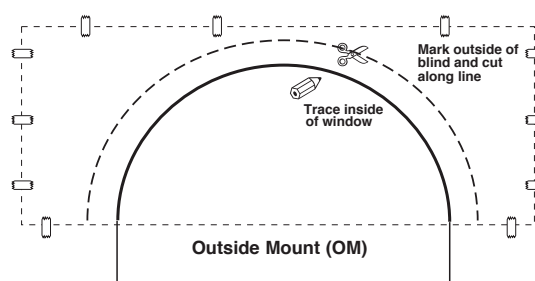
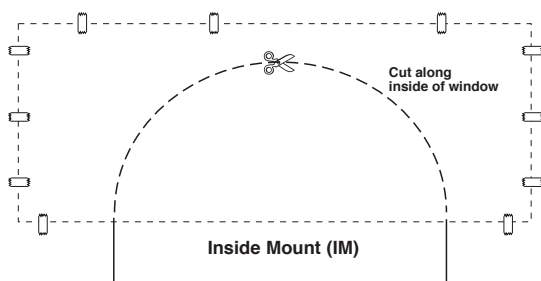


Inside Mount (IM)

For inside mount blind (IM) templates, carefully cut out the template with the sharp knife, leaving an uncut portion every 1 to 2 feet along the cut line. Finally, carefully cut the serrated pieces.

Outside Mount (OM)

For outside mount blind (OM) templates, carefully trace the outline of the window with the grease pencil, then draw in the outline of the blind as it will sit outside of the window outline. Cut the template with scissors along the outside line which the blind is to fit. Hold up the finished template to insure blind fits. Make any template size corrections at this time, or if corrections are not possible, make a new template. Roll the template (DO NOT FOLD) and send it in a mailing tube with the order.



metal blinds

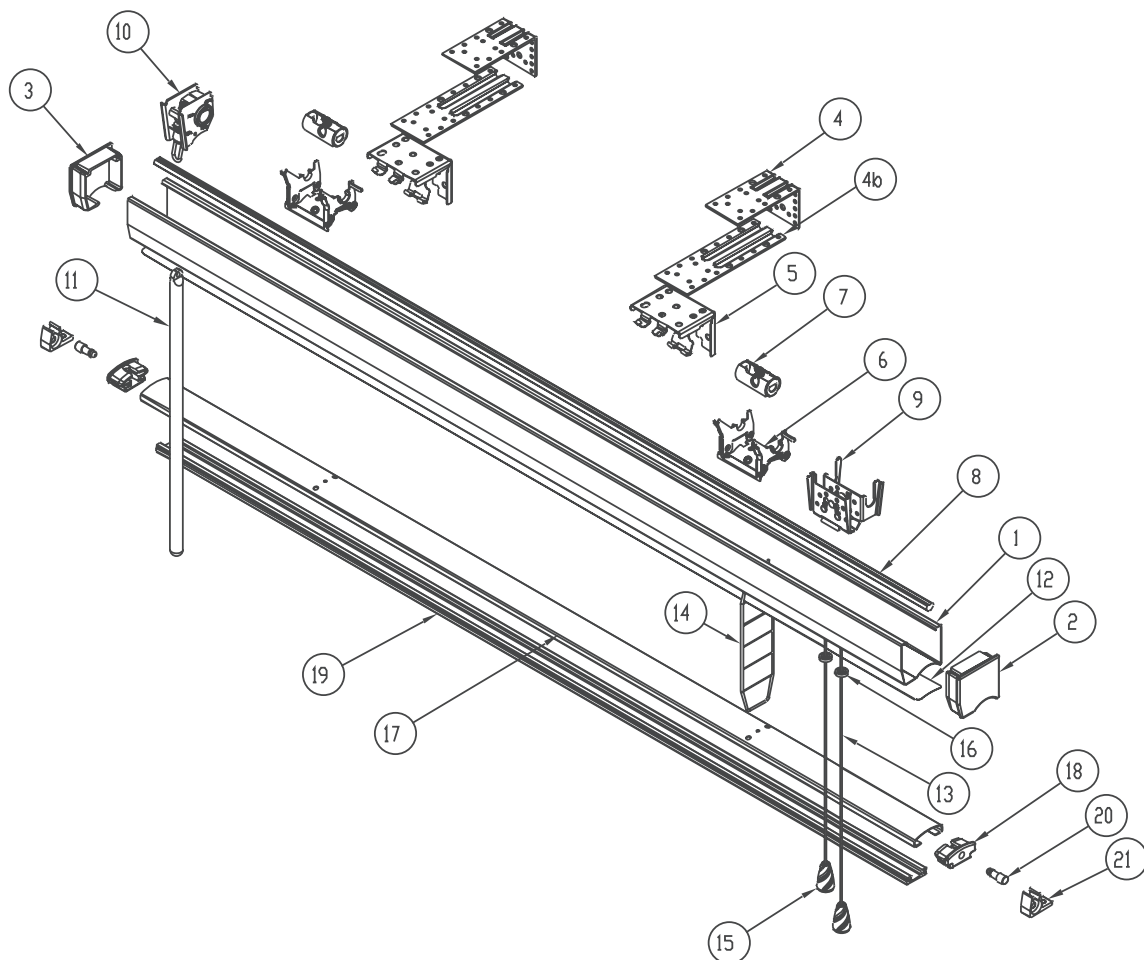
Specifications

NOTE: Blind dimensions must be equal to or less than the maximum dimensions to be within specification guidelines. **Blind dimensions are listed in inches.**

Specifications			Mark I 1½" & Mark I 1"		Riviera® Classic 1"		Riviera® ½"		Riviera® 2"		Riviera® One	
Minimum Ordered Width			Inside Mount	Outside Mount	Inside Mount	Outside Mount	Inside Mount	Outside Mount	Inside Mount	Outside Mount	Inside Mount	Outside Mount
Cordless			17	16½	N/A		N/A		N/A		N/A	
Tilt and Lift Same Side			15¾	15½	15½	15	14¾	14¼	18½	18	14½	14
Tilt and Lift Opposite Sides (Standard)			11	10½	11	10½	11	10½	12½	12	11½	11
Tilt Control Center; No Lift			7	6½	6½	6	6½	6	8½	8	9	8½
No Tilt and Lift Controls; Slats Open			5¾	5½	5	4½	5½	5	6¾	6¾	5½	5
Minimum Length												
Cordless			6		6		6		6		6	
LightMaster			6		6		N/A		N/A		6	
Cordless			6		N/A		N/A		N/A		N/A	
Maximum Ordered Width			Inside Mount	Outside Mount	Inside Mount	Outside Mount	Inside Mount	Outside Mount	Inside Mount	Outside Mount	Inside Mount	Outside Mount
2-on-1 and 3-on-1 Headrail			142	142	142	142	142	142	142	142		N/A
Cordless			142	142	142	142	142	142	142	142	96	96
LightMaster			142	142	142	142	N/A		N/A		96	96
Cordless Single Blind			100¾	100	N/A		N/A		N/A		N/A	
Cordless 2-on-1 Headrail			142	142	N/A		N/A		N/A		N/A	
Maximum Length												
Cordless			126		126		126		126		96	
LightMaster			126		126		N/A		N/A		96	
Cordless			73		N/A		N/A		N/A		N/A	
Standard Factory Deductions												
Inside Mount (IB) Headrail			⅞		¾		¾		¾		½	
Inside Mount (IB) Slat			¾		½		½		½		¾	
Outside Mount (OB) Headrail			⅞		¼		¼		¼		⅞	
Outside Mount (OB) Slat			0		0		0		0		0	
Blind Height			0		0		0		0		0	
Dimensions												
Headrail (Height X Depth)			1½ x 1¾		1 x 1⅞		¾ x 1⅞		2⅞ x 2¼		1⅞ x 1¾	
Inside Mount (IB) Bracket (Height X Depth)			⅞ x 1⅞		1⅞ x 1⅞		1⅞ x 1⅞		2⅞ x 2¼		1⅞ x 1⅞	
Outside Mount (OB) Bracket (Height X Depth)			1⅞ x 1⅞		same as IB		same as IB		same as IB		same as IB	
Bottomrail			.35 x 1.125		.38 x .76		.38 x .76		.545 x 2.08		.38 x .76	
Mounting Requirements												
Inside Mount (IB)												
Minimum Required Mounting Surface			¾		½		½		½		⅝	
Minimum Required Depth Flush Mount - No Valance			1¾		1⅞		1⅞		2½		1¾	
Minimum Required Depth Flush Mount - With Valance			N/A		2½		1¾		3		2⅞	
Outside Mount (OB)												
Minimum Required Mounting Surface			½		½		½		¾		¾	
Rail-to-mount surface clearance			¾		¼		¾		⅞		¼	
Slat end-to-mount surface clearance			⅞(1")	⅞(1⅞")	¾		¾		¼		½	
Multiple Blinds on One Headrail Spacing												
2-on-1 or 3-on-1 Standard Corded			½		½		½		½		N/A	
2-on-1 or 3-on-1 LightMaster			½		½		N/A		N/A		N/A	
2-on-1 or 3-on-1 Cordless			½		N/A		N/A		N/A		N/A	
Stacking Heights			Inside Mount	Outside Mount								
Stacks To			1"	1⅞"								
3"			36¾	48¼	54		55¾		N/A		91	
3.5"			55	72¼	71		71½		21¾		N/A	
4"			72¼	96	88		87¼		40¾		N/A	
4.5"			91½	120	105		103		58¾		N/A	
5"			9¾	N/A	122		118¾		77¼		N/A	
5.5"			N/A		N/A		N/A		95¾		N/A	
6"			N/A		N/A		N/A		114¼		N/A	
Valance Return Lengths												
Standard			N/A		1¾		1¾		1¾			
With Extension Brackets			N/A		5½		5½		5½			

N/A = Not Available

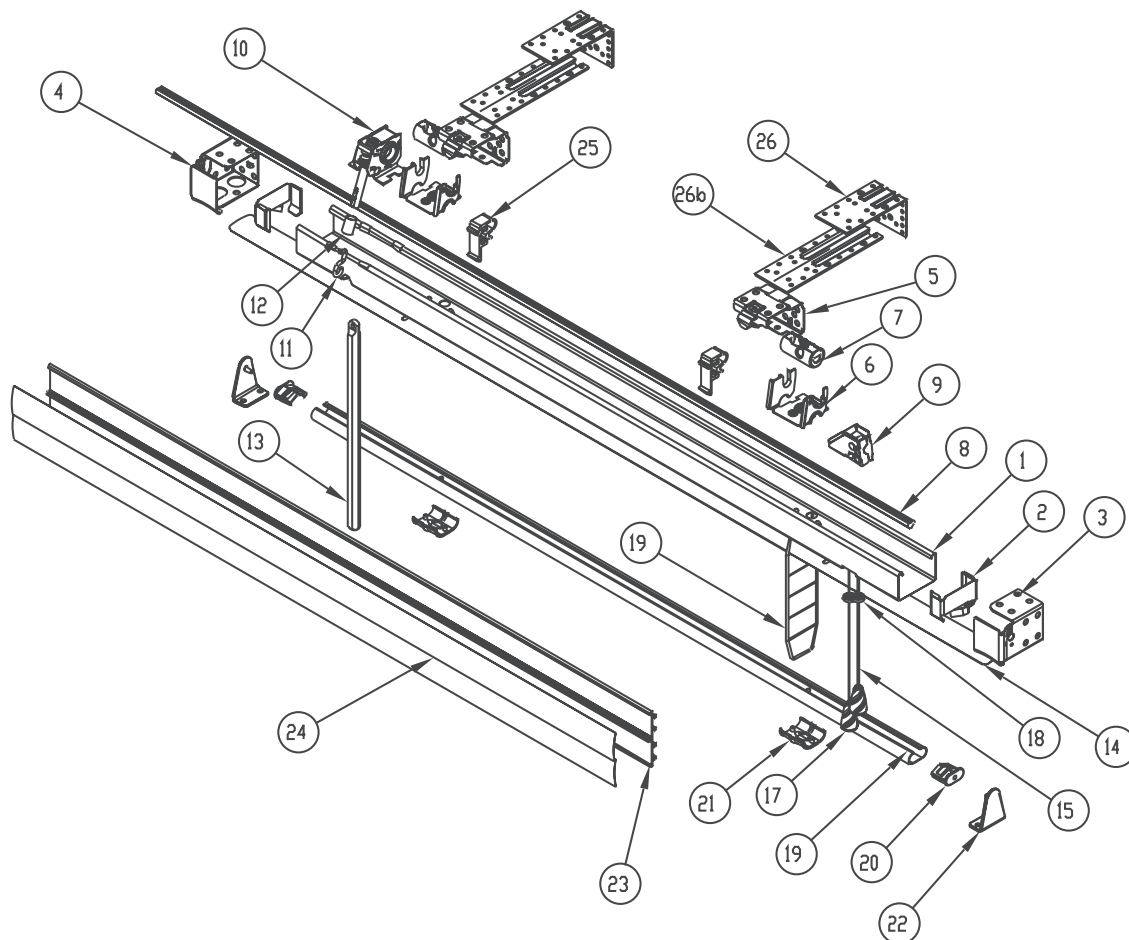
metal blinds: mark I 1" and 1^{3⁄8}" - exploded view



Mark I 1" and 1^{3⁄8}"

Item	Part Description	Part Number
1	HEADRAIL	G19M0300
2	HEADRAIL END CAP - RIGHT	G09U5200
3	HEADRAIL END CAP - LEFT	G09U5100
4	EXTENSION BRACKET	HBEX0013
4b	EXTENSION BRACKET PLATE	HBEX0014
5	UNIVERSAL MOUNTING BRACKET	HBCK0096
6	CRADLE	G13C0001
7	DRUM	K13Y0000
8	TILT ROD	E20P0300
9	CORDLOCK ASSEMBLY	G10P0000
10	TILTER ASSEMBLY	G11M0000
11	WAND	G20M0000
12	SLAT	S81D0000
13	CORD	C8800000
14	LADDER	T17Y0000
15	TASSEL	HGTS0001
16	SAFETY CORD STOP	DDW30445
17	BOTTOMRAIL	G19M0300
18	BOTTOMRAIL END CAP	G27M0000
19	BOTTOMRAIL BUMPER	G19M5400
20/21	HOLD-DOWN KIT	G12P9900

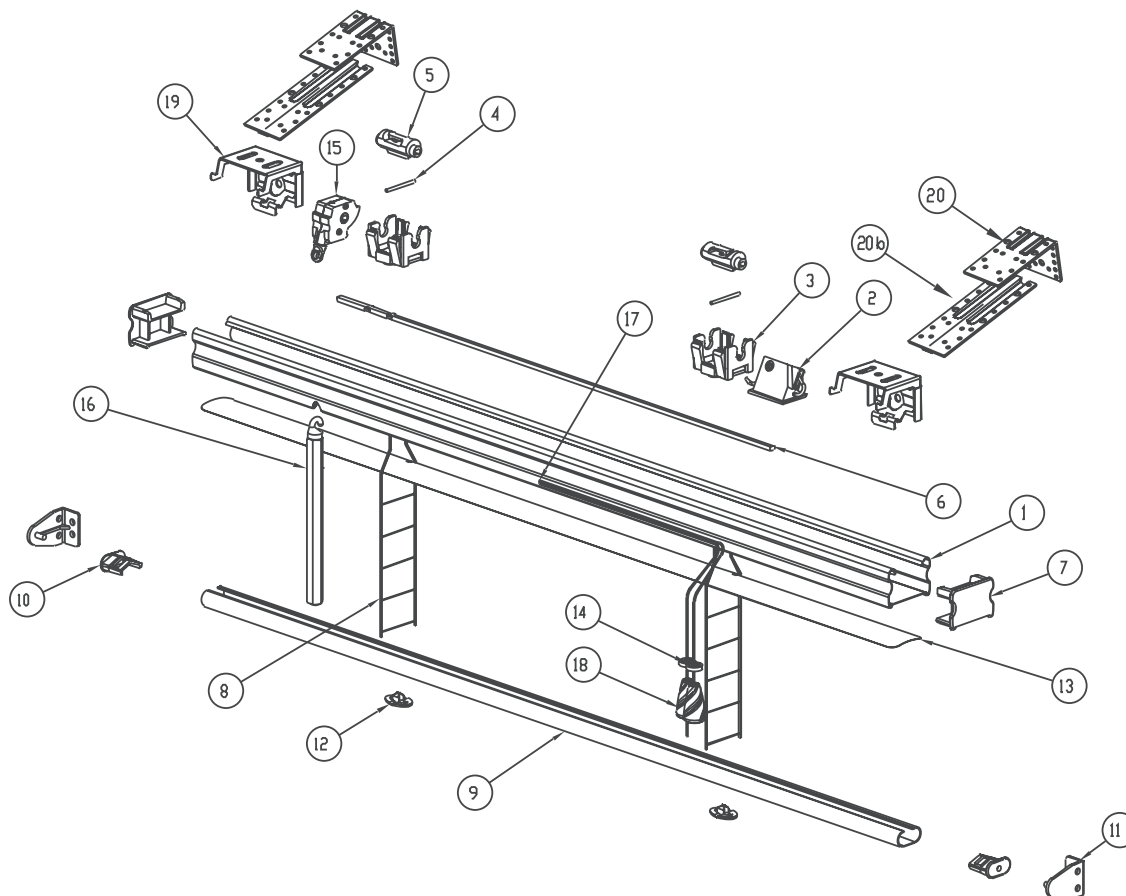
metal blinds: riviera® classic 1" - exploded view



Riviera® Classic 1"

Item	Part Description	Part Number
1	HEADRAIL	K50A0300
2	END BRACE	K09E0400
3	BOX BRACKET - RIGHT	K01E0200
4	BOX BRACKET - LEFT	K01E0200
5	INTERMEDIATE SUPPORT BRACKET	K16F0000
6	CRADLE	K13C0000
7	DRUM	K13Y0000
8	TILT ROD	E20P0300
9	CORDLOCK ASSEMBLY	K10K0000
10	TILTER ASSEMBLY	K11A0000
11	TILTER - S-HOOK	K11B3700
12	TILTER - SLEEVE	K11B2800
13	WAND	K20W0000
14	SLAT	S81D0000
15	CORD	C8800000
16	LADDER	T17Y0000
17	TASSEL	HGTS0001
18	SAFETY CORD STOP	DDW30445
19	BOTTOMRAIL	K19B0300
20	BOTTOMRAIL END CAP	DY038310
21	LADDER CAP	K23C0000
22	HOLD-DOWN KIT	DJL01873
23	VALANCE FRAME	K17F5120
24	VALANCE SLAT	S81D0000
25	VALANCE CLIP	U17C0000
26	EXTENSION BRACKET	HBEX0013
26b	EXTENSION BRACKET PLATE	HBEX0014

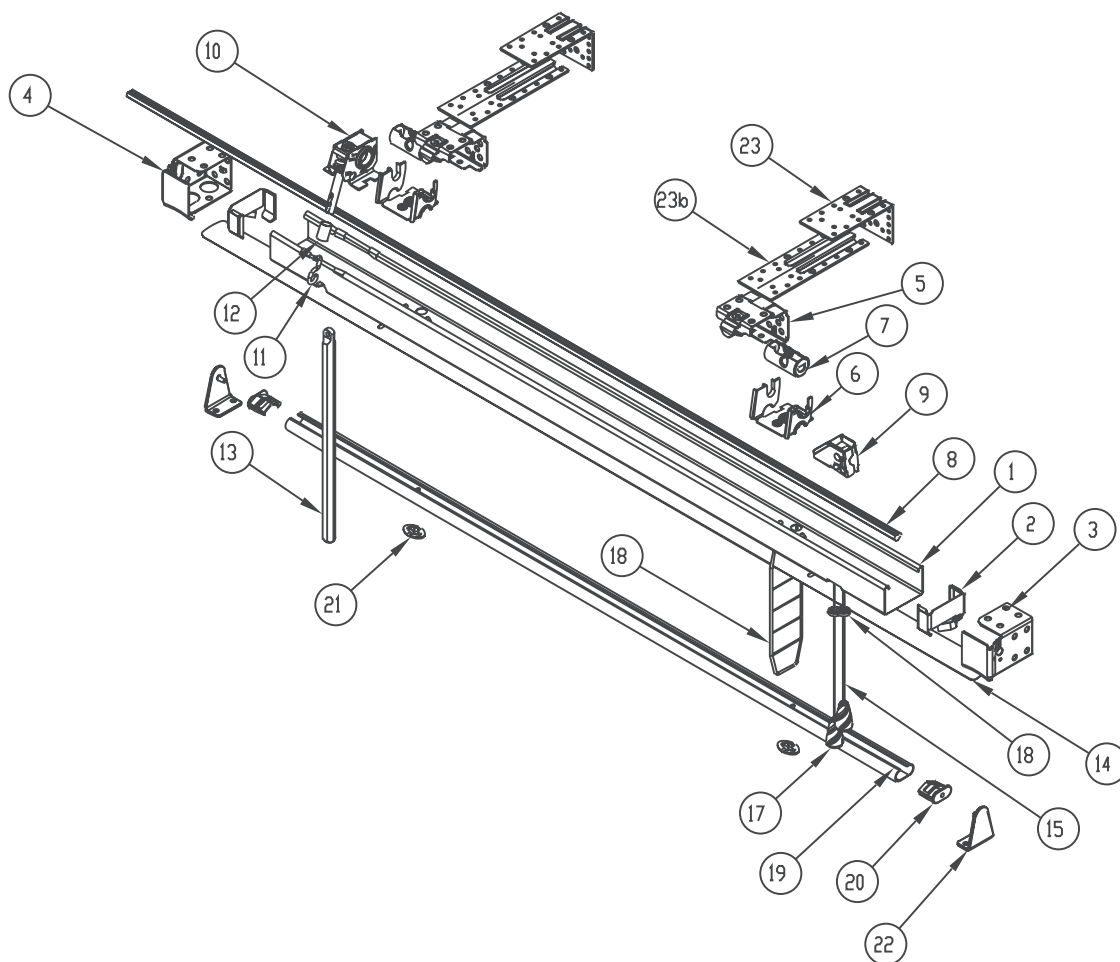
metal blinds: riviera® one - exploded view



Riviera® One

Item	Part Description	Part Number
1	HEADRAIL	RAHR0023
2	CORD LOCK	HMCL0032
3	CRADLE	HMCD0006
4	PIN, SIS CRADLE	HFPN0012
5	DRUM	HMDR0009
6	ROD	RRTE0010
7	END CAP, HEADRAIL	HGEC0041
8	LADDER CORDS	T17Y0000
9	BOTTOMRAIL	K19B0300
10	END CAP, BOTTOMRAIL	DY038310
11	HOLD DOWN	E12F0000
12	LADDER CAP	Y23C0001
13	SLAT, 1" METAL	S71D0000
14	SAFETY CORD STOP	DDW30445
15	TILTER	HMTL0024
16	WAND	HGWN####
17	LIFT CORDS	C8800000
18	TASSEL	HGTS0001
19	BRACKET	HBCK0098
20	EXTENSION BRACKET	HBEX0013
20b	EXTENSION BRACKET PLATE	HBEX0014

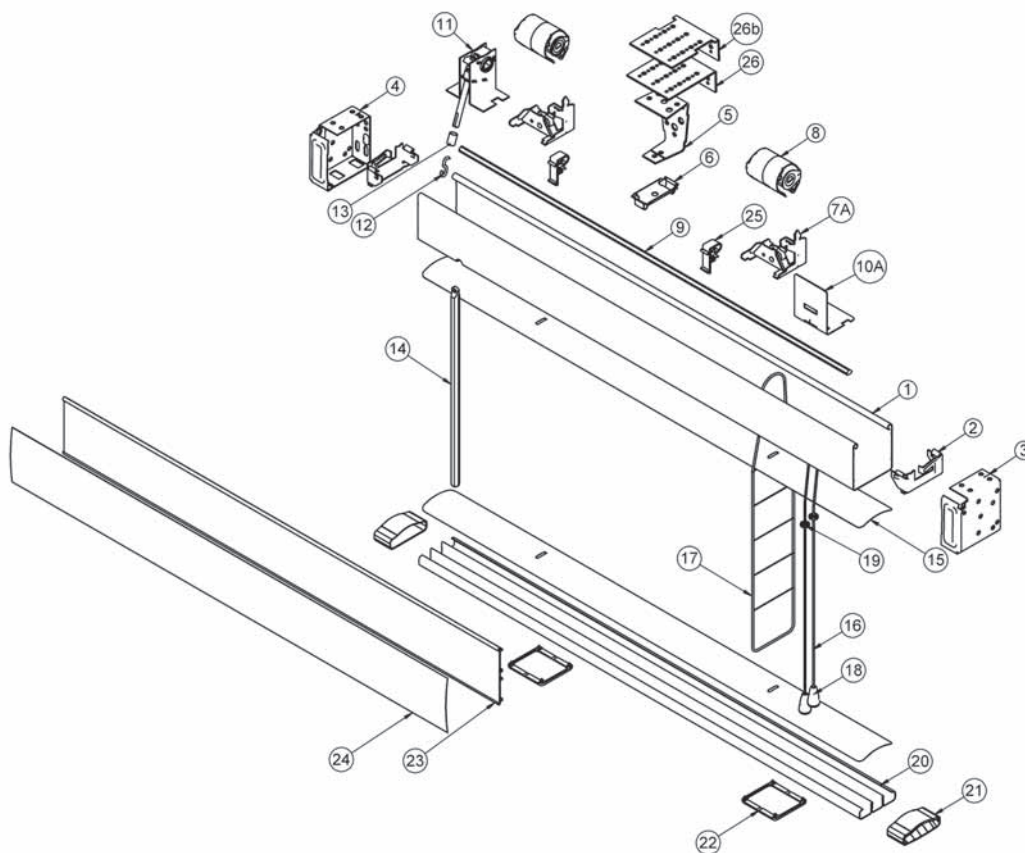
metal blinds: riviera® ½" - exploded view



Riviera® ½"

Item	Part Description	Part Number
1	HEADRAIL	K50A0300
2	END BRACE	K09E0400
3	BOX BRACKET - RIGHT	K01E0200
4	BOX BRACKET - LEFT	K01E0200
5	INTERMEDIATE SUPPORT BRACKET	K16F0000
6	CRADLE	K13C0000
7	DRUM	K13Y0000
8	TILT ROD	E20P0300
9	CORDLOCK ASSEMBLY	K10K0000
10	TILTER ASSEMBLY	K11A0000
11	TILTER - S-HOOK	K11B3700
12	TILTER - SLEEVE	K11B2800
13	WAND	K20W0000
14	SLAT	S51D0000
15	CORD	C8800000
16	LADDER	T15R0000
17	TASSEL	HGTS0001
18	SAFETY CORD STOP	DDW30445
19	BOTTOMRAIL	K19B0300
20	BOTTOMRAIL END CAP	DY038310
21	LADDER CAP	Y23C0001
22	HOLD-DOWN KIT	DJL01873
23	EXTENSION BRACKET	HBEX0013
23b	EXTENSION BRACKET PLATE	HBEX0014

metal blinds: riviera® 2" - exploded view



Riviera® 2"

Item	Part Description	Part Number
1	HEADRAIL	E50L0300
2	END BRACE	E09U2000
3	BOX BRACKET - RIGHT	E01A0400
4	BOX BRACKET - LEFT	E01A0400
5	INTERMEDIATE SUPPORT BRACKET	B16A0000
6	TOP BRACE	E09T0000
7A	CRADLE - RIGHT PULLEY	H13T0000
7B	CRADLE - LEFT PULLEY	H13T7000
8	DRUM	H13D0000
9	TILT ROD	E20P0300
10A	CORDLOCK ASSEMBLY - RIGHT	H10S0000
10B	CORDLOCK ASSEMBLY - LEFT	H10S7000
11	TILTER ASSEMBLY	E11W0000
12	TILTER - S-HOOK	K11B3700
13	TILTER - SLEEVE	K11B2800
14	WAND	K20W0000
15	SLAT	S02D0000
16	CORD	C9800000
17	LADDER	T19K0000
18	TASSEL	HGTS0001
19	SAFETY CORD STOP	DDW30445
20	BOTTOMRAIL	E19R0300
21	BOTTOMRAIL END CAP	E29C0000
22	LADDER CAP	H23P0000
23	VALANCE FRAME	K17F7300
24	VALANCE SLAT	S08D0000
25	VALANCE CLIP	U17C0000
26	2" EXTENSION BRACKET	L01X2000
26b	4" EXTENSION BRACKET	L02X4000
NS	HOLD-DOWN KIT (NOT SHOWN)	G12P9900

