

CARE AND MAINTENANCE

To remove dust from your fabric sofabed.Brush delicately using a brush with soft bristles or use a vacuum cleaner at a medium power output setting using the most suitable accessory supplied with the cleaner and taking care not to rub the accessory directly on the covering. To maintain the aesthetic appearance it is advisable to treat each stain before it is absorbent excessively. This will avoid prolonged or abrasive treatments being required.

NOTICE

- * Please make sure that you have all parts indicated before you begin assembly on this item.
- * This item should be assembly on a soft surface to prevent scratching/dirty the surface during assembly.
- * This item may require periodic tightening.

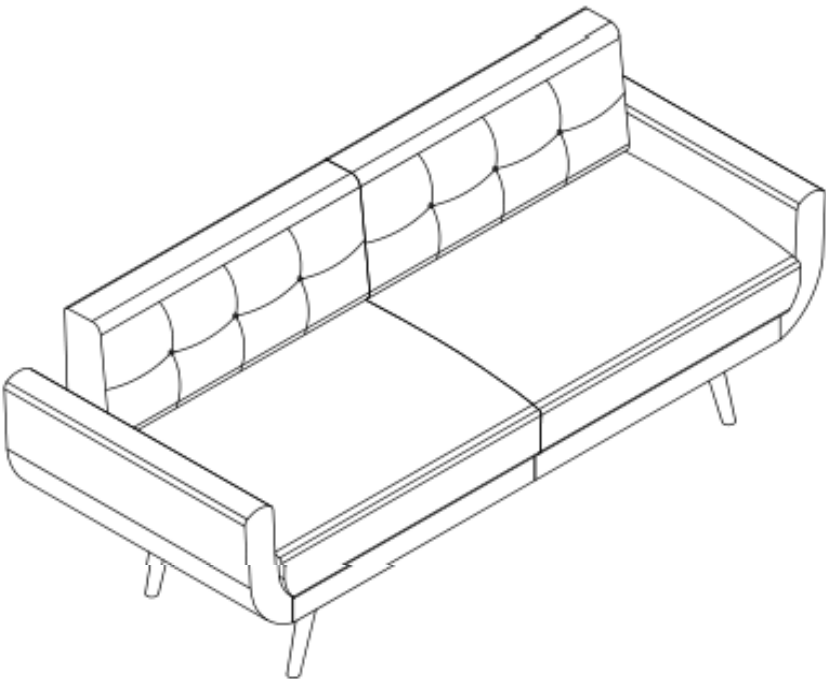
Part List

PIECE	DESCRIPTION	PICTURE	QUANTITY
A	Sofabed		1X
B	Armrest left		1X
C	Armrest right		1X
D	Middle support leg		2X
E	Leg		4X
HW1	Thread Stud 8x1.25x90mm		8X
HW2	Socket Screws 8x1.25x75mm		4X
HW3	Socket Screws 6x1.27x12.7mm		8X
HW4	Flat Washer 8x22mm		8X
HW5	Flat Washer 8x17mm		4X
HW6	Allen key 5mm		1X
HW7	Allen key 4mm		1X
HW8	Hex Nut 8x13mm		8X
HW9	Open end wrench		1X



ITEM NO.:LVS2006

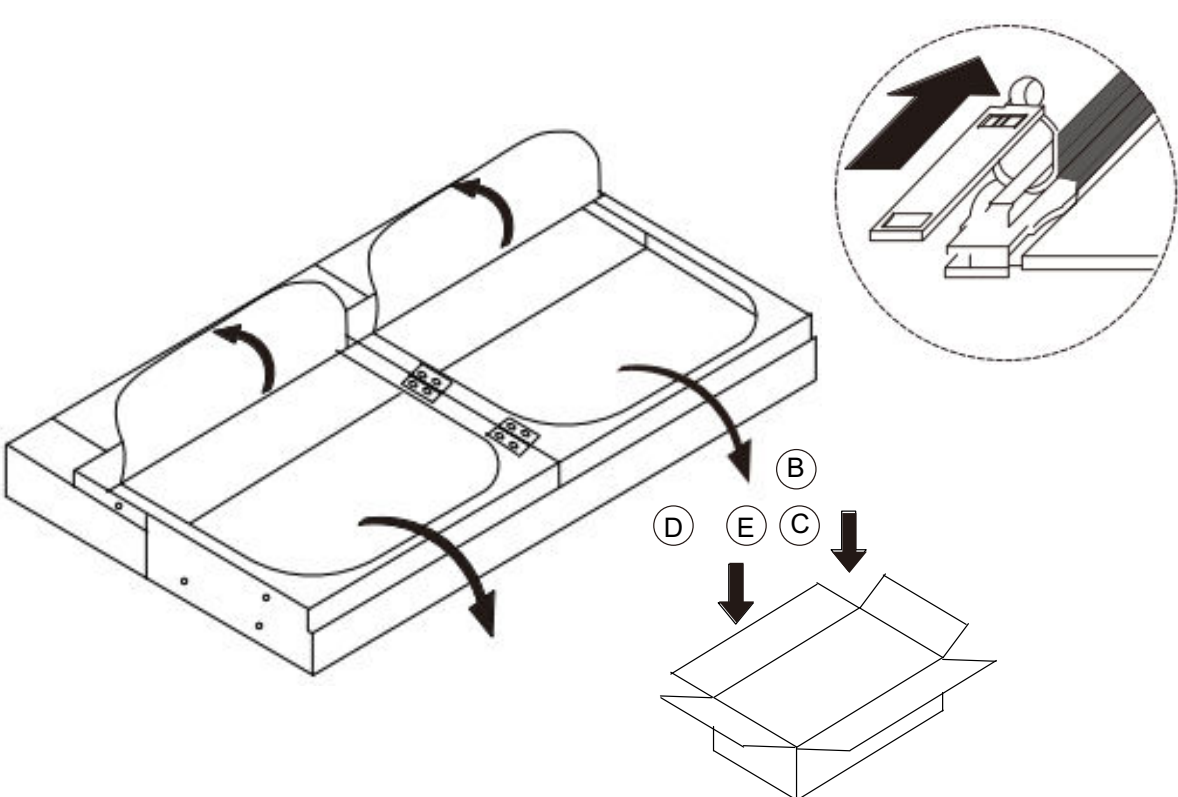
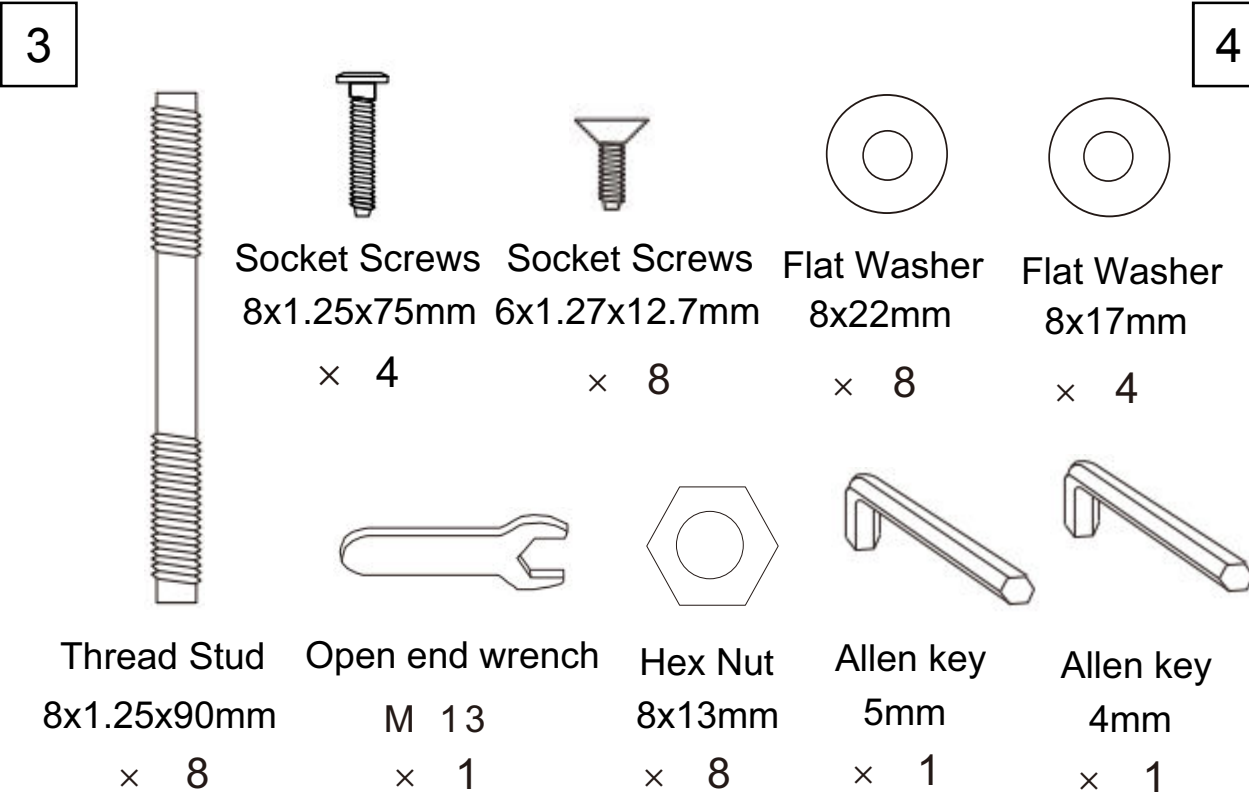
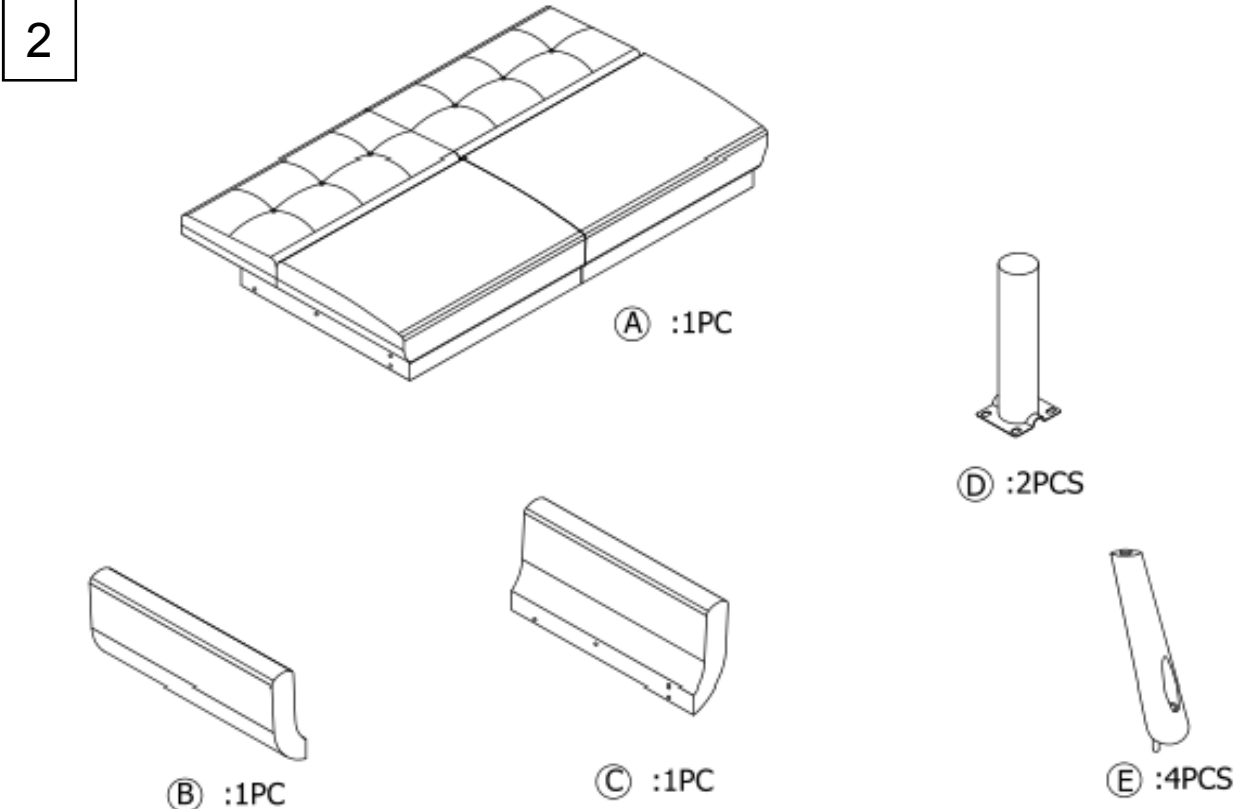
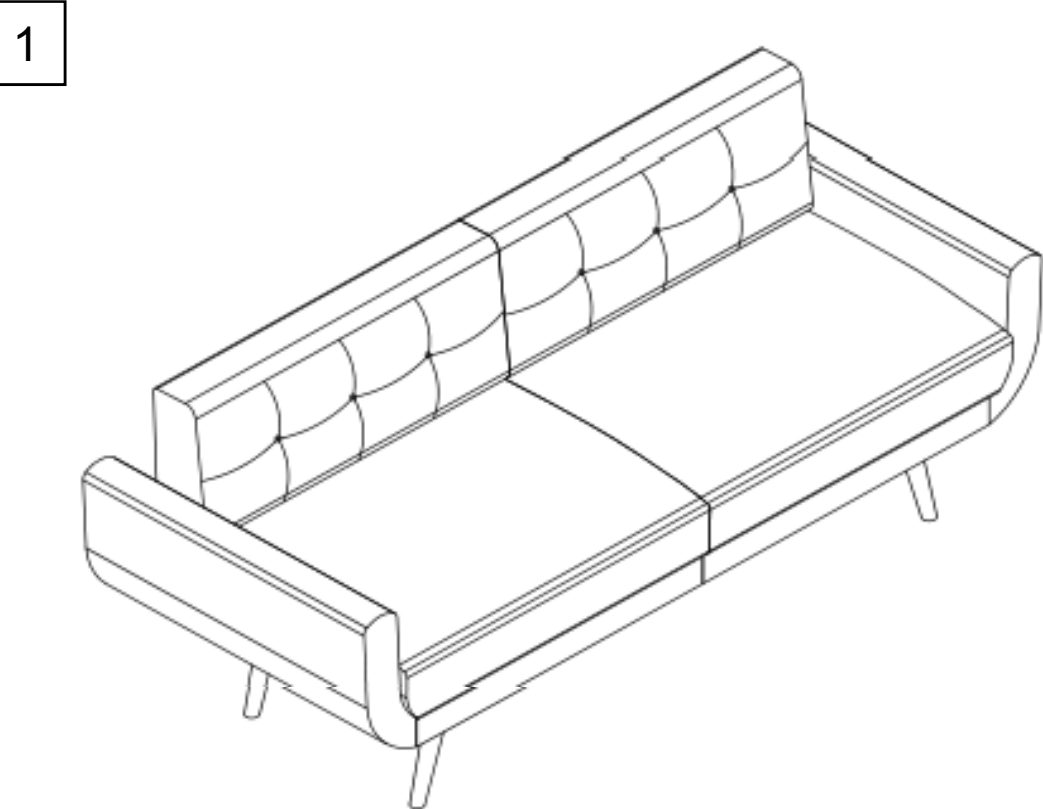
Item Dimension: 82.7"Wx33.5"Dx34.6"H
Item Weight Capacities : 550LBS



PREPARATION

Before beginning assembly of product, make sure all parts are present. Compare parts with package contents list. If any part is missing or damaged, do not attempt to assemble the product.

EstimatedAssemblyTime: 15 minutes.

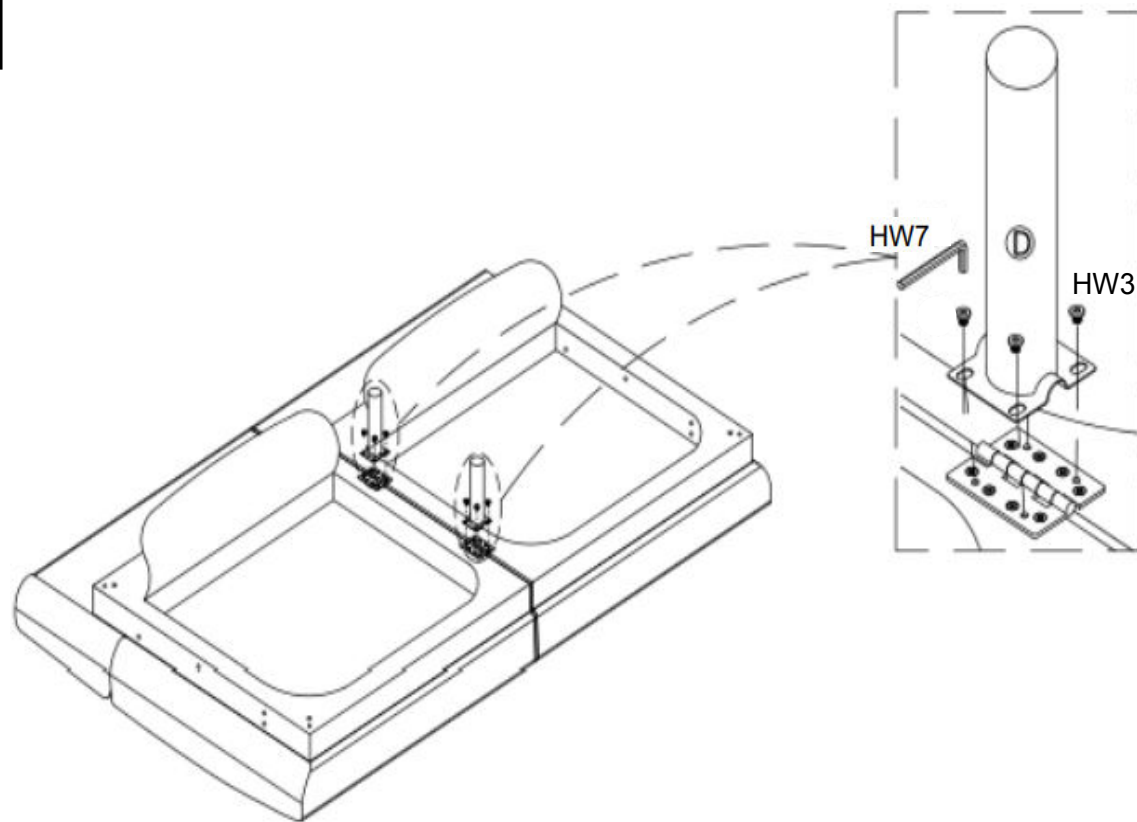


PREPARATION

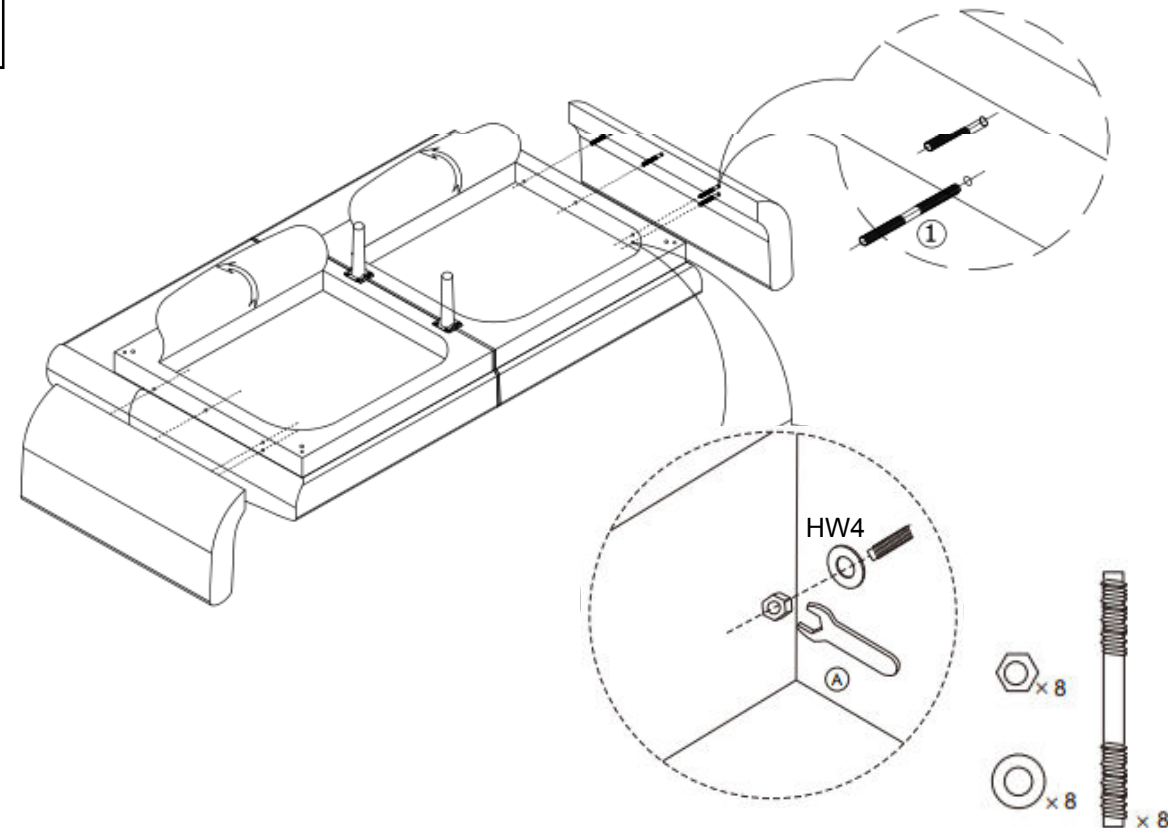
Before beginning assembly of product, make sure all parts are present. Compare parts with package contents list. If any part is missing or damaged, do not attempt to assemble the product.

Estimated Assembly Time: 15 minutes.

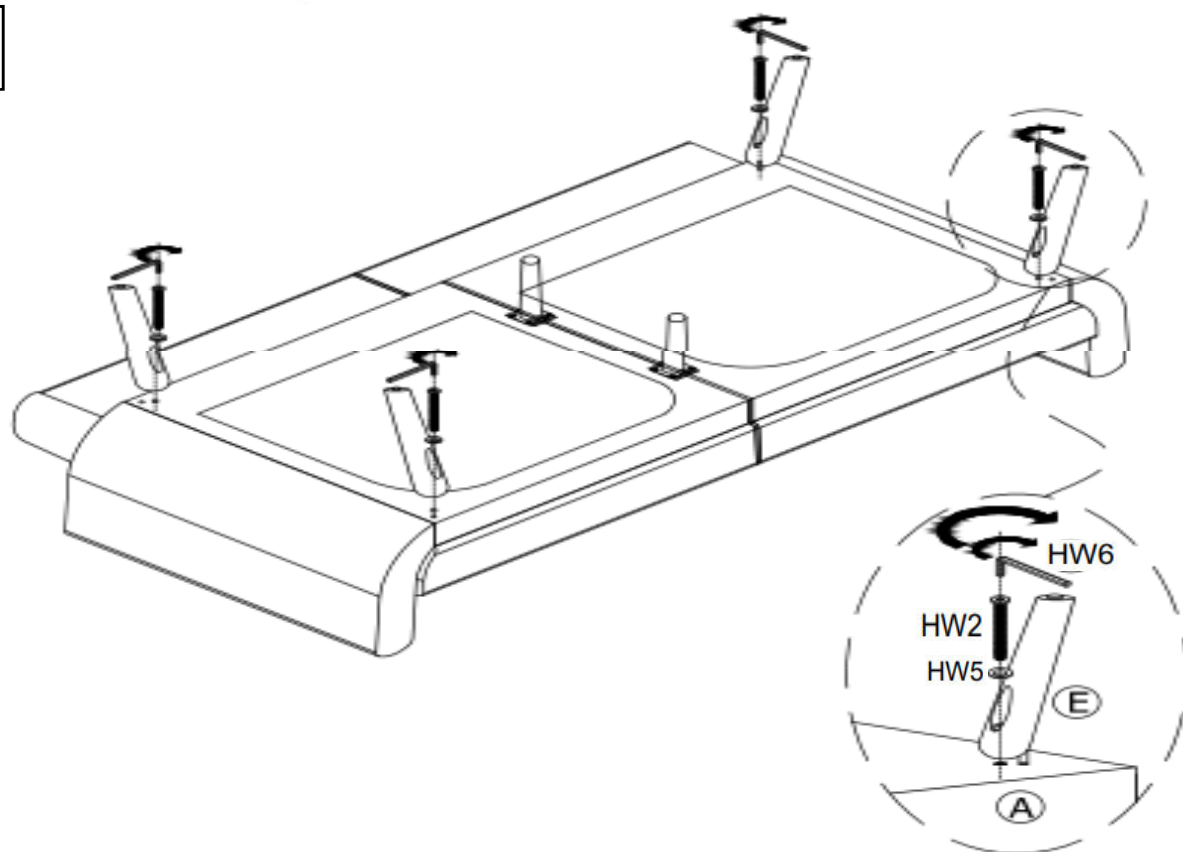
5



6



7



8

