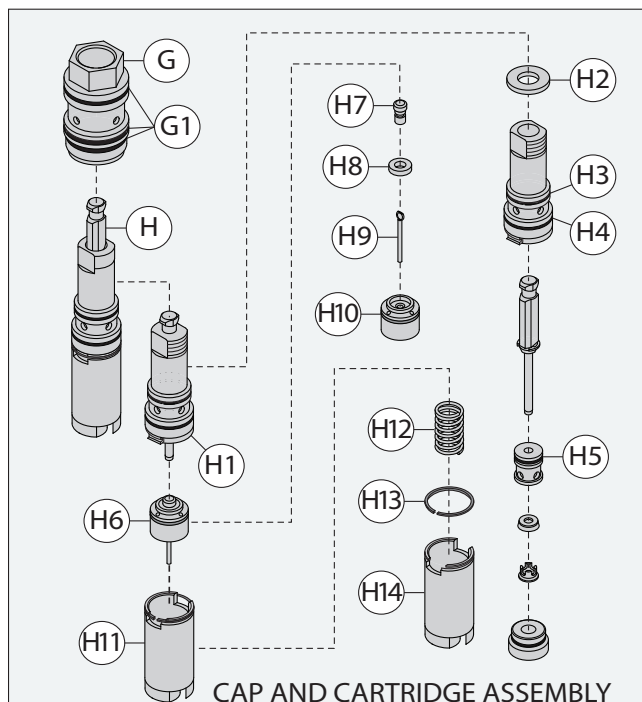
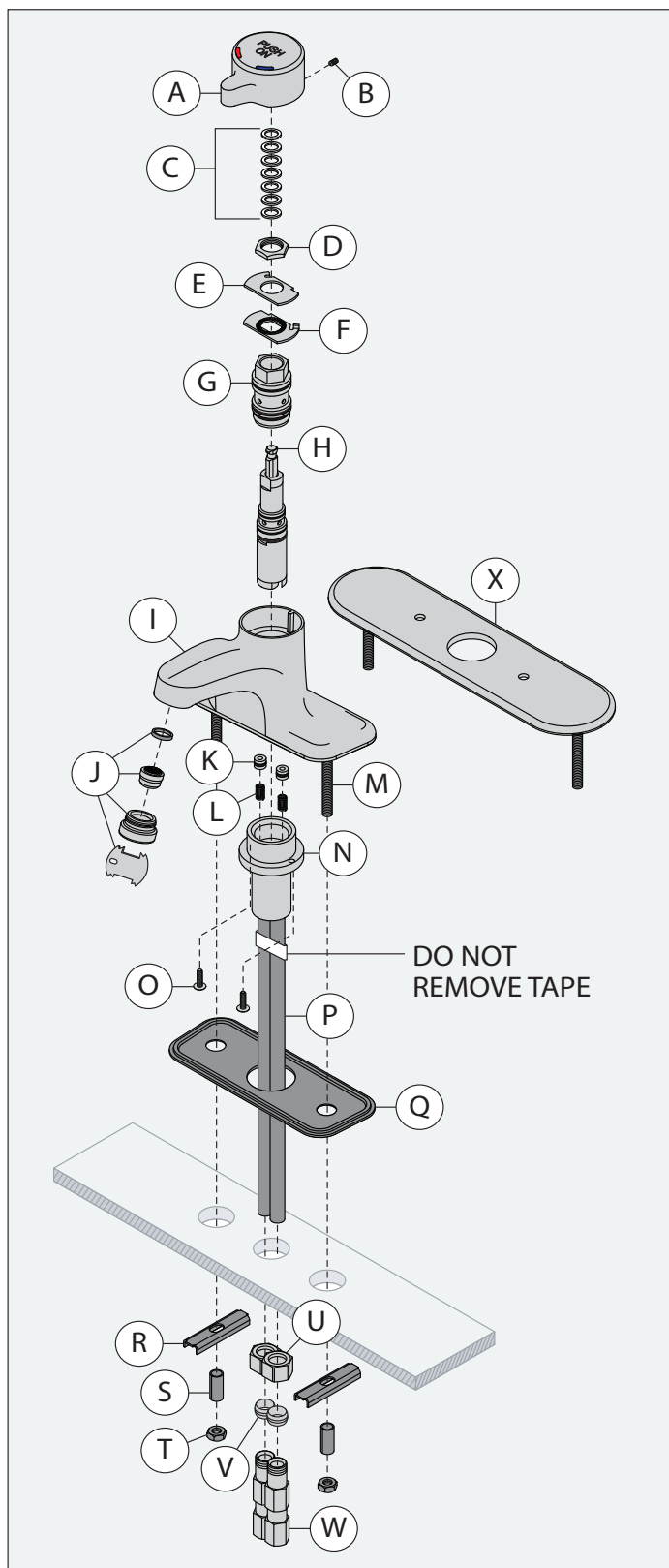


Parts Breakdown



Replacement Parts

Item	Description	Part Number
A	Handle	RL-290
B	Set Screw	LL-27
C	Cycle Timing Washers (7)	LL-28
D	Nut	RL-268
E	Limit Stop Washer	
F	Limit Stop Washer, Fixed	
G	Upper Housing	LL-3N
G1	Upper Housing O-rings (3)	LL-48
G1	Upper Housing O-rings (3)	RL-272
H3	Cartridge O-ring	
H4	Cartridge O-ring	
H5	Guide O-ring	
H10	Piston Quadring	
H	Cartridge	LL-1A
	Quick Closing Cartridge	LL-1B
H1	Control Spindle Kit	RL-266
H2	Thrust Washer	LL-35
H6	Piston Assembly	LT-4AA
H11	Piston Spring/Cylinder	RL-267
J	0.5 gpm Vandal Resistant Aerator Kit with Key	RL-292
K	Check	RL-269
L	Spring	
Q	Mounting Gasket	SPF-KIT
R	Mounting Bracket	
S	Spacer	
T	Mounting Nut	
W	Check/Screen Assembly	LL-71B
X	8" Deck Plate	RL-291

Notes: 1) Apply plumber tape to all threaded connections.
2) Compression nuts (U) and ferrules (V) not included.