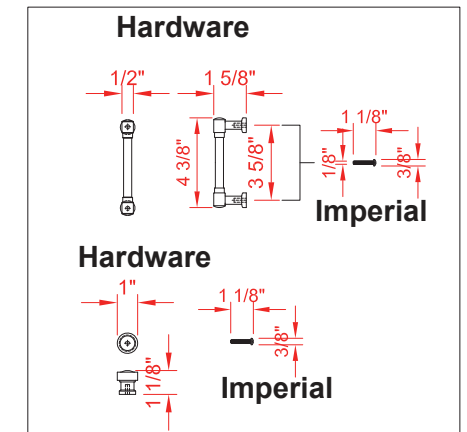
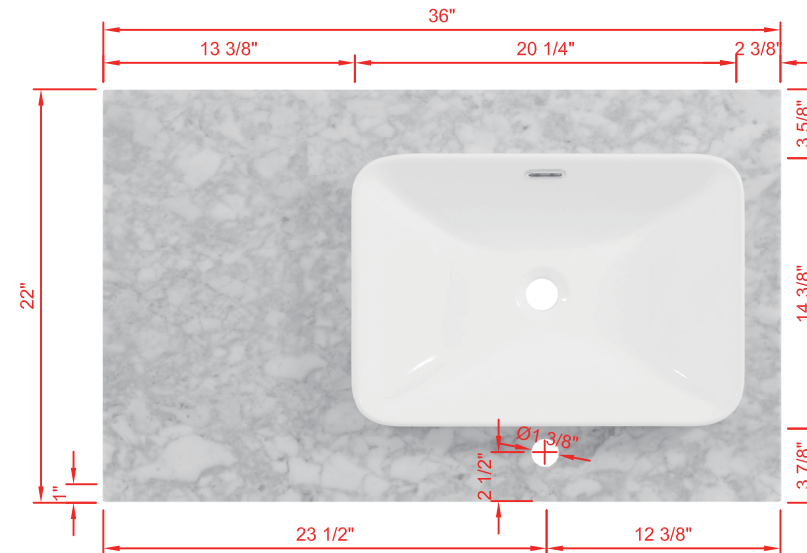
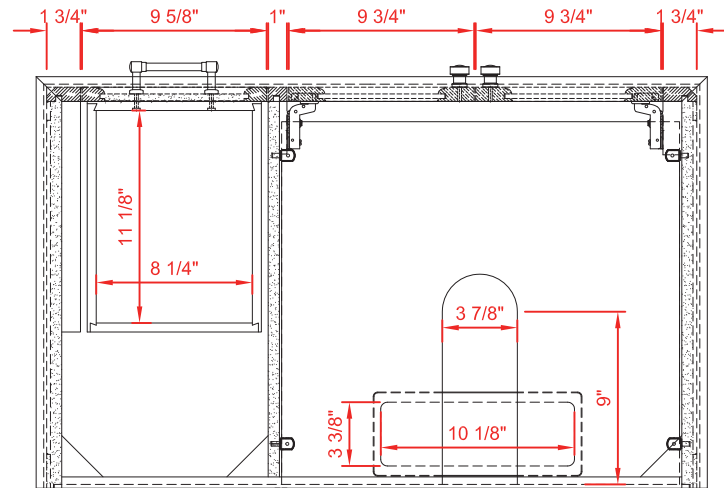


**INSTALLERS DIAGRAM** **MODEL NUMBER:2026VB-36-242-SR**

INSTALLERS DIAGRAM

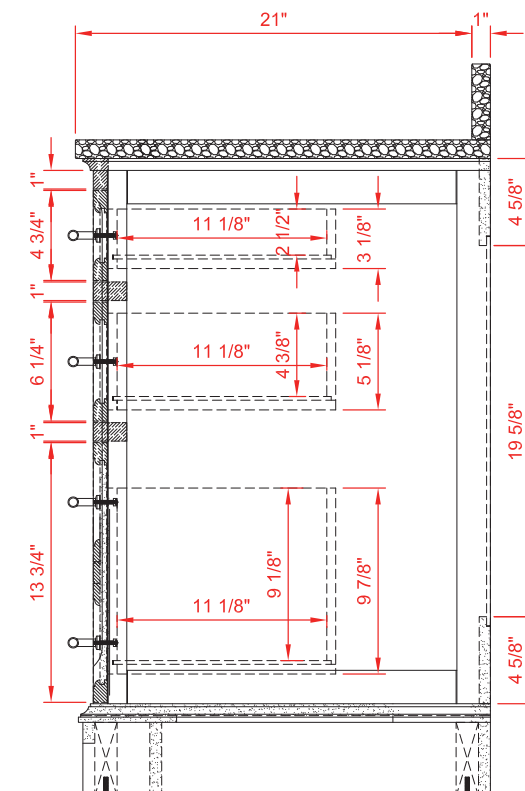
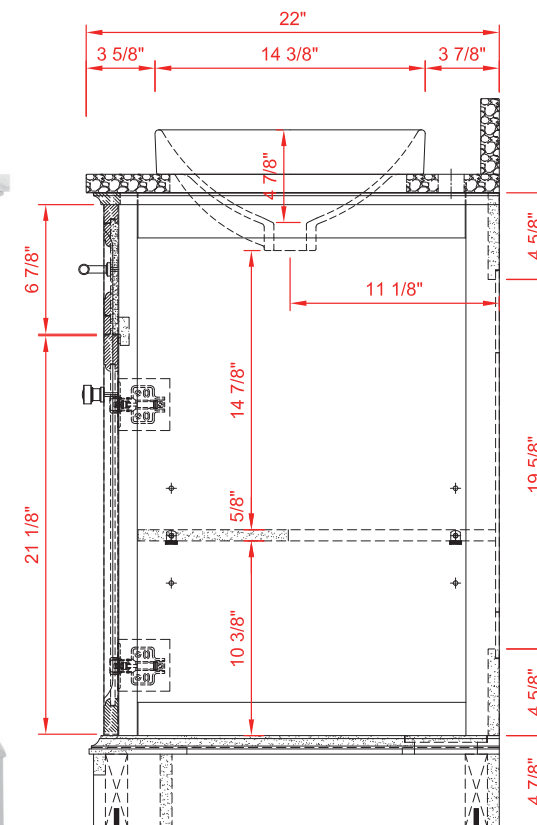
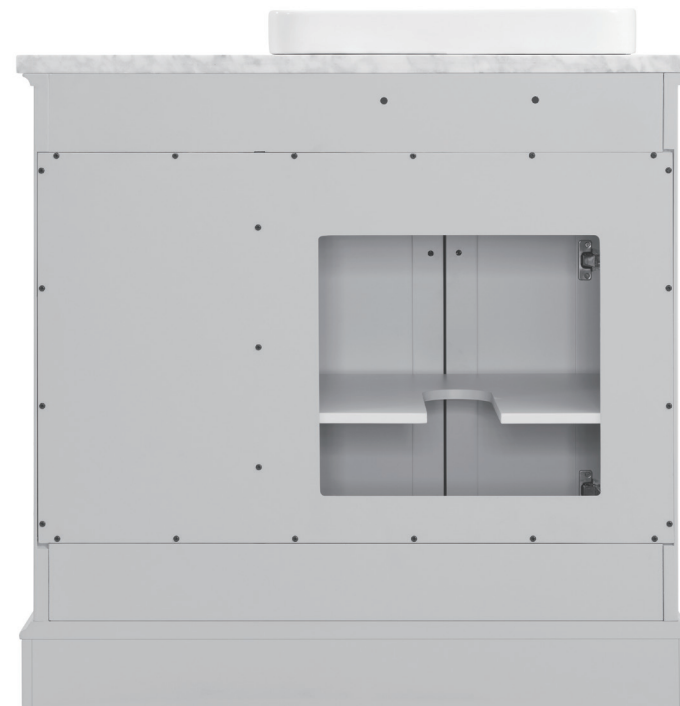
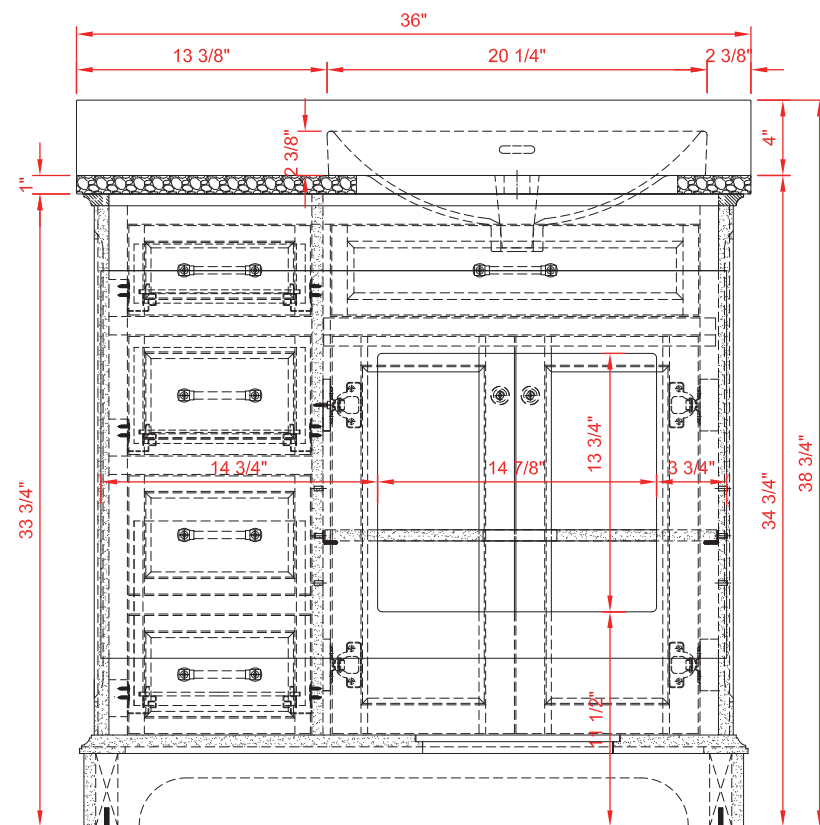
MODEL NUMBER:2026VB-36-242-SR

## SEMI-RECESSED SINK



**Product Net weight (W/O Top):184lbs.**  
**Product packed Gross weight (W/O Top):224lbs.**  
**Packed product Dimensions:**  
**39.25in. W x 25.25in. D x 40 in. H**

## TOP VIEW



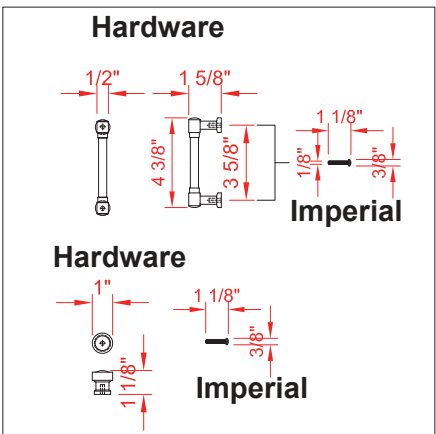
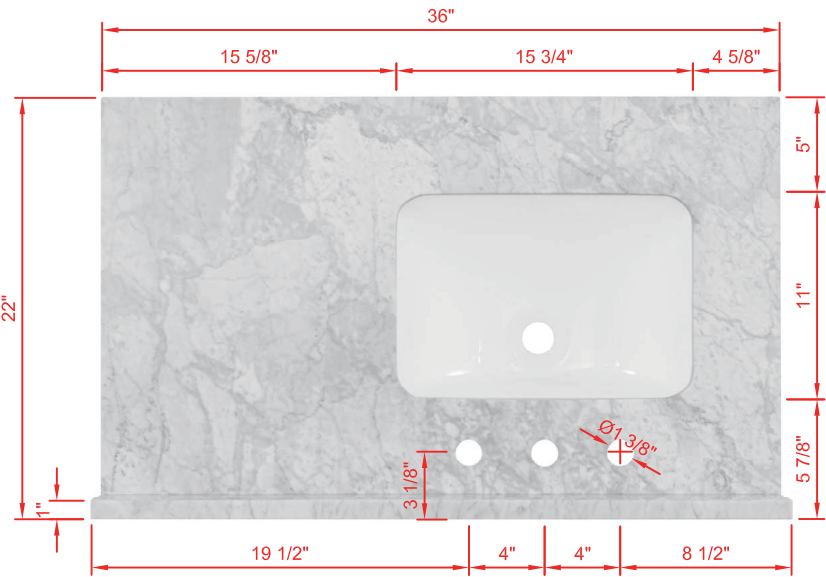
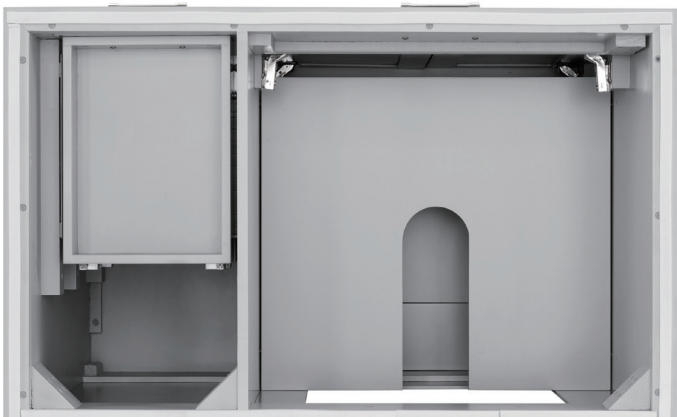
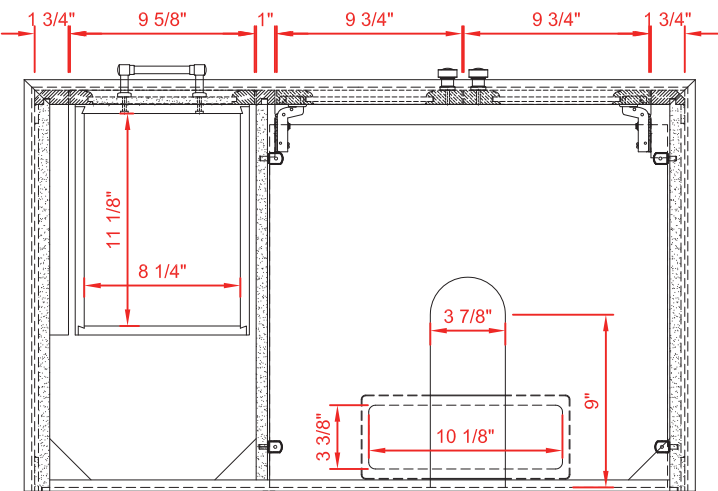
### FRONT VIEW

## SIDE VIEW

# INSTALLERS DIAGRAM

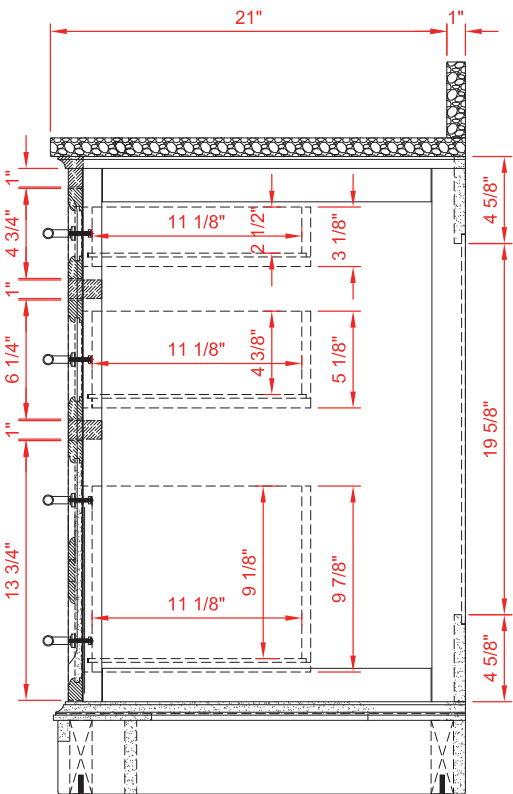
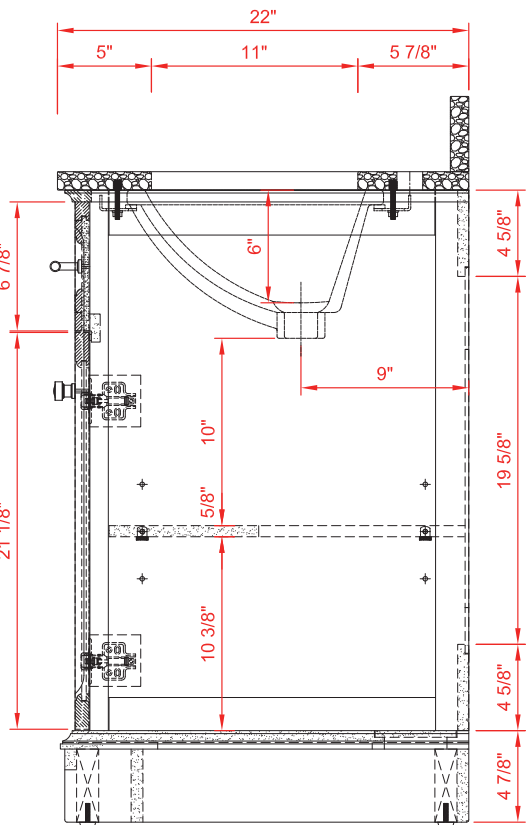
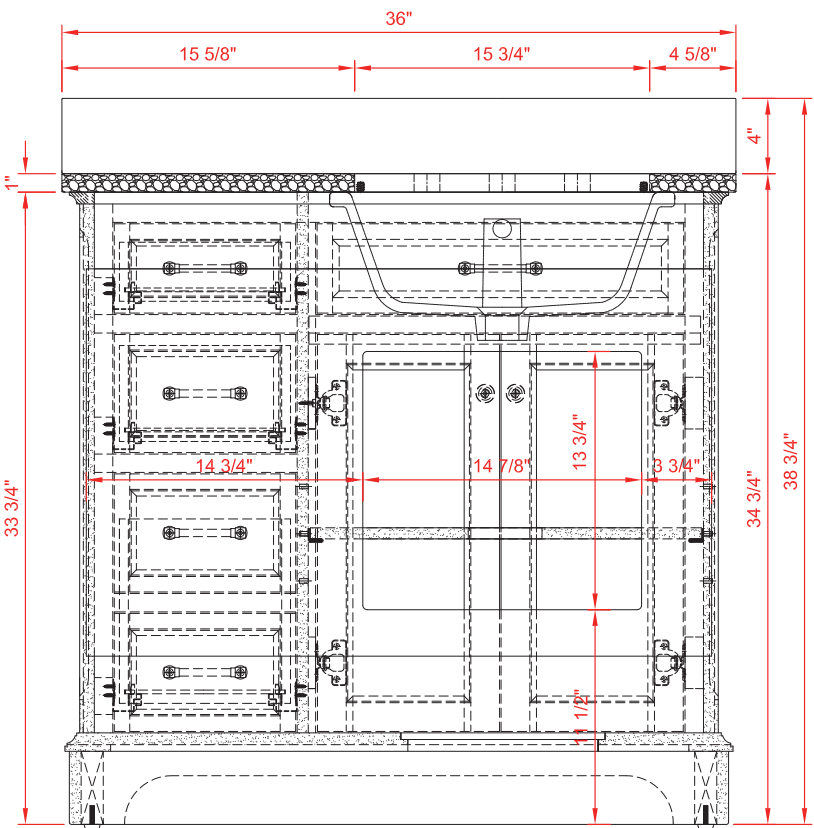
MODEL NUMBER:2026VB-36-242-UM

## UNDERMOUNT SINK



Product Net weight (W/O Top):184lbs.  
Product packed Gross weight (W/O Top):224lbs.  
Packed product Dimensions:  
39.25in. W x 25.25in. D x 40 in. H

TOP VIEW



FRONT VIEW

SIDE VIEW