

## AXOR Starck

Thermostat for concealed installation with shut-off/ diverter valve

Surfaces: **Chrome** Article Number: **10720001**



### Description

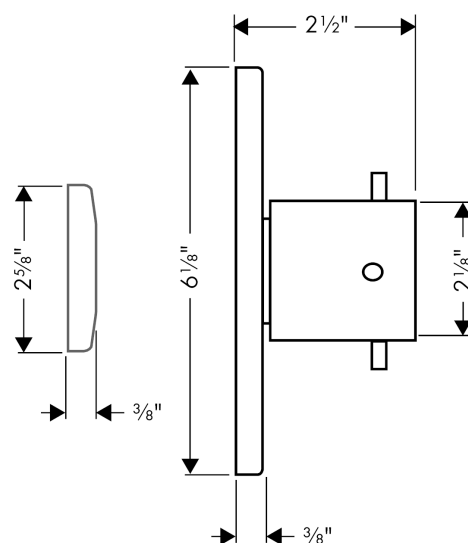
#### product features

- 1 function
- volume control and diverter for 2 outlets
- maximum flow rate at 3 bar: 26.5 l/min
- thermostat cartridge, shut-off/ diverter valve
- safety lock at 40° C
- temperature limitation adjustable
- suitable for continuous flow water heaters
- connection type: basic set
- dirt filter included
- CEC/California/Watersaving
- cUPC/IAPMO/3016/ cUPC mark
- MASS/Massachusetts

### Product image



### Scale drawing

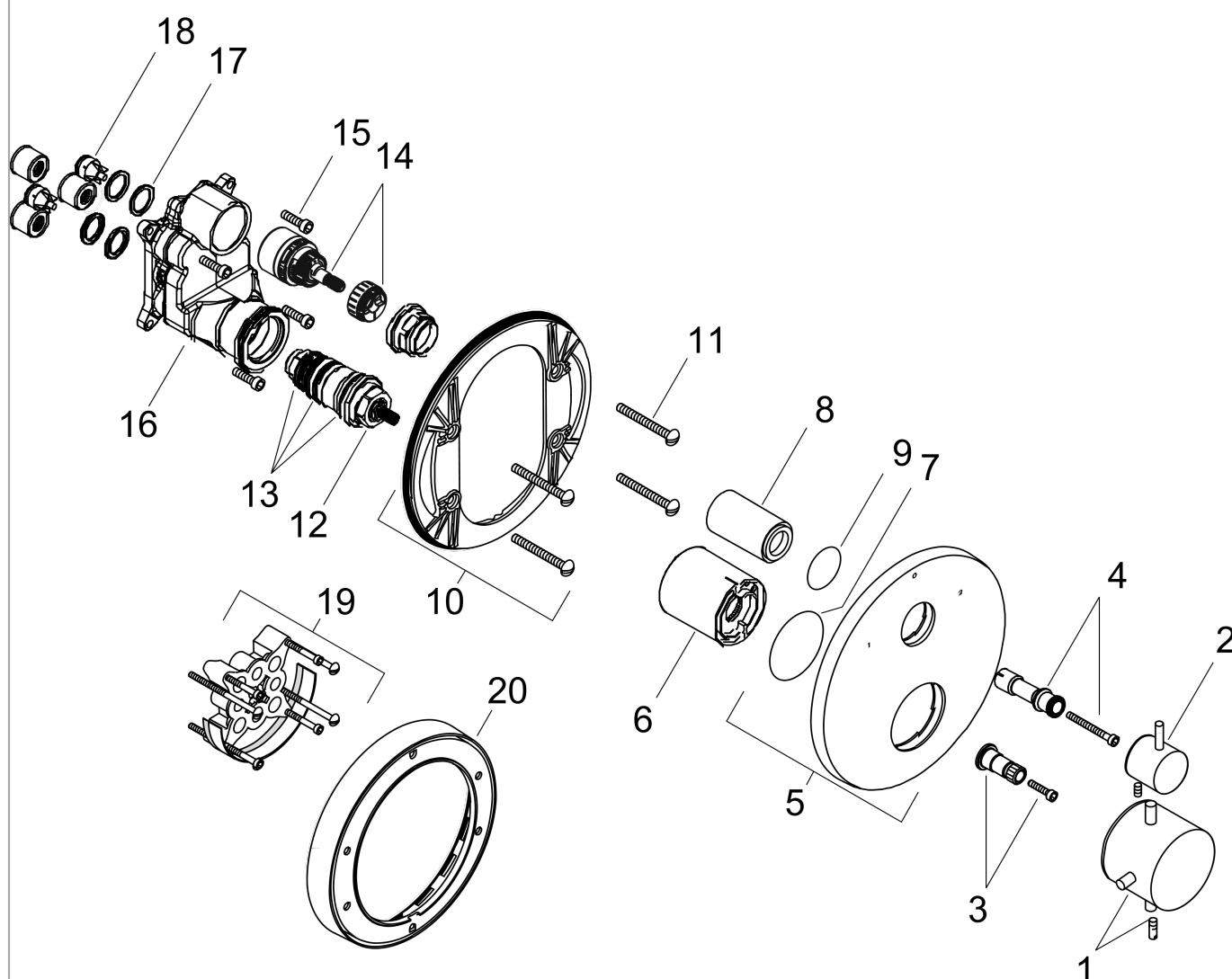


**AXOR Starck**  
**Thermostat for concealed installation with shut-off/ diverter valve**  
 Surfaces: **Chrome**    Article Number: **10720001**



## Exploded Drawing

Year of production: >06/13



**AXOR Starck**  
**Thermostat for concealed installation with shut-off/ diverter valve**  
 Surfaces: **Chrome**    Article Number: **10720001**



## Spare part list

Year of production: >06/13

| Pos. | Description                    | Article Number | PC | PU |
|------|--------------------------------|----------------|----|----|
| 1    | handle for thermostat          | 10391001       | 0  | 1  |
| 2    | handle                         | 96520000       | 0  | 1  |
| 3    | adapter for handle             | 96435000       | 0  | 1  |
| 4    | adapter for handle             | 95256000       | 0  | 1  |
| 5    | escutcheon Ø 170 mm            | 95804000       | 0  | 1  |
| 6    | sleeve                         | 96439000       | 0  | 1  |
| 7    | O-Ring 48x3                    | 95508000       | 0  | 1  |
| 8    | sleeve                         | 95253000       | 0  | 1  |
| 9    | O-ring 29x3                    | 98371000       | 0  | 1  |
| 10   | sub plate                      | 96447000       | 0  | 1  |
| 11   | set of fixing screws           | 96454000       | 0  | 1  |
| 12   | thermostat cartridge           | 94282000       | 0  | 1  |
| 13   | sealing set                    | 95037000       | 0  | 1  |
| 14   | shut off unit with selector    | 98283000       | 0  | 1  |
| 15   | set of screws                  | 96525000       | 0  | 1  |
| 16   | installation unit cpl.         | 92592000       | 0  | 1  |
| 17   | O-ring 16x2                    | 98133000       | 0  | 1  |
| 18   | set of non return valves DW 15 | 97350000       | 0  | 1  |
| 19   | extension 25 mm                | 13595000       | 0  | 1  |
| 20   | extension 22 mm (Ø 170 mm)     | 13596000       | 0  | 1  |