

**Purchased your product online?**

We would really appreciate it if you can share your experience with others by reviewing our product on the website from which you purchased.



Copyright © Alpine Corporation 2023

**Owner's Manual**

Item # USA1368



## Tower Castle Fountain with LED Lights



**Have Questions or Issues? Need help with assembly?  
Contact us and we will resolve them within 12 hours.**

**Support Hours: M-F 7:30–5:00 (U.S. Pacific Time)**



**Call:**

**877-460-4511**



**Text:**

**323-201-4431**



**Email:**

**info@alpine4u.com**

V5.0

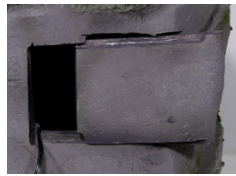


Contents .....	1
What's Included .....	2
Features .....	3
Assembling & Using Your Product .....	4
Replacement Parts .....	8
Troubleshooting .....	9
Caution .....	10
Warranty .....	11
Notes .....	12

## WHAT'S INCLUDED



**Tower Castle Fountain**  
1x  
(4 color-changing LED  
Lights pre-installed)



**Back Cover**  
1x  
(with LED light connectors)



**Pump**  
1x  
(with male two-prong sockets)



**Transformer**  
1x

## LIMITED WARRANTY INFORMATION

Thank you for choosing an Alpine product! We aim to please with our wide range of products including Fountains, Birdbaths, Statuary, Pond Supplies & More. All of our products are constructed from the highest quality materials. In the event that we have not achieved our usual standard of excellence, we will repair or replace, at our discretion, within the warranty period. A valid proof of purchase, with the purchase date clearly indicated, must be provided. Photos of defective merchandise will also be required to help distinguish the actual cause of the defect. Please read below for a detailed description of warranty coverage.

- **Water Damage**

Alpine products are not manufactured to withstand extreme temperatures. Improper storage that allows water to freeze within a product may cause damage, is considered negligence, and will not be covered under this warranty. The use of "hard water," and/or caustic cleaners, can affect the painted or other finishes. Failure to keep the unit clean, and use of such additives/cleaners, will also void the warranty. Please note: for fountains, it is normal for some splashing to occur and protecting the immediate surfaces is not the responsibility of Alpine Corporation.

- **Paint & Color (Retention and/or Loss)**

The use of water will cause natural erosion to the color. This area can be touched up using standard paint. The paint is designed to protect the entire finish against breakdown of color. As with any product, all finishes with time will gradually fade and discolor. The warranty will only cover against severe or complete fading, within the first year from date of purchase, with the above exclusion.

- **Procedure/Service**

Should a warranty/claim be needed, you should contact the retailer from whom you purchased the product. If that is not an option, you can contact Alpine Corporation at [www.alpine4u.com](http://www.alpine4u.com). When contacting Alpine Corporation, you must be prepared to show proof of purchase, provide photographs and any other information needed to validate your claim. This may be necessary to distinguish between a partial or complete replacement of a defective product. The warranty does not cover any items with multiple parts; the warranty will ONLY cover the individual component of the unit/item that may be defective. Replacement parts can be made available to a consumer through the original selling party, or an approved parts retailer. If this is not an option, contact our customer service department. **Item is covered under one year limited warranty from the date of purchase. When requesting replacement parts due to a warranty claim after 30 days of purchase, credit card information will be requested for shipping charges.**

- **Not Covered Under Warranty**

The limited warranty will NOT cover cases of damages due to:

1. Damages caused in Transit
2. Inadequate care and/or neglect
3. Environmental and/or natural elements
4. Immersion in water, unless specified

*This warranty is void if the product has been damaged by accident, misuse, negligence, improper installation and/or modifications have occurred. This includes any and/or all defects arising out of freezing water damage, hard water damage, failure to keep the unit clean and free of harmful additives such as bleach, chlorine, etc.... which affects the paint and/or parts. This warranty also does not cover any additional charges or installation, removal, disposal and/or shipping costs or consequential damage associated with any warranty claim.*

## CAUTION



- Always unplug the pump from the electrical outlet before cleaning & handling.
- Disconnect and store the unit in a dry place if not in use for an extended period of time, or during freezing weather.
- Do not lift, carry or pull the decor by the power cord.
- Do not exceed the maximum voltage & wattage on transformer.

## FEATURES

- Made of sturdy, durable cement and polyresin materials
  - Flowing water adds a soothing sound to any environment
  - Energy-efficient color-changing LED lights in the tower castle create a stunning nighttime display
- 

## SPECIFICATIONS

Power Requirements ..... Standard Household 120V  
Water Capacity ..... 1.8 US Gallons / 8 Liters  
Tubing Diameter ..... 0.5" I.D.

## ASSEMBLING & USING YOUR PRODUCT

Unpack all components carefully. Check to ensure all parts have been removed from the packaging.

1. Place Fountain on smooth and level surface.
2. Remove the Pump from its packaging and adjust the flow control to the lowest setting to avoid splashing until the Fountain is completely assembled.
3. Gently pull the vinyl tubing and LED light cords from inside the Fountain through the back opening.



4. Connect the Tube to the top of the pump.



## TROUBLESHOOTING

If you have any questions and/or problems, please contact the retail store you purchased this fountain from.

- **If your pump fails to run**

- Check the circuit breaker or try a different outlet to make sure the pump is receiving electrical power.
- Check the pump discharge and tubing for any kinks and/or obstructions.
- Any buildup obstructing the water flow can be flushed with a garden hose.
- Check the rotor by removing the front cover & plate to access the impeller area. Turn the rotor and make sure that the rotor is not jammed or broken.

- **If your pump “spews”**

- Check the water level to make sure the pump is completely submerged with enough water in the basin to operate your fountain. Not having enough water will cause your pump to spew.

- **If your pump is making abnormal loud noises**

- Disconnect the pump from the power supply and remove the front cover & plate.
- Carefully grip the impeller and gently pull the impeller/rotor assembly out of the pump housing.
- Rinse the impeller/rotor assembly and clean the cavity with clean water. If breakage or damage is found, contact your local retailer for parts.

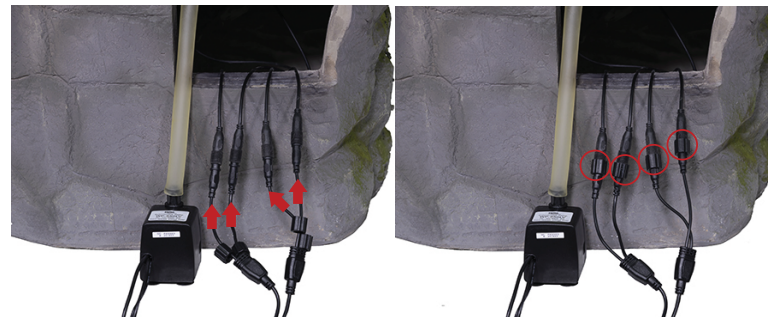
## REPLACEMENT PARTS

For parts or additional help with your new product, please contact Alpine Customer Service.

## ALSO AVAILABLE FROM ALPINE

- Fountain Care Formula.....PPL102  
Foam and scale remover for indoor and outdoor fountains.
- Americana® UV Acrylic Sealer .....RRR106  
Provides protective clear coating for all painted surfaces.
- Touch Up Paint Kit.....RTD102  
Includes primer, thinner, 7 paint colors, applicator and sealer.

5. Connect the LED light cords to the back of the Pump by inserting the male two-prong sockets into the female plugs of the Pump.



6. Slide the connector covers over the connection and twist into place to create a water-tight seal.
7. Place the Pump inside the fountain with the rubber feet facing the bottom of the reservoir.
8. Carefully pour water into the fountain, avoiding overflow and splashing. Ensure the Pump is completely submerged so the water runs clear when operating.

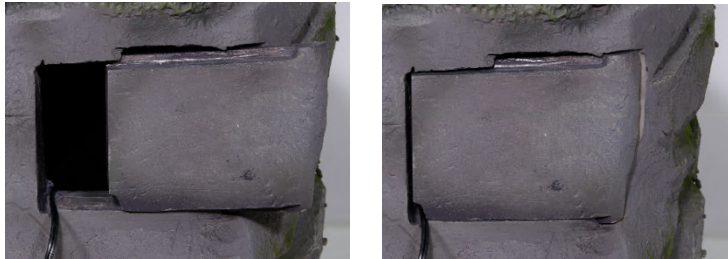


### **Alpine Quick Tip**

We recommend that you use distilled water to prevent scale build-up. The first time you operate the Pump it can take up to 5 minutes for the air to be completely expelled and water begins to flow properly.



9. Push the cords into the groove at the bottom corner of the back opening. Slide the Back Cover into place.



10. Plug the cord for the LED lights and Pump into the Transformer. Slide connector cover over the connection and twist in place to secure. Plug into your local power supply.



**IMPORTANT:** Make sure that there is no water around the plugs and always keep the power source in a dry place.

11. Congratulations, your Fountain is now complete.  
**Relax and enjoy your new holiday décor!**



**Alpine Quick Tip**

The patented castle fountain statue is perfect for your garden, patio, deck, porch, or yard space. It looks great indoors too!

**Color Changing LED lights** illuminate your space, drawing attention to the relaxing water pools for added ambiance day or night.