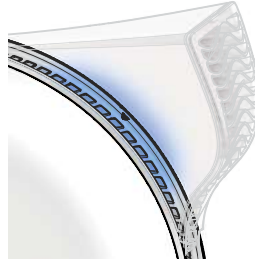
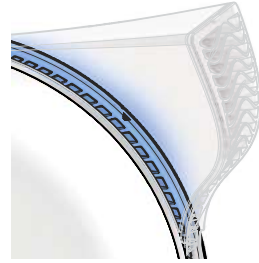


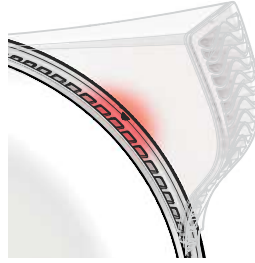
Small blue light and sound = low speed



Medium blue light and sound = medium speed



Full blue light and sound = high speed (Cooling Mode)



A double red flash with sound = change filter

Filter Replacement

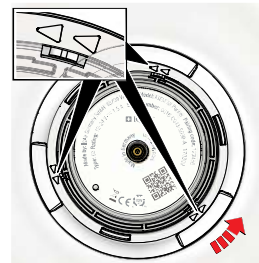
The Atem will indicate a necessary filter change with a double red flash accompanied by a sound.

HyperHEPA filter

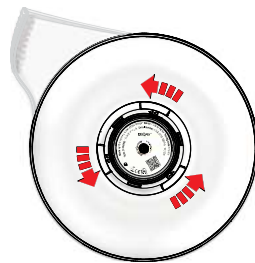
Follow steps 1-4 to change the filter in the Atem.

Disconnect the Atem from the power source before changing the filter!

Step 1: Remove the air purifier from the stand and place it face down on a cloth surface with the back facing up.



Opening direction

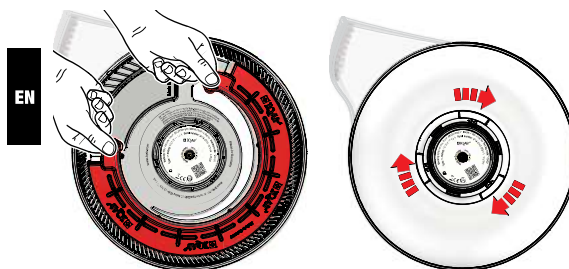


To unlock, turn the locking ring counter clockwise



Lift the back cover away

Step 2: On the back cover, note the direction indicators on the locking ring. Grasp the locking ring firmly and rotate in a counter-clockwise direction until the back cover (3) releases. You should be able to easily lift the back away.



Lift tabs to remove filter

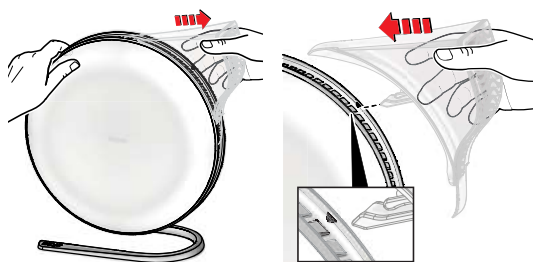
Turn clockwise to lock

Step 3: Remove the old filter by pulling on the tabs and then dispose of it. Replace with a new IQAir Atem HyperHEPA® filter (6) and firmly press into place.

Step 4: Put the back cover on and gently rotate until the lock pins align into place. Grasp firmly and press down on the locking ring and turn clockwise to lock. The back cover should now be closed securely. Attach the air purifier to the stand for use.

PureJet Diffuser

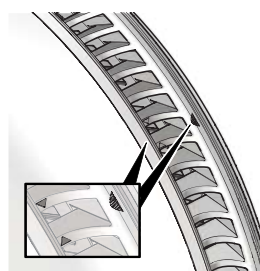
To remove your PureJet diffuser, firmly grasp the air purifier and pull off the diffuser.



Removal of the diffuser

Align the large pins with the arrows

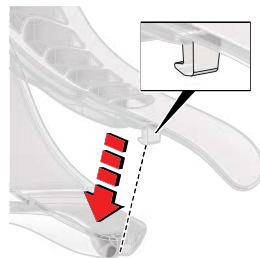
To attach your PureJet diffuser firmly grasp the air purifier and align the large pins on the diffuser with the arrows on the outlet vent. Note the outlet vent has larger openings.



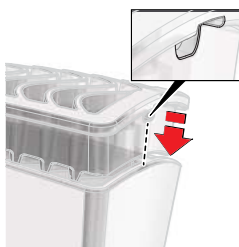
Locate outlet vent arrows

Once the diffuser pins are aligned with the vent arrows press firmly into place while holding the air purifier.

Should the PureJet diffuser grille become dislodged, align the hook at the bottom of the diffuser grille with the bottom of the diffuser body and snap firmly into place.



Connector hook



Diffuser grille snaps into place