

# Ultima Selectronic® Exposed Toilet Flush Valve Piston-Type Battery-Powered, Dual Flush



## GENERAL DESCRIPTION:

Exposed, sensor-operated Selectronic® Toilet Flush Valve for floor-mounted or wall-hung 1-1/2" top spud flushometer bowls, Dual Flush 1.28/1.1 top spud bowls. CR-P2 lithium battery powered.

## PRODUCT FEATURES:

- **Automatic Touchless Operation** limits the spread of germs
- **Factory-Installed CR-P2 Lithium Battery**
- **Patent-pending DynaClean®** wiper spring technology significantly reduces maintenance and downtime.
- **Self-cleaning** wiper spring cleans the refill orifice with every flush; prevents valve run-on from clogging
- **State-of-the-Art Electronics** prevent ghost flushing
- **Proprietary dezincification-resistant** brass alloy
- **Fully Mechanical Manual Override Button** can flush the valve without power
- **Fail-Safe:** Valve automatically closes upon loss of power or water pressure and does not need to be reset
- **Adjustable Sanitary Flush** cleans the fixture & maintains the trap seal.
- **Chemical Resistant EPDM Seals** for extended life
- **High Back Pressure Vacuum Breaker**
- **Adjustable Tailpiece**
- **Range can be adjusted manually or with optional remote control**
- **No external volume adjustment.**
- **Can be installed left or right handed**

## MODEL NUMBER:



- ❑ **6065721.002** Exposed, sensor-operated flush valve for 1-1/2" top spud flushometer bowls, Dual Flush 1.28/1.1 gpf.
- ❑ **6065761.002** Exposed, sensor-operated flush valve for 1-1/2" top spud flushometer bowls, Dual Flush 1.6/1.1 gpf.

Inlet includes 1" sweat solder kit and angle stop with back flow protection and vandal-resistant cap.

Outlet includes 1-1/2" high back pressure vacuum breaker with spud coupling and flange.

## DUAL FLUSH OPERATION

User in detection zone < 60 seconds, 1.1 gallon flush  
User in detection zone ≥ 60 seconds, Standard flush

## OPERATING PRESSURE:

25 psi (flowing) - 80 psi (static)

## FLOW REQUIREMENT:

25 gpm (94.6 L/min.)

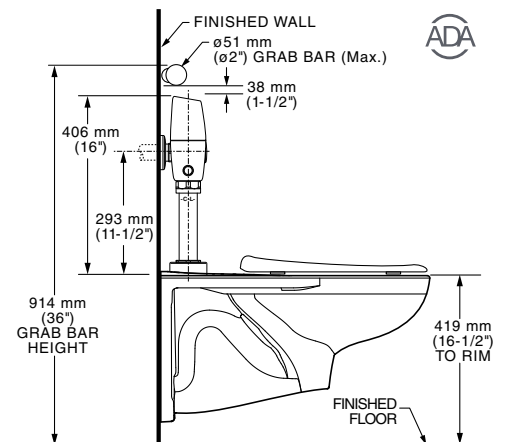
## BATTERY LIFE:

384,000 cycles (8 years @ 4,000 flushes per month)

## OPTIONAL ACCESSORIES:

- Split Ring Pipe Supports: 2-1/2" C-E (6065.822) & 6" C-E (6065.862)

## ADA WATER CLOSET INSTALLATION: AFWALL® TOILET SHOWN



\*\*Flush Valve can be installed to meet ADA 2010 Section 609 when installed as shown

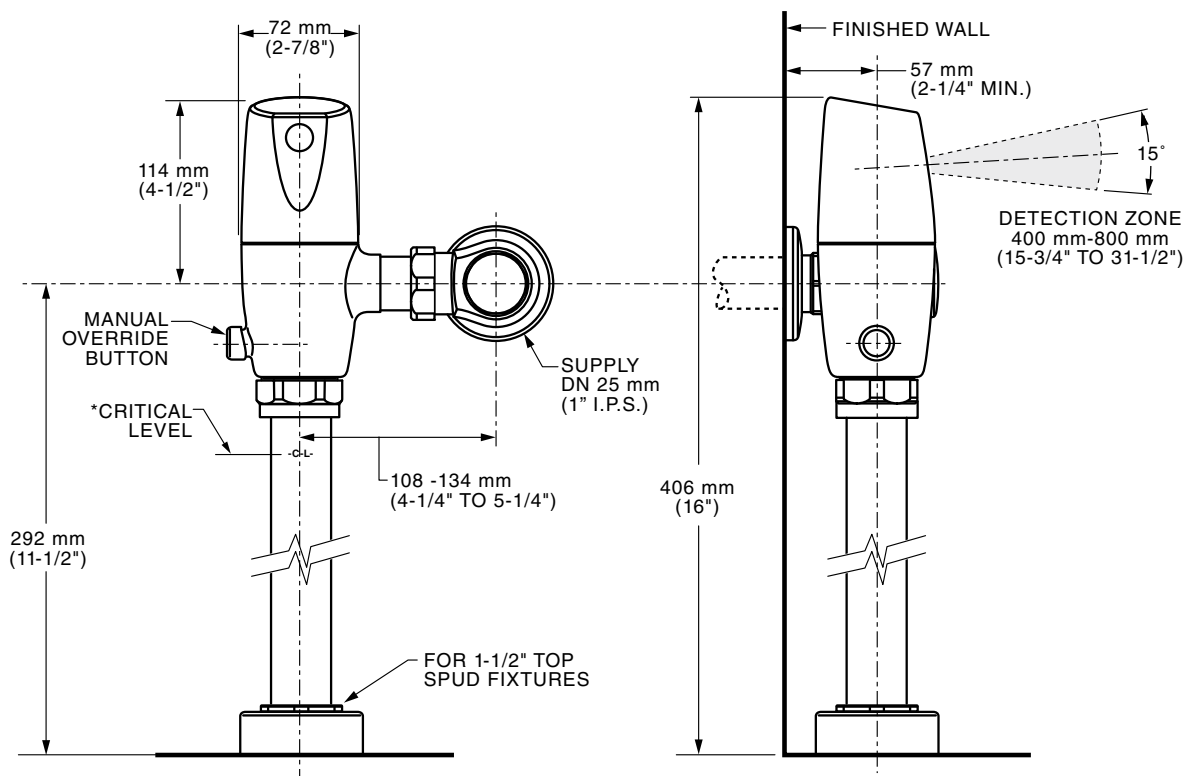
## RECOMMENDED SPECIFICATION:

Electronic, sensor activated toilet flush valve shall feature DynaClean® self-cleaning piston valve with integral wiper spring in refill orifice to prevent clogging. Includes a factory-installed CR-P2 lithium battery and fully mechanical manual override that can flush the valve without power. Includes semi-red brass valve body and metal cover with chrome finish. Includes angle stop with back-flow protection & vandal-resistant cap. Sweat solder kit and high back pressure vacuum breaker also included. Dual Flush 1.28/1.1 gpf / 1.6/1.1 gpf flush valve shall be American Standard Model # 60657\_1.002.

## LISTINGS:

- ASSE 1037
- ANSI/ASME A112.19.2
- ADA Compliant

## Roughing-in Dimensions



\*Note: The Critical Line (-C-L-) on Vacuum Breaker must typically be 6" (152 mm) above fixture. Consult Codes for details.

Right or Left Hand Installation