

Product User Manual

Please read the manual carefully before using this product, and keep it properly for future use!

Thank you for purchasing this product. We have been committed to the R&D and design of lighting products and LED photoelectric products. "Providing customers with satisfactory products and services" is our unswerving enterprise pursuit. For this reason, we continue to innovate and forge ahead!

Safety guidance and precautions

Safety factors are fully considered in the design of this product, but improper installation and use may cause unnecessary losses and injuries. For your safety and better use of this product, please read the operating instructions carefully before use and strictly follow the procedures!

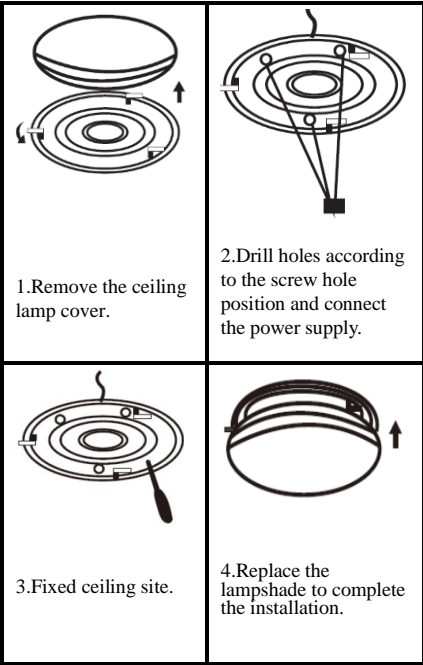
- The applicable power supply of this product is AC85-265V-50Hz;
- Do not install it directly above high temperature objects such as heaters, open flames and gas; Do not install in a steam room or wet environment such as ceiling with wet lime;
- Please cut off the power supply before replacing the light source or removing the lampshade, and do not operate until the lamp is completely cooled. Do not operate with wet hands or hot line job! Do not disassemble or refit lamps at will.
- The high heat generated during the use of the lamp may cause danger. Please do not place flammable items around the lamp, and do not touch the light source and lampshade directly with your hands;
- Stop using lamp immediately when an abnormal situation occurs in the process of using the lamp, cut off the power supply, and ask professional technicians for maintenance.
- Please entrust professional qualified personnel to install lamps and lanterns during installation.

Use

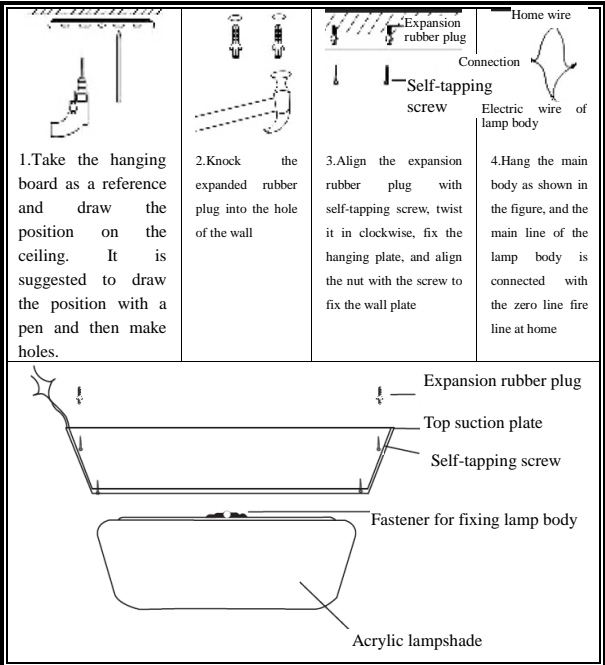
- Do not touch or scratch the surface of lamps with hard objects;
- Do not hang articles or bake clothes on lamps and lanterns.

Product User Manual

- ▲ For your safety, this product needs to be installed by professional technicians!
- Please wear gloves when installing, and remove stains and sweat stains on hardware in time; Lamps and lanterns with grounding symbols must be reliably and permanently grounded when installed;
- Fixed lamps and lanterns must be fixed firmly during installation to ensure that the installed medium can bear the weight of the lamp body. The lamp shall be pulled for 3 times with a pulling force 5 times the weight of the lamp body to ensure that the lamp will not fall after installation;
- Please refer to the following installation instructions for specific installation operation:



Installation method of circular ceiling lamp



Installation method of square ceiling lamp

Cleaning (please clean and inspect lamps once every 6 months)

- ▲ The power supply must be disconnected before cleaning, and the related operations must be carried out after the lamps are completely cooled!
- Wipe it gently with a soft dry cotton cloth instead of a wet cloth or other volatile liquids when cleaning the lamp body ;
- Please use a clean feather duster to gently brush the surface of the lampshade when cleaning the PVC lampshade, so as not to stain the lampshade or cause deformation.

Warranty regulations

We provide 2-year free warranty for the lamps sold. Customers with problems please contact our after-sales customer service, and we will choose the corresponding method according to the actual situation.

The warranty does not include light sources. You cannot enjoy free warranty in the following cases:

- Improper installation or abnormal use and unauthorized modification cause damage to the lamp body;
- Damage to lamps caused by external forces such as falls, impacts, earthquakes, floods, public hazards, humidity, chemical corrosion, or natural disasters;
- The lamps are damaged due to overcurrent and overvoltage caused by abnormal power supply in the buyer's building;
- Other damages not caused by the product itself.

Warranty Card

Product name:

Date of manufacture: MM-DDD-YYY

Warranty with this card

Implementation criteria:

The following shall be completed by the dealer:

Sales date: MM-DDD-YYYY Tel.:

Distribution unit:

Address:

Date	Maintenance record	Handler

Product User Manual

All rights reserved. No reprint allowed