

尺寸: 125\*176mm(折叠)  
250\*176mm(展开)  
材质: 120g铜版纸、骑马钉

# DIRECTORY

IMPORTANT SAFEGUARDS .....	01-03
ATTENTION .....	04-05
PRODUCT APPEARANCE DIAGRAM .....	06-07
USE AND OPERATION .....	08-10
INSTRUCTIONS FOR USE .....	11-14
CLEANING AND CARE/FAQ .....	15
PARAMETERS OF THE UNIT .....	16

## IMPORTANT SAFEGUARDS

In order to prevent harm or damage happened to users or others, be sure to comply with the requirement as below:

### WARNING/ATTENTION



#### WARNING

It reminds that misusing or mishandling may cause death.



#### ATTENTION

It reminds that misusing or mishandling may cause hurt.



**FORBID**

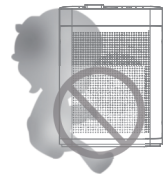


**FORCE**

Unplug or disconnect the appliance from the power supply before servicing.  
WARNING: To Reduce The Risk Of Fire Or Electric Shock, Do Not Use This Fan With Any Solid-State Speed Control Device.  
WARNING: To Reduce The Risk Of Fire, Electric Shock Or Injury To Persons, Do Not Use Replacement Parts That Have Not Been Recommended By The Manufacturer (e.g. Parts Made At Home Using A 3D Printer)

### IMPORTANT SAFEGUARDS

#### **WARNING**



Please supervise your children and avoid them from touching or using machine.



**AVOID WET**

Do not connect or disconnect the power with wet hand. It may cause electrical shocking.



**NO DISASSEMBLE**

Do not disassemble, repair or reconstruct. It may cause fire or damage. Please contact the seller for replacement.



**FORBID**

Do not use over-limit sockets or wiring connectors. Please use the rated voltage. It may cause a fire.



Do plug the power into the socket completely. It may cause fire because of heating or electrical shocking. Do not use the damaged plug or loose socket.

**TER**Air

[www.terhomelife.com](http://www.terhomelife.com)

[email:terhomelife@outlook.com](mailto:terhomelife@outlook.com)

Facebook: TER homelife

2

### IMPORTANT SAFEGUARDS



**AVOID WET**

Avoid any water on the surface of the unit. It may cause short circuit or electrical shocking.



**DISCONNECT POWER**

The appliance must be disconnected from the supply mains before cleaning or other maintenance. Otherwise the unit may start working in a sudden which may cause electrical shocking or hurt.



Do not insert any metal objects into the unit. It may cause hurt or electric shocking.



**FORBID**

Do not repair it when the cord or plug is damaged. It may cause short circuit, electric shocking or fire. Please contact the retailer for replacement.



If there is dust on the plug, it may weaken the insulation and even cause a fire. Take out the plug and clean it with dry cloth. Please remove the plug from the socket if not using for a long period.

**TER**Air

[www.terhomelife.com](http://www.terhomelife.com)

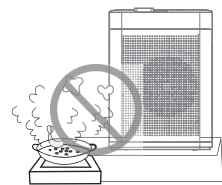
[email:terhomelife@outlook.com](mailto:terhomelife@outlook.com)

Facebook: TER homelife

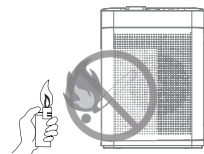
3

**ATTENTION**

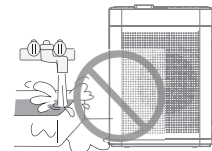
**ATTENTION**



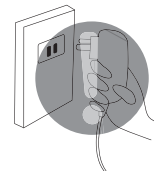
**Do not use in the room with a gas stove.**  
It may cause hurt because the machine is not a ventilator.



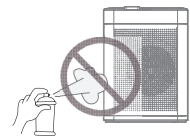
**Do not place the unit near fires.**  
It may cause fire.



**Do not use in the watery or high temperature room such as the bathroom etc.**  
Otherwise it may cause creepage, electric shocking or fire.



**Please hold the plug instead of the cord when unplug the power.**  
Otherwise it may cause short circuit, breaking of the cord, electric shocking or fire.



**Keep away from alcohol, organic impregnant.**  
It may cause cracking, short circuit, electric shock, injury or fire.

**TER**Air

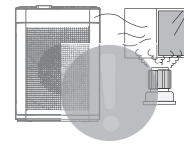
[www.terhomelife.com](http://www.terhomelife.com)

[email:terhomelife@outlook.com](mailto:terhomelife@outlook.com)

Facebook: TER homelife

4

**ATTENTION**



**Please ventilate timely when used with fire in the room.**

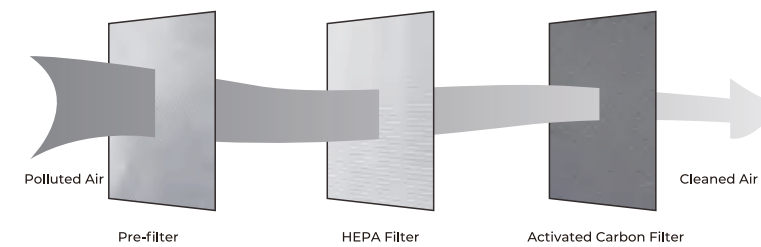
**Please remove the plug from the socket if any conditions as below:**

- If all switches do not work
- If the power cord or plug hot singularly
- If any peculiar smell, exceptional noise or vibration
- Any other abnormality or failure

If the power cord is damaged, please send it to the retailer or service center or technician for repairing. Do not change or repair it by yourself.

The multi-functional filter is composed of pre-filter, HEPA layer and activated carbon layer.

**DIAGRAM OF PURIFICATION**



**TER**Air

[www.terhomelife.com](http://www.terhomelife.com)

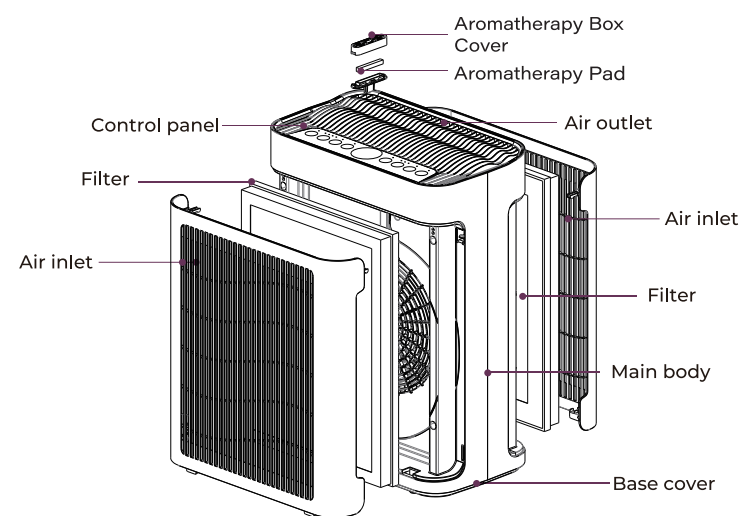
[email:terhomelife@outlook.com](mailto:terhomelife@outlook.com)

Facebook: TER homelife

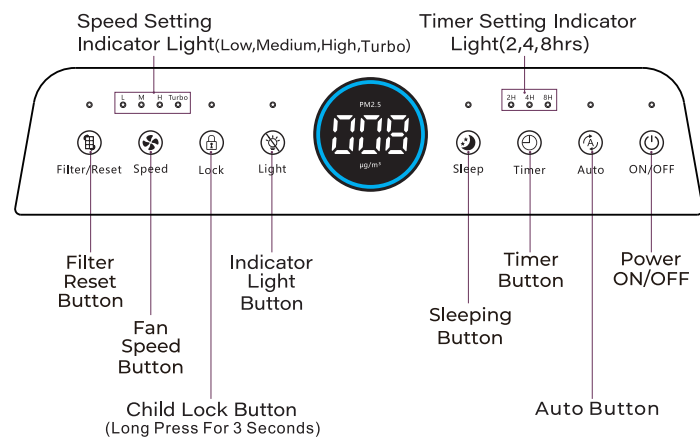
5

**PRODUCT APPEARANCE DIAGRAM**

**DECOMPOSITION DIAGRAM**



**DIAGRAM OF CONTROL PANEL**



**TER**Air

www.terhomelife.com

email:terhomelife@outlook.com

Facebook: TER homelife

6

**PRODUCT APPEARANCE DIAGRAM**

**PLACEMENT**

- ◆ Make sure the appliance is placed at least 30cm away from any wall or piece of furniture. Do not position the appliance directly under furniture or objects that may obstruct the exhaust air flow.
- ◆ Do not use the appliance near any source of heat.

**REPLACE THE FILTER**

- ◆ Replace the filter and reset.

The filter replacement indicator will light up when cumulative running time reaches 2160hrs. Please replace the filter with a new one. Then, press and hold the reset button for approximately 3 seconds to reset the filter's lifetime counter, and the filter replacement indicator will turn off.

**REMOVE THE FILTER**

1. Switch the appliance off and unplug it.
2. Remove the inlet grille.
3. Grab the top rope of the filter and pull it out.
4. Take out the filter and close the inlet grille.

**TER**Air

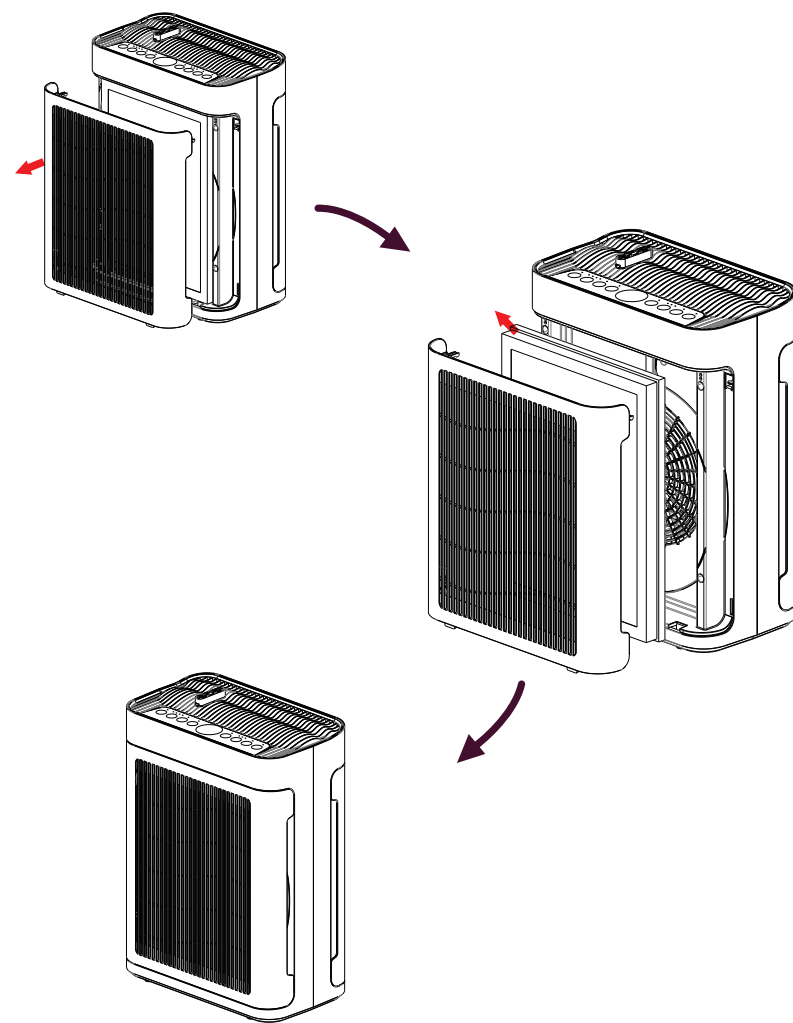
www.terhomelife.com

email:terhomelife@outlook.com

Facebook: TER homelife

7

USE AND OPERATION



TERAir

www.terhomelife.com

email:terhomelife@outlook.com

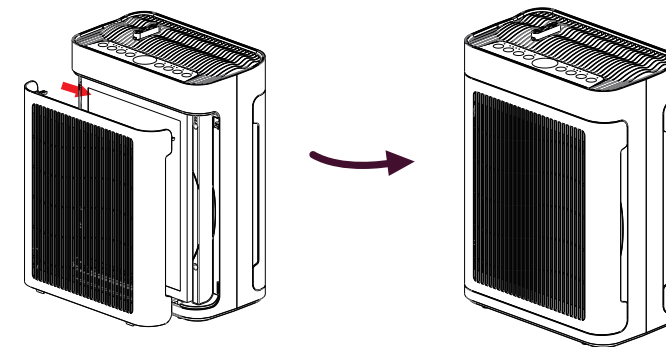
Facebook: TER homelife

8

USE AND OPERATION

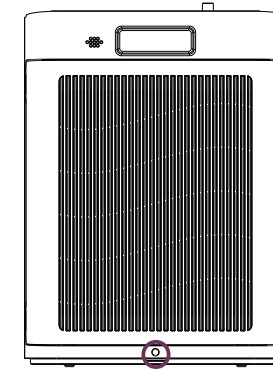
**INSTALL THE FILTER**

1. Please remove the new filter protective film before installation.
2. Please fasten the inlet grille correctly until the filter is firmly installed.



**EXTERNAL POWER SOURCE**

Suitable Voltage: 24V 



24V DC power adapter inlet



Power adapter

TERAir

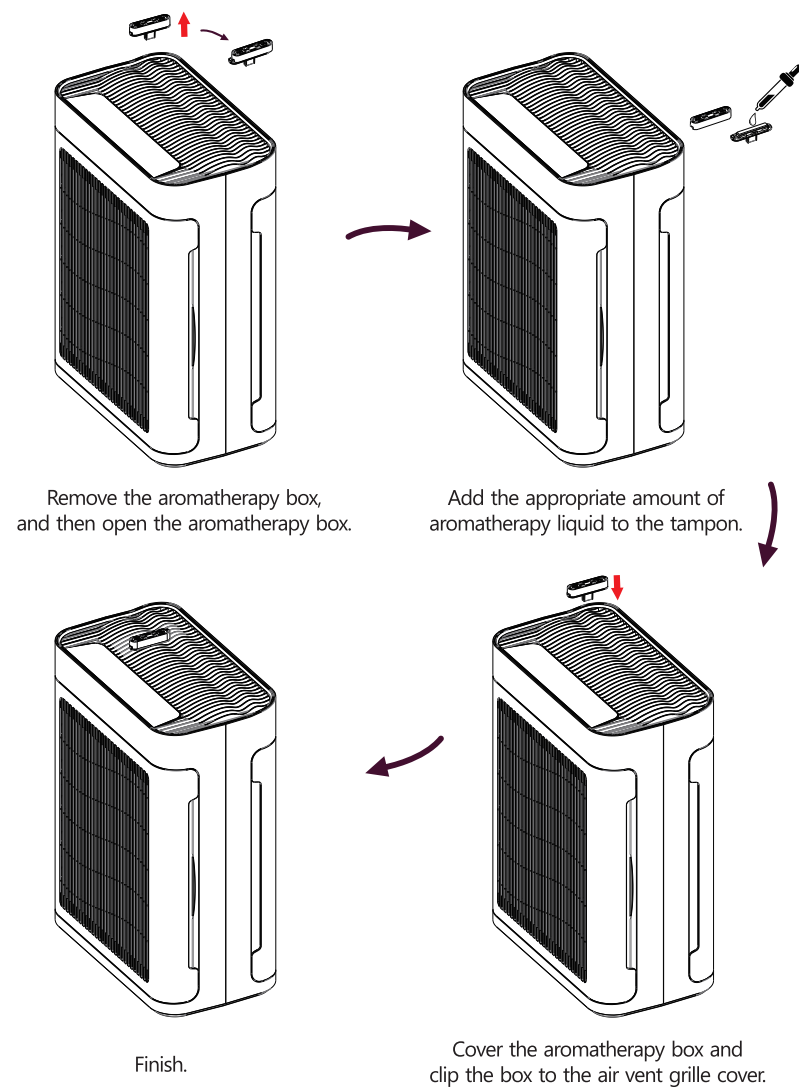
www.terhomelife.com

email:terhomelife@outlook.com

Facebook: TER homelife

9

## USE AND OPERATION



**TER**Air

www.terhomelife.com

email:terhomelife@outlook.com

Facebook: TER homelife

10

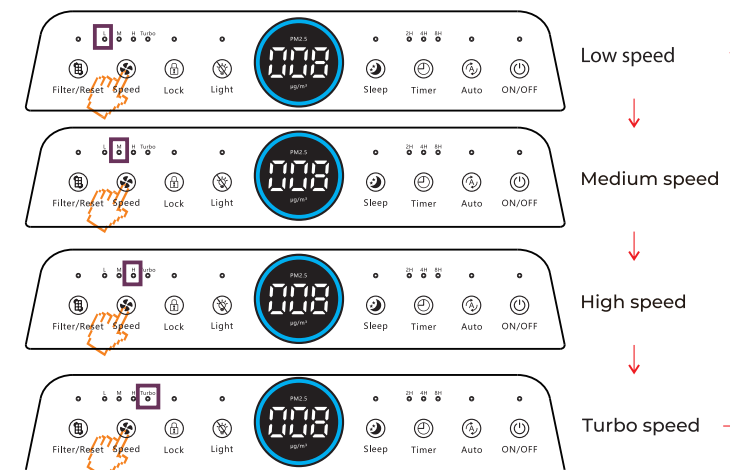
## INSTRUCTIONS FOR USE

### POWER SETTING

- ◆ All the indicator lights will be on for 3 second for self-checking after connecting power, then enter standby mode. The pictures below are for reference.
- ◆ To turn on or switch off the appliance, press the power button while in standby mode.

### FAN SPEED SETTING

Press the fan speed button to select the fan speed: low, medium, high, Turbo.



**TER**Air

www.terhomelife.com

email:terhomelife@outlook.com

Facebook: TER homelife

11

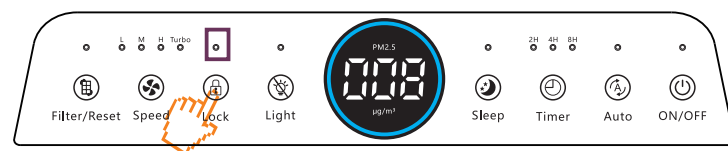
## INSTRUCTIONS FOR USE

### TIMER SETTING

- ◆ Press the timer button to set the working time.



- ◆ Use the control lock to temporarily lock the control panel and deactivate the function buttons. To turn on or deactivate the child lock, press and hold the child button on the top control panel for approx. 3 seconds. Child lock indicator light on the display will light up or be switched off accordingly.



**TER**Air

www.terhomelife.com

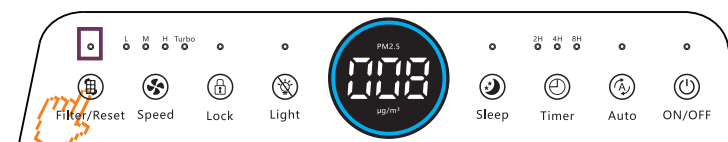
email:terhomelife@outlook.com

Facebook: TER homelife

12

## INSTRUCTIONS FOR USE

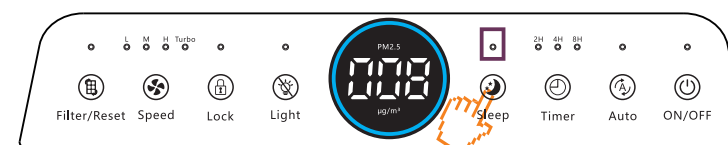
- ◆ The filter replacement indicator will light up when the cumulative running time reaches 2160 hours. Please replace the filter with a new one. Then, press and hold the reset button for approximately 3 seconds to reset the filter's lifetime counter, and the filter replacement indicator will turn off.



Filter replacement indicator light on

### SLEEPING MODE

- ◆ To turn on or deactivate sleep mode by pressing sleep button. Sleep mode sets the appliance to the lowest speed setting with fan speed indicator light switched off and Sleep mode indicator half lit.



Turn on sleep mode

**TER**Air

www.terhomelife.com

email:terhomelife@outlook.com

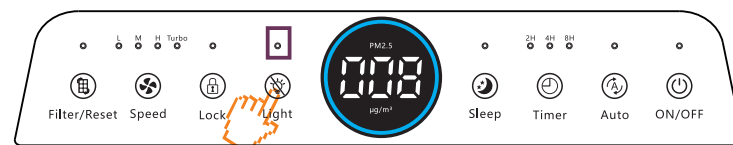
Facebook: TER homelife

13

## INSTRUCTIONS FOR USE

### USE AMBIENT LIGHT FUNCTION

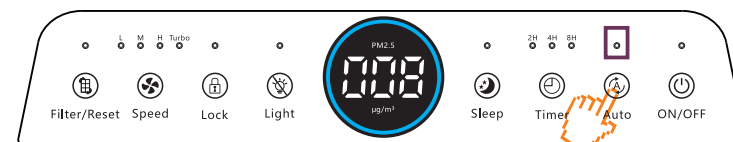
- ◆ Press Indicator light button to turn on or switch off the Indicator light



Switch off /Turn on Indicator light

### AUTO MODE

- ◆ Touch this button to enter the automatic mode, the corresponding indicator light will be high lighted in white, and the machine will automatically regulate the gear wind speed according to the real-time air quality index.



Turn on Auto mode

Note: Auto's specific working gears should be made to correspond to the change of PM2.5 values.

Three colors, corresponding to three gears.

Air Quality Indicator Bad	AQI
Blue	0~35
Green	36~75
Red	76~999

**TER**Air

www.terhomelife.com

email:terhomelife@outlook.com

Facebook: TER homelife

14

## CLEANING AND CARE/FAQ

### MAINTENANCE AND CLEANING METHODS

Please remove plug from the socket before cleaning and maintenance.

- ◆ Cleaning the body for this device by damp cloth, then wipe it dry.
- ◆ If the machine is too dirty, neutral detergent can be used for cleaning, but please dilute the detergent before use.
- ◆ Do not clean the unit with the solvent listed on the right which may cause distortion or discolour.



If the machine can't work properly, please kindly check as below before you send it out for repair

Problem	Checking methods	Possible solution
Do not work	• Please check if the plug is disconnected from the socket.	→ Power plug should be plugged properly
Odor can not be removed	• Is there a very strong odor in the using environment? (Notes: air should be purified continuously)	→ It is recommended to ventilate first and then turn on the machine
	• Does the using life time for filters come to the end?	→ Please replace the used filter with a new one.
High noise	• Is the PE bag for filter removed?	→ Please take out filter and tear off PE bag.
	• Does the using life time for filter come to the end?	→ Please replace the used filter with a new one.

If the problem is still existed after above inspections, please disconnect the power and it for repair

**TER**Air

www.terhomelife.com

email:terhomelife@outlook.com

Facebook: TER homelife

15

## PARAMETERS OF THE UNIT

### PARAMETERS OF THE UNIT

Model No.:	MK-AP01
Voltage Supply:	AC100V-240V/50-60Hz
Power consumption(w):	42.5W
Net Weight:	3.2Kg±0.5kg
Dimensions(wxdxh):	300×170×406 (mm)

### FILTER PARAMETERS

Item name	Dimensions(wxdxh)	Life time
High efficiency composit filter	314×233×27mm	2160H