



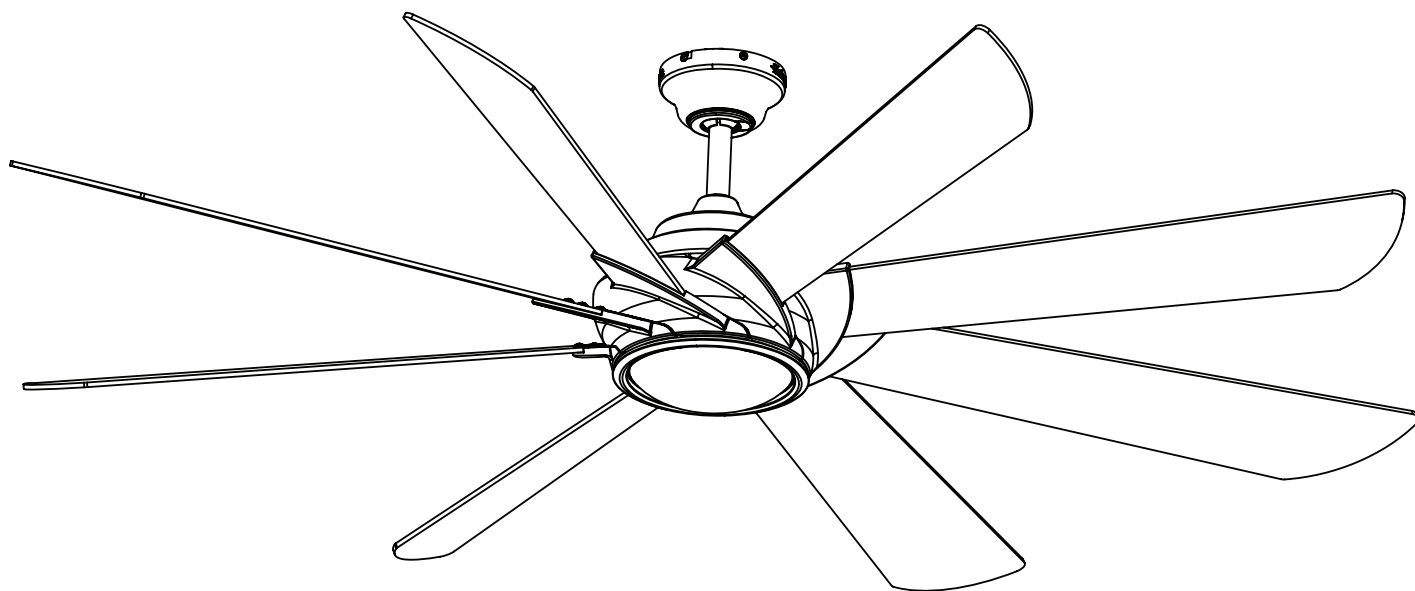
HARBOR BREEZE and logo design are trademarks or registered trademarks of LF, LLC. All rights reserved.

ITEM #883783  
MODEL #43325

# HYDRA CEILING FAN

**Español p. 20**

**ATTACH YOUR RECEIPT HERE**



Purchase Date \_\_\_\_\_

Thank you for purchasing this HARBOR BREEZE product.  
Questions, problems, or missing parts?  
Before returning, contact us at:  
**888-251-1003**, 8 a.m. - 8 p.m., EST, Monday - Sunday or at **ascs@lowes.com**.

**TABLE OF CONTENTS**

---

Package Contents . . . . . 3

Hardware Contents . . . . . 4

Safety Information . . . . . 5

Preparation . . . . . 6

Initial Installation . . . . . 7

Standard or Angle Mounting Instructions. . . . . 9

Wiring . . . . . 11

Final Installation. . . . . 12

Operating Instructions . . . . . 15

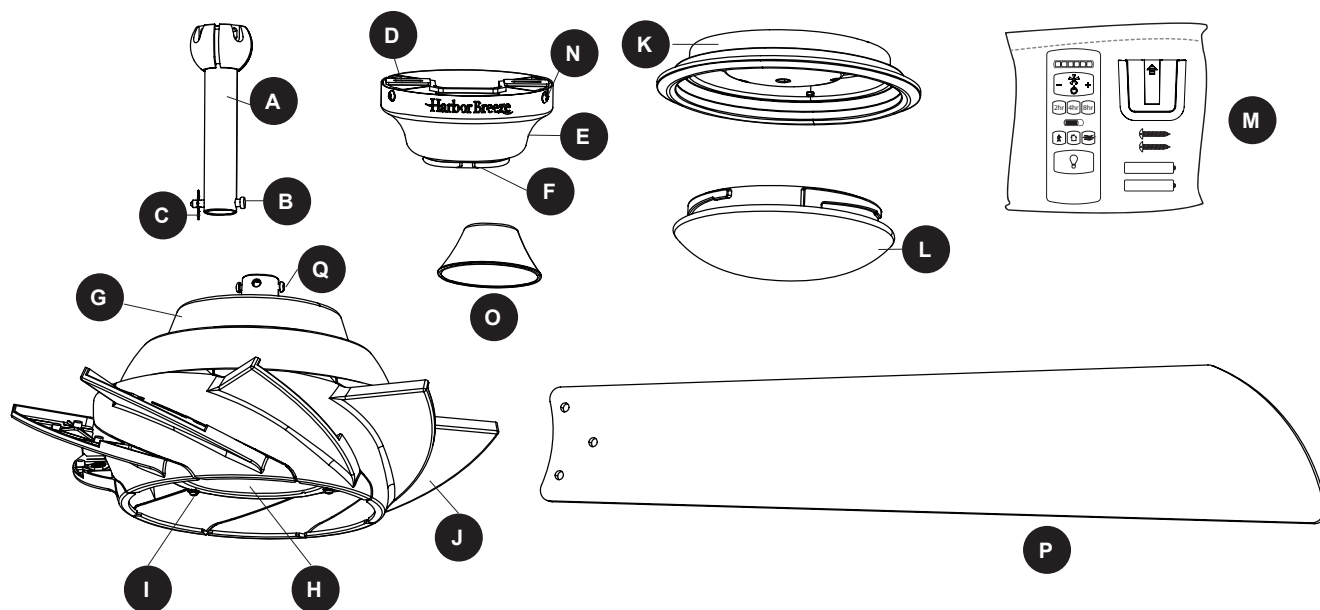
Care and Maintenance . . . . . 16

Troubleshooting. . . . . 16

Limited Lifetime Warranty . . . . . 18

Replacement Parts List . . . . . 19

## PACKAGE CONTENTS



PART	DESCRIPTION	QUANTITY
A	Downrod	1
B	Downrod Pin (preassembled to Downrod [A])	1
C	Downrod Clip (preassembled to Downrod [A])	1
D	Mounting Bracket (preassembled to Canopy [E])	1
E	Canopy	1
F	Canopy Cover (preassembled to Canopy [E])	1
G	Motor Assembly	1
H	Fitter Plate (preassembled to Motor Assembly [G])	1
I	Fitter Plate Screw (preassembled to the Fitter Plate [H])	3
J	Blade Arm (preassembled to Motor Assembly [G])	8
K	Light Kit	1
L	Glass Bowl	1
M	Remote Pack	1
N	Mounting Bracket Screw (preassembled to Mounting Bracket [D])	4
O	Yoke Cover	1
P	Blade	8
Q	Set Screw (preassembled to Motor Assembly [G])	2

## HARDWARE CONTENTS (shown actual size)

---

AA



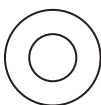
Wire Connector  
Qty. 3  
+ 1 extra

BB



Blade Screw  
Qty. 24  
+ 1 extra

CC



Blade Washer  
Qty. 24  
+ 1 extra



## SAFETY INFORMATION

---

Please read and understand this entire manual before attempting to assemble, operate or install the product.

- Before you begin installing the fan, disconnect the power by removing fuses or turning off the circuit breakers.
- Make sure all electrical connections comply with local codes, ordinances, the National Electrical Code and ANSI/NFPA 70-199. Hire a qualified electrician or consult a do-it-yourself wiring handbook if you are unfamiliar with installing electrical wiring.
- Make sure the installation site you choose allows a minimum clearance of 7 ft. from the blades to the floor and at least 30 in. from the end of the blades to any obstruction.
- The net weight of this fan is: 26.92 lbs.



**DANGER:** When using an existing outlet box, make sure the outlet box is securely attached to the building structure and can support the full weight of the fan. Failure to do this can result in serious injury or death. The stability of the outlet box is essential in minimizing wobble and noise in the fan after installation is complete.



**WARNING:** To avoid personal injury, the use of gloves may be necessary while handling fan parts with sharp edges.



**WARNING:** Using a full-range dimmer switch to control fan speed will cause a loud humming noise from the fan. To reduce the risk of fire or electric shock, do NOT use a full-range dimmer switch to control the fan speed.



**WARNING:** To reduce the risk of fire or electric shock, do NOT use this fan with any solid-state speed control device.



**WARNING:** To reduce the risk of fire, electric shock or personal injury, mount the fan to an outlet box marked “ACCEPTABLE FOR FAN SUPPORT” and use the mounting screws provided with the outlet box. Most outlet boxes commonly used for the support of lighting fixtures are not acceptable for fan support and may need to be replaced. Consult a qualified electrician if in doubt. Secure the outlet box directly to the building structure. The outlet box and its support must be able to support the moving weight of the fan (at least 35 lbs.).



**WARNING:** To reduce the risk of fire, electric shock or personal injury, wire connectors provided with this fan are designed to accept only one 12-gauge house wire and two lead wires from the fan. If your house wire is larger than 12-gauge and/or there is more than one house wire to connect to the two fan lead wires, consult an electrician for the proper size wire connectors to use.



**WARNING:** To reduce the risk of fire, electric shock or personal injury, do not bend the blade arms when installing them, balancing the blades or cleaning the fan. Do not insert objects between the rotating fan blades.



**WARNING:** To reduce the risk of personal injury, use only parts provided with this fan. The use of parts OTHER than those provided with this fan will void the warranty.



## SAFETY INFORMATION

---

Read all instructions and safety information before installing your new fan. Review the accompanying assembly diagrams.

**CAUTION:** Be sure the outlet box is properly grounded or that a ground (green or bare) wire is present.

**CAUTION:** Carefully check all screws, bolts and nuts on the fan motor assembly to ensure they are secured.

**CAUTION:** This device complies with Part 15 of the FCC Rules. Operation is subject to the following two conditions: (1) this device may not cause interference, and (2) this device must accept any interference, including interference that may cause undesired operation of the device.

**CAUTION:** This equipment has been tested and found to comply with the limits for a Class B digital device, pursuant to Part 15 of the FCC Rules. These limits are designed to provide reasonable protection against harmful interference in a residential installation. This equipment generates, uses and can radiate radio frequency energy and, if not installed and used in accordance with the instructions, may cause harmful interference to radio communications.

However, there is no guarantee that interference will not occur in a particular installation. If this equipment does cause harmful interference to radio or television reception, which can be determined by turning the equipment off and on, the user is encouraged to try to correct the interference by one or more of the following measures:

--Reorient or relocate the receiving antenna. Increase the separation between the equipment and receiver.

--Connect the equipment into an outlet on a circuit different from that to which the receiver is connected.

--Consult the dealer or an experienced radio/TV technician for help. Any changes or modifications not expressly approved by the grantee of this device could void the user's authority to operate the equipment.

HKC-US  
3350 Players Club Parkway #225  
Memphis, TN 38125  
(888) 251-1093

## PREPARATION

---

Before beginning the assembly of this product, ensure that all parts are present. Compare all parts with the package contents list and hardware contents list. If any part is missing or damaged, do not attempt to assemble the product.

**Estimated Assembly Time:** 120 minutes

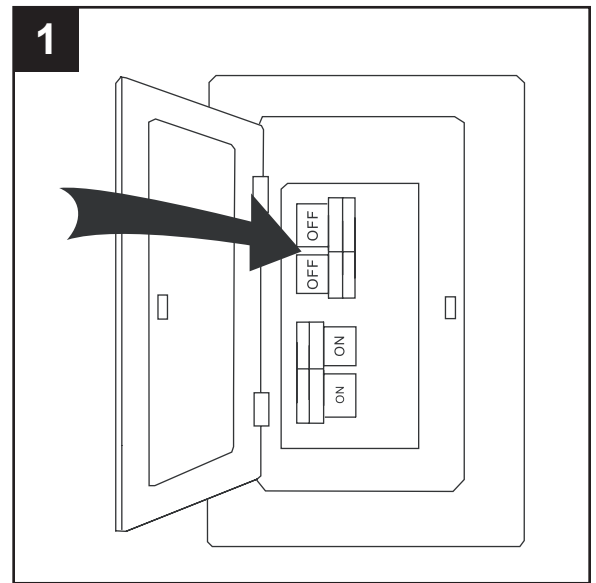
Tools Required for Assembly (not included): Electrical Tape, Phillips Screwdriver, Pliers, Safety Glasses, Step Ladder, Wire Cutters and Wire Strippers

Helpful Tools (not included): AC Tester Light, Tape Measure and Wiring Handbook

## INITIAL INSTALLATION

1. Turn off the circuit breakers and the wall switch to the fan supply line leads.

**⚠ DANGER:** Failure to disconnect the power supply prior to installation may result in serious injury or death.



2. Determine the mounting method to use.

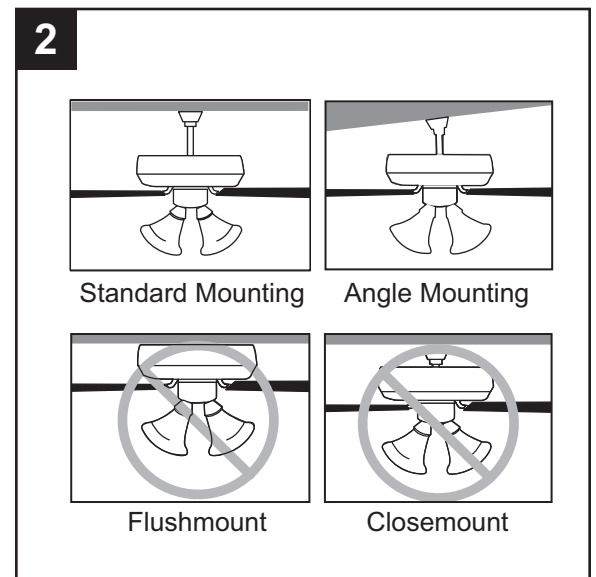
**Standard mounting** is best suited for ceilings 9 ft. or higher. For taller ceilings you may want to use a longer downrod (not included).

**Angle-style mounting** is best suited for angled or vaulted ceilings. A longer downrod is sometimes necessary to ensure proper blade clearance.

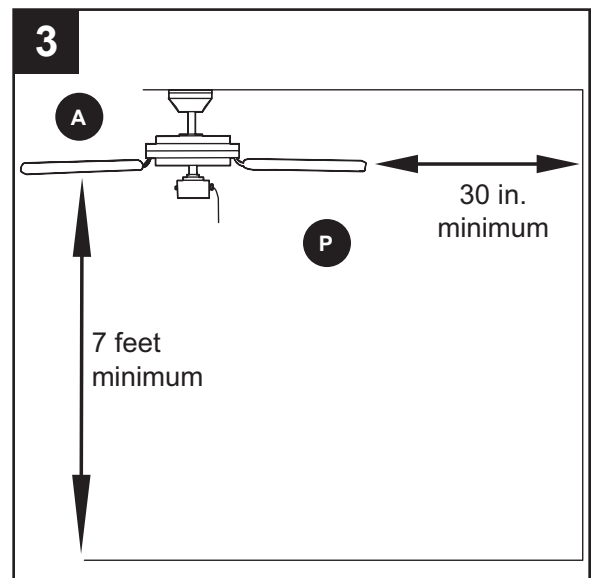
**Note:** If using the angle mount, check to ensure the ceiling angle is not steeper than 45°.

**Closemount-style mounting** is not available for this item.

**Flushmount installation** is not available for this item.



3. Ensure the blades (P) will be at least 30 in. from any obstructions. Also check the downrod (A) length to ensure the blades (P) will be at least 7 ft. above the floor.

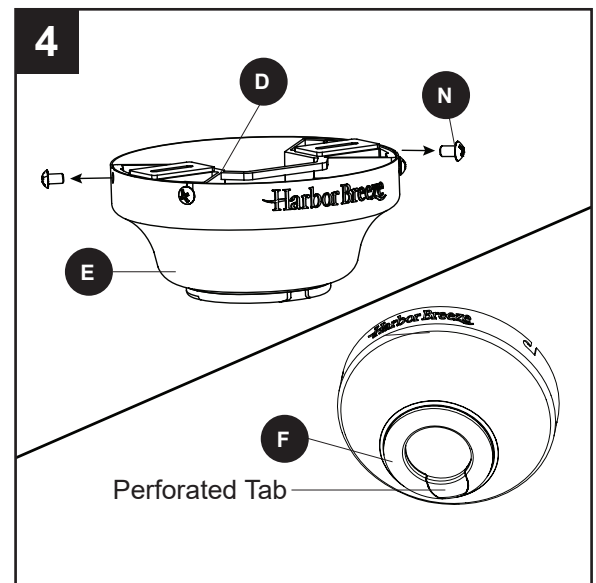


## INITIAL INSTALLATION

- Loosen all four preassembled mounting bracket screws (N), then completely remove the two mounting bracket screws (N) from the round holes of canopy (E). Set aside for later use.

Detach mounting bracket (D) from canopy (E).

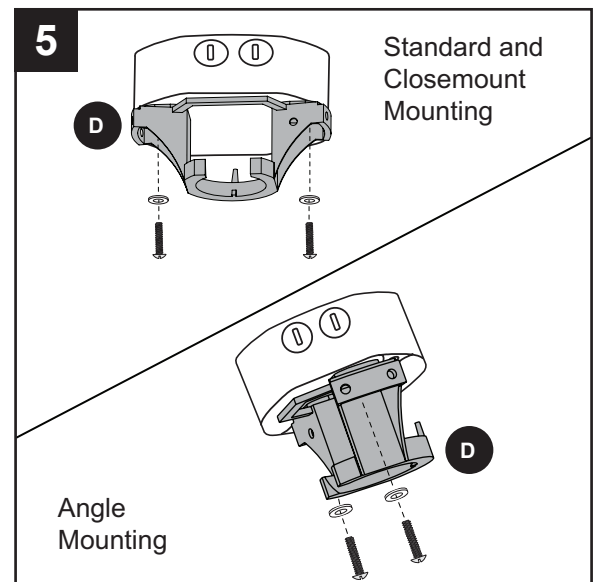
**Note:** If using this item on an angled ceiling, snap out the perforated section of the canopy cover (F).



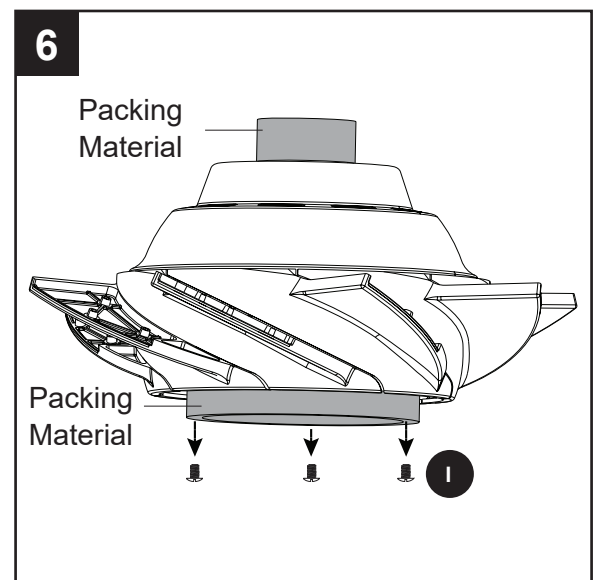
- Attach mounting bracket (D) to outlet box (not included) using screws and washers provided with the outlet box.

**CAUTION:** It is very important to use the proper hardware when installing the mounting bracket (D) as this will support the fan.

**Important:** If using the angle mount, ensure the open end of the mounting bracket (D) is installed facing the floor.



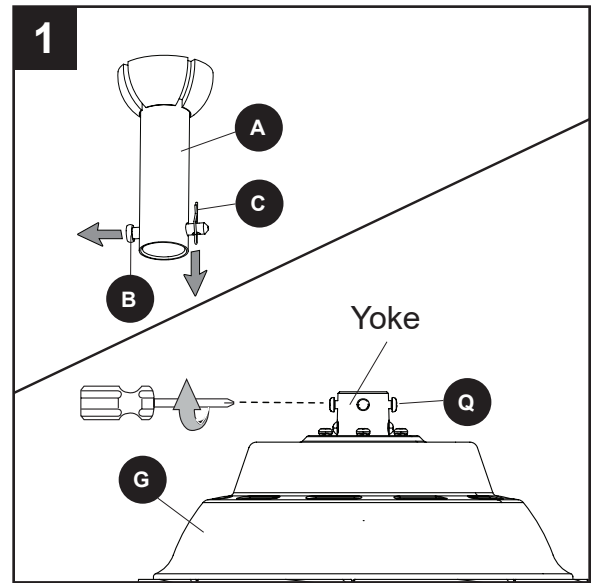
- Remove the three fitter plate screws (I) and the packing material from the motor assembly (G). Discard the orange packing material from the top and bottom of the motor assembly (G) but save the three fitter plate screws (I) for later.



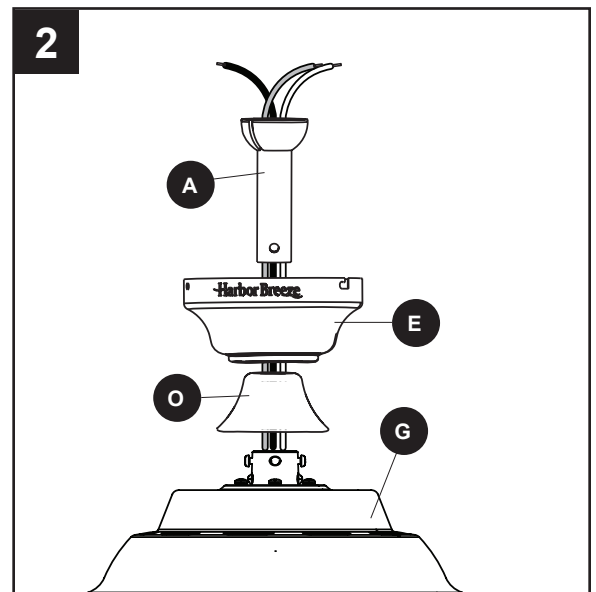


## STANDARD OR ANGLE MOUNTING INSTRUCTIONS

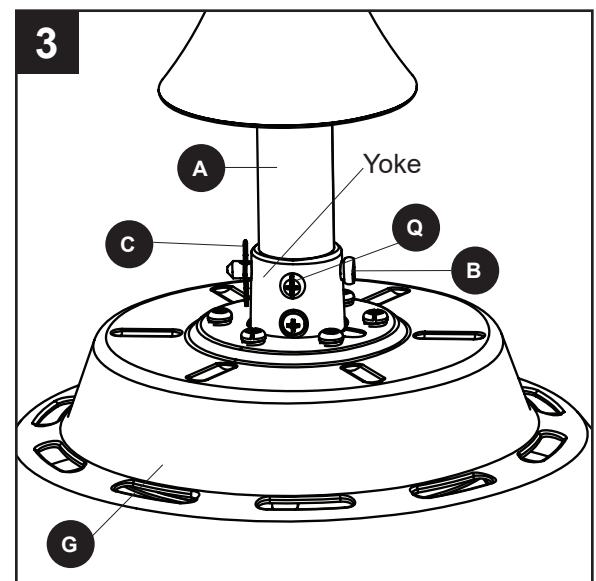
1. Remove the downrod pin (B) and downrod clip (C) from the downrod (A). Then, partially loosen the set screws (Q) in the yoke at the top of the motor assembly (G).



2. Insert the downrod (A) through the canopy (E) and yoke cover (O). Feed the wires from the motor assembly (G) through the downrod (A).

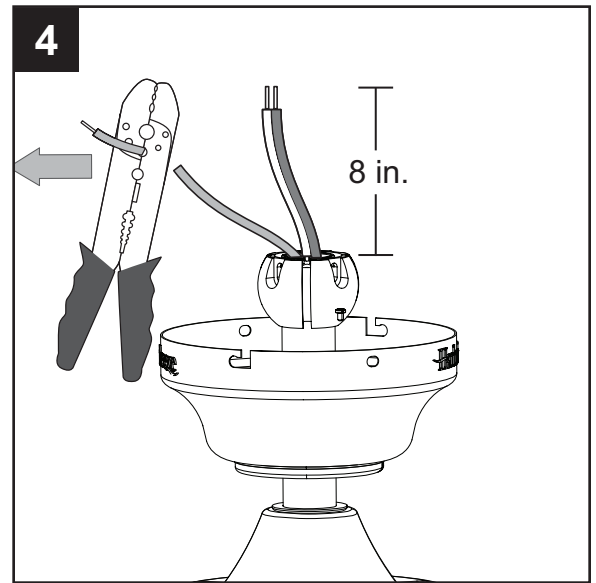


3. Slide the downrod (A) into the yoke of the motor assembly (G), align the holes, then re-install the downrod clip (C) and downrod pin (B). Secure with set screws (Q).



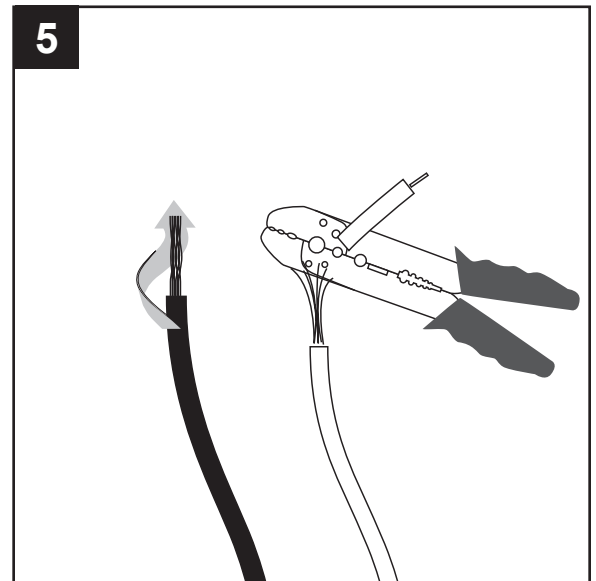
## STANDARD OR ANGLE MOUNTING INSTRUCTIONS

4. Depending on the length of downrod you use, you may need to cut the lead wires back to simplify the wiring. If you decide to cut back the lead wires, take the lead wires and make sure you have pulled them all the way through the top of the downrod. Measure at least 8 inches of lead wire, then cut the excess wire off with wire cutters (not included).



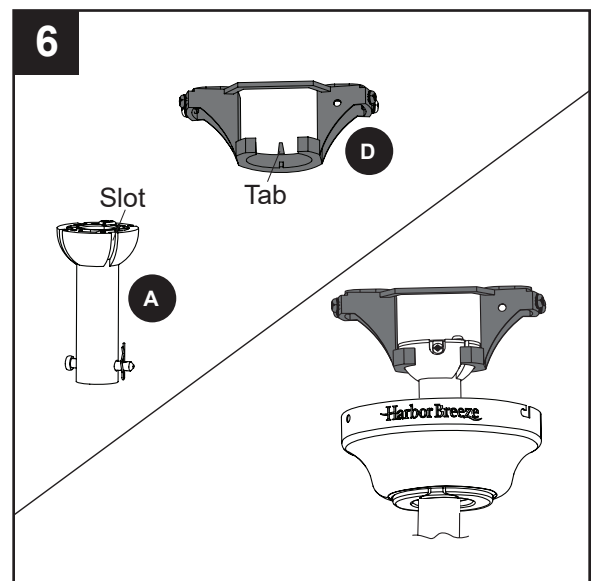
5. If you decided to cut back the lead wire in Step 4, strip 1/2 in. of insulation from the end of the white wire. Twist the stripped ends of each strand of wire within the insulation with pliers (not included). Repeat this step for black wire.

**Note:** If you did not cut back the lead wires in Step 4, Step 5 is not necessary and you may proceed to Step 6.



6. Install the ball end of the downrod (A) into the opening of mounting bracket (D). Align one of the four slots in the ball with the tab in the mounting bracket (D).  
**Note:** The downrod (A) should not rotate if installed correctly.

**⚠ DANGER:** Failure to align the slot in the downrod (A) with the tab of the mounting bracket (D) may cause the fan to wobble or fall, which could result in serious injury or death.



## WIRING

**⚠ WARNING:** To reduce the risk of fire, electrical shock or personal injury, wire connectors provided with this fan are designed to accept only one 12-gauge house wire and two lead wires from the fan. If your house wire is larger than 12-gauge and there is more than one house wire to connect to the two fan lead wires, consult an electrician for the proper size wire connectors to use.

**CAUTION:** Be sure the outlet box is properly grounded or that a ground (green or bare) wire is present.

1. Secure all wiring connections with wire connectors (AA) according to the diagram and these steps:
  - Connect the Bare/Green (ground) supply to Green wires from the fan and the mounting bracket.
  - Connect the Black (hot) supply wire to the Black fan wire.
  - Connect the White (neutral) supply wire to the White fan wire.

**Note:** The Black wire is hot power for the fan. The White wire is common for the fan and light kit. The Green wire is the ground wire. If household supply wires are different colors than referred to above, it is recommended a professional electrician determines the proper wiring.

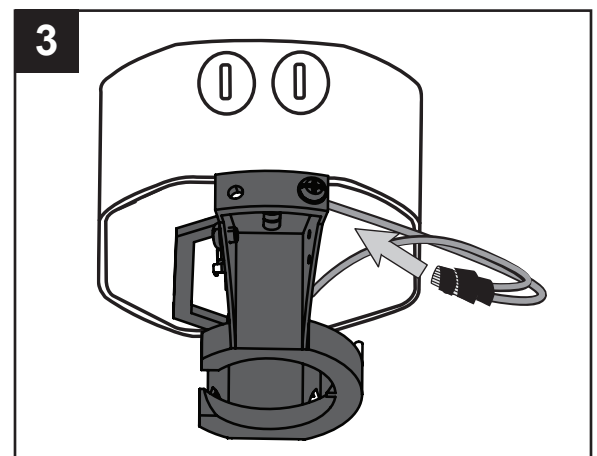
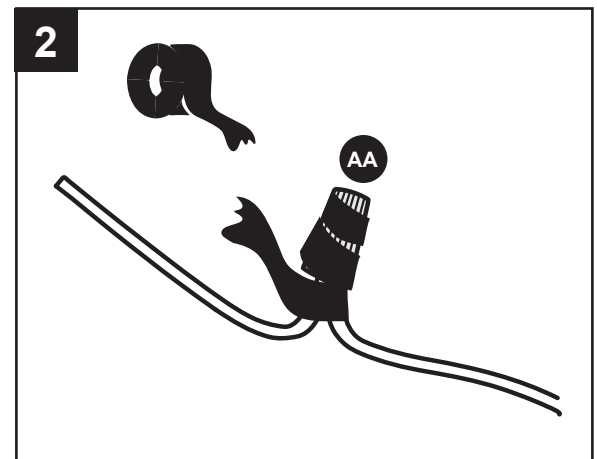
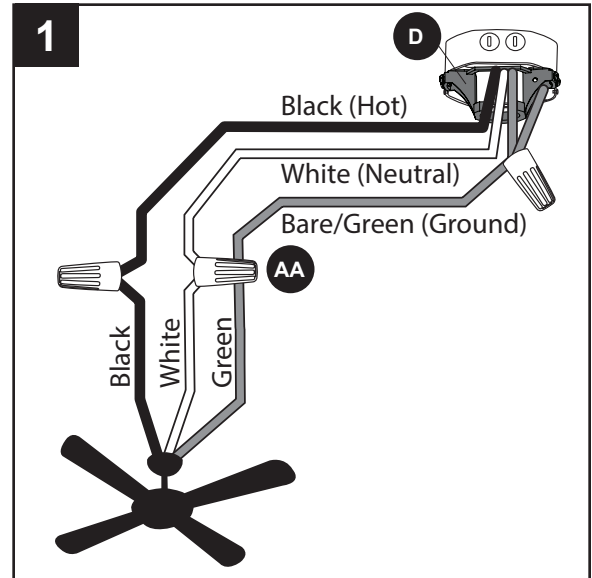
### Hardware Used

**AA** Wire Connector  x 3

2. Wrap electrical tape (not included) around each individual wire connector (AA) down to the wire.

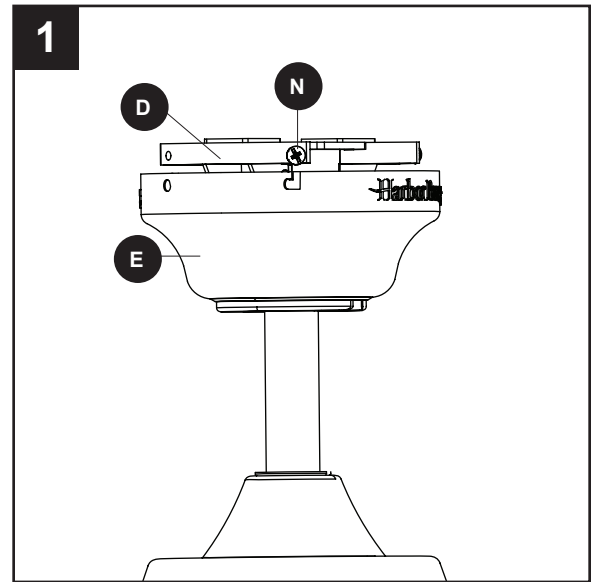
3. Turn the spliced/taped wires upward and gently push the wires and wire connectors into the outlet box.

**⚠ WARNING:** Ensure no bare wire or wire strands are visible after making connections. Place the Green and White wire connections on the opposite side of the outlet box from the Black wire connections.

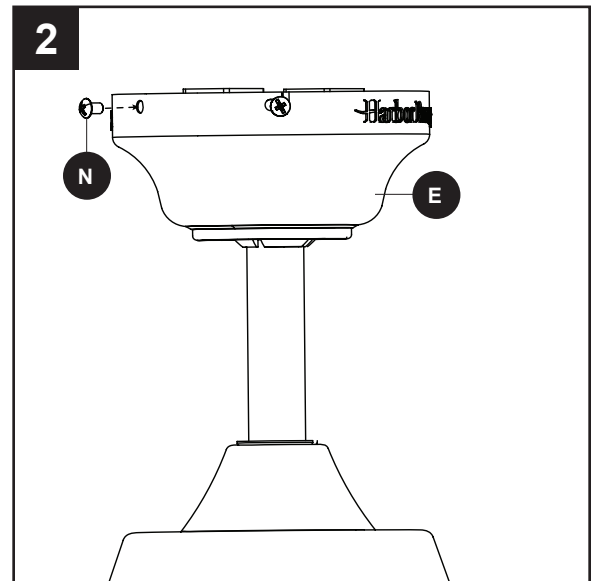


## FINAL INSTALLATION

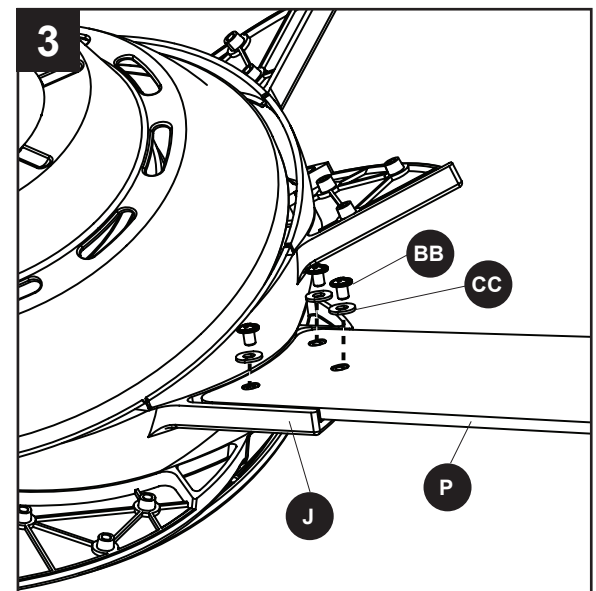
1. Align the canopy (E) over the loosened mounting bracket screws (N) preassembled on mounting bracket (D). Place the keyholes of the canopy (E) onto the mounting bracket screws (N) and rotate the canopy (E) clockwise.



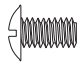
2. Secure the canopy (E) with the mounting bracket screws (N) previously removed (Step 4, page 8). Tighten all mounting bracket screws (N) securely.



3. Partially insert the blade screws (BB) along with blade washers (CC) through the blade (P) and into the blade arm (J). Tighten each blade screw (BB) with a Phillips screwdriver (not included), starting with the one in the middle. Repeat this step for the remaining blades (P) and blade arms (J).

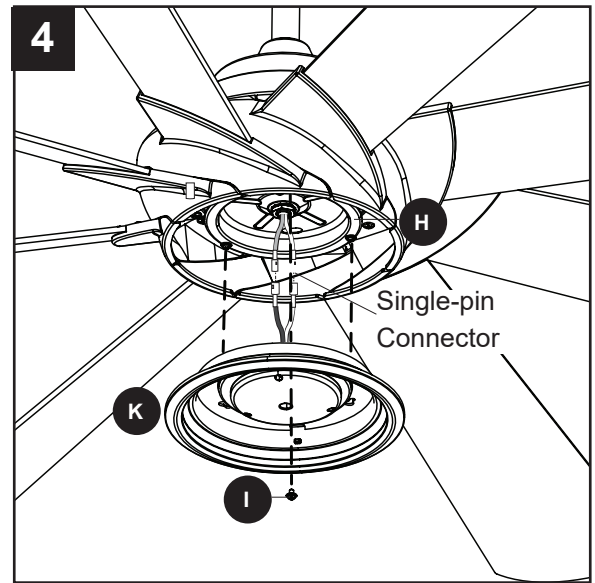


### Hardware Used

<b>BB</b>	Blade Screw		x 24
<b>CC</b>	Blade Washer		x 24

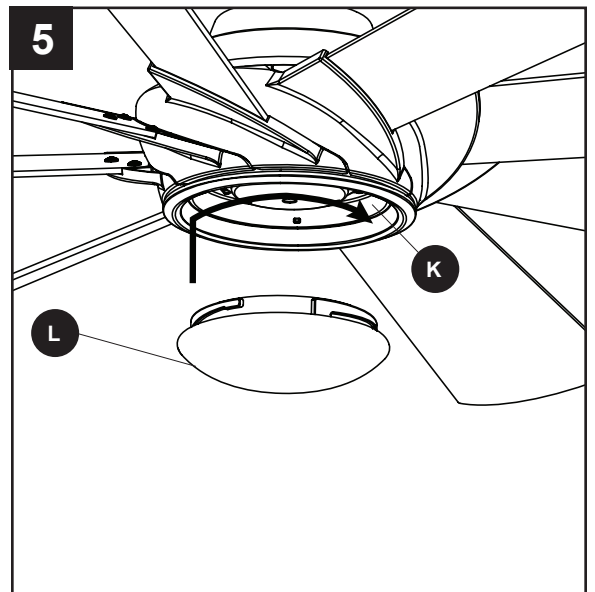
## FINAL INSTALLATION

- To install the light kit (K), connect the single-pin connector from the motor assembly (G) to the single-pin connector from the light kit (K) -- Blue to Black and White to White. Reinsert two previously removed fitter plate screws (I) (step 6, page 8) into the fitter plate (H), but do not tighten. Place the keyholes of the light kit (K) over the fitter plate screws (I) and turn clockwise. Secure the light kit (K) with the remaining previously removed fitter plate screw (I). Tighten all three fitter plate screws (I).

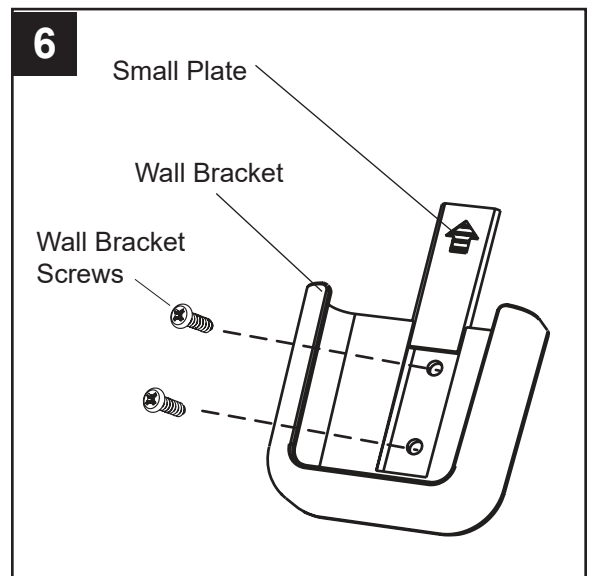


- Lift the glass bowl (L) over the light kit (K) and turn in a clockwise direction until it is secure.

**CAUTION:** Failure to properly secure the glass bowl, may cause the glass to fall, which could cause serious injury.



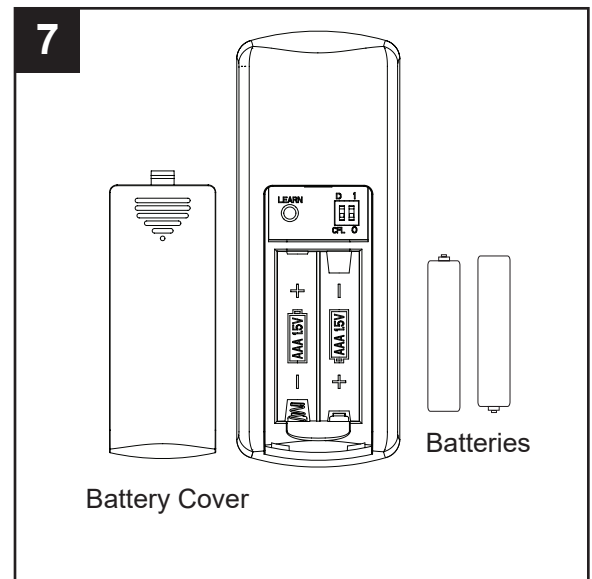
- If desired, the mounting bracket in remote pack (M) can be installed to a wall using the provided mounting screws. The remote from remote pack (M) can be stored in the mounting bracket for easy access.



## FINAL INSTALLATION

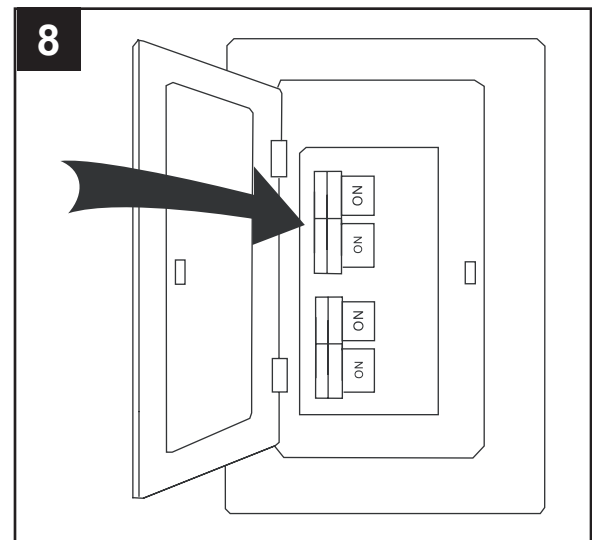
7. Use a flat-head screwdriver, if necessary, to remove the battery cover from the back of the remote found in remote pack (M). Insert two batteries into the remote; ensure polarity of batteries match the polarity indicated in the battery compartment -- positive (+) to positive (+) and negative (-) to negative (-). Replace the back cover and press the fan on/off button on the remote to ensure the LED indicator illuminates and the remote turns on the fan.

**Note:** If remote doesn't turn on the fan, see TROUBLESHOOTING (page 17).



8. Turn on power supply to the fan.

Assembly is complete.



## OPERATING INSTRUCTIONS

1. Using a ceiling fan will allow you to raise your thermostat setting in summer and lower your thermostat setting in winter without feeling a difference in your comfort. **Note:** Wait for the fan to stop before moving the reverse switch.

**In warmer weather,** push the reverse switch left, which will result in downward airflow creating a wind chill effect.

**In cooler weather,** push the reverse switch right, which will result in upward airflow that can help move stagnant, hot air off the ceiling area.

**IMPORTANT:** The reverse switch must be set either completely left or right in order for the fan to function correctly. If the reverse switch is set in the middle position, the fan will not operate.

2. To operate the fan using remote control, press and release the following buttons:

(+) - Increase fan speed

(-) - Lower fan speed

(⏻) - Turns the fan off.

**Sleep Timers:** Turn off fan after 2 hours (2hr), 4 hours (4hr), or 8 hours (8hr). Press Fan On/Off to deactivate.

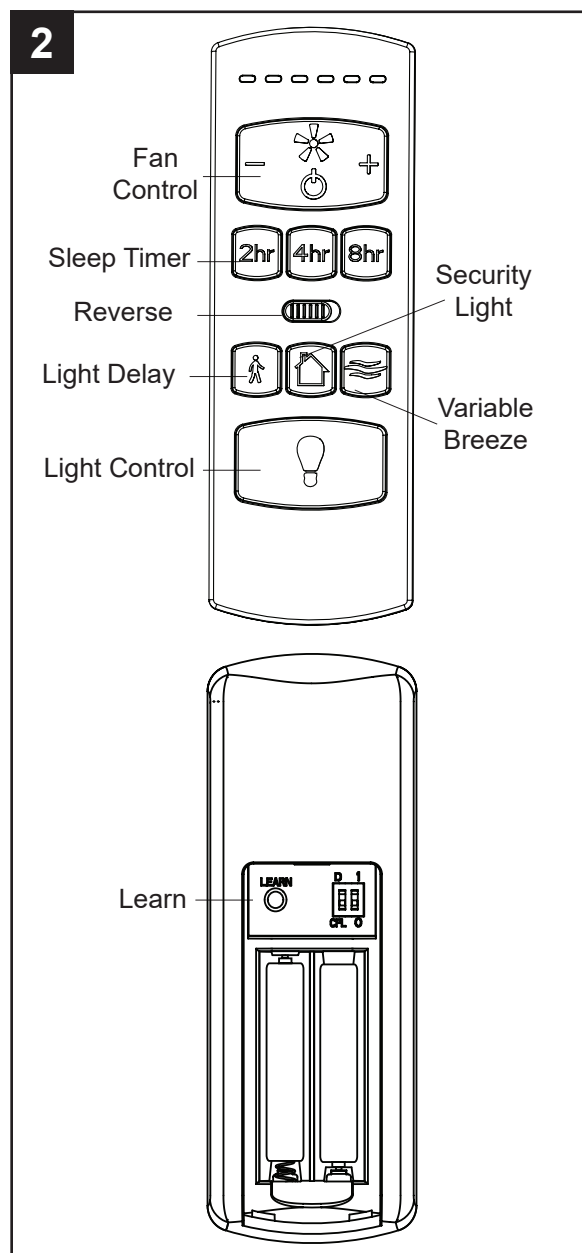
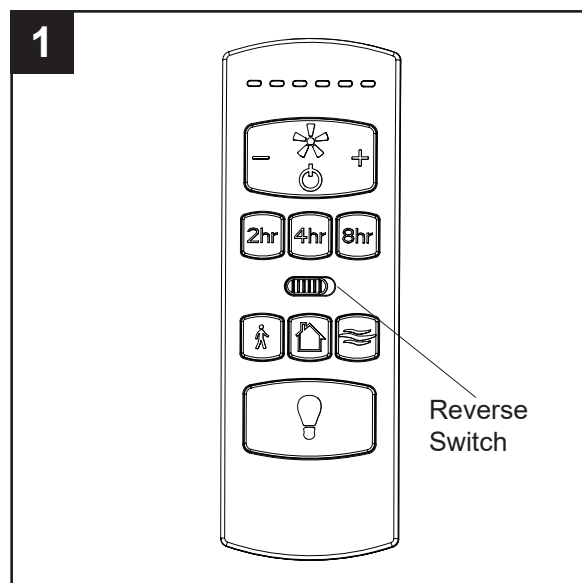
**Light Delay** - Delays turning off light for one minute which allows safe exit from room. Light dims to confirm function is active. Press Light Control button to deactivate and turn the light off.

**Security Light** - Press and hold Security Light button for 3 seconds to activate. Lights cycle on for 5-20 minutes and off for 60 minutes simulating occupancy. Cycle repeats continuously until disabled. Press any other button to deactivate.

**Variable Breeze** - Simulates a natural breeze, as if you were outside.

**Light Control** - Press light control to turn lights off and on. Press and hold light control to dim or brighten the lights.

**Learn** - For any reason, should it become necessary to reprogram the remote, follow these syncing instructions: Turn off the power at the breaker box for at least 10 seconds and then turn the power back on. Within 30 seconds, press and hold the "LEARN" button on the back of the remote for 3 seconds. The fan will turn on at low speed and light will blink once, signaling a successful synchronization.



## CARE AND MAINTENANCE

At least twice each year, lower the canopy to check the downrod assembly, then tighten all screws on the fan. Clean the motor assembly with only a soft brush or lint-free cloth to avoid scratching the finish. Clean the blades with a lint-free cloth.

Battery Replacement: Use 1.5 V, AAA alkaline batteries. **WARNING:** Keep batteries out of reach of children. May be fatal if swallowed. In the event that a battery is swallowed, immediately consult a doctor. Non-rechargeable batteries are not to be recharged. Do not mix different types of batteries such as alkaline, carbon-zinc, or rechargeable batteries. Do not mix old and new batteries. Batteries are to be inserted with the correct polarity. Exhausted batteries are to be removed from the product. Do not dispose of batteries in fire, as they may explode or leak.

Total fixture wattage is 18.5 watts; do not attempt to replace LED.

Shut off the main power supply before you begin any maintenance task. Do not use water or a damp cloth to clean the fan.

## TROUBLESHOOTING

PROBLEM	POSSIBLE CAUSE	CORRECTIVE ACTION
The fan does not move.	<ol style="list-style-type: none"><li>1. The reverse switch is not engaged.</li><li>2. The wall switch is turned off.</li><li>3. The power is off or the fuse (breaker) is blown.</li><li>4. There is a faulty wire connection.</li></ol>	<ol style="list-style-type: none"><li>1. Firmly push the reverse switch completely left or right.</li><li>2. Make sure the wall switch is turned on.</li><li>3. Turn the power on or check the fuse (breaker).</li><li>4. Turn the power off and check all connections at the ceiling outlet box.</li></ol>
The fan is noisy.	<ol style="list-style-type: none"><li>1. The blades are loose.</li><li>2. There is a cracked blade.</li><li>3. The wall control is not compatible with the fan.</li><li>4. The outlet box is not secure.</li><li>5. The mounting bracket is not secure.</li></ol>	<ol style="list-style-type: none"><li>1. Check and tighten all screws that hold the fan blades to the blade arms and the motor.</li><li>2. Replace the cracked blade.</li><li>3. Do not use a full range dimmer switch to control the fan speed.</li><li>4. Ensure the outlet box is secured to the building structure.</li><li>5. Ensure the mounting bracket is secured to the outlet box and that the screws are tight.</li></ol>



## TROUBLESHOOTING

PROBLEM	POSSIBLE CAUSE	CORRECTIVE ACTION
There is excessive wobbling.	<ol style="list-style-type: none"> <li>1. The blades and/or blade arms are loose.</li> <li>2. The blades are unbalanced.</li> <li>3. The fan mounting is not secure.</li> <li>4. The fan is too close to the vaulted ceiling.</li> <li>5. The set screws on the motor assembly yoke is loose.</li> </ol>	<ol style="list-style-type: none"> <li>1. Check and tighten all screws that hold the fan blades to the blade arms and the blade arms to the motor.</li> <li>2. Switch one blade with a blade from the opposite side, or balance the fan using a blade balancing kit (sold separately).</li> <li>3. Turn off the power. Loosen the canopy and verify that the mounting bracket is secure to the electrical outlet box. The bracket must be flush without movement against the outlet box. Verify the outlet box is secure.</li> <li>4. Use a longer downrod (sold separately) or move the fan to another location.</li> <li>5. Lift up the yoke cover and tighten the set screws on the yoke until secure.</li> </ol>
The fan operates correctly, but the lights are not working.	<ol style="list-style-type: none"> <li>1. The light kit wire plugs are not connected properly.</li> <li>2. There is a faulty wire connection.</li> </ol>	<ol style="list-style-type: none"> <li>1. Ensure the single-pin connectors are properly secured.</li> <li>2. Turn the power off and check all connections at the ceiling outlet box.</li> </ol>
Remote control does not work.	<ol style="list-style-type: none"> <li>1. Power surge may have cleared memory and remote needs to be re-synced to the receiver.</li> <li>2. Battery in remote control needs to be replaced.</li> <li>3. Interference from another remote.</li> </ol>	<ol style="list-style-type: none"> <li>1. Turn off the power at the breaker box for at least 10 seconds and then turn the power back on. Within 30 seconds, press and hold the "LEARN" button on the back of the remote for 3 seconds. The fan will turn on at low speed and light will blink once, signaling a successful synchronization.</li> <li>2. Insert new AAA batteries in battery compartment of the remote control (see page 14).</li> <li>3. If there are several fans in close proximity, turn power off to other fans and re-sync the remote (see Corrective Action 1 above).</li> </ol>

## LIMITED LIFETIME WARRANTY

---

Set forth below, the manufacturer warrants the fan motor for this ceiling fan to be free from defects in workmanship and material for the life of the product. Also, subject to the limitations below, the manufacturer warrants all ceiling fan parts ("ceiling fan parts" excludes the motor and parts made in whole or in part with glass) to be free from defects in workmanship and material for a period of one year after the date of purchase by the original purchaser at retail.

All claims must be made by the original purchaser from an authorized dealer, whether such purchaser purchased the product through a store or contractor. Ceiling fan part defects must be reported within the first year from the date of purchase. Parts made in whole or in part with glass and the finishes of metal and other surfaces are not warranted.

Purchasers are responsible for all costs of removing and reinstalling the product. Any damage to any part caused by ordinary wear and tear, accident, misuse, or improper installation, is not covered by this warranty. The manufacturer assumes no responsibility whatsoever for fan installation. Any service performed by a non-licensed electrician will render the warranty invalid.

The manufacturer's sole responsibility shall be to repair or replace the motor, parts, or product within the terms stated above. The manufacturer shall not be liable for any loss or damage of any kind, including any incidental or consequential damages resulting directly or indirectly, from any breach of warranty, express or implied, or any other failure of this product. Some states do not allow the exclusion or limitation of incidental or consequential damages so this limitation may not apply to you.

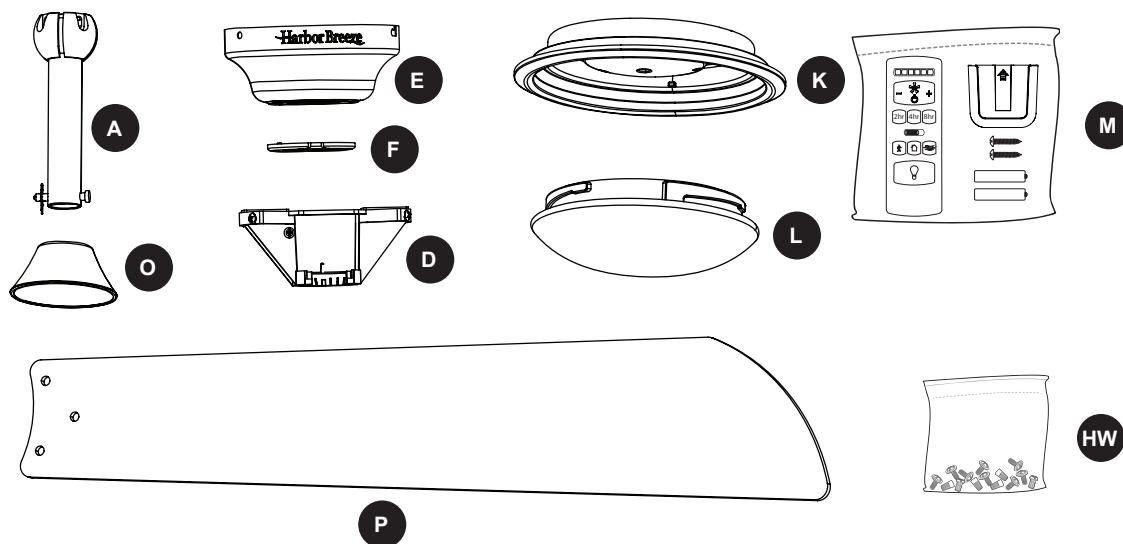
If the original purchaser ceases to own the fan, this warranty is voided.

Should the purchaser encounter a problem with your fan related to defects in workmanship or materials within the warranty period associated with the defective part, the manufacturer agrees to replace the defective part without charge, or at its option, to replace the ceiling fan with a comparable or superior model.

The manufacturer's warranties are limited to the written warranties set out in this ceiling fan limited lifetime warranty. All other express and implied warranties, including, without limitation, the implied warranty of fitness for a particular purpose and the implied warranty of merchantability is disclaimed. Some states do not allow the disclaimer of implied warranties, so this disclaimer may not apply to you.

## REPLACEMENT PARTS LIST

For replacement parts, call the customer service department at **888-251-1003**, 8 a.m. - 8 p.m., EST, Monday - Sunday. You could also contact us at **ascs@lowes.com**.



PART	DESCRIPTION	PART #	COVERED UNDER WARRANTY
A	Downrod	4L000008960	YES - 1 year
D	Mounting Bracket	4L000008970	YES - 1 year
E	Canopy	4L000008980	YES - 1 year
F	Canopy Cover	4L000008990	YES - 1 year
K	Light Kit	4L000009000	YES - 1 year
L	Glass Bowl	4L166780000	NO
M	Remote Pack	4L000009010	YES - 1 year
O	Yoke Cover	4L000000230	YES - 1 year
P	Blade	4L084830001	YES - 1 year
HW	Hardware Kit	4L000009020	NO