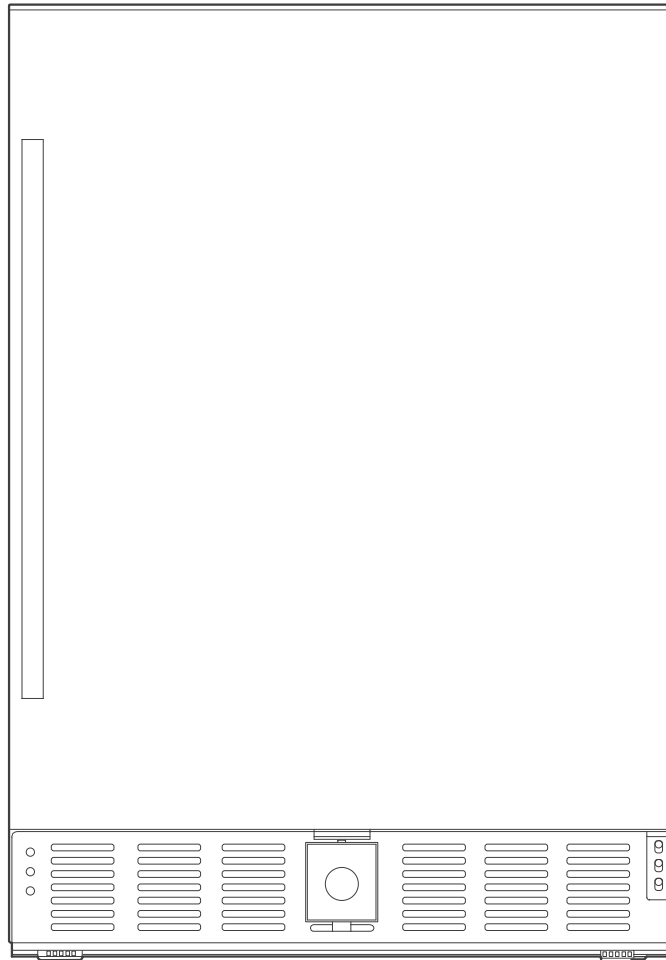


COMPACT REFRIGERATOR

INSTRUCTION MANUAL



Model No.:BC-145B

Read this booklet thoroughly before using
and save it for future reference

FOR BUILT-IN INSTALLATION

CONTENTS

IMPORTANT SAFEGUARDS	1
NAME OF THE PARTS	4
BEFORE PUTTING INTO USE	4
TIPS FOR ENERGY SAVING	5
HOW TO INSTALL	5
HOW TO OPERATE	7
CLEANING AND MAINTENANCE	9
TROUBLESHOOTING GUIDE	10

Before using the electrical appliance, there are some basic safety precautions to be followed:

1. **DANGER:** Risk of child entrapment.


Before you throw away your old refrigerator or freezer:

- Take off the doors.
- Leave the shelves in place so that children could not climb inside easily.

2. The appliance must be correctly installed and connected to the power supply in accordance with the installation instructions before it is used. (see: "HOW TO INSTALL").

WARNING: Keep all ventilation openings clear of obstruction, including that in the appliance enclosure or in the built-in structure

WARNING: Do not use mechanical devices or any other means that not recommended by the manufacturer to accelerate the defrosting process.

 **WARNING:** Do not use electrical appliances not recommended by the manufacturer in the food storage compartments.

 **WARNING:** Do not damage the refrigerant circuit.

3. Do not store explosive substances such as aerosol cans with a flammable propellant in this appliance.

4. The main power supply must be properly grounded. Never remove the ground prong from the plug and never use the two-prong adapter.

5. Do not run the cord over carpeting or other heat insulators. Do not cover the cord. Keep the cord away from traffic areas and do not submerge it in water.

6. Do not operate the appliance with a damaged cord or plug. If the appliance shows any signs of malfunction or impairment, please return it to an authorized service center for examination or repair.

7. If the supply cord is damaged, it must be replaced exclusively by the manufacturer or a qualified service center to prevent potential hazards.

8. This refrigerator must be positioned where the plug is accessible. Never unplug the unit often by pulling on the power cord. Always grasp the plug firmly and pull straight out from the outlet.

9. Do not use an extension cord as possible for this can degrade the performance of the unit. If an extension cord must be used, use only those corresponding to the appliance's power consumption rating to prevent overheating. Keep extension cords clear of walkways to avoid tripping risks.

10. When transporting the refrigerator, keep the unit in the upright position. Do not tilt the unit beyond 45 degree or place the unit in upside down position. Do not tip over.

11. Do not touch the cooled surfaces while the appliance operates , especially not with wet hands, because your skin may stick to the cold surfaces.

12.It is recommended that the refrigerator is positioned away from any combustible sources such as gas, petrol, alcohol, lacquer and banana oil, etc. The aforementioned objects should not be stored in the refrigerator under any circumstances.

13. If the unit fails to cool properly, dispose of the spoiled food as needed.

14.Unplug your unit first before cleaning or making any repairs.

NOTE: If for any reason this product requires repair, we strongly recommend that a certified technician perform the service. Repairs made by non-qualified personnel will void the warranty.

15. Do not defrost the appliance with other electric devices (hair dryer etc.)and never scrape the ice or frost layer with sharp tools.

 **WARNING:** Do not damage the refrigerant circuit.

16. The rating nameplate is located on the inside or the rear and side wall outside the unit.

17.The appliance can be used by people with reduced physical sensory or mental capabilities, as long as they have been given supervision or instruction concerning the proper use of the unit and understand the potential hazards involved.

18. Please dispose of the appliance according to the local regulations as the appliance contains flammable gas and refrigerant.

19. Follow local regulations regarding disposal of the appliance due to flammable refrigerant and gas. All refrigeration products contain refrigerants, which under the guidelines of federal law must be removed before disposal. It is the consumer's responsibility to comply with federal and local regulations when disposing this product.

20. Do not operate your refrigerator in the presence of explosive fumes. Do not use flame or make fire near the unit.



Safety Instruction for the Refrigerant

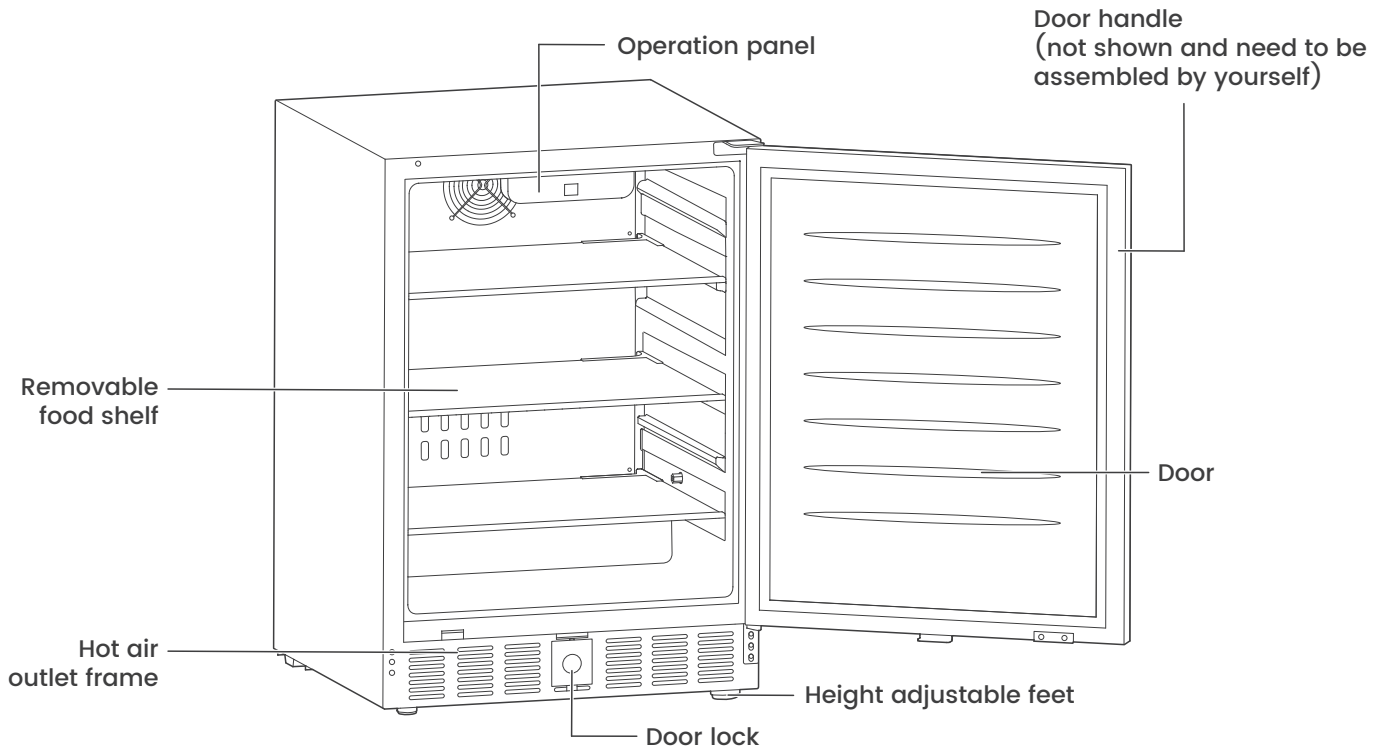
DANGER–Risk of Fire or Explosion. FLAMMABLE REFRIGERANT used. Do not use mechanical device to defrost refrigerator. Do not puncture the refrigerant tubing.

DANGER–Risk of Fire or Explosion. FLAMMABLE REFRIGERANT used. To be repaired only by trained service personnel.

DANGER–Risk of Fire or Explosion. FLAMMABLE REFRIGERANT used. Dispose of the unit in accordance with the federal or local regulations.

HOUSEHOLD USE ONLY

SAVE THESE INSTRUCTIONS



BEFORE PUTTING INTO USE

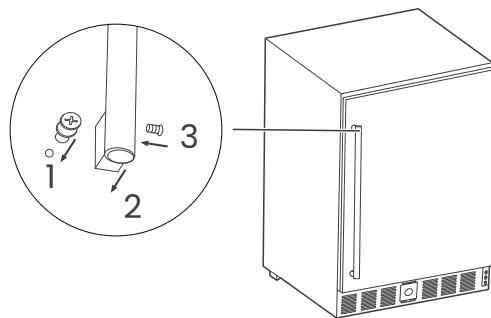
1. Before connecting the appliance to the power supply, let the unit stand upright for 4 hours, which will reduce the possibility of the cooling system malfunctioning due to the improper handling and moving during transportation.
2. Clean your unit thoroughly before putting into use. (see "clean and maintenance")
3. Refer to the parts diagram on the next page to insure proper positioning of internal components.

1. Keep the refrigerator doors closed as much as possible, particularly in warm or humid conditions.
2. Maintain adequate ventilation space around the rear and sides of the unit. This unit can either be built-in installation or stand alone. When in built-in installation, do not place the rear of the unit against the wall too closely.
3. Allow warm food to cool to room temperature before placing it in the refrigerator.
4. Do not obstruct the hot air outlet frame at the front bottom of the unit.

HOW TO INSTALL

Installing instruction of door handle

For installing the handle, please follow the below steps:

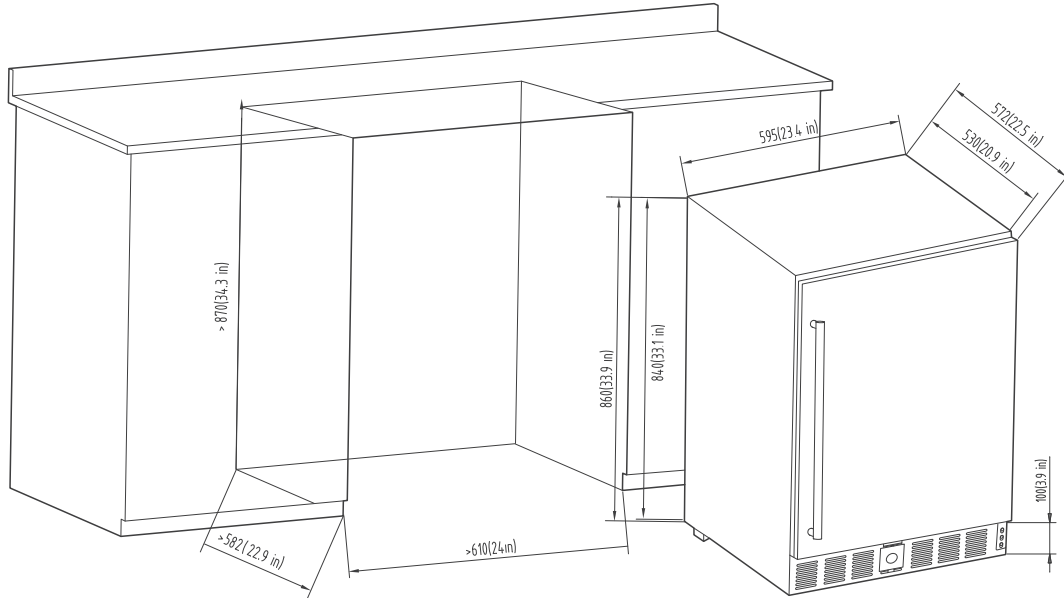


1. Use a Phillips screwdriver to pre-install the two mounting screws on the door.
2. Align the hole in the handle with the preinstalled screws and insert it
3. Fasten the handle by fixing the two screws into the handle with the provided allen wrench.

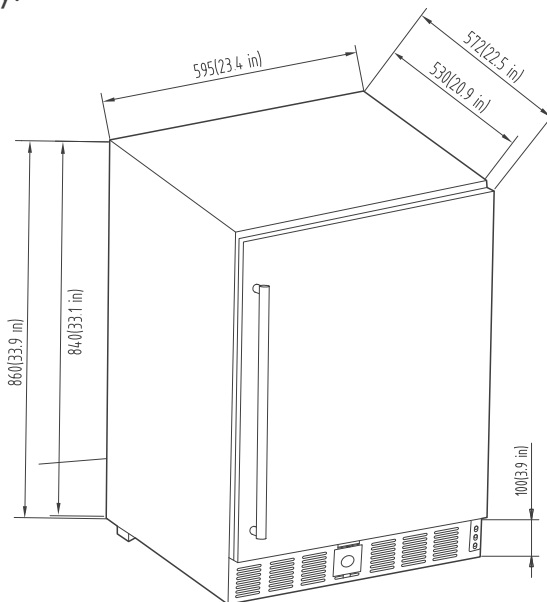
1. Install the unit at a location away from extreme heat and cold. This unit should be far away from the heating source, such as stoves, heater, or radiators, and should be prevented from direct sunlight.
2. Place the unit on a horizontal surface that is strong enough to support the unit when it is fully loaded. Carpeting or any other soft or uneven surfaces are not recommended. You can adjust the front feet located at the bottom of the unit to level it.
3. Allow sufficient clearance between the unit and the sidewall to ensure that the door will be opened without obstruction.

4. This refrigerator is designed for recessed or built-in installation.

5. For **under-counter** built-in installation, please follow the following diagram and leave enough space for the unit.



6. For **free-standing** installation, it is suggested to allow 2 inches of space between the unit's side, rear and the wall. In addition, sufficient clearance (160 degree) should be maintained to allow the door to open properly.



7. The appliance must be correctly connected to the corresponding power supply and be certainly grounded.

Note: The front grille must not be obstructed.

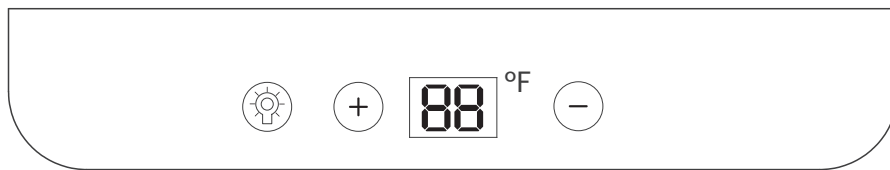
Note: The refrigerator is not designed to be installed in an outside area such as a garage or a porch. Ambient temperatures of below 50 or above 90 Fahrenheit will hinder the proper performance of the appliance.

Starting your new refrigerator

Note: If the unit is brought in from outside in the winter season, give it a few hours to warm up to the room temperature before plugging it in. Also, after transportation and moving of the unit, please wait for at least 4 hours before plugging it in.

1. Remove the packaging material.
2. Clean the unit thoroughly. Wipe the outside with a soft dry cloth and the interior with a clean moist cloth.
3. Connect the power cord to a standard wall outlet, you will hear a beep sound, which is normal. And then the actual internal temperature will be shown on the control panel.
4. Do not put food into the unit within 2 hours after the power on.
5. Note that you can lock the door to avoid children accidentally straying into. Insert the attached key into the door lock on the bottom of the appliance and rotate clockwise for one and a half cycles to lock the door.

The operation panel






There are three buttons and a temperature display window on the control panel, letting you operate the unit at your desirable way.

Temperature adjustment

Press the two buttons (+) & (-) to adjust the set temperature to your desired value. With each pressing, the temperature will change 1 Fahrenheit.

The default setting is 39 Fahrenheit and the setting range is from 32 to 50 Fahrenheit.

Interior Light control

The unit has built with an internal LED light in the cooling compartment, which is controlled by the magnetic door switch and the light button "  " on the control panel. Normally when you open the door, the LED light will be on, while closing the door, the LED light will be off at once. But if you press the "  " button for more than 3 seconds, the supply power to the LED light will be cut off, neither opening nor closing the door will activate it. If you want to remove the lock to the LED light, just press the "  " button for more than 3 seconds again.

Note: Please wait for 3 to 5 minutes before restarting the unit after unplugging it, for the unit may fail to operate properly if being restarted too quickly.

1. The refrigerator should be cleaned on a regular basis.

Cleaners: Never use harsh, abrasive cleaners or any other heavy-duty cleaners and solvents.

Exterior: Wipe the surface with damp, sudsy cloth, rinse and dry it. For stubborn stains and for periodic waxing, use silicon wax.

Refrigeration section: Wash the shelves and other removable parts in warm sudsy water, rinse and dry them. Wash the rest of the interior with warm sudsy water or baking soda solution (3 tablespoons to 1 liter of water), rinse and dry it.

Magnetic door seals: Wash it with warm sudsy water.

The Finishing Touch: Replace all parts and return the thermostat dial to your desired setting.

2. It is necessary to maintain enough ventilation space around the unit to attain the proper performance, dissipation of heat, high efficiency and low power consumption. Clearance of a minimum 2 inches should be maintained at the rear and sides of the unit. And especially do not obstruct the hot air outlet frame. (see: "HOW TO INSTALL")

3. To attain proper performance, be sure to plug the appliance into a properly grounded 115/60 Hz outlet.

4. Do not modify the power cord under any circumstance to allow the unit to be plugged into a non-grounded outlet. To avoid overheating damage to the power cord, please ensure that it does not come in proximity or in direct contact with the compressor of the unit.

5. Please avoid installing the refrigerator in a location where the appliance will come in contact with water or moisture to minimize the risk of metal parts rusting.

6. The refrigerator should not be installed near any heat source or in a location where it will come in direct contact with the sunlight.

7. The components, if need to be replaced, should be replaced with same components, and should be replaced by the manufacturer or its service agent or a similarly qualified person in order to minimize the risk of possible ignition and degradation of the cooling performance due to incorrect parts or improper maintenance.

WHAT TO DO

When the fridge is not in use for a prolonged period.

1. Remove the plug from the outlet.
2. Remove all contents from the fridge.
3. Dry the interior and leave the door open for a few days.

When the refrigerator does not work:

1. Check if there is a power failure.
2. Check if the power plug is plugged into the power outlet
3. Check that the fuse has not blown in main supply circuit.

When you wish to move the fridge:

1. Secure all movable parts and contents. (pack them separately if necessary.)
2. Transport the fridge only in an upright position, for the compressor may be damaged in any other position.

If the refrigerator seems too warm inside:

1. Check to see that the door is closing properly and the door seal is not damaged.
2. Check that the interior circulation is not obstructed by having too many goods stored. (The fridge is overloaded)
3. Did you store anything hot without cooling it to room temperature first?
4. Is there sufficient clearance around all sides and above the fridge?
5. Do anything obstruct the front hot air outlet frame?

When the refrigerator is cooling excessively:

1. The temperature may be set too low.
2. If you place food that contain a lot of moisture directly under the cool outlets, they will freeze easily. This does not indicate a unit malfunction.

When the defrosting water overflows inside the refrigerator and onto the floor:

1. Check that the drain pipe and the drain hose are not clogged.
2. Check that the drain pan is housed properly.

When condensation forms on the outside of the refrigerator:

1. Condensation may form on the outside of the unit when the humidity level is too high such as during a wet season, the same result as the condensation formed when chilled water is poured into a glass. Therefore, this does not indicate a failure. Wipe it dry with a dry cloth.

If the fridge starts making any unusual noises:

1. Is it wobbling? Re-level it and check if it now operates properly.
2. Have any objects fallen behind the fridge? If so, remove them and check if the unit now operates properly.
3. Are any containers inside the fridge vibrating or resonating? If so, rearrange them and then check if it now operates properly.

ROWAN ELECTRIC APPLIANCE LLC
8:30am-5:30pm P.S.T. Monday to Friday

Thank you for purchasing this product! If you have any questions about the product such as missing parts, damaged products, product assembling and operation, please contact us via customer service phone:
213-446-7172