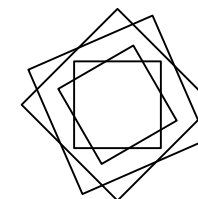
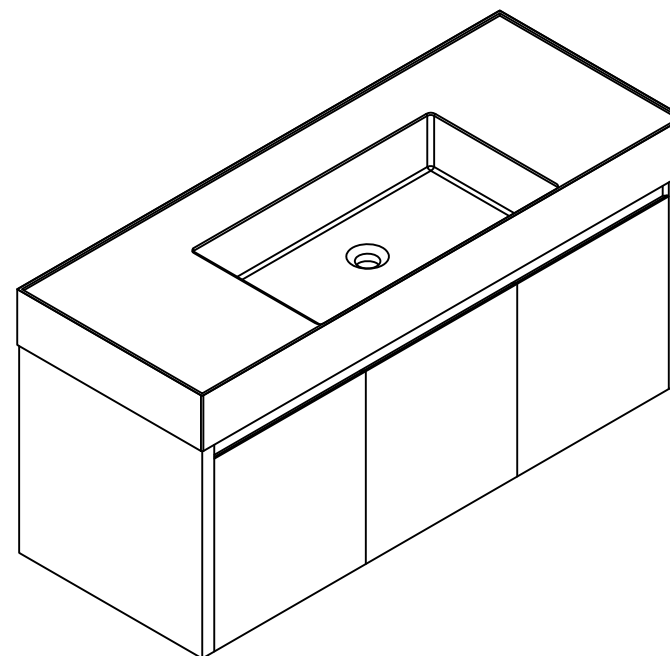


THANKS FOR WATCHING

Your feedback is invaluable to us and we would love to hear about your experience. Please take the time to leave us a review.












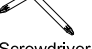
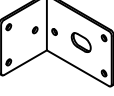


Thank you for shopping with us!

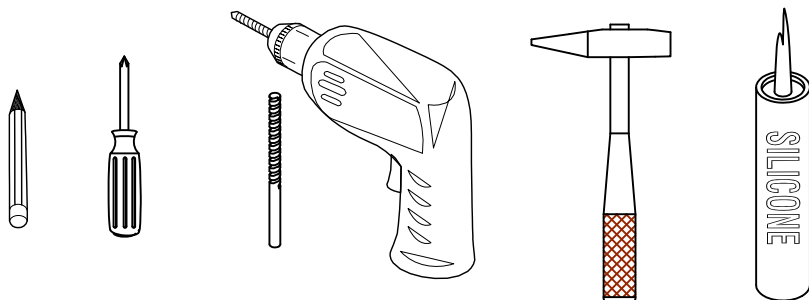
We encourage you to take a few minutes to go through this booklet. It contains important information on installation and care tips to keep your furniture looking as good as new.

Item NO.:BV B03548

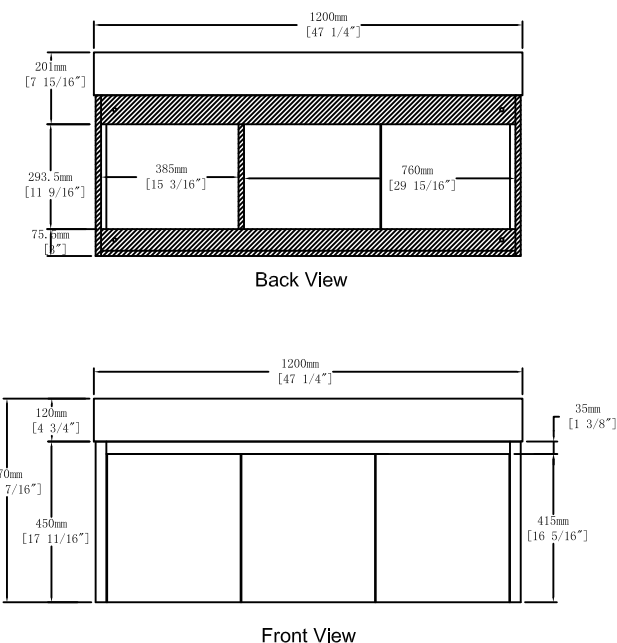
Hardware

NO.	Draw	QTY	NO.	Draw	QTY
A	 Screws Ø4x14mm	56	H	 Bracket (19x19x35mm)	2
B	 Two-in-one connector	23	I	 Hinges (Internal hiding)	4
C	 Two-in-one connector	23	J	 Hinges (Half cover)	2
D	 Wood plug	5	K	 Screws Ø4x25mm	1
E	 Plastic anchor(Ø10mm)	4	L	 Anti-collision gasket	6
F	 Screws for fix on the wall	4	M	 Screwdriver	1
G	 Bracket (53x70x44mm)	2			

Recommended tools



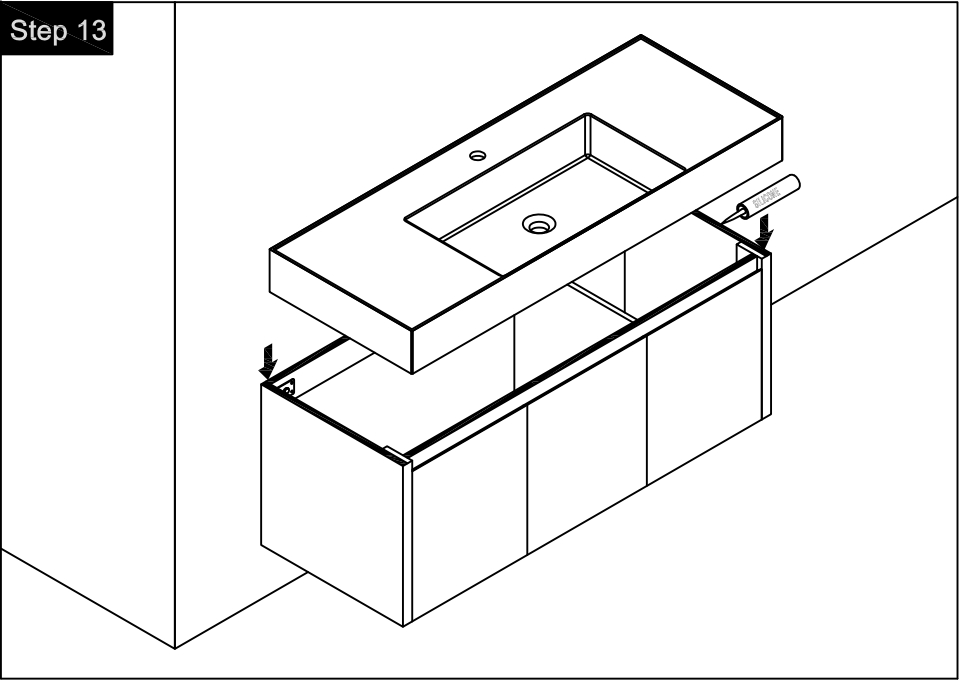
Dimensions



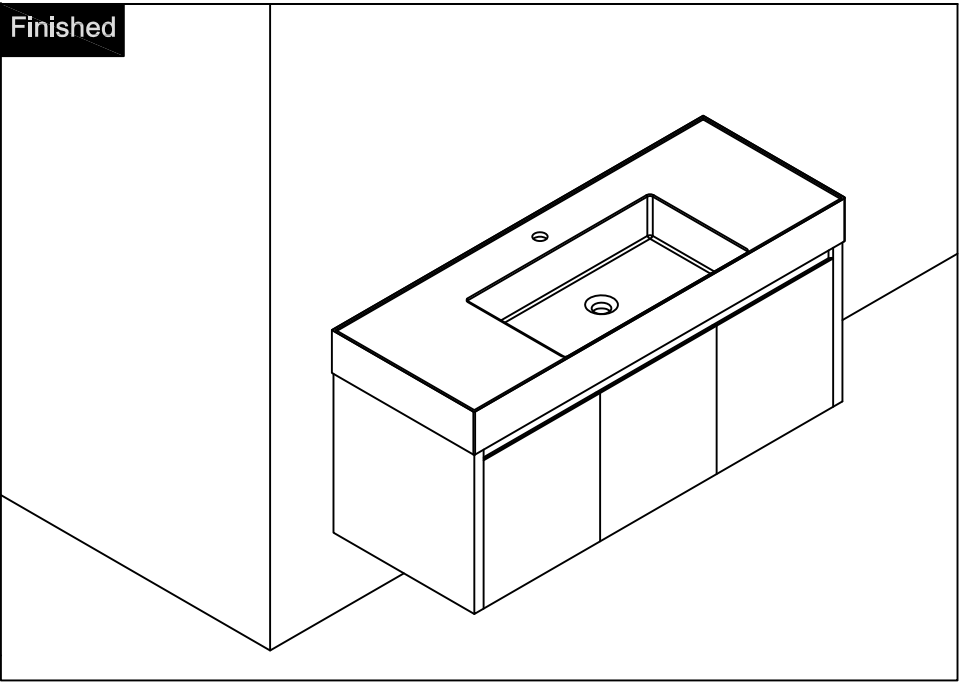
CARE CLEANING AND MAINTENANCE

1. Dust regularly with a soft , dry cloth.
2. Avoid the use of all chemicals household cleaners, abrasives, or cleaners that contain lemon, vinegar, or other acids that may damage the finish.
3. Excessive exposure to sunlight and extreme changes in temperature and moisture can damage wood furniture.
4. The sink top is resilient, but care needs to be taken to preserve its appearance.
5. Do not place hot appliances, such as curling irons and hot hair dryers directly on the countertop. Wipe spills immediately.

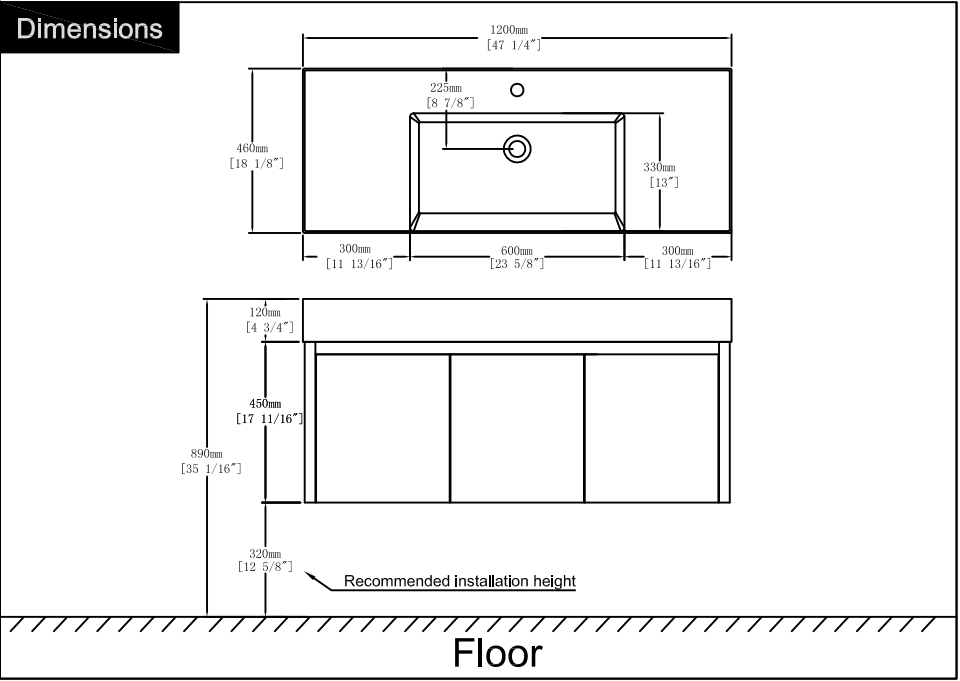
Step 13



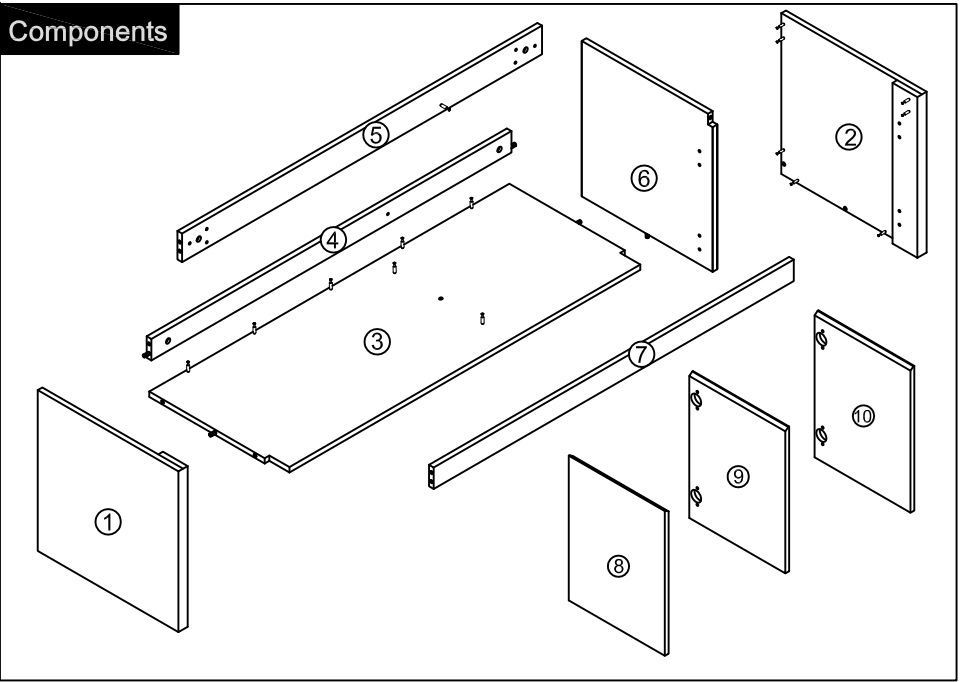
Finished



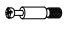


Dimensions

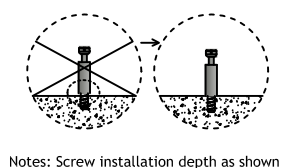
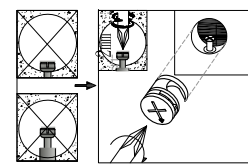
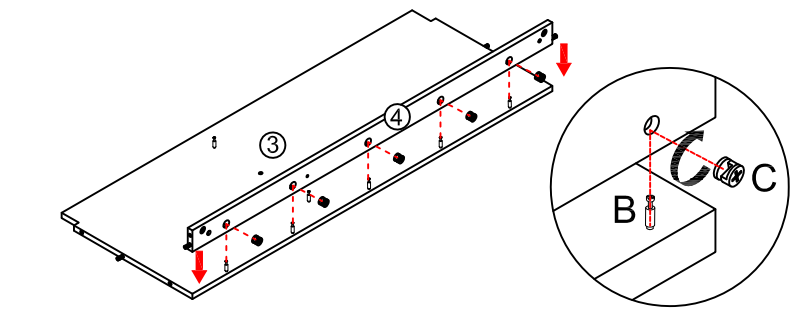


Components

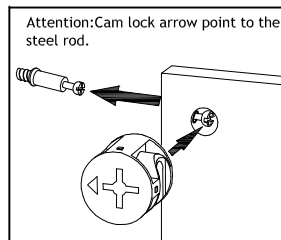


Step 1

	x5
	x5
	x1



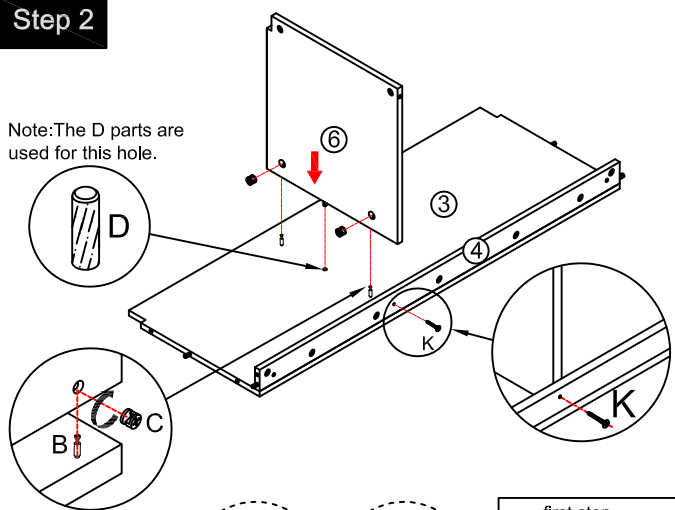
Notes: Screw installation depth as shown

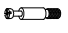


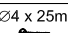
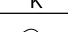



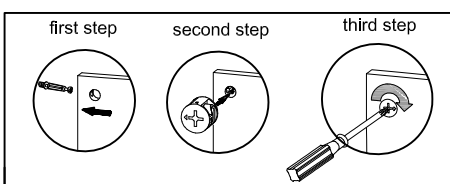
Attention: Cam lock arrow point to the steel rod.

Step 2

Note: The D parts are used for this hole.



	x2
	x2
	x1
	x1
	x1
	x1



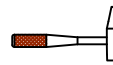


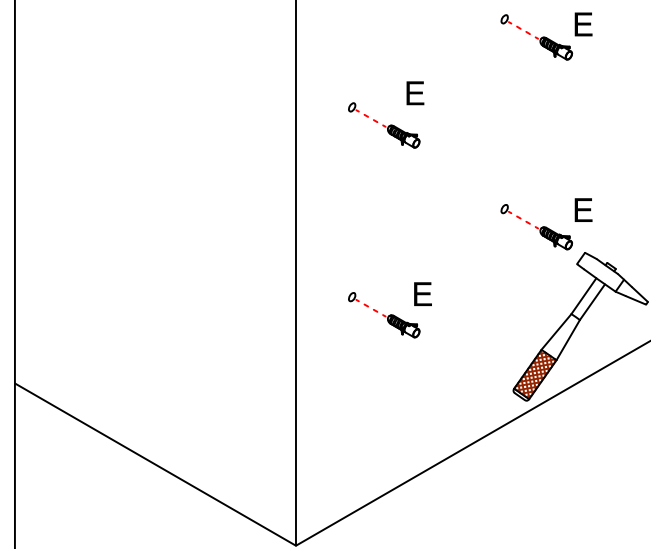
first step

second step

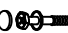

third step

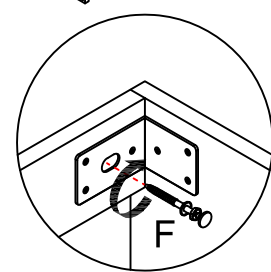
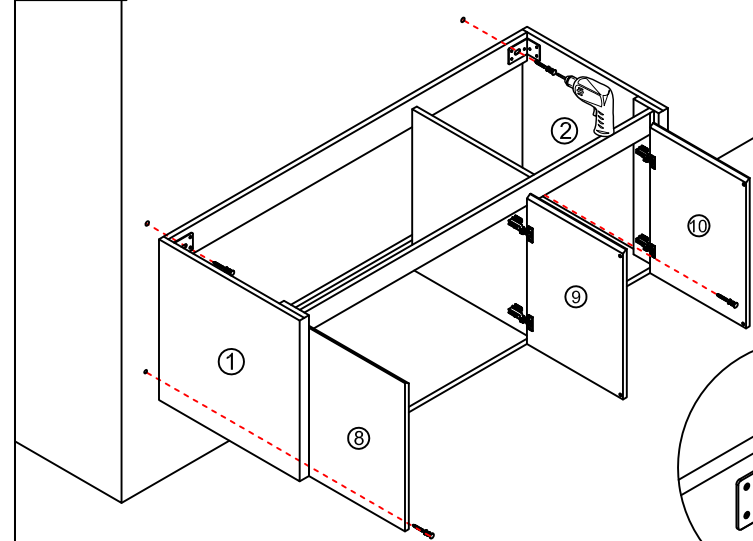
Step 11

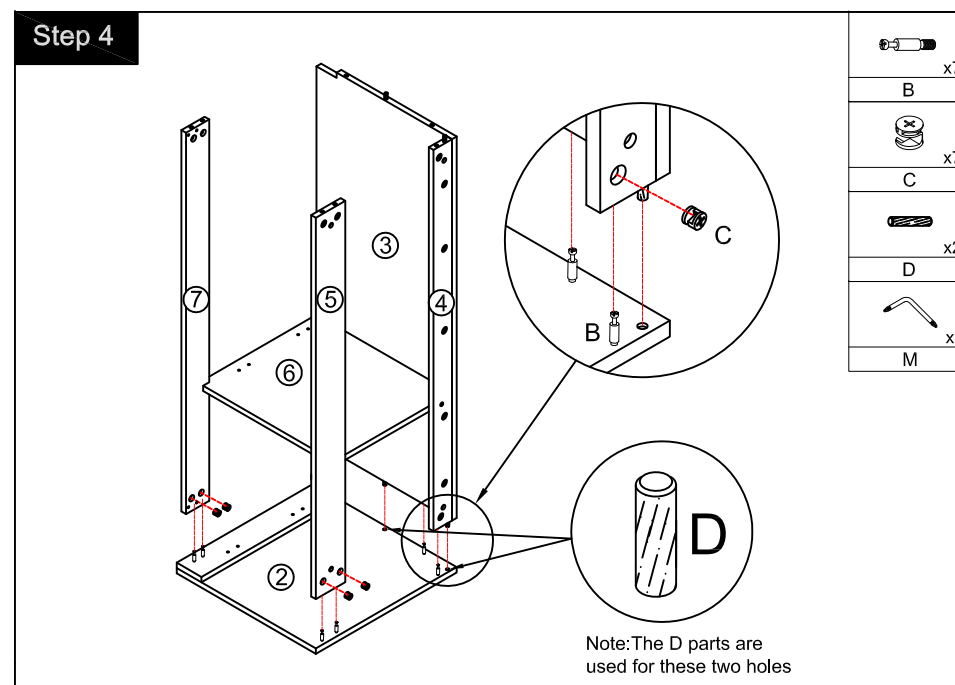
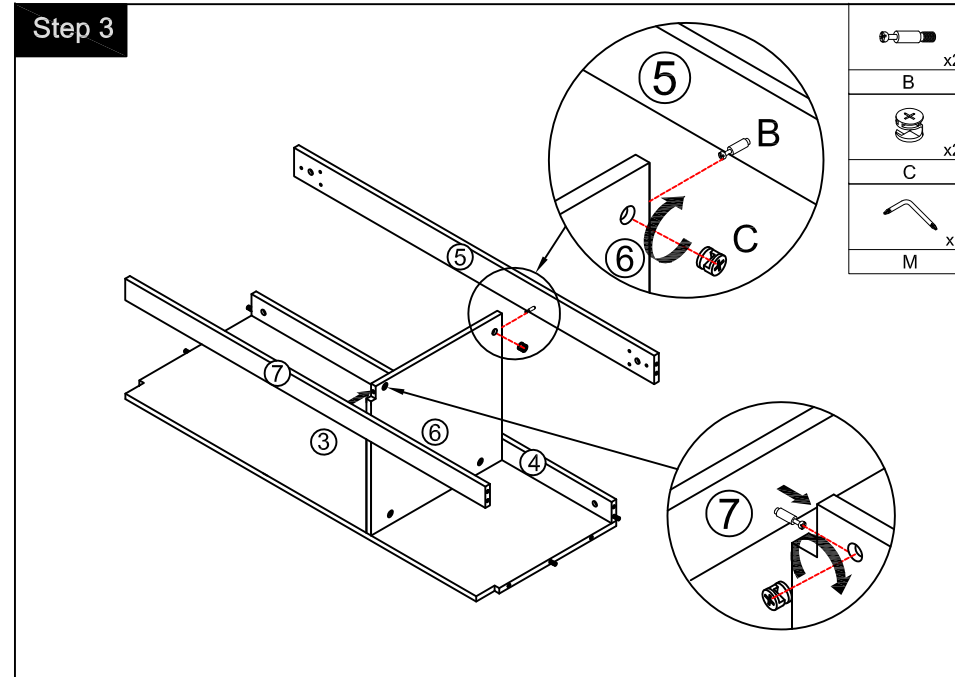
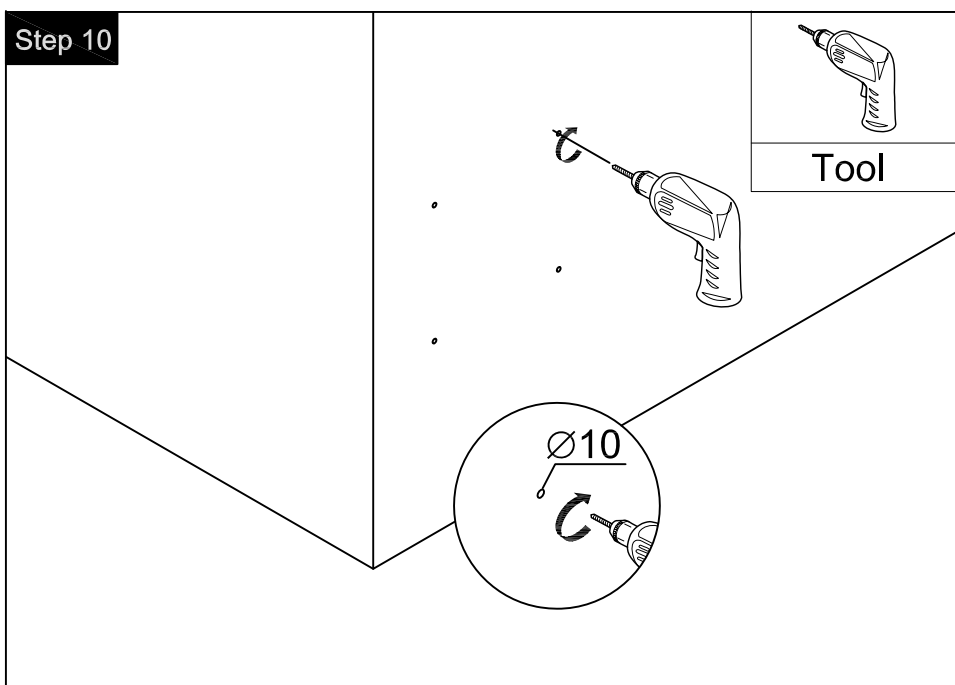
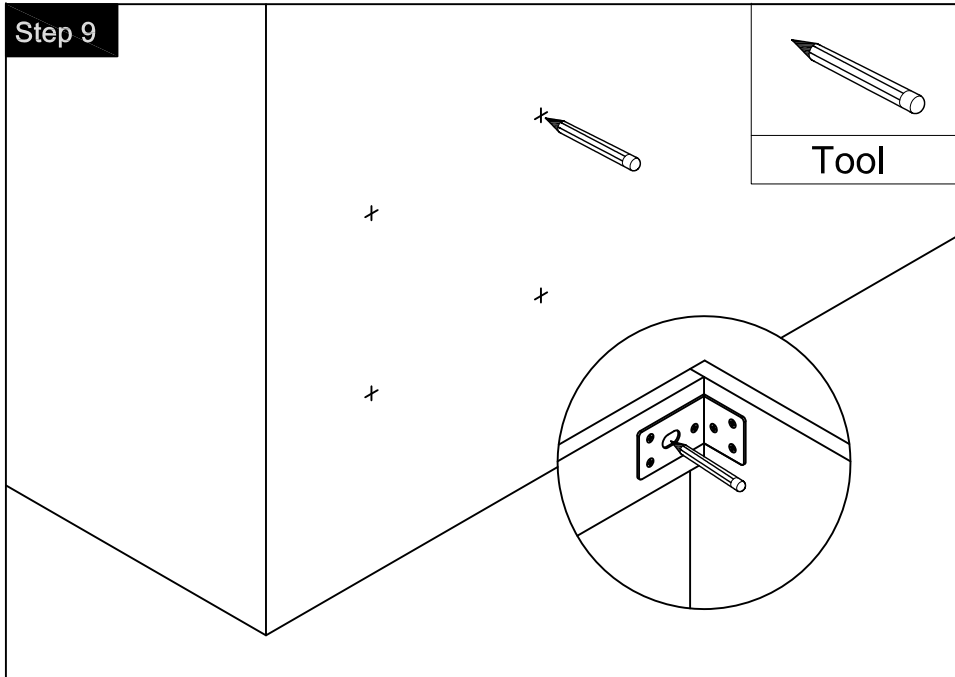
	x4
	
	
Tool	



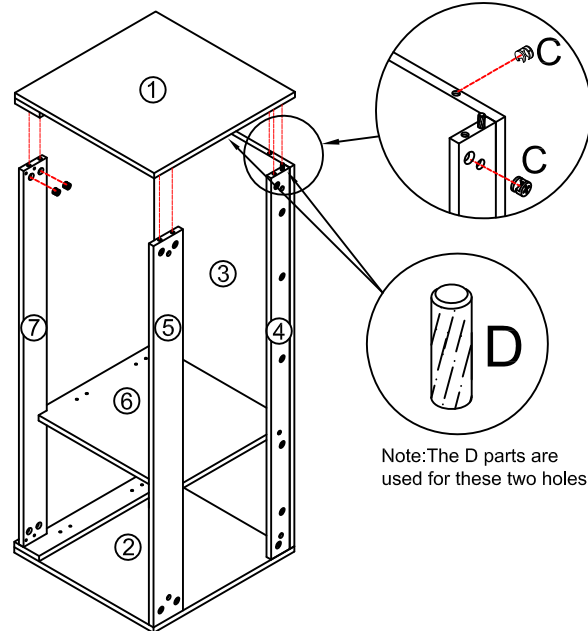
Step 12

	x4
	
Tool	





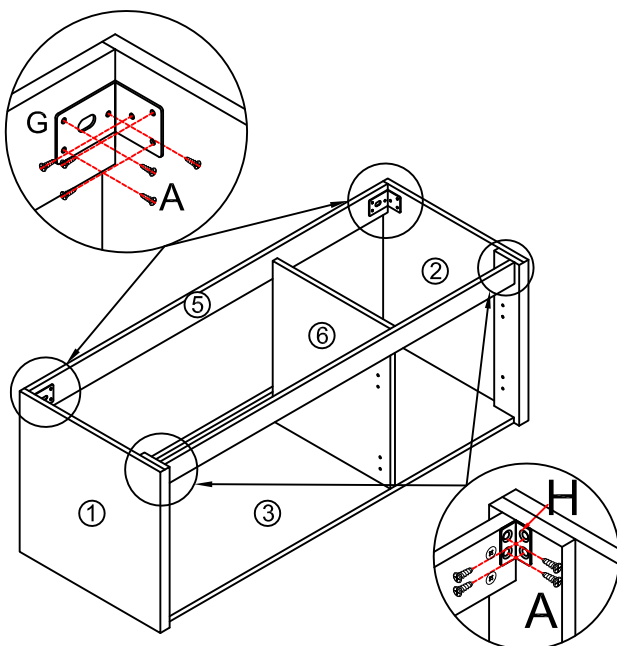
Step 5



	x7
	x7
	x2
	x1

Note: The D parts are used for these two holes

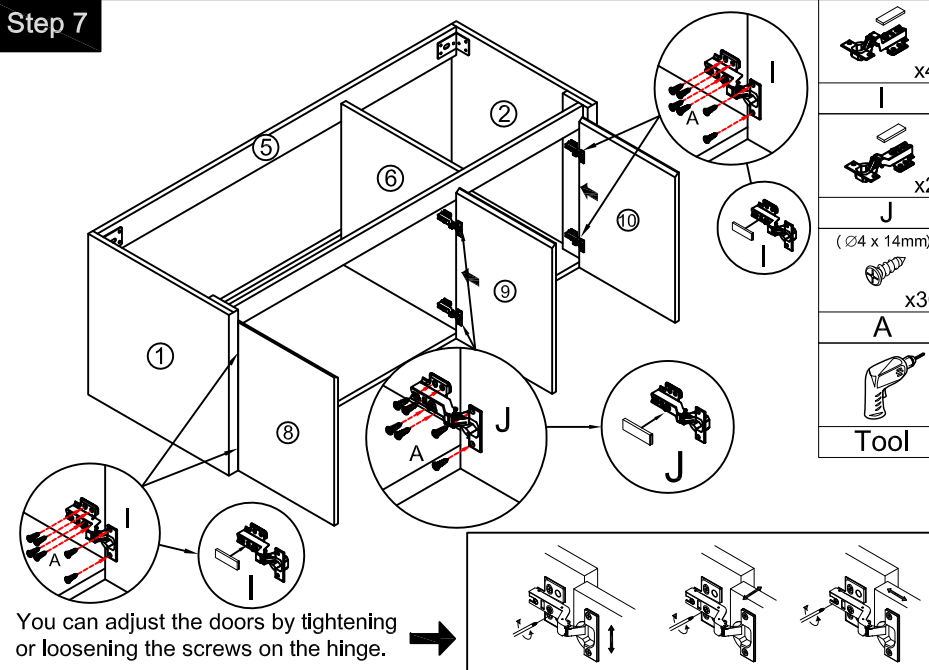
Step 6



	x2
	x2
	x20
	x2
	x1

Tool

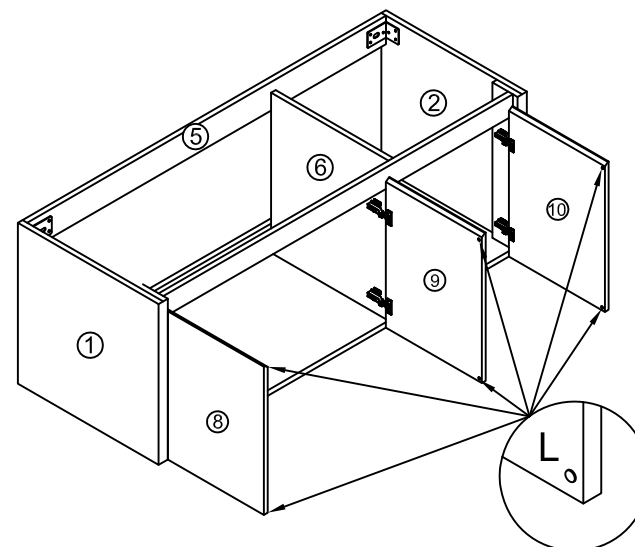
Step 7



	x4
	x2
	x36
	x2
	x1

Tool

Step 8



	x6
--	----