

Shark®

www.SharkVacThenSteam.com

VAC-THEN-STEAM®

MV2010 N

OWNER'S GUIDE



IMPORTANT SAFETY INSTRUCTIONS

For Household Use Only

WHEN USING YOUR SHARK® VAC-THEN-STEAM®, BASIC SAFETY PRECAUTIONS SHOULD ALWAYS BE FOLLOWED, INCLUDING THE FOLLOWING:

WARNING: TO REDUCE THE RISK OF FIRE, ELECTRIC SHOCK OR INJURY READ ALL INSTRUCTIONS BEFORE USING YOUR VAC-THEN-STEAM®.

DANGER OF SCALDING.

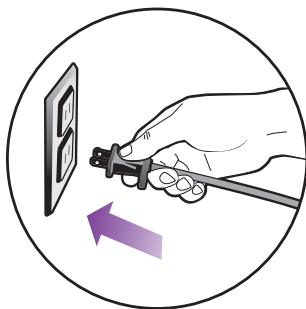
Please use caution when using the steam function. The steam emitted from the appliance is very hot.

1. Use the system only for its intended use.
2. **DO NOT** use outdoors. Use only on dry, indoor surfaces.
3. **DO NOT** leave the appliance unattended when plugged in. Always unplug the power cord from the electrical outlet when not in use and before servicing.
4. **DO NOT** allow the appliance to be used by children. Close attention is necessary when used by or near children, pets or plants.
5. **DO NOT** operate the appliance with a damaged plug or cord, or if the unit has been dropped, damaged, left outdoors or dropped into water. To avoid the risk of electric shock, do not disassemble or attempt to repair the appliance on your own. Return the appliance to EURO-PRO Operating LLC (see warranty) for examination and repair. Incorrect re-assembly or repair can cause a risk of electrical shock or injury to persons when the appliance is used.
6. Use only as described in this manual.
7. Use only manufacturer's recommended accessories and replacement pads.
8. To protect against a risk of electric shock, **DO NOT** immerse the appliance into water or any other liquids.
9. **DO NOT** handle plug or appliance with wet hands or operate appliance without shoes.
10. **DO NOT** pull or carry by power cord, use power cord as a handle, close a door on the power cord, or pull the power cord around sharp edges or corners. Do not run appliance over cord. Keep power cord away from heated surfaces.
11. **DO NOT** unplug by pulling on power cord. To unplug, grasp the plug not the power cord. Do not use extension cords or outlets with inadequate current carrying capacity.
12. **DO NOT** put any objects into the unit openings. Do not use the unit if any opening is blocked; keep free of dust, lint, hair and anything that may reduce airflow.
13. **DO NOT** put hands or feet under the **Vac-Then-Steam®**. Unit gets very hot and may burn.
14. Use **ONLY** on flat, horizontal surfaces. Do not use on walls, counters or windows.
15. **DO NOT** use on leather, wax polished furniture and floors, synthetic fabrics, velvet or other delicate, steam sensitive materials.
16. **DO NOT** add cleaning solutions, scented perfumes, oils or any other chemicals to the water used in this appliance as this may damage the unit or make it unsafe for use and void the warranty. If you live in a hard water area, we recommend using distilled water in your **Vac-Then-Steam®**.
17. When in use, **NEVER** turn the appliance over or on its side. **NEVER DIRECT STEAM TOWARDS PEOPLE, ANIMALS OR PLANTS.**
18. **NEVER LEAVE THE CLEANING UNIT IN ONE SPOT ON ANY SURFACE FOR ANY PERIOD OF TIME WHEN MICRO-FIBER PAD IS ATTACHED.**



TOLL FREE: 1-800-798-7398

19. Carefully remove the micro-fiber pad immediately after you have unplugged and allowed the appliance to cool.
 20. When cleaning the appliance, unplug the power cord from the electrical outlet and clean with a dry or damp cloth. Do not pour water or use alcohol, benzene or paint thinner on the unit.
 21. Extreme caution should be exercised when using this appliance to clean stairs.
 22. Never use Steam function without micro-fiber pad attached.
 23. Keep your work area well lit.
 24. Store appliance indoors in a cool, dry place.
 25. To avoid circuit overload, do not operate another appliance on the same socket (circuit) as the cleaning unit.
 26. If an extension cord is absolutely necessary, an extension cord rated a minimum of 15 ampere, 14 gage cord should be used. Cords rated for less amperage may overheat. Care should be taken to arrange cord so that it cannot be pulled or tripped over.
 27. **DO NOT** store unit with damp/wet micro-fiber cleaning pad attached.
 28. **DO NOT** use the vacuum cleaner without dust cup and filter in place.
 29. **DO NOT** vacuum up any liquids.
 30. **DO NOT** pick up anything that is burning or smoking such as cigarettes, matches or hot ashes.
 31. To reduce the risk of fire **DO NOT** use to pick up flammable or combustible liquids such as gasoline or use vacuum in areas where flammable or combustible fumes may be present.
 32. **DO NOT** pick up toxic solutions such as chlorine bleach, ammonia or drain cleaner with the cleaning unit.
 33. **DO NOT** use in an enclosed space where vapors are present from paint, paint thinner, mothproofing substances, flammable dust or other explosive or toxic materials.
 34. **DO NOT** run the cleaning unit over large-sized objects.
 35. **DO NOT** pick up hard or sharp objects such as glass, nails, screws or coins that could damage the cleaning unit.
 36. **DO NOT** place appliance on unstable surfaces such as chairs or tables.
 37. **DO NOT** allow the cleaning unit to be used as a toy.
 38. Close attention is necessary when used near children.
 39. Keep hair, loose clothing, fingers and all parts of the body away from openings and moving parts.
 40. Turn off all controls before plugging or unplugging your **Vac-Then-Steam®**.
- ⚠ WARNING:** Your appliance is designed to clean non-carpeted, sealed hard floor surfaces that will withstand high heat. Do not use on unsealed wood or unglazed ceramic floors, on surfaces that have been treated with wax or on some no wax floors. The sheen may be removed by the heat and steam action. It is always recommended to test an isolated area of the surface to be cleaned before proceeding. We also recommend that you check the use and care instructions provided by the floor manufacturer.
- ⚠ POLARIZED PLUG**
TO REDUCE THE RISK OF ELECTRIC SHOCK, this appliance has a polarized plug (one blade is wider than the other). As a safety feature, this plug will fit into a polarized outlet only one way. If the plug does not fit fully into the outlet, reverse the plug. If it still does not fit, contact a qualified electrician. **DO NOT ATTEMPT TO DEFEAT THIS SAFETY FEATURE.**



SAVE THESE INSTRUCTIONS

Steam Technology

Thank you for purchasing the **Shark® Vac-Then-Steam®**, the complete bare floor cleaning system.

The unique steam technology, turns simple tap water into super-heated steam that infuse the micro-fiber pads for chemical free cleaning. Only this method creates and delivers 212°F steam that is effective enough to clean and sanitize all your hard floor surfaces. The **Shark® Vac-Then-Steam®** can help you achieve a truly clean and healthy environment for you and your family.

THIS BOOK COVERS MODEL NUMBER:

MV2010 N 11

TECHNICAL SPECIFICATIONS

Voltage: 120V., 60Hz.

Power: 1550 Watts

Water

Capacity: 300 ml (10 oz.)



TOLL FREE: 1-800-798-7398

Contents

Getting Started: Assembly	2
Getting Started: Mode Controls	4
Vacuum Mode.....	5
Steam Mode	8
Maintaining Your Vac-Then-Steam®	12
Troubleshooting Guide	14
Warranty and Registration	15

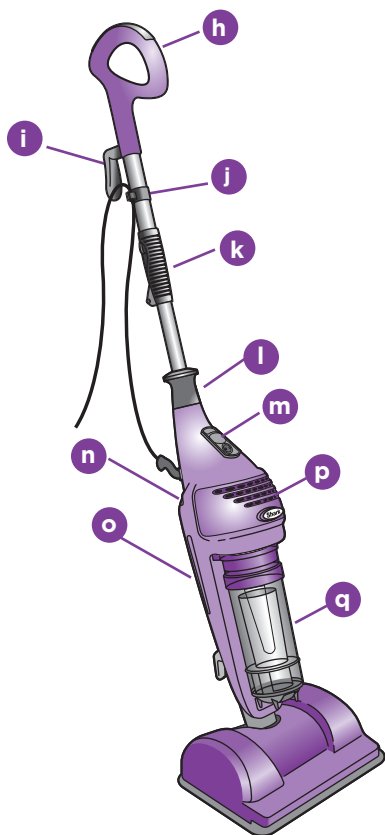
Visit [SharkVacThenSteam.com](https://www.SharkVacThenSteam.com) for more helpful hints and support.

Getting Started: Assembly

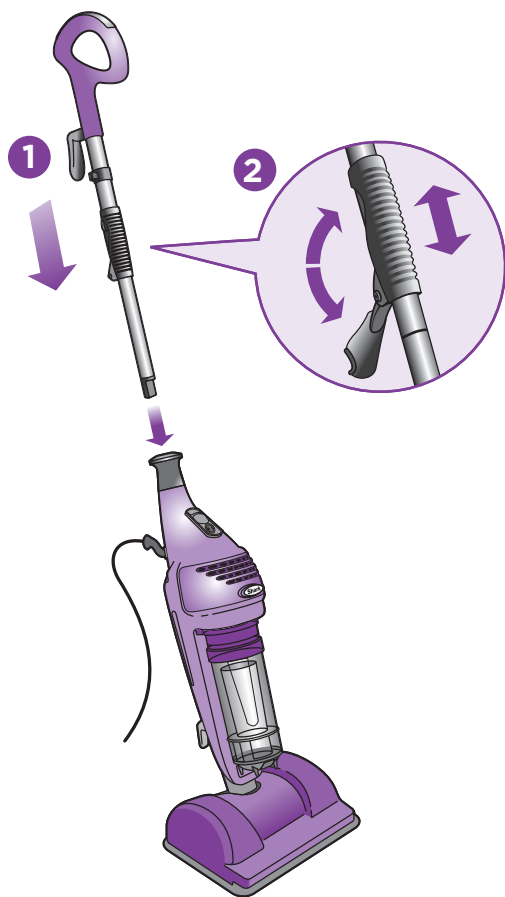
When assembling your **Vac-Then-Steam®** there may be a little water in or around the water tank. This is because we quality test all our Shark products before distributing them, so you get a quality **Shark® Vac-Then-Steam®**.



- a** Telescopic Handle
- b** Cleaning Unit with Dust Cup
- c** 2 All-Purpose Pads
- d** Steam Frame
- e** Filling Flask
- f** 1 Replacement Post-Motor Filter
- g** 1 Replacement Dust Cup Filters Set



- h** Mop Handle
- i** Quick Release Swivel Cord Wrap
- j** Cord Clip
- k** Telescopic Handle Latch
- l** Carry Grip
- m** Vacuum and Steam Mode Panel
- n** Water Tank Cap
- o** Water Tank Viewing Window
- p** Post-Motor Filter Access
- q** Dust Cup



ASSEMBLY

- 1 Slide the Telescopic Handle into the cleaning unit until it locks into place. Once in position, you never have to remove the handle.
- 2 For your comfort, you can adjust the height of the handle. To do so pull the latch down on the handle tube 90 degrees to the open position. Holding the handle, extend the tube to the height that is right for you and then close latch to lock into position.



- 3 Wrap cord around cord holders and secure plug to cord.

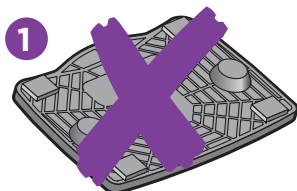
NOTE: The **Vac-Then-Steam®**, is a complete bare-floor cleaning and sanitizing system. It comes “vacuum-ready” out of the box.

QUICK TIP: For easier pushing and pulling, extend the height of the handle by using the telescopic latch on the pole.

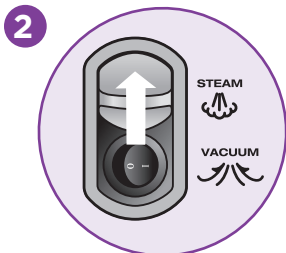
Getting Started: Vacuum and Steam Panel

The **Vac-Then-Steam®** has two operating modes:

VACUUM MODE:



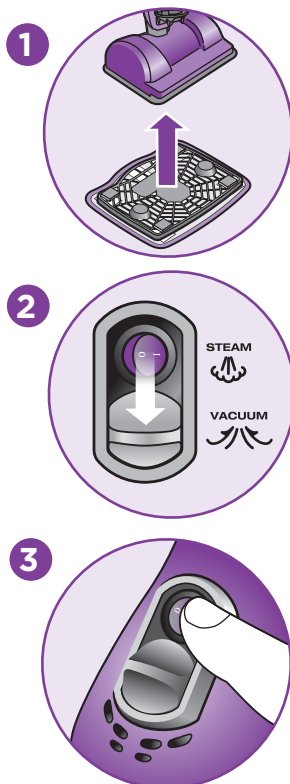
DO NOT USE STEAM PAD AND FRAME IN VACUUM MODE



OPERATING IN VACUUM MODE:

- 1 Remove steam pad and frame, if attached. See page 8 for instructions. Vacuum will not activate if steam frame is attached.
- 2 **SLIDE THE TOGGLE SWITCH UP** to expose the vacuum power button.
- 3 Press the **VACUUM POWER BUTTON** to the **ON "I"** position to activate the vacuum.

STEAM MODE:



OPERATING IN STEAM MODE:

- 1 Attach steam pad and frame. Steam mode will not work if the pad and frame are NOT attached. See page 8 for assembly instructions.
 - 2 Fill the water tank.
- SLIDE THE TOGGLE SWITCH DOWN** to expose the Steam Power button
- 3 Press the **STEAM POWER BUTTON** to the **ON "I"** position. The button will be illuminated red when steam mode is activated.
 - 4 Wait 30 seconds to heat water, then **TILT HANDLE BACK TO ACTIVATE STEAM PUMP.**

After inserting the telescopic handle, your cleaning system is vacuum-ready. Begin vacuuming your hard-surface floors by tilting the cleaning unit back and pressing the vacuum power button.



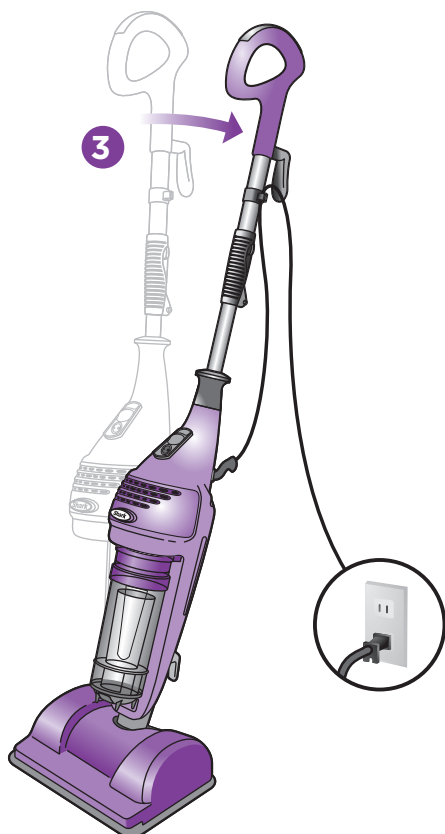
USING VACUUM MODE

- 1 Pull and twist the quick release cord holder to unwrap the power cord completely. Plug in the unit.

- 2 To vacuum, slide the toggle switch until the vacuum power button is exposed. Press the vacuum power mode button to the **ON "I"** position.

! IMPORTANT: You cannot use the vacuum function if the frame and pad are attached to the base of the cleaning unit.

! NOTE: Only vacuum sealed and non-carpeted bare floor surfaces. Refer to floor manufacturer guidelines and warnings.

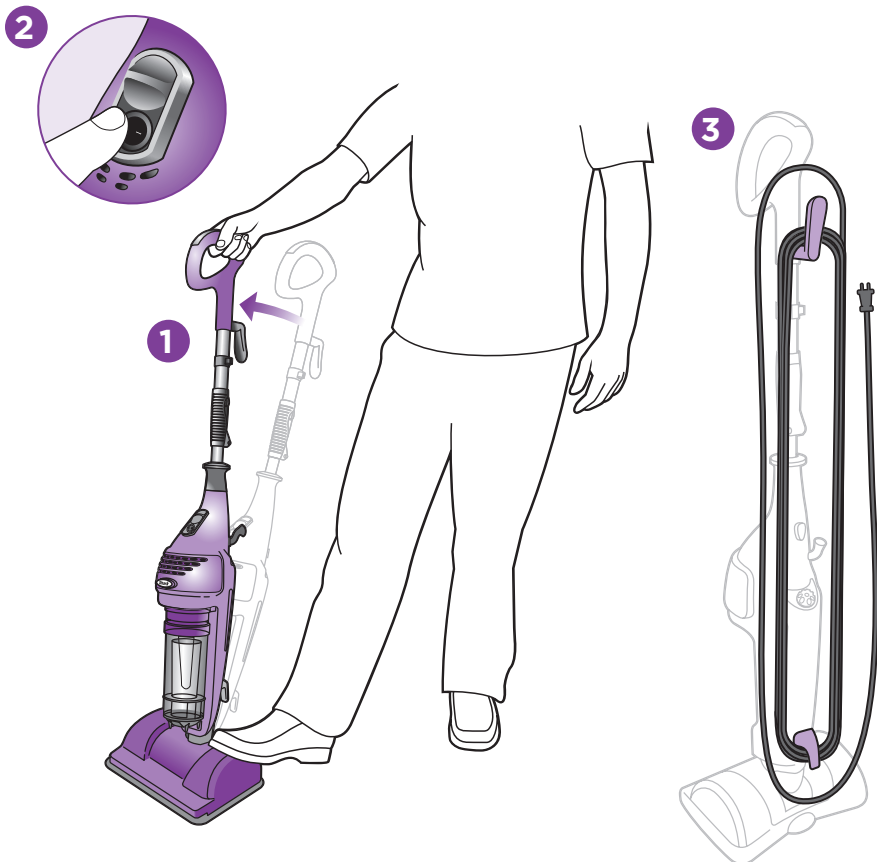


- 3 Place your foot lightly on the top of the cleaning unit base. Tilt the cleaning unit back. Vacuum your floors.

! IMPORTANT: Vacuum all surfaces first before steam-cleaning to avoid condensation build-up. Avoid vacuuming after steam mopping.

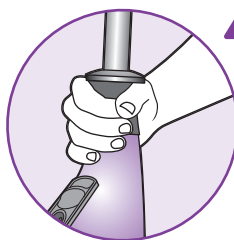
! NOTE: If you vacuum and then steam-clean one room, before moving on to the next, wait 10 minutes for the condensation to clear before vacuuming again.

Vacuum Mode



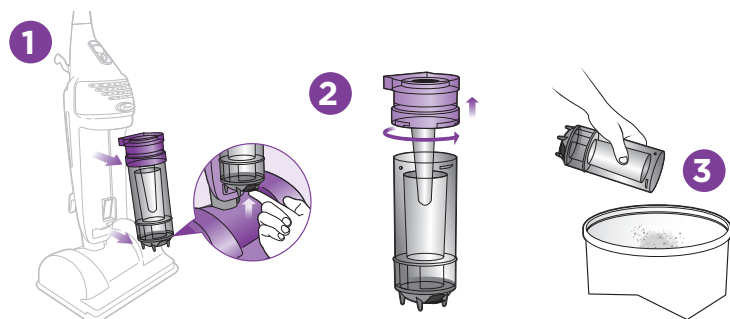
STORAGE

- 1 Place your foot lightly on the top of the base. Tilt cleaning unit into the upright position.
- 2 Turn **OFF** “O” the vacuum power button and unplug the unit.
- 3 Wrap cord around cord holders and secure plug. Store cleaning unit in an upright position.

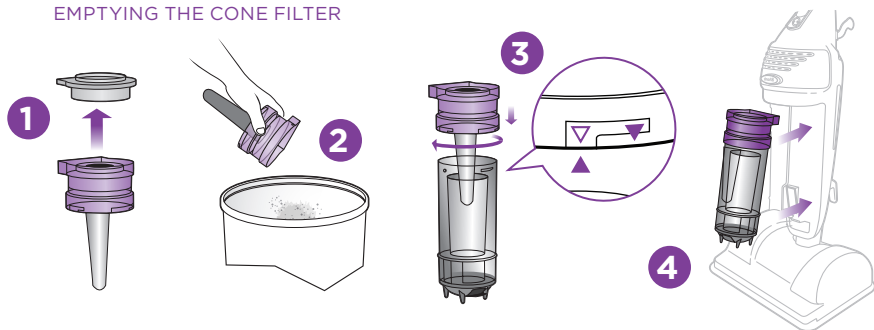


! IMPORTANT:
Always carry the **Vac-Then-Steam®** by the cleaning unit collar; rather than by the handle.

EMPTYING THE DUST CUP



EMPTYING THE CONE FILTER



EMPTYING THE DUST CUP

- 1 Press the dust cup latch at the bottom of the canister upward. Pull the dust cup assembly out and down.
- 2 Twist dust cup cover counter-clockwise to open.
- 3 Tap canister gently over trash receptacle to empty.

EMPTYING THE CONE FILTER

Over time the debris may gather in the cone filter of your **Vac-Then-Steam®**. Clean the filter often for optimal suction performance.

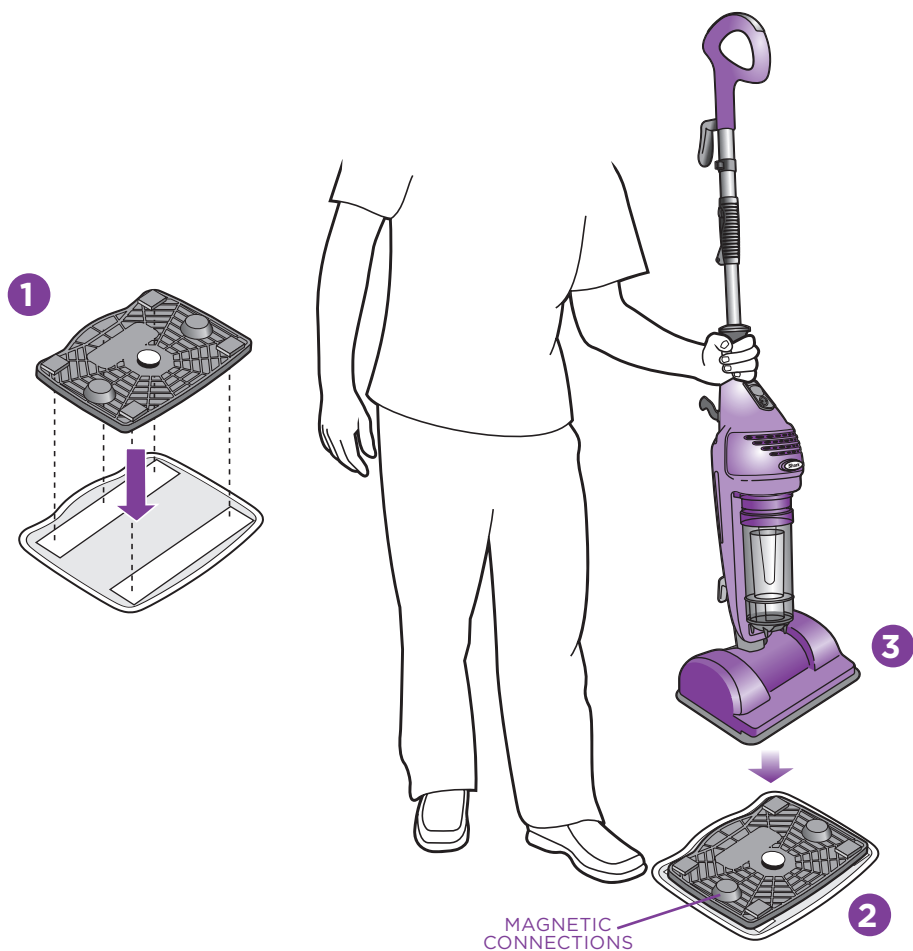
- 1 Lift the filter frame out from the top of the dust cup and remove the two filter layers from the filter frame.

- 2 Tap filter canister gently over trash receptacle to empty debris from the conical filter.

Reattach the filter frame.

- 3 To reattach the dust cup cover, align the indicators that are printed on the rear of the dust cup and cover. Turn the cover clockwise and make sure the solid arrows are aligned before reinserting the dust cup into the vacuum.
- 4 To replace the dust cup in to the unit, gently push the dust cup assembly up and in. The dust cup will click into place.

Steam Mode



ASSEMBLY

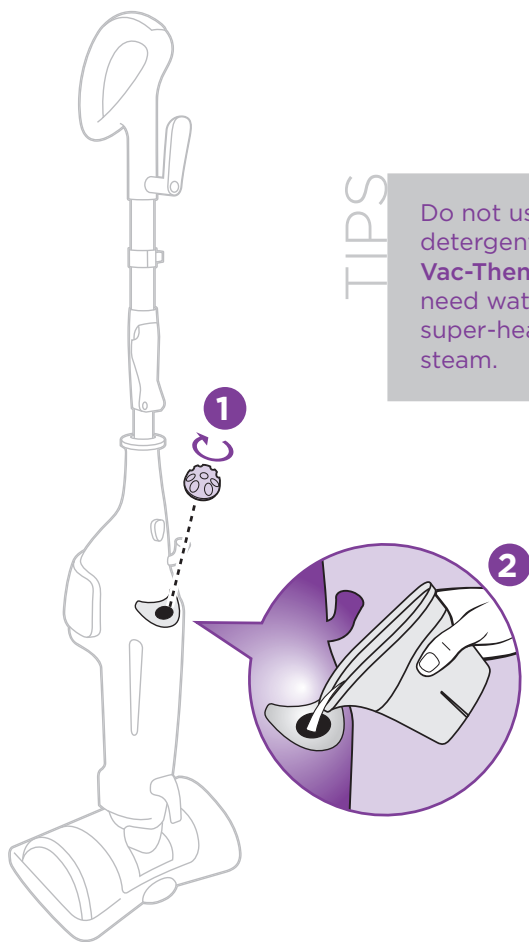
- 1 Attach a steam pad onto the bottom of the steam frame, matching the hook and loop fasteners.
- 2 Place the steam frame/pad assembly on the floor with the magnetic connections facing up.

- 3 Place the cleaning unit onto the Steam Frame. **THE UNIT MUST BE UPRIGHT.**

! IMPORTANT: Steam frame and pad must be attached to the cleaning unit in order to use the steam function.

TIPS

Do not use chemicals or detergents in your **Vac-Then-Steam®**. You only need water to achieve super-heated, sanitizing steam.



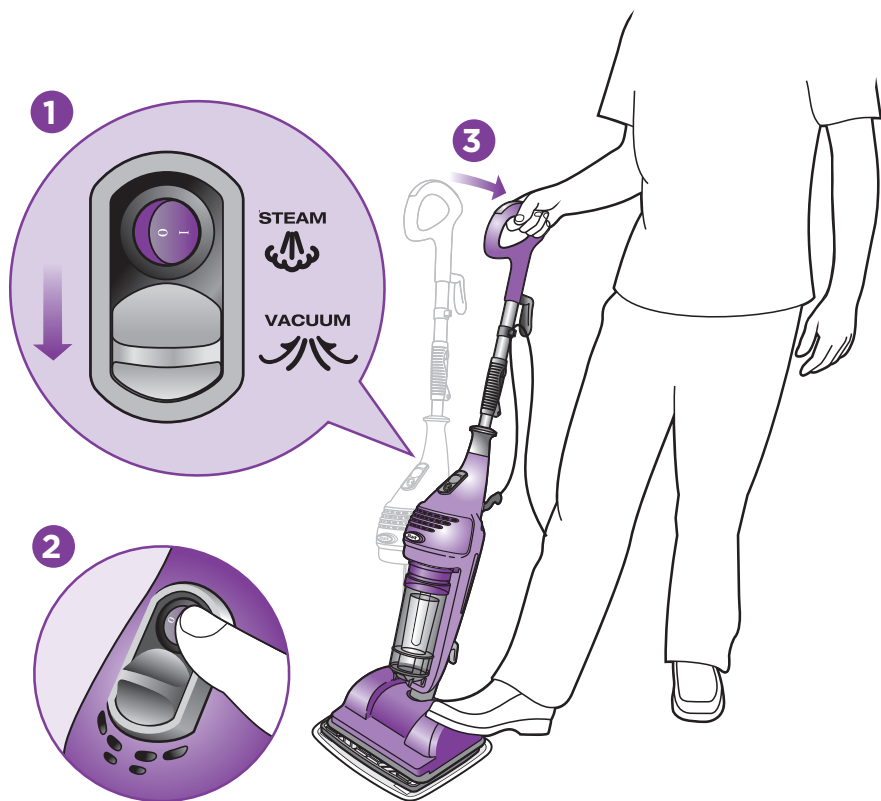
FILLING THE WATER TANK

- 1 Keep the cleaning unit in the upright position to add water. Turn the water tank cap counter-clockwise and remove from the tank.
- 2 Use the filling flask and pour water into the tank. Do not overfill. Replace the cap on the water tank by turning cap clockwise and tightening.

NOTE: If you live in a hard water area, we recommend using distilled water in your **Vac-Then-Steam®**.

DECALCIFYING YOUR STEAM MOP: Calcium and mineral deposits can build up and impact the performance of your steam mop over time. To extend the life of your product we recommend that you use distilled water or Shark's® Water Filtration Bottle. Visit **www.SharkVacThenSteam.com** to order.

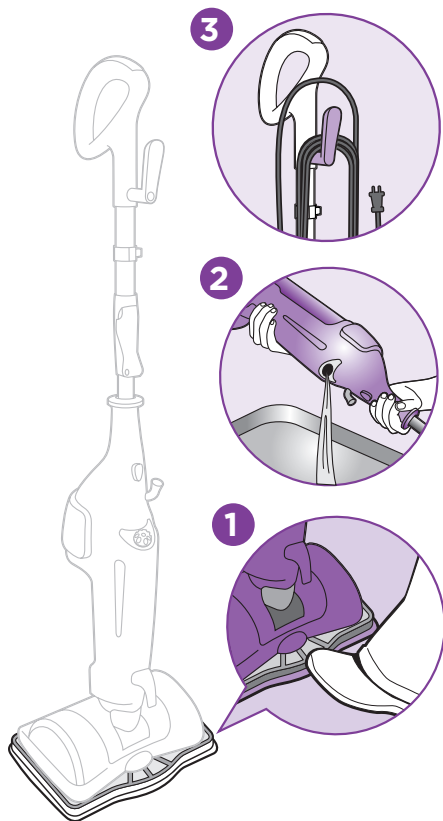
Steam Mode



STEAM CLEANING

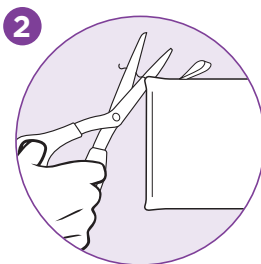
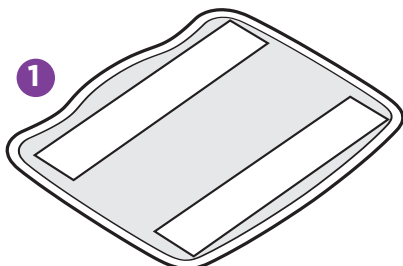
- 1 Plug in the cleaning unit. Slide the toggle switch to expose the steam power button.
- 2 Press the steam power button to the **ON "I"** position. The illuminated red light indicates that the "boiler" is on. Wait 30 seconds for the water to heat up and for steam to be ready.
- 3 Place your foot lightly on the top of the base. **TILT HANDLE BACK TO ACTIVATE STEAM PUMP.**
- 4 Push handle upright to stop steam.

NOTE: Check water level and fill anytime throughout the cleaning process to maintain optimal steam.



STORAGE

- 1 Unplug and turn the unit **OFF "O"**. Press your foot on the steam frame. Separate steam pad from steam frame.
- 2 Remove the water tank cap and empty water tank.
- 3 Wrap cord securely around cord management hooks.
- ⚠ **CAUTION:** Use caution when handling the steam frame. Magnetic connections on the frame retain heat.



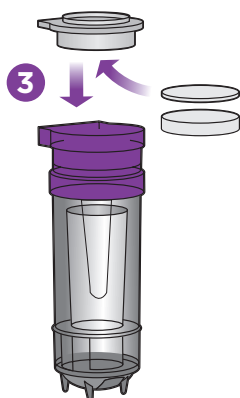
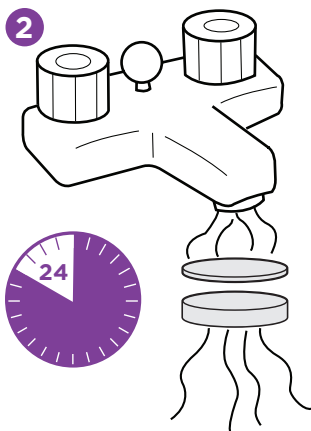
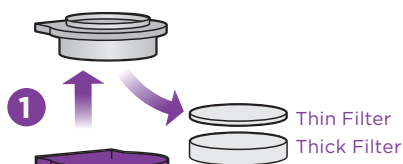
CARE OF YOUR MICRO-FIBER CLEANING PAD

- 1 Wash pads in warm water. Wash separately from other laundry. Only use liquid detergent (no powder detergent). Do not use fabric softeners. Line dry or dry on a low dryer setting.
- 2 If there are loose threads on the pad carefully cut the threads with scissors. Do not pull on them or cut at the base.

Maintaining Your Vac-Then-Steam®

TIPS

Replacement filter sets have been provided with your product. Use one of the replacement filter sets when another set is drying.



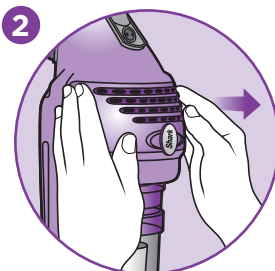
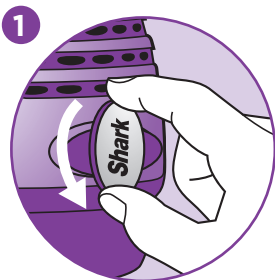
CARE OF YOUR DUST CUP FILTERS

- 1 Unplug and turn **OFF "O"** the vacuum. Pull out the dust cup. See page 7 for instructions.
Lift the filter frame out from the top of the dust cup. Remove the two filter layers from the filter frame.
- 2 Thoroughly rinse the two filters in lukewarm water. Squeeze out any excess water. Air dry for 24 hours before reusing.

- 3 Insert a dry filter set into the filter frame. The order of the filters impacts your dust cup performance. Make sure the thick filter is on the bottom and the thin filter is on top.

Put the frame with the filter set back into the top of the dust cup.

- RECOMMENDED MAINTENANCE SCHEDULE:** Using only water, thoroughly rinse filters every 3 months and dry for 24 hours. Replace filter set in the **Vac-Then-Steam®** once a year. More regular filter care or replacement may be required with excessive use.

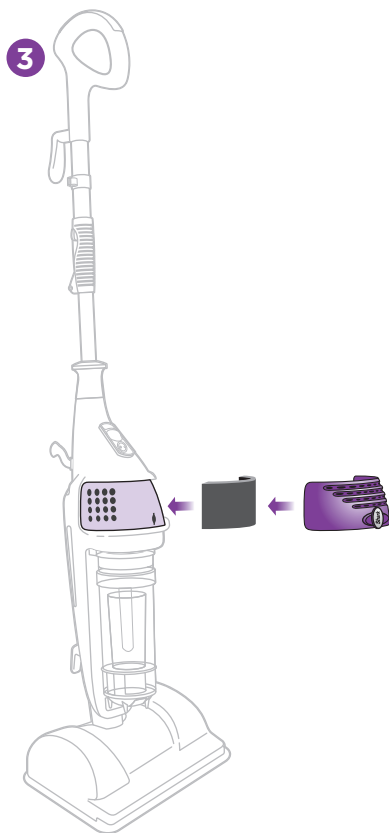


POST-MOTOR FILTER

- 1 Twist the **Shark®** logo knob on the post-motor cover counter-clockwise to release cover.
- 2 Use both hands to grip cover on both sides and pull cover toward you.

Gently peel the filter off the inside of the cover. Thoroughly rinse the filter in lukewarm water. Squeeze out any excess water. Air dry for 24 hours before reusing.

- 3 Insert a dry filter into the inside of the cover. Snap cover onto the **Vac-Then-Steam®**.
Twist the **Shark®** logo knob clockwise to secure cover.



NOTE: Using only water, thoroughly rinse filter every 3 months and dry for 24 hours. Replace filter in the **Vac-Then-Steam®** once a year. More regular filter care or replacement may be required with excessive use.

DO NOT use a hair dryer or any other forced hot air to dry any of the filters.

NOTE: Any other servicing should be performed by an authorized service representative

ORDERING REPLACEMENT PARTS

Go to **www.SharkVacThenSteam.com** to find replacement filters, accessories, and micro-fiber pads.

Troubleshooting Guide

PROBLEM	POSSIBLE REASONS & SOLUTIONS
The Vac-Then-Steam® will not turn on.	<p>Your Vac-Then-Steam® should be securely plugged into a 120V AC electrical outlet only.</p> <p>Check your fuse or breaker.</p> <p>Switch Steam or Vacuum Power button to the ON "I" position.</p>
The Vac-Then-Steam® will not make steam.	<p>Make sure the water tank is filled to the indicated fill line.</p> <p>Attach Steam Pad and Frame to base of the unit.</p> <p>Switch Steam Power button to the ON "I" position.</p> <p>TILT MOP HANDLE BACK TO GENERATE STEAM.</p>
The Vac-Then-Steam® leaves water on the floor.	<p>Check to see if your micro-fiber cleaning pad has absorbed too much moisture. We recommend you unplug the Vac-Then-Steam® and replace the micro-fiber cleaning pad.</p> <p>Make sure the steam pad is attached correctly.</p> <p>Wait 30 seconds after switching Steam Power button ON "I" before mopping, allowing water to heat to a 212° sanitizing steam. If the unit is not allowed to heat properly, some water may be emitted.</p>
The Vac-Then-Steam® is hard to push.	<p>Make sure the steam pad is attached correctly.</p> <p>Check to see if the cleaning pad is excessively dirty.</p> <p>Replace if the pad is too dirty or wet.</p> <p>Try increasing the height of the pole for better leverage by raising the height of the telescopic pole.</p>
The Vac-Then-Steam® is not picking up dirt.	<p>Check filters to see if they need cleaning. Follow instructions for rinsing and drying the filters before re-inserting back into the unit. (See "Maintenance" sections for instructions.)</p> <p>Dust cup may be full. Empty the dust cup.</p> <p>Check nozzle at the cleaning base for blockages.</p> <p>Clear blockages if required.</p>

Visit SharkVacThenSteam.com for more helpful hints and support.

ONE (1) YEAR LIMITED WARRANTY

EURO-PRO Operating LLC warrants this product to be free from defects in material and workmanship for a period of one (1) year from the date of the original purchase, when utilized for normal household use, subject to the following conditions, exclusions and exceptions.

If your appliance fails to operate properly while in use under normal household conditions within the warranty period, return the complete appliance and accessories, freight prepaid. For Customer Service support, call 1 (800) 798-7398 or visit our website SharkVacThenSteam.com.

If the appliance is found to be defective in material or workmanship, **EURO-PRO Operating LLC** will repair or replace it free of charge. Proof of purchase date and a check made payable to **EURO-PRO Operating LLC** in the amount of \$19.95 to cover the cost of return shipping and handling must be included.*

The liability of **EURO-PRO Operating LLC** is limited solely to the cost of the repair or replacement of the unit at our option. This warranty does not cover normal wear of parts and does not apply to any unit that has been tampered with or used for commercial purposes. This limited warranty does not cover damage caused by misuse, abuse, negligent handling or damage due to faulty packaging or mishandling in transit. This warranty does not cover damage or defects caused by or resulting from damages from shipping or repairs, service or alterations to the product or any of its parts, which have been performed by a repair person not authorized by **EURO-PRO Operating LLC**.

This warranty is extended to the original purchaser of the unit and excludes all other legal and/or conventional warranties. The responsibility of **EURO-PRO Operating LLC** warranty if any, is limited to the specific obligations expressly assumed by it under the terms of the limited warranty. **In no event is EURO-PRO Operating LLC** liable for incidental or consequential damages of any nature whatsoever. Some states/provinces do not permit the exclusion or limitation of incidental or consequential damages, so the above may not apply to you.

This warranty gives you specific legal rights, and you may also have other rights which vary from state to state or province to province.

***Important: Carefully pack item to avoid damage in shipping. Be sure to include proof of purchase date and to attach tag to item before packing with your name, complete address and phone number with a note giving purchase information, model number and what you believe is the problem with the item. We recommend you insure the package (as damage in shipping is not covered by your warranty). Mark the outside of your package "ATTENTION CUSTOMER SERVICE". We are constantly striving to improve our products, therefore the specifications contained herein are subject to change without notice.**

OWNERSHIP REGISTRATION CARD FOR CANADIAN CONSUMERS ONLY

Please complete and return within ten (10) days of purchase. The registration will enable us to contact you in the event a product defect is discovered. By returning this card you acknowledge to have read and understood the instructions for use, and warnings set forth in the accompanying instructions.

RETURN TO: **EURO-PRO Operating LLC**, 4400 Bois Franc, St. Laurent, Quebec H4S 1A7

PURCHASER:

ADDRESS:

DATE OF PURCHASE: MODEL: **MV2010N**

NAME AND ADDRESS OF STORE:

Euro-Pro Operating LLC

US: Newton, MA 02459

CAN: Ville St-Laurent, QC H4S 1A7

1-800-798-7398

www.SharkVacThenSteam.com

Copyright © 2010 Euro-Pro Operating LLC

Printed in China

Illustrations may differ from actual product.

MV2010N.110503