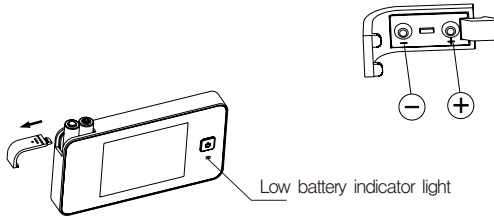




Installation and replacement of the batteries

1. Slide the cover left to open.
2. Install the batteries in accordance with the +/- sign.
3. Reverse this process to close the cover.



Low battery indicator light

Digital Door Viewer User Manual

Model # TSJY-8028

Operation:

1. Power Button: Press and release the power button to view image. Unit will automatically shutoff after aprox. 10 seconds.
2. Low Battery Indicator: When illuminated, replace batteries with 2x AAA batteries.

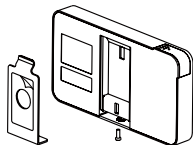


Specification:

Fits any door:	38–110mm (1.50"–4.33") thick
Fits any barrel hole:	14–22mm
Sensor:	0.3 Mega Pixel CMOS
LCD screen:	2.8" TFT
Power source:	2 AAA Batteries
Size:	125(W)x68(H)x15(D)mm
Weight:	160g

Attention :

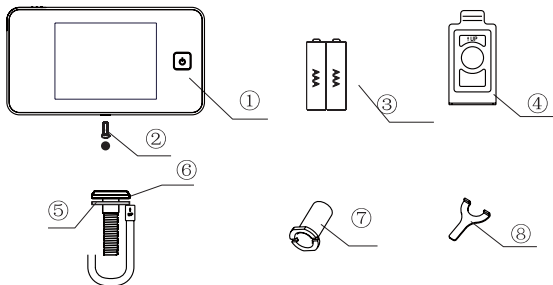
1. Please read the instruction manual before use.
2. DO NOT disassemble the camera or the main body.
3. Handle with care.
4. Remove Set Screw from bottom of unit.
5. Remove Mounting Bracket for Door Viewer and prepare to install.



Battery:

Dispose of used batteries appropriately, DO NOT bury or burn the batteries and keep them away from children. DO NOT swallow. DO NOT re-charge or disassemble the batteries.

Package Contents:



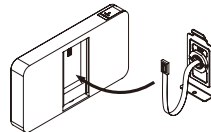
- | | |
|-----------------------|-------------------|
| ① Digital door viewer | ② Set screw 1 pc |
| ③ 2AAA batteries | ④ Mounting plate |
| ⑤ Washer | ⑥ Camera |
| ⑦ Locking barrel | ⑧ Tightening tool |

Before installation:

Prior to mounting the peephole viewer, please make sure you have installed the batteries included and read these installation instructions.

Installation:

1. Remove existing Peephole Viewer from door. If no peephole viewer exist, drill a 14mm hole in the door at eye level.
2. Carefully feed Ribbon Connector/Camera assembly (6) thru the hole in the door from the Exterior Ribbon connector first. (Please Be Extremely careful not to damage the ribbon connector). Make sure the washer (5) is between the camera lens and the door. Make sure that the arrow mark on front of the camera is pointing upwards. (FIG. 1)
3. Remove 3M film protector from the backside of the mounting plate (4).
4. From the Interior side of the door, carefully pass the ribbon connector thru the hole in the middle of the mounting plate (4) while sliding the hole in the mounting plate over the threads of the camera (6), (FIG.1). Please note the (UP) notation on the mounting plate, and the brackets for the mounting plate are facing away from the door.
5. NOTE: Make sure the mounting bracket is aligned vertically with the door and press firmly against the door.
6. Carefully Pass the ribbon connector thru the locking barrel (7) and tighten locking barrel with tightening tool (8) (FIG. 2). NEVER turn the camera/ribbon connector as this will damage the unit.
7. Fully Plug the Ribbon connector into the back of the door viewer. Please Note the "UP" notation on the end of the Ribbon Connector. Gently fold excess wire into the cavity on the back of the door Viewer.



8. Carefully hook the top digital door viewer over the bracket at the top of the mounting plate, while gently sliding the door viewer unit flush against the door, and secure the digital door viewer case with the Set Screw.(FIG. 3)
9. Remove the plastic covers from the camera and the screen.

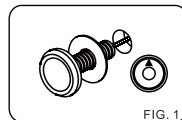


FIG. 1

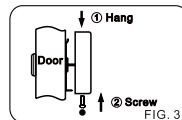


FIG. 3

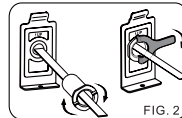


FIG. 2

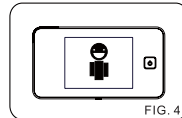


FIG. 4