



Shower Door Kit

INSTALLATION INSTRUCTIONS



Read all instructions prior to installing product.

Refer to manufacturers safety instructions when operating any tools.

To register your product, please visit:

freedomproduct.com

⚠ WARNING:

- Improper installation of this product can result in personal injury. Always wear safety goggles when cutting, drilling and assembling the product.
- Incorrect installation may cause harm to the product or individual.

NOTICE:

- DO NOT attempt to assemble the kit if parts are missing or damaged.
- DO NOT return the product to the store. For assistance or replacement parts call: 1-800-336-2383.

BEFORE YOU BEGIN:

Check your local zoning laws.

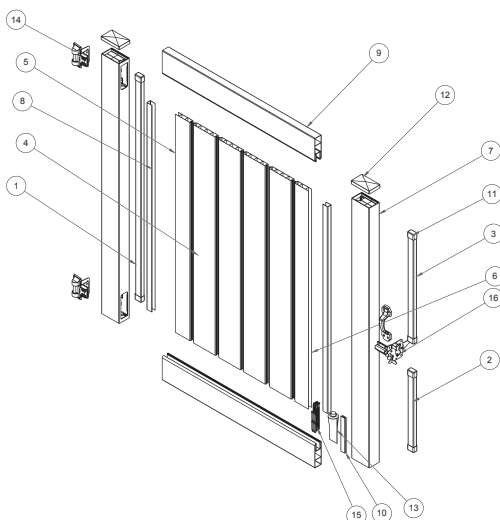
- Local zoning laws and Home Owners Associations may regulate the location, style and height of your product or even require a permit signoff beforehand.
- Check local codes for frost line depth and regulations.
- You must have the utility companies clearly mark your property for electrical, gas or water lines to avoid puncturing any unseen underground utilities.

TOOLS/MATERIALS NEEDED:

Drill
#2 Square Drive Bit
3/32" Drill Bit
Phillips Screwdriver
Rubber Mallet
10" Wood Blocks
Tape Measure
Line Level and Plumb Bob
Safety Glasses
Pencil

Component list:

Item #	Description	Qty.
1	7/8" x 1-1/2" x 51-1/2" Privacy Strip	1
2	7/8" x 1-1/2" x 18-1/4" Privacy Strip	1
3	7/8" x 1-1/2" x 25" Privacy Strip	1
4	7/8" x 6" x 50" Tongue & Groove Board	4
5	7/8" x 4" x 50" Tongue End Board	1
6	7/8" x 4" x 50" Groove End Board	1
7	2-3/4" x 4-3/4" x 59-1/2" Door Upright	2
8	1" x 1-3/8" x 47-3/8" U-Channel	2
9	1-3/4" x 5-1/2" x 40-3/8" Top/Bottom Rail	2
10	Installation Instructions	1
11	7/8" x 1-1/2" Privacy Strip End Cap	6
12	2-3/4" x 4-3/4" x 1" Door Upright Post Cap	2
13	4oz. Glue	1
14	Standard Wrap Hinge Kit - Black	1
15	Outdoor Shower Door Screw Pack	1
16	Heavy Duty Gate Latch - Black	1
17	Gate Handle - Black	1

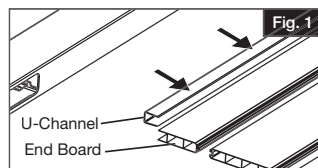


1

Preparation

a. Lay door components on a smooth, flat and clean surface. Begin by arranging the rails in the correct orientations.

b. Slide U-Channels onto end boards (Fig. 1).

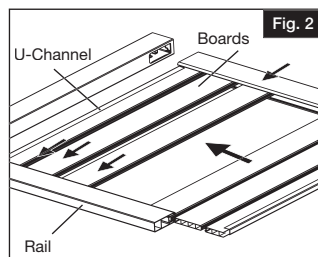


2

Inserting boards into rails

a. Slide the boards into the bottom rail, starting and ending with end boards while locking each of them together (Fig. 2).

b. Slide the top rail over the boards (Fig. 2).

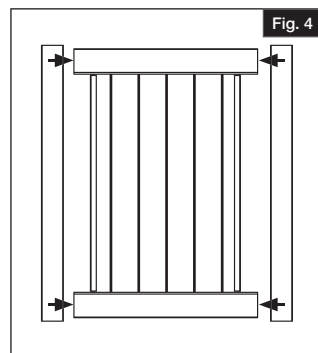
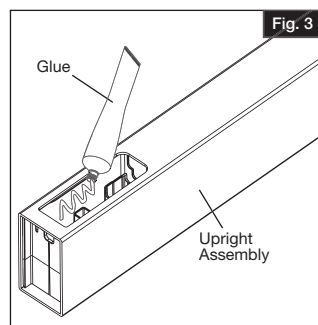


3

Gluing rails to upright

a. Apply provided glue to all inside surfaces of the uprights where the rails will be installed (Fig. 3).

b. Attach uprights to rails (Fig. 4).



4

Square the door

Ensure the door is square. Measure diagonally from top of left corner rail (A) to bottom of right corner rail (B) and note the length. Then, measure diagonally from top of right corner rail (C) to bottom of left corner rail (D). Note the length. Make sure both measurements are the same before installing screws into uprights (Fig. 5)

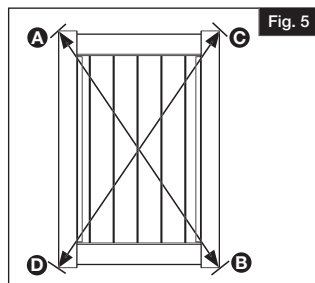


Fig. 5

5

Securing the uprights

Install two 6" screws (provided) through each upright insert and into the rail using the molded grooves on the insert as a guide (Fig. 6).

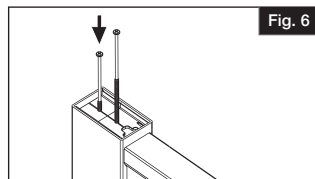


Fig. 6

6

Attaching upright caps

Install upright caps onto the top of each upright with remaining vinyl cement (Fig. 7).

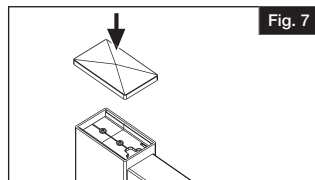


Fig. 7

7

Attaching gate hardware

Install Boerboel® hinges, handle and latch according to hardware instructions.

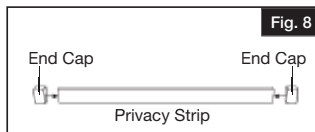


Fig. 8

8

Install privacy strips

- Place privacy strip end caps onto ends of privacy strips (Fig. 8).
- Place privacy strips on inside of posts so that they are flush with the door when the door is closed. (Fig. 9). Secure privacy strips to posts using supplied screws.

NOTE:

Privacy strips cover gaps between door and posts but also act as door stops.

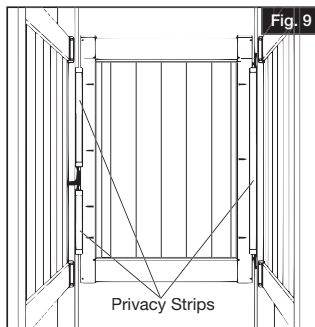


Fig. 9

4

BARRETTE OUTDOOR LIVING

7830 FREEWAY CIRCLE
MIDDLEBURG HEIGHTS, OHIO 44130

TEL: (888) 418-4400
WWW.FREEDOMPRODUCT.COM

