

INSTALLATION INSTRUCTIONS

Before Using the Wine Refrigerator

Remove the exterior and interior packing

Check to be sure you have all of the following parts

- 6*Sapless Wooden Shelves
- 3*Chrome Wire Shelves
- 1*Aluminum Alloy Handle
- 1*Instruction Manual
- 1*L-Shaped Screwdriver

Before connecting the Beverage Refrigerator to the power source, let it stand upright For approximately 24-36 hours. It will reduce the possibility of a malfunction in The cooling system from handling during transportation.

Clean the interior surface with lukewarm water using a soft cloth.

Install the handle on the left side of the Door.

Installation of the Wine Cooler

This appliance is designed to be for free standing installation or built-in (fully recessed). Place your product on a floor that is strong enough to support it when it is fully loaded. To level the product, adjust the front leveling legs at the bottom of the unit

Please locate the product away from direct sunlight and sources of heat (stove, heater, radiator, etc.). Due to direct sunlight may affect the acrylic coating and heat sources may increase electrical consumption. Extreme cold ambient temperatures may also cause the unit not to perform properly. Don't install it in a location where the temperature will fall below 60°F (16°C). Avoid locating the unit in a moist area.

For best performance, it is recommended that you install the appliance in a location with an ambient temperature between 72°F-78°F. If the ambient temperature is above or below recommended temperatures, the performance of the unit may be affected.

Built-in Cabinet Instructions

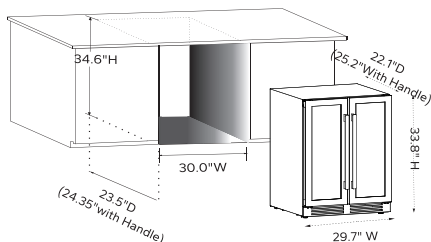
For built-in installation, leave a ¼" (6 mm) space on each side and at the top of the wine cellar to ensure proper air circulation to cool the compressor and condenser. Also, be sure to not obstruct the front exhaust vent with any objects as this may affect the unit from performing properly.

Cabinet Opening Dimensions

Minimum Width: 30.0" (76.1 cm)

Minimum Depth: 23.6" (59.9 cm)

Minimum Height: 34.6" (87.9 cm)



Electrical Connection

★ WARNING

Improper use of the grounded plug can result in the risk of electrical shock. If the power cord is damaged, have it replaced by an authorized service center.

This appliance should be properly grounded for your safety. The power cord of this appliance is equipped with a three-prong plug which mates with standard three prong wall outlets to minimize the possibility of electrical shock.

★ NOTE

Plug the unit into an exclusive, properly installed, grounded wall outlet. Do not, under any circumstances, cut or remove the third (ground) prong from the power cord. For personal safety, this appliance must be properly grounded. And any questions concerning power and/or grounding should be directed toward a certified electrician or an authorized service center.

The appliance should always be plugged into its own individual electrical outlet, which has a voltage rating that matches the label on the appliance. This provides the best performance and also prevents overloading house wiring circuits that could cause a fire hazard if overheated. Never unplug the appliance by pulling the power cord. Always grip the plug firmly and pull it straight out of the receptacle. Repair or replace immediately all power cords that have become frayed or otherwise damaged. Do not use a cord that shows cracks or abrasion damage along its length or at either end. When moving the appliance, be careful not to damage the power cord.

This appliance requires a standard 115/120 volt AC/~60 Hz electrical ground outlet with three prongs. Have the wall outlet and circuit checked by a qualified electrician to make sure the outlet is properly grounded. When a standard 2-prong wall outlet is encountered, it is your responsibility and obligation to have it replaced with a properly grounded 3-prong wall outlet. The cord should be secured behind the appliance and not left exposed or dangling to prevent accidental injury.

Power bar with Surge Protection (Recommended)

Most electrical appliances use a series of electric control boards to operate. These boards are very susceptible to power surges and could be damaged or destroyed.

If the appliance is going to be used in an area or if your city / country is prone to power surges / outages; it is suggested that you use a power surge protector for all electrical devices / appliances you use. The surge protector that you select must have a surge block high enough to protect the appliance it is connected to.

If you have any questions regarding the type and size of surge protector, you need to contact a licensed electrician in your area.

INSTALLATION INSTRUCTIONS

Extension Cord

Because of potential safety hazards under certain conditions, it is strongly recommended that you do not use an extension cord with this appliance. However, if you must use an extension cord it is absolutely necessary that it be a UL/CUL-Listed, 3-wire grounding type appliance extension cord having a grounding type plug and outlet and that the electrical rating of the cord be 115 volts and at least 10 amperes.

Installing the Handle

This wine cellar includes a Aluminum Alloy Handle. To install the handle please follow the below instructions:

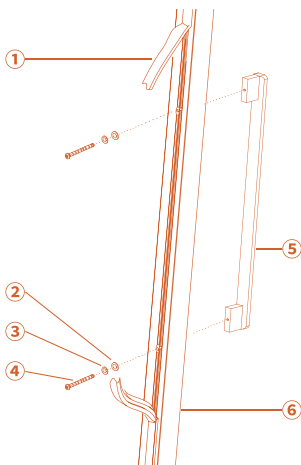
Step 1: Remove the door gasket where the handle should be installed on the left side of the door, as shown below. You won't need tool since the gasket can be removed by hand. You can start with a corner if you can't remove it from the center.

Step 2: Use the two handle screws, lock washer and flat washer included in the bag containing the instruction manual and insert them into the side of the door from

Step 3: Align the holes in the handle with the screws, tighten the screws using the screwdriver until the base of the handle is at the level of the door and that the handle is tight but not too tight to damage the assembly.

Step 4: Replace the gasket the door in place.

Note: The Handle Screws ④ are packed with other accessories in the instruction manual bag please insert them into the door before installing the handle.



- ① Gasket
- ② Flat washer
- ③ Lock washer
- ④ Screw
- ⑤ Handle
- ⑥ Door-frame

Installing Reversing the Door

Please remove the bottom hinge holder ② by unscrewing the two lock screws. Be careful to hold the glass door firmly after removing the screws. **Please check Figure 1**

2. Gently pull down to remove the glassdoor from the right top hinge and place it on a padded surface to avoid the risk of damage
3. Using a flat-head screwdriver, gently pry up the decorative hinge cover plate on the top left of the unit and the round black decorative cover caps on the upper leftside corner of the inside cabinet frame Use them to cover the screw holes on the right-hand side.

4. Move the top hinge from the right-hand side to and use the upper right hinge that is equipped along with the manual in the cabinet to install on the left side of cabinet by removing the screws ⑦. **Please check Figure 3/4**

5. Relocate the door to the left-hand side of cabinet by placing the door hinge holes into the hinge, then screw the bottom hinge assembly with the lower hinge fixer ④ onto the left designated position and tighten after the door is eveled. **Please check Figure 4**

Figure 1

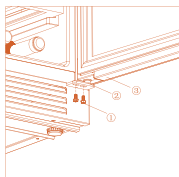


Figure 2

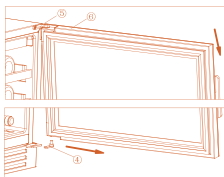


Figure 3

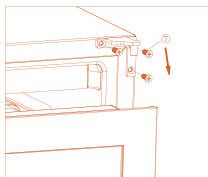


Figure 4

