

## IT'S SIMPLE.

Luxfer LeadCheck™ Swabs are disposable, convenient and simple to use. The entire test typically takes about 30 seconds. Just swab virtually any surface or material, including painted wood, metal, plaster or drywall. If the swab turns red, lead is present: **RED MEANS LEAD™**.

- ✓ EPA recognized\*
- ✓ Instant results using only a no-mess swab
- ✓ Easy, clean and contained
- ✓ Detects lead down to 600 ppm

## IT'S EPA RECOGNIZED.

Since April 22, 2010, the EPA's Renovation, Repair, and Painting (RRP) Rule has mandated that contractors working in pre-1978 homes, schools, and child-occupied facilities must follow lead-safe work practices and use EPA-recognized lead test kits, such as Luxfer LeadCheck™. This regulation is designed to prevent lead poisoning and safeguard families, particularly children, from lead exposure.

## STAY COMPLIANT.

Luxfer LeadCheck™ Swabs are an essential tool for contractors to meet the EPA RRP Rule requirements. Compliance with these regulations is not optional—it is a legal mandate that protects contractors from costly fines and legal consequences. LeadCheck™ Swabs provide fast, accurate, and reliable results, allowing contractors to identify lead hazards and immediately implement lead-safe work practices.

By using EPA-recognized tools like LeadCheck™, contractors demonstrate their professionalism and commitment to safety, ensuring the health and well-being of homeowners, families, and workers. Compliance builds trust, upholds industry standards, and reinforces a contractor's reputation as reliable and responsible.

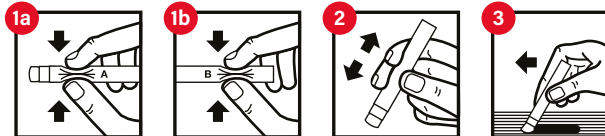
## HOW TO USE LUXFER LEADCHECK™ SWABS:

**Read full instructions found in package before use.**

Each Luxfer LeadCheck™ Swab contains two crushable vials, one with a lead-reactive dye, the other with a pre-measured activator solution. Crush the vials to mix the contents, then bring the tip into contact with the surface to be tested.

### ACTIVATION:

- 1 CRUSH.** Squeeze and crush points marked "A" and "B," located on the barrel of the Swab.
- 2 SHAKE AND SQUEEZE.** With the Swab tip facing down, shake twice and squeeze gently until the yellow liquid comes to the tip of the Swab — it's now activated for testing.
- 3 RUB.** While squeezing gently, rub the Swab on the test area for 30 seconds. If the tip turns red or pink, lead is present.



Each Luxfer LeadCheck™ Swab has no shelf life. EPA recognized when used by a certified renovator to determine that lead-based paint is not present on wood, metal, or drywall and plaster surfaces.

## Dependable Lead-Safe Work Products

**Luxfer Magtech**  
2940 Highland Avenue Suite 210  
Cincinnati, OH 45212-2402  
[www.leadcheck.com](http://www.leadcheck.com)

LeadCheck and Red Means Lead are trademarks of Luxfer Magtech © 2024 Luxfer



Please recycle. Printed in U.S.A. All rights reserved.

**LUXFER**  
**LeadCheck™**  
Swabs

**INSTANT LEAD TEST**  
EASY TO USE. INSTANT RESULTS.

**RED MEANS LEAD™**

**EPA RECOGNIZED**

**INSTANT LEAD TEST**

**PRUEBA DE PLOMO INSTANTÁNEA**

**DETECTS LEAD ON:**

- Painted Wood
- Metal
- Vinyl and Plastic
- Dust

**INSTANT EASY TO USE DISPOSABLE**

**WARNING!**  
MAY CAUSE EYE AND SKIN IRRITATION. Read carefully other cautions on the attached packet.

**¡ADVERTENCIA!**  
PUEDE CAUSAR IRRITACIÓN EN LOS OJOS Y PIEL. Lea cuidadosamente otras precauciones en el packet adjunto.

**8 SWABS**

**Cont. 8 Swab Kit**

**LUXFER**  
**LeadCheck™**  
Swabs

**Instant Lead Testing**

**WARNING!**  
MAY CAUSE EYE AND SKIN IRRITATION. Read carefully other cautions on the attached packet.

**¡ADVERTENCIA!**  
PUEDE CAUSAR IRRITACIÓN EN LOS OJOS Y PIEL. Lea cuidadosamente otras precauciones en el packet adjunto y brújula.

**RED MEANS LEAD™**

**RED MEANS LEAD™**

# LUXFER IS LEADING THE WAY IN HELPING TO PREVENT LEAD POISONING.

Lead poisoning can cause severe health effects, including damage to the liver, kidneys, brain, nerves, bones and blood. Children are especially at high risk. Lead in dust is the most common way people are exposed, especially during renovation or repair work.

For more information, go to [www.epa.gov/lead](http://www.epa.gov/lead) or [www.leadcheck.com](http://www.leadcheck.com)



← Luxfer LeadCheck™ Swabs are available in retailer and contractor packs.

# DETECT LEAD ON MANY SURFACES — INSTANTLY!

Luxfer LeadCheck™ Swabs help certified renovators meet the requirements of the RRP Rule by making lead testing simple.



## LEAD PAINT HAZARDS ON:

### Home exterior

- ✓ wood
- ✓ bricks
- ✓ stucco
- ✓ cement
- ✓ metal
- ✓ window frames
- ✓ shutters
- ✓ doors
- ✓ door frames
- ✓ stair railings

### Home interior

- ✓ walls, especially the bathroom and kitchen
- ✓ plaster, drywall
- ✓ kitchen cupboards
- ✓ floors
- ✓ stairs
- ✓ handrails
- ✓ moldings

## OTHER LEAD HAZARDS:

### Dust

- ✓ under deteriorating paint
- ✓ fabric, carpeting
- ✓ threshold

### Polyvinyl plastics

- ✓ mini blinds
- ✓ electrical cords

### Ceramic tile

- ✓ kitchens
- ✓ bathrooms
- ✓ hearths

### Porcelain enameled fixtures

- ✓ bathtubs
- ✓ sinks
- ✓ toilets

### Brass

- ✓ key rings
- ✓ inner fixtures on faucets
- ✓ inner fixtures on well pumps

### Solder

- ✓ copper pipes leading to tap
- ✓ stained-glass windows

\*When used by a certified renovator to determine that lead-based paint is not present on wood, metal, or drywall and plaster surfaces.

**RED MEANS LEAD™**

[www.leadcheck.com](http://www.leadcheck.com)